

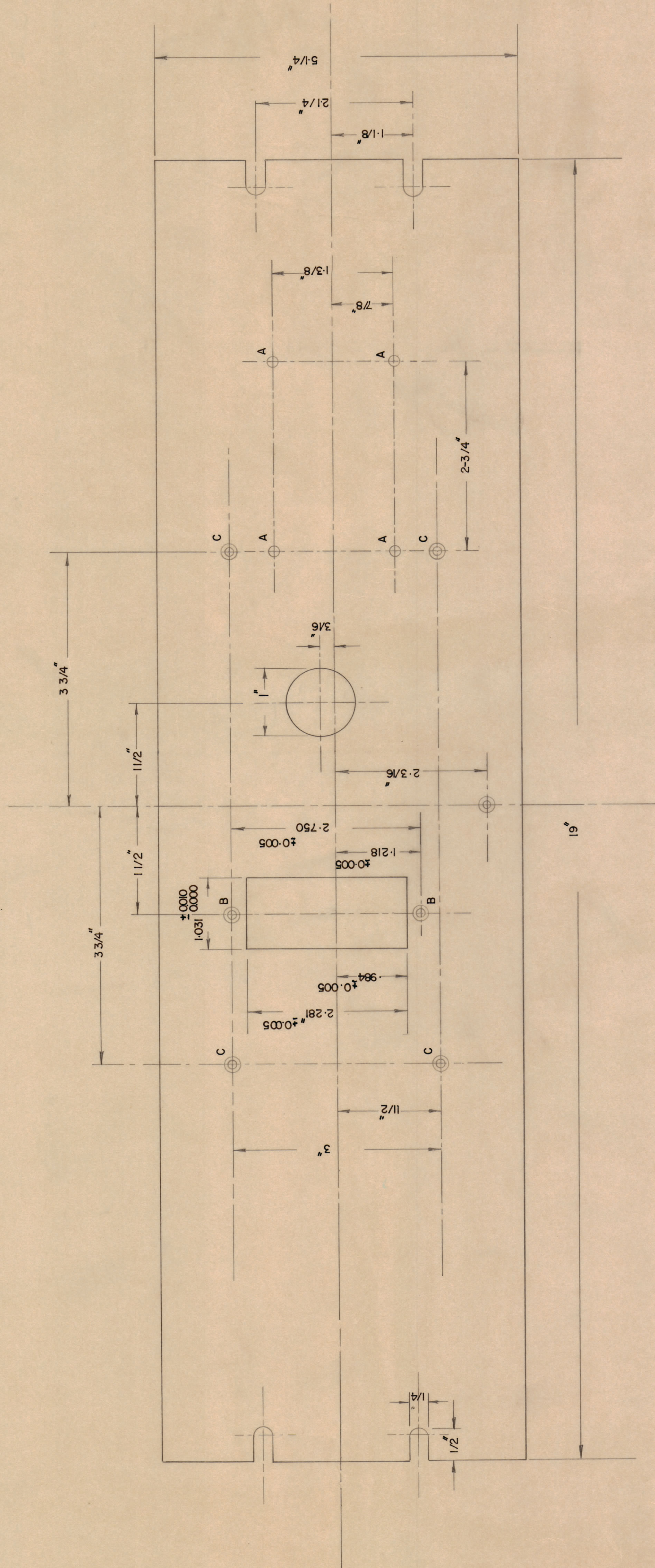
IF IT IS FOUND DESIRABLE TO CHANGE ANY TOLERANCE OR DIMENSION ON THIS DRAWING NOTIFY THE PURCHASER PROMPTLY.
 MAXIMUM ALLOWABLE TOLERANCES HAVE BEEN DETERMINED AND DEVIATIONS WILL BE CAUSE FOR REJECTION. REMOVE ALL BURRS AND SHARP EDGES.

NOTICE TO PERSONS RECEIVING THIS DRAWING

THE TECHNICAL MATERIEL CORPORATION claims proprietary right in the material disclosed herein. This drawing is issued in confidence for engineering information only and may not be reproduced or used to manufacture anything shown herein without permission from THE TECHNICAL MATERIEL CORPORATION to the user. This drawing is loaned for mutual assistance and is subject to recall at any time.

Property of:
 THE TECHNICAL MATERIEL CORPORATION
 MAMARONECK, NEW YORK

MS-243



FRONT VIEW.

- A - 47 (-078) DRILL 4 HOLES
- B - DRILL & C.S.K FOR 6/32 FLAT HD. SCREW 2 HOLES REQ.
- C - DRILL & C.S.K-FOR 8/32 FLAT HD. SCREW 5 HOLES REQ.

SCALE - 1-1

REF. TO DRNG. MS-243 MAMARONECK.

REV.	ITEM	PART NO.	DESCRIPTION	SYMBOL
		3/16" ALUMINUM	TMC (Canada) LIMITED OTTAWA ONTARIO	
		24-5-73	FRONT PANEL	
			MODEL DCP.	
			DRAWN	
			CHECKED	
			ELEC. DES. APP.	
			MECH. DES. APP.	
			FINAL APPROVAL	
			FINISH & SPEC. NO.	MS-243

ISSUE	ITEM	CHANGED FROM	DATE	ON NO.	DRAWN	CHECKER	DES. APP.
TOLERANCES							
DEC. DIM. ±							
FRAC. DIM. ±							
ANGULAR DIM. ±							
OTHERS							
TOLERANCES ARE NOT INCLUDED							
SCALE:							
DRILL, PUNCH, COMMERCIAL STOCK SIZES AND MANUFACTURERS TOLERANCES ARE NOT INCLUDED							
PROJECT NO. P-8768							
MODEL DCP							
DATE 7-7-58							