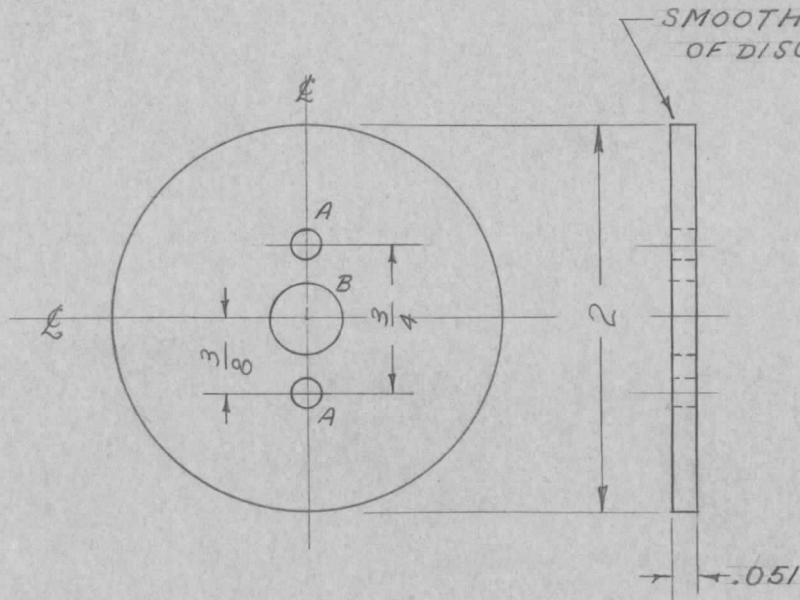


IF IT IS FOUND DESIRABLE TO CHANGE ANY TOLERANCE OR OTHER DETAIL SPECIFIED ON THIS DRAWING NOTIFY THE PURCHASER PROMPTLY.

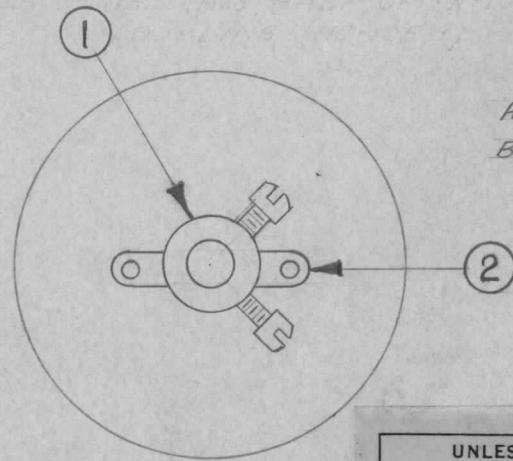
MAXIMUM ALLOWABLE TOLERANCES HAVE BEEN DETERMINED AND DEVIATIONS WILL BE CAUSE FOR REJECTION. REMOVE ALL BURRS AND SHARP EDGES

MS-230 C

REQ. PER UNIT	USED ON			
	MODEL	PROJECT NO.	ASS'Y. NO.	DATE
1	XFK		A-679	4-13-55



MACHINING
MS230-1



ASSEMBLY
MS230-2

UNLESS OTHERWISE SPECIFIED DIMENSIONS ARE IN INCHES AND INCLUDE CHEMICALLY APPLIED OR PLATED FINISHES		
DECIMALS	TOLERANCES	FRACTIONS
.X ± .05		± 1/64
.XX ± .01		ANGLES
.XXX ± .005		± 0° 30'

NOTE:
2" DISC TO BE FORMED WITH SPECIAL PUNCH.

REQ.	ITEM	PART NO.	DESCRIPTION	SYMBOL
2	2	EY100-1	EYELET	
1	1	MC105-1	COUPLING, SHAFT	
.051 THK.			THE TECHNICAL MATERIEL CORP.	
STOCK SIZE			MAMARONECK, NEW YORK	
ALUMINUM			LOCKING DISC	
MATERIAL			XFK	
WEIGHT PER PC.				
525-H32				
TYPE & TEMPER			PB	
HEAT TREAT. SPEC.			DRAWN	
FINISH & SPEC. NO.			ELEC. DES. APP.	
S404 IRIDITE			MECH. DES. APP.	
CHECKED			FINAL APPROVAL	
MS-230			C	

ISSUE	ITEM	CHANGED FROM	DATE	CN. NO.	DRAFTS	CHECKER	ENG. APP.
C	2	MS230-1, -2 ADD. NOTES UPD.	11.10.64	12849	hb	Jan	D
B	1	S404-IRIDITE WAS S101-CAUSTIC DIP	12-7-59	1001	P		EMN
A	1	REDRAWN - B-HOLE WAS 5/16	4-19-58	1	P.B.	Jade	W

TOLERANCES	SCALE
ALL OTHERS DEC. DIM. ± FRAC. DIM. ± ANGULAR DIM. ±	DRILL, PUNCH, COMMERCIAL STOCK SIZES AND MANUFACTURERS TOLERANCES ARE NOT INCLUDED.