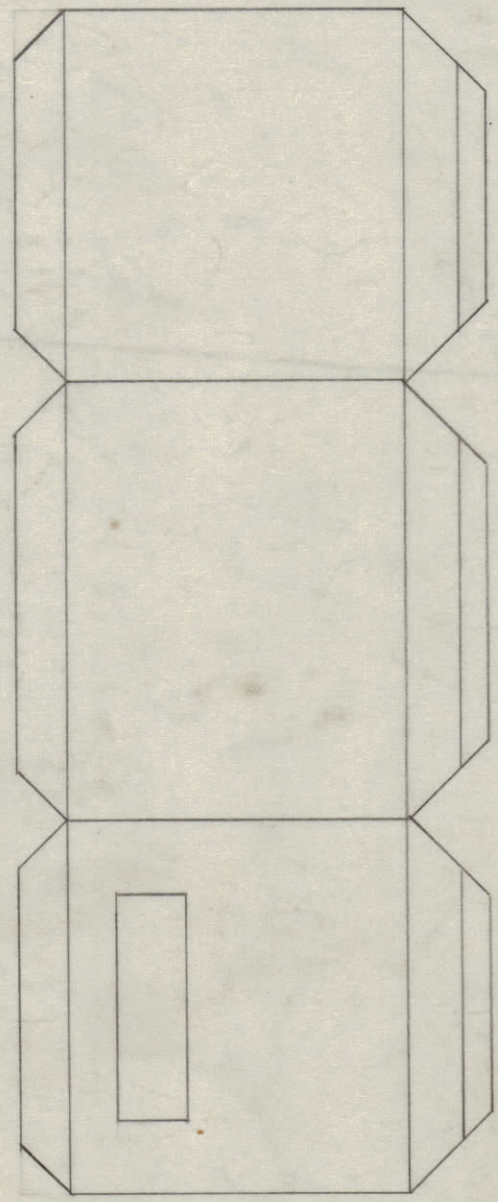
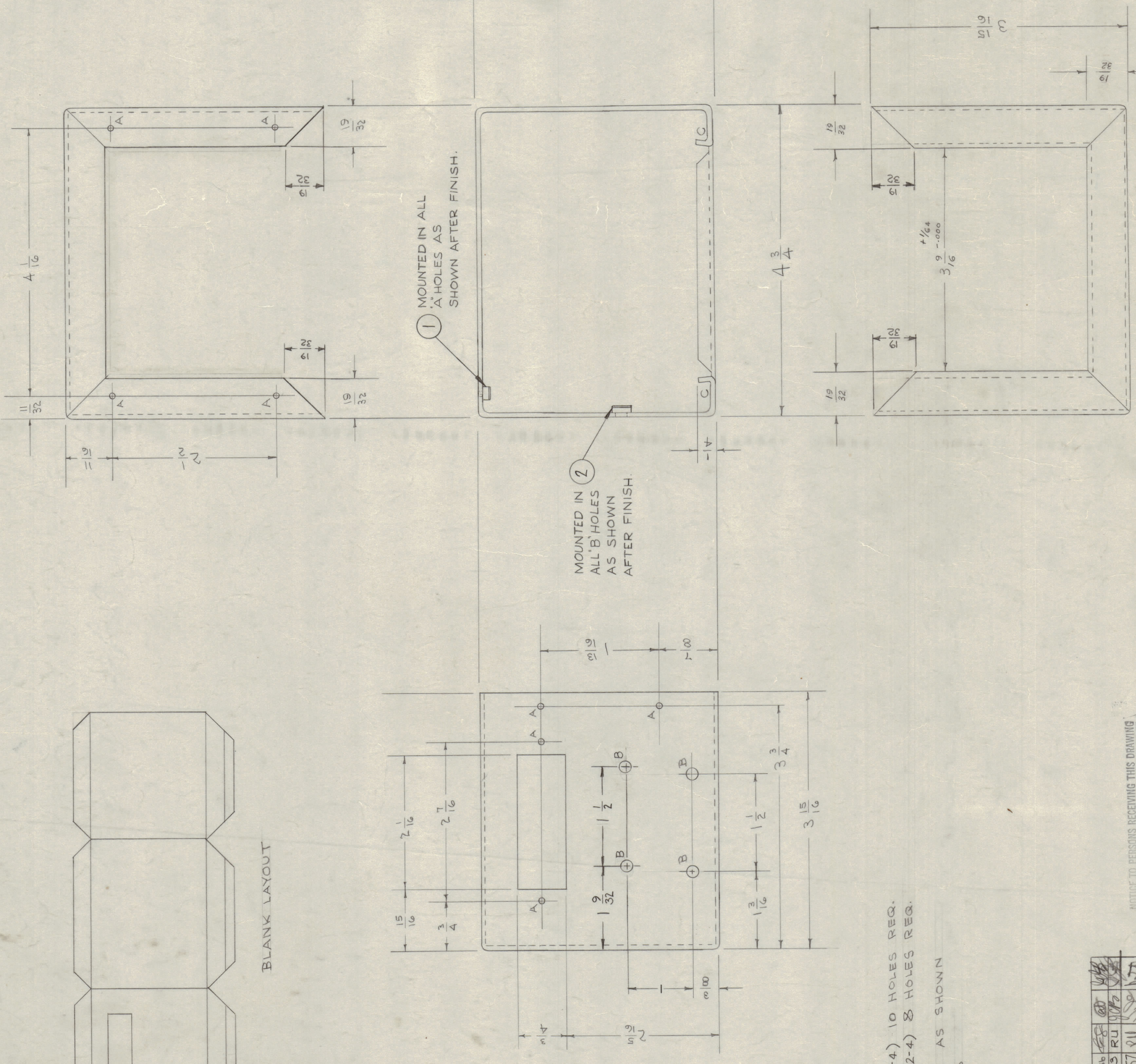


THIS FORM IS INTENDED FOR USE BY THE PURCHASER OF THIS DRAWING NOT BY THE MANUFACTURER. THE PURCHASER SHALL BE RESPONSIBLE FOR THE PROPER USE OF THIS DRAWING. MAXIMUM ALLOWABLE TOLERANCES HAVE BEEN DETERMINED AND SHOWN IN THIS DRAWING. REMOVE ALL BURRS AND SHARP EDGES.

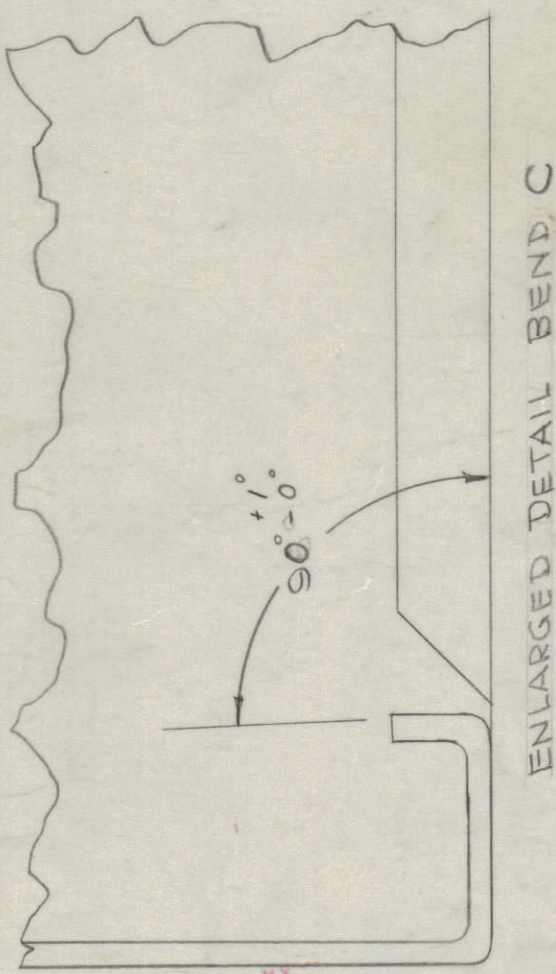


BLANK LAYOUT



1 MOUNTED IN ALL 'A' HOLES AS SHOWN AFTER FINISH.

2 MOUNTED IN ALL 'B' HOLES AS SHOWN AFTER FINISH.



ENLARGED DETAIL BEND C

METAL STAMP TMC PART NO. 1/8 HIGH GOTHIC.

UNLESS OTHERWISE SPECIFIED:  
1. USE MATERIAL THICKNESS FOR MAXIMUM RADIUS ON ALL BENDS.  
2. ALL ANGULAR BENDS 90°.  
3. REMOVE ALL BURRS AND SHARP EDGES.  
4. MOUNT INSERTS AFTER FINISHING.

A-104-1/61 DIA (FOR NT129-440-4) 10 HOLES REQ.  
B-194-1/91 DIA (FOR NT-129-632-4) 8 HOLES REQ.  
ALL BENDS 90° EXCEPT AS SHOWN  
ALL INSIDE RADII 1/16

Table with columns for issue item, description, date, and status. Includes entries for pictorial updates and hole specifications.

NOTICE TO PERSONS RECEIVING THIS DRAWING: THE TECHNICAL MATERIEL CORPORATION claims proprietary right in the technical data disclosed herein. This data is for the confidential use of engineering personnel only and may not be reproduced or used to manufacture anything shown herein without permission from THE TECHNICAL MATERIEL CORPORATION to the user. This drawing is loaned for mutual assistance and is subject to recall at any time.

Property of THE TECHNICAL MATERIEL CORPORATION  
MAMARONECK, N.Y.

REF MS-339

Table with columns for item, description, stock size, material, weight per piece, type & temper, heat treat. spec., and finish & spec. no.

Table with columns for project no., model, date, and unit.