

STANDARD DRAWING

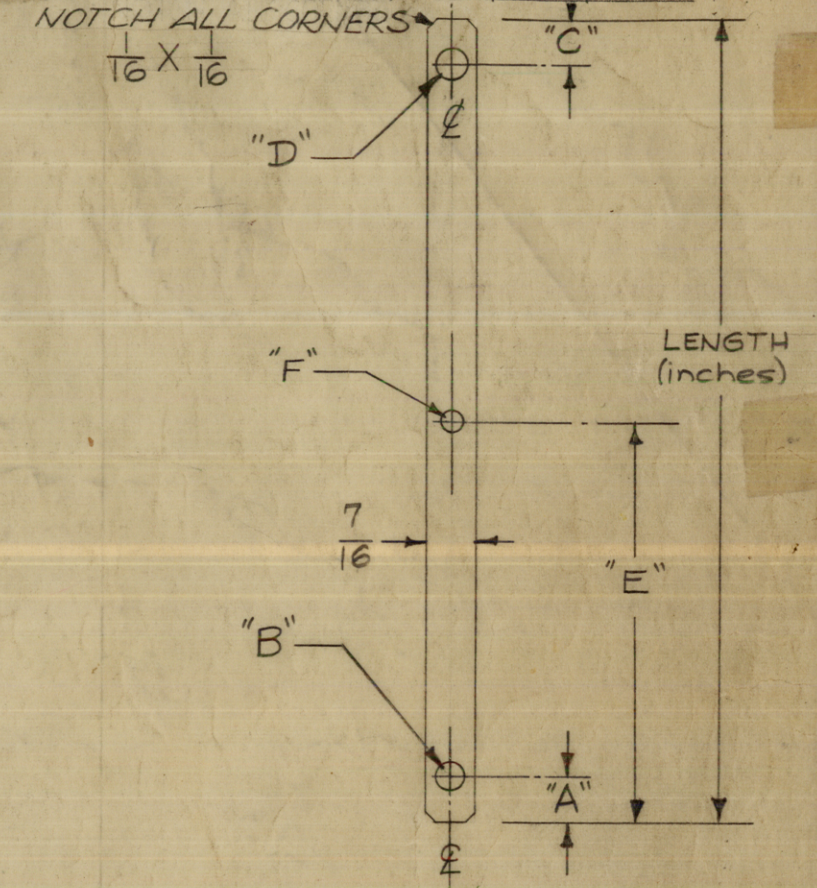
MS-202 AB

THE TECHNICAL MATERIEL CORPORATION claims proprietary right in the material disclosed hereon. This drawing is issued in confidence for engineering information only and may not be reproduced or used to manufacture anything shown hereon without permission from THE TECHNICAL MATERIEL CORPORATION to the user. This drawing is loaned for mutual assistance and is not to be used for any other purpose without the consent of THE TECHNICAL MATERIEL CORPORATION.

THE TECHNICAL MATERIEL CORPORATION
MAMARONECK, NEW YORK

| TMC NO. | "A" DIM. (INCH.) | "B" DIA. | "C" DIM. (INCH.) | "D" DIA. | "E" DIM. | "F" DIA. | MAT'L THK. |
|-----------|------------------|-------------------|------------------|-------------------|----------|-------------------|------------|
| MS-202-1- | | NH | | NH | | NH | .020 |
| MS-202-2- | 1/4 | 1/4 | 1/4 | 1/4 | 3/16 | 1/4 | .025 |
| MS-202-3 | 1/4 | 3/16 | 1/4 | 3/16 | | NH | |
| MS-202-4 | 1/4 | 1/4 | | NH | | NH | |
| MS-202-5 | 3/16 | 3/16 | 3/16 | 3/16 | | NH | |
| MS-202-6 | 3/16 | 11/64 | 3/16 | 7/32 | | NH | |
| MS-202-7 | 1/4 | 13/64 | | NH | | NH | |
| MS-202-8 | 1/4 | 7/32 | 3/16 | 5/32 | | NH | |
| MS-202-9 | 1/4 | 13/64 | 3/8 | 13/64 | | NH | |
| MS-202-10 | 3/16 | 11/64 | 3/16 | 11/64 | 5 9/16 | 11/64 | |
| MS-202-11 | 2 5/8 | 3/16 | 3 3/16 | 3/16 | | NH | |
| MS-202-12 | 1/4 | 5/32 X 5/16 SLOTS | 1/4 | 5/32 X 5/16 SLOTS | | NH | |
| MS-202-13 | 1/4 | 5/32 X 5/16 SLOTS | | NH | 3 9/16 | 5/32 X 5/16 SLOTS | |
| MS-202-14 | 1/4 | 5/32 X 3/16 SLOTS | | NH | | NH | |
| MS-202-15 | 1/4 | 5/32 X 3/16 SLOTS | | NH | | NH | |
| MS-202-16 | 3/16 | 7/32 | 3/16 | 7/32 | 11/16 | 7/32 | |
| MS-202-17 | 3/4 | 13/64 | | N.H. | | N.H. | |
| MS-202-18 | 3/16 | 11/64 | 3/16 | 11/64 | 4 1/2 | 11/64 | |
| MS-202-19 | 5/16 | 3/32 X 1/2 SLOT | 5/16 | 3/32 X 1/2 SLOT | 8 13/16 | 3/32 X 1/2 SLOT | |
| MS-202-20 | 1/4 | 13/64 | 5/16 | 9/32 | | N.H. | |
| MS-202-21 | 3/16 | 11/64 | 3/16 | 11/64 | | NH | |
| MS-202-22 | 1/4 | 13/64 | 1/4 | 13/64 | | N.H. | |
| MS-202-23 | 1/4 | 13/64 | 1/4 | 3/16 | | N.H. | |
| MS-202-24 | 1/4 | 9/32 | 1/4 | 7/32 | | N.H. | |
| MS-202-25 | 1/4 | 9/32 | 1/4 | 9/32 | | N.H. | |
| MS-202-26 | 3/16 | 11/64 | 1/4 | 1/4 | 5/8 | 11/64 | |
| MS-202-27 | 1/4 | 1/4 | 1/4 | 1/4 | | N.H. | |
| MS-202-28 | 1/4 | 1/4 | 1/4 | 13/64 | | N.H. | |
| MS-202-29 | 3/8 | 13/64 | | NH | | NH | |
| MS-202-30 | 1/4 | 13/64 | 1/4 | 9/32 | 3/4 | 13/64 | |
| MS-202-31 | 1/4 | 1/4 | 1/4 | 1/4 | 1 3/4 | 1/4 | |
| MS-202-32 | 9/16 | 13/64 | 9/16 | 13/64 | | N.H. | |
| MS-202-33 | 3/4 | 13/64 | 3/4 | 13/64 | 3 7/8 | 13/64 | |
| MS-202-34 | 3/8 | 7/32 | 3/8 | 7/32 | 1 7/8 | 7/32 | |
| MS-202-35 | 5/16 | 3/16 X 3/8 SLOT | 5/16 | 3/16 X 3/8 SLOT | 8 13/16 | 3/16 X 3/8 SLOT | |
| MS-202-36 | 1/4 | 9/32 | 3/16 | 3/16 | | N.H. | |
| MS-202-37 | 3/8 | 13/64 | 3/8 | 13/64 | | N.H. | |
| MS-202-38 | 3/16 | 13/64 | 3/16 | 15/64 | | N.H. | |
| MS-202-39 | 3/16 | 11/64 | 3/16 | 13/64 | | N.H. | .025 |

| TMC NO. | "A" DIM. | "B" DIA. | "C" DIM. | "D" DIA. | "E" DIM. | "F" DIA. | MAT'L THK. |
|----------|----------|----------|----------|----------|----------|----------|------------|
| MS202-40 | 7/32 | 9/32 | 7/32 | 11/64 | 19/32 | 11/64 | .025 |
| MS202-41 | 1/4 | 13/64 | 1/4 | 13/64 | 1 1/16 | 15/64 | .025 |
| MS202-42 | 1/4 | 11/64 | 1/4 | 5/32 | | NH | .025 |
| MS202-43 | 1/4 | 11/64 | 1/4 | 11/64 | 1 1/4 | 11/64 | .025 |
| MS202-44 | 1/4 | 11/64 | 1/4 | 11/64 | | NH | .025 |
| MS202-45 | 1/4 | 1/8 | 1/4 | 9/32 | | NH | .025 |



NOMENCLATURE AS FOLLOWS:

MS-202-1-4.500
 TMC DWG NO. DRILLING PLAN CODE LENGTH (inches)

NOTE:
NH = NO HOLE

SEE APPROPRIATE ML FOR REQ. LENGTH

| AB | MS 202 - 45 ADD | 3/9/70 | 19778 | KLAND |
|----|--|----------|-------|--------------|
| AA | MS 202 - 43, - 44 ADD | 11/25/69 | 19663 | KL ND |
| Z | MS202-42 ADDED | 8-16-66 | 16759 | RME JCB MM |
| Y | MS202-41 ADDED | 4-25-66 | 16148 | HUA JCB JC |
| W | MS-202-38, 39, 40 ADDED | 10/22/65 | 15025 | F.V. JCB JC |
| V | MATERIAL TYPE AND TEMPER WAS COMMISOFT | 9/1/65 | 14744 | H.V. JCB JC |
| U | ON-1, THK. WAS .025 MAT'L THK. COL. ADD. | 1-21-64 | 13323 | P.F. @ JCB |
| T | MS202-37 ADDED | 5-26-64 | 11424 | A.M. @ JCB |
| S | MS-202-34, 35, 36 ADDED | 1/15/64 | 10689 | @ JCB X 7/8 |
| PR | MS-202-32 & 33 ADDED | 4-6-62 | 6594 | EE JCB |
| NR | MS-202-31 ADDED | 3-22-62 | 6516 | G.S. JCB |
| N | 1/16 X 1/16 NOTCH NOTE ADDED | 1-24-62 | 6241 | EE JCB |
| M | MS-202-30 ADDED | 10-25-61 | 5759 | EE RJ JCB |
| L | MS-202-29 ADDED | 9-29-61 | 5625 | EE G.S. JCB |
| K | ADDED - 26, - 27 & - 28 | 4/26/61 | 4736 | DFM JCB JCB |
| J | ADDED FOR AT-101 MS-202-24 & 25 | 4/29/60 | 2213 | CY JCB JCB |
| H | ADD MS-202-23 | 4-11-60 | | CY JCB JCB |
| G | (For AX-130) 21-22 ADDED | 8-25-59 | | add JCB |
| F | -20 ADDED | 8/21/59 | | DM JCB JCB |
| E | -19 ADDED | 5/13/59 | | HO JCB JCB |
| D | 18 ADDED FOR RFA-2 17 ADDED FOR AT-160B | 12/22/58 | 594 | arc JCB JCB |
| C | MS 985, MS 920, MS 964, MS 979, MS 921, MS 965, MS 982, MS 914, MS 963, MS 961, MS 930 ADDED | 11 10 58 | | J.C. JCB JCB |
| B | MS-202-5 ADDED FOR RFA-1 | 6/11/58 | 2 | 16 JCB JCB |
| A | MS-202-3 ADDED FOR RFA-1 (TF-) - 4 ADDED | 5/27/58 | 1 | 16 JCB JCB |

| ISSUE | ITEM | CHANGED FROM | DATE | CH. NO. | DRAFTS | CHECKER | ENG. APP. |
|-------------------|------|---|------|---------|--------|---------|-----------|
| TOLERANCES | | SCALE: | | | | | |
| DEC. DIM. ± | | MAXIMUM ALLOWABLE TOLERANCES HAVE BEEN DETERMINED AND ANY DEVIATIONS WILL BE CAUSE FOR REJECTION. | | | | | |
| FRAC. DIM. ± 1/64 | | REMOVE ALL BURRS AND SHARP EDGES | | | | | |
| ANGULAR DIM. ± | | | | | | | |

| REQ. PER UNIT | MODEL | PROJECT NO. | ASS'Y. NO. | DATE |
|---------------|-------|-------------|------------|------|
| | | | | |

| REQ. ITEM | PART NO. | DESCRIPTION | SYMBOL |
|-------------------------|-------------------|---|-----------|
| SEE CHART | | THE TECHNICAL MATERIEL CORP. MAMARONECK, NEW YORK | |
| STOCK SIZE | | LEAD, CONNECTING, 7/16" WIDE | |
| COPPER | | | |
| MATERIAL | | | |
| OFHC SOFT | | 1610-23-57 | JCB JCB |
| TYPE & TEMPER | HEAT TREAT. SPEC. | DRAWN | CHECKED |
| 5245 Silver Plate .0003 | | JCB | JCB |
| FINISH & SPEC. NO. | ELEC. DES. APP. | MECH. DES. APP. | |
| | | | MS-202 AB |