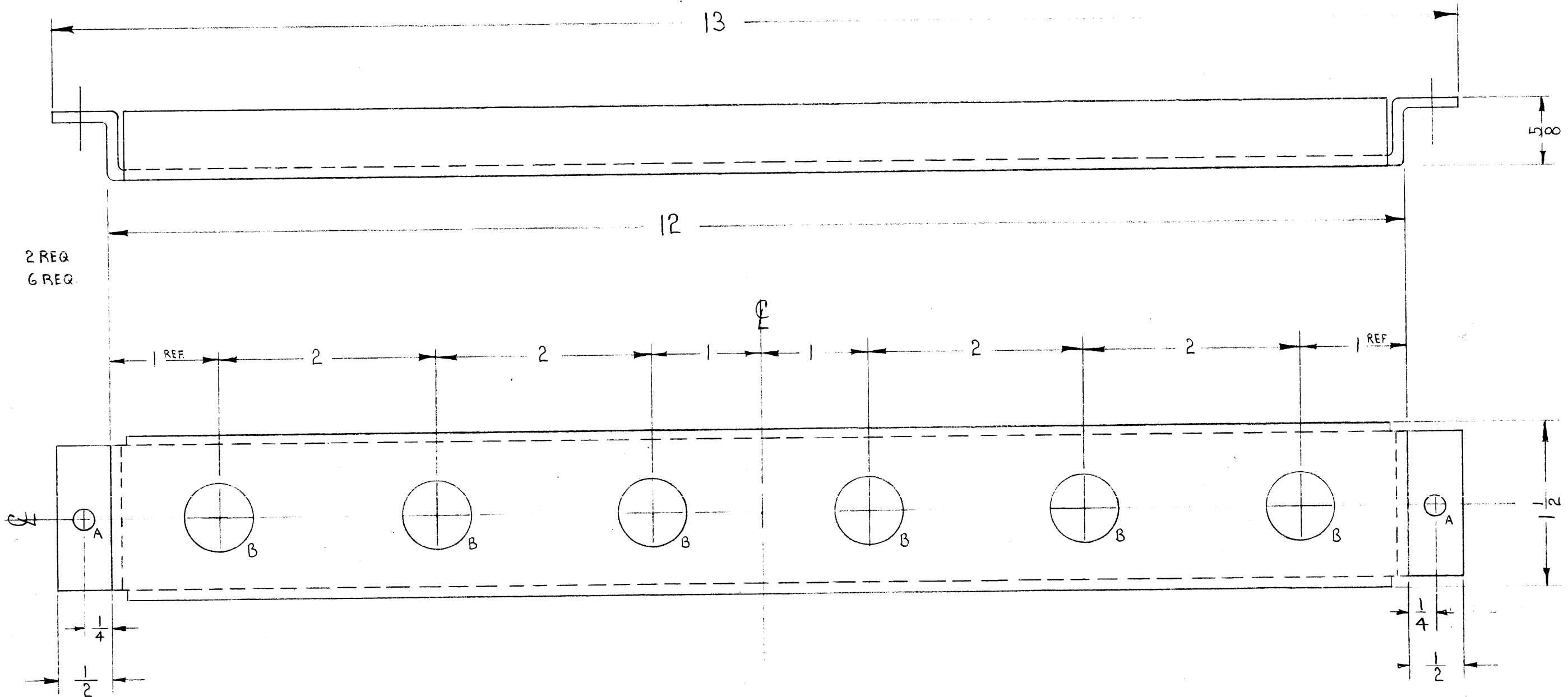


MS-2011



A- 3/16 (.187) D. 2 REQ.
 B- 5/8 (.625) D. 6 REQ.

NOTICE TO PERSONS RECEIVING THIS DRAWING

THE TECHNICAL MATERIEL CORPORATION claims proprietary right in the material disclosed hereon. This drawing is issued in confidence for engineering information only and may not be reproduced or used to manufacture anything shown hereon without permission from THE TECHNICAL MATERIEL CORPORATION to the user. This drawing is loaned for mutual assistance and is subject to recall at any time.

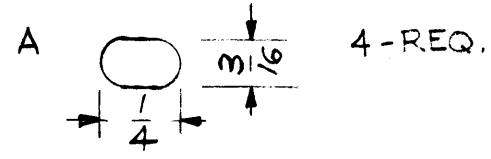
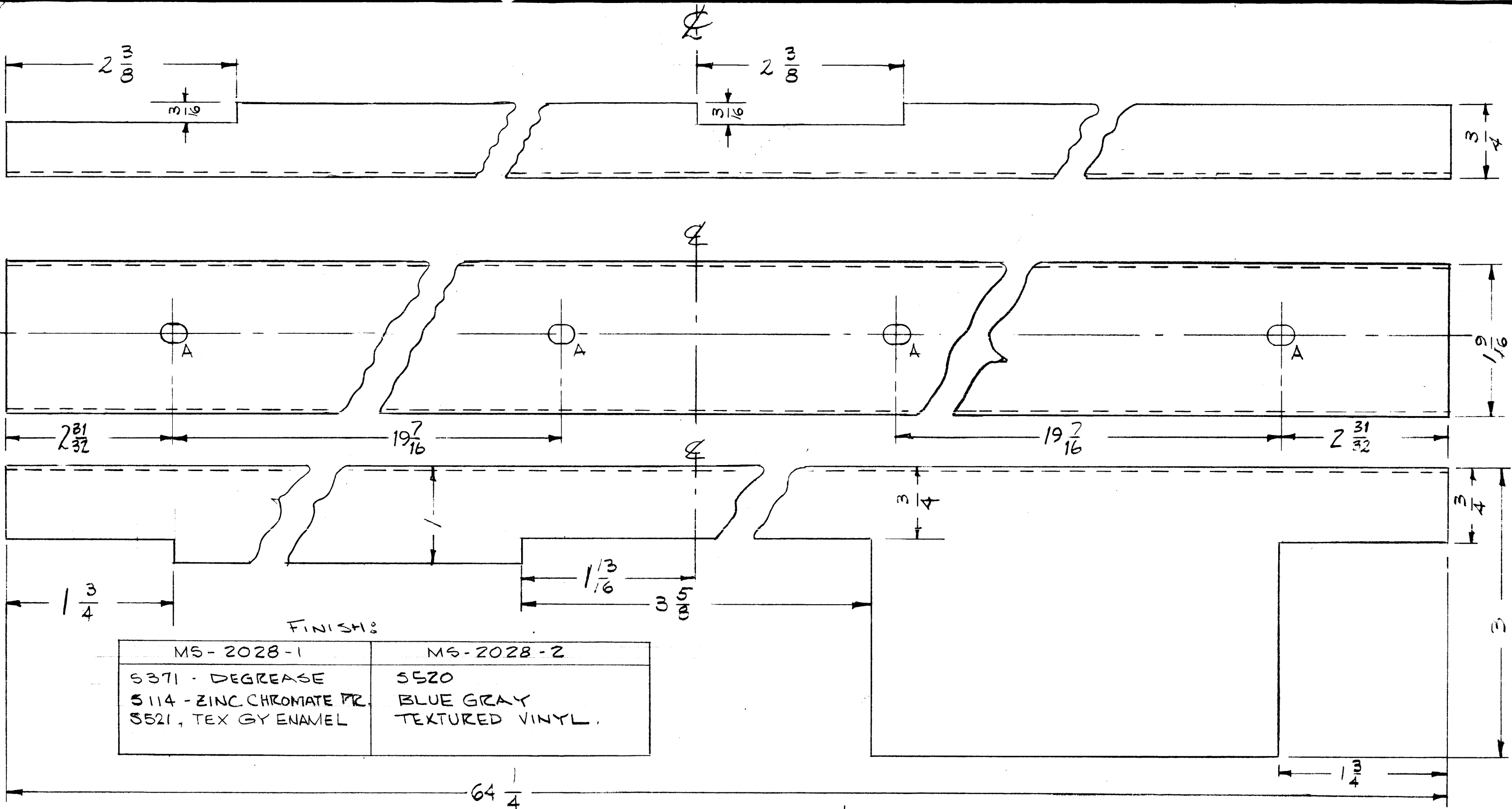
Property of:
THE TECHNICAL MATERIEL CORPORATION
 MAMARONECK, NEW YORK

ISSUE	ITEM	CHANGED FROM	DATE	CH. NO.	DRAFTS	CHECKER	ENG. APP.
TOLERANCES			SCALE:				
DEC. DIM. ±			MAXIMUM ALLOWABLE TOLERANCES HAVE BEEN DETERMINED AND ANY DEVIATIONS WILL BE CAUSE FOR REJECTION.				
FRAC. DIM. ± 1/64			REMOVE ALL BURRS AND SHARP EDGES				
ANGULAR DIM. ±							

REQ. PER UNIT	MODEL	PROJECT NO.	ASS'Y. NO.	DATE
1	AR-116	GPT-40K		1-29-60
USED ON				

REQ. ITEM	PART NO.	DESCRIPTION	SYMBOL						
.081 THK.		THE TECHNICAL MATERIEL CORP. MAMARONECK, NEW YORK							
STOCK SIZE									
ALUMINUM		BRACKET, FUSE MTG. (RELAY PANEL)							
MATERIAL									
5052-H32		<table border="1"> <tr> <td>DRAWN</td> <td>CHECKED</td> <td>FINAL APPROVAL</td> </tr> <tr> <td><i>MF</i></td> <td><i>[Signature]</i></td> <td><i>2B</i></td> </tr> </table>	DRAWN	CHECKED	FINAL APPROVAL	<i>MF</i>	<i>[Signature]</i>	<i>2B</i>	
DRAWN	CHECKED	FINAL APPROVAL							
<i>MF</i>	<i>[Signature]</i>	<i>2B</i>							
TYPE & TEMPER	HEAT TREAT. SPEC.								
S404 YEL. IRIDITE									
FINISH & SPEC. NO.	ELEC. DES. APP.	MECH. DES. APP.	MS-2011						

MS 2028 D



ISSUE	ITEM	CHANGED FROM	DATE	CH. NO.	DRAFTS	CHECKER	ENG. APP.
D		S521 WAS S115	5-31-66	16237	HLA	<i>[Signature]</i>	<i>[Signature]</i>
C	1	REVISED FINISH	1/4/64	10699	<i>[Signature]</i>	<i>[Signature]</i>	<i>[Signature]</i>
B	1	CHG. (2) DIM. $19\frac{1}{16}$ TO $19\frac{7}{16}$	5-1-60	2399	CU	<i>[Signature]</i>	<i>[Signature]</i>
A	1	2- $31/32$ WAS 1- $23/32$ 19- $1/16$ WAS 20- $3/16$	5/25/60	2371	<i>[Signature]</i>	<i>[Signature]</i>	<i>[Signature]</i>

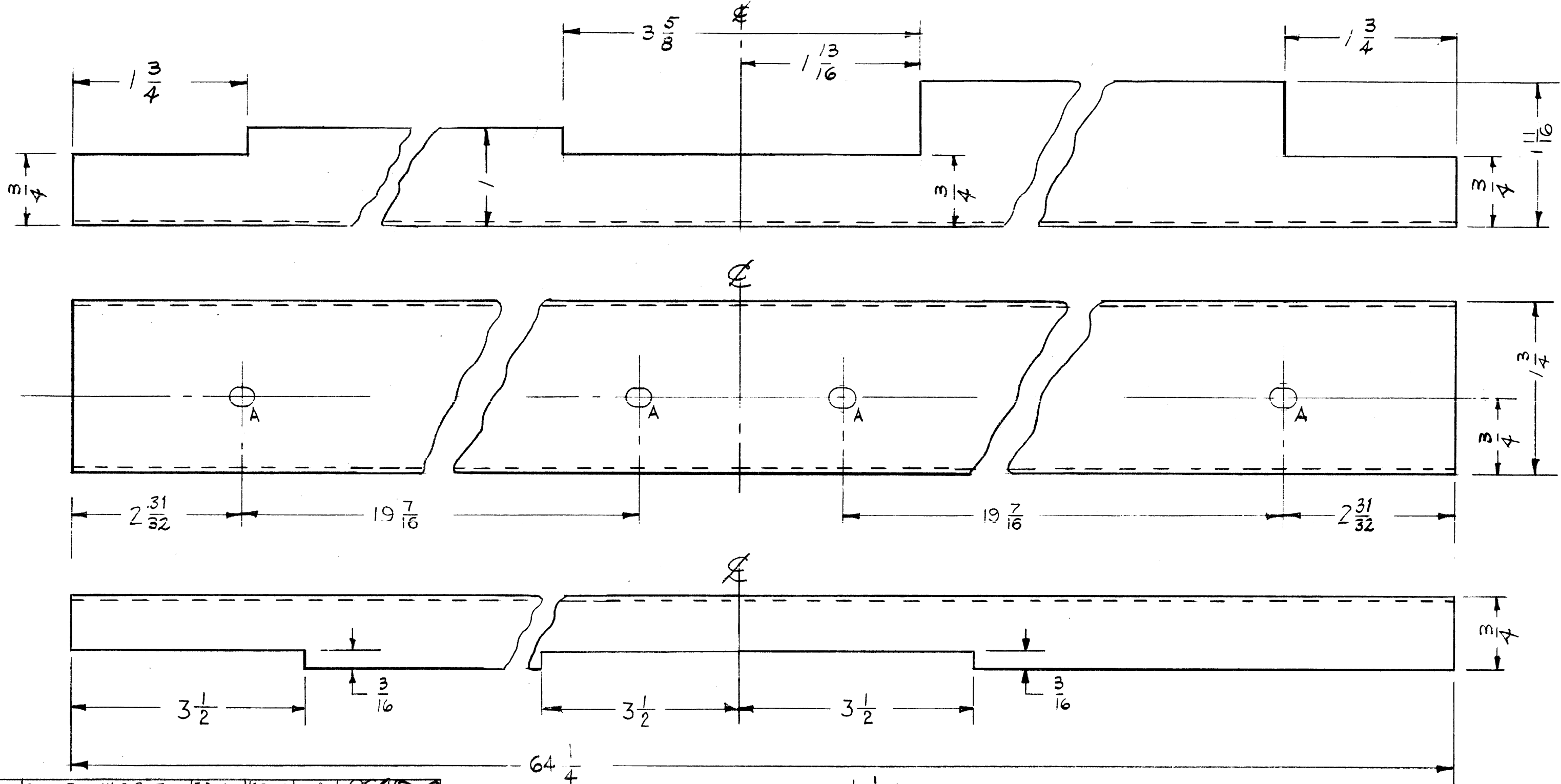
TOLERANCES	SCALE:
DEC. DIM. \pm	MAXIMUM ALLOWABLE TOLERANCES HAVE BEEN DETERMINED AND ANY DEVIATIONS WILL BE CAUSE FOR REJECTION. REMOVE ALL BURRS AND SHARP EDGES
FRAC. DIM. \pm $\frac{1}{64}$	
ANGULAR DIM. \pm	

REQ. PER UNIT	MODEL	PROJECT NO.	ASS'Y. NO.	DATE
1	AX-214	GPT-40K		2-10-60

USED ON

REQ. ITEM	PART NO.	DESCRIPTION	SYMBOL
	20 GA	THE TECHNICAL MATERIEL CORP.	
	STOCK SIZE	MAMARONECK, NEW YORK	
	STEEL	FRONT TRIM, TOP	
	MATERIAL		
	MILD	<i>[Signature]</i>	<i>[Signature]</i>
	TYPE & TEMPER	DRAWN	CHECKED
	HEAT TREAT. SPEC.		
	FINISH & SPEC. NO.		
	ELEC. DES. APP.	MECH. DES. APP.	

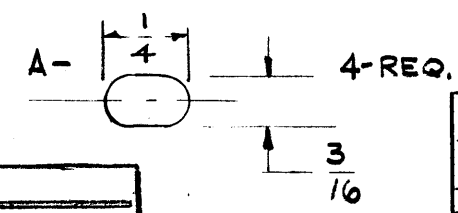
MS 2028 D



F		FINISH S521 WAS S115	5-31-66	6237	HEA	<i>[Signature]</i>	<i>[Signature]</i>
E	1	REVISED FINISH	1/4/64	10699	<i>[Signature]</i>	<i>[Signature]</i>	<i>[Signature]</i>
D	1	CHG. (2) DIM. 19 1/16 TO 19 7/16	6-1-60	2399	cy	<i>[Signature]</i>	<i>[Signature]</i>
C		2-31/32 WAS 1 23/32 19-1/16 WAS 20 3/16	5/25/60	2371	<i>[Signature]</i>	<i>[Signature]</i>	<i>[Signature]</i>
B	1	3/2 DIMS WERE 2 3/8	3-24-60	1931	cy	<i>[Signature]</i>	<i>[Signature]</i>
A	1	1-11/16 WAS 1-1/2	3/16/60	-	cy	<i>[Signature]</i>	<i>[Signature]</i>
ISSUE	ITEM	CHANGED FROM	DATE	CH. NO.	DRAFTS	CHECKER	ENG. APP.
TOLERANCES			SCALE:				
DEC. DIM. ±			MAXIMUM ALLOWABLE TOLERANCES HAVE BEEN DETERMINED AND ANY DEVIATIONS WILL BE CAUSE FOR REJECTION.				
FRAC. DIM. ± 1/64			REMOVE ALL BURRS AND SHARP EDGES				
ANGULAR DIM. ±							

FINISH:

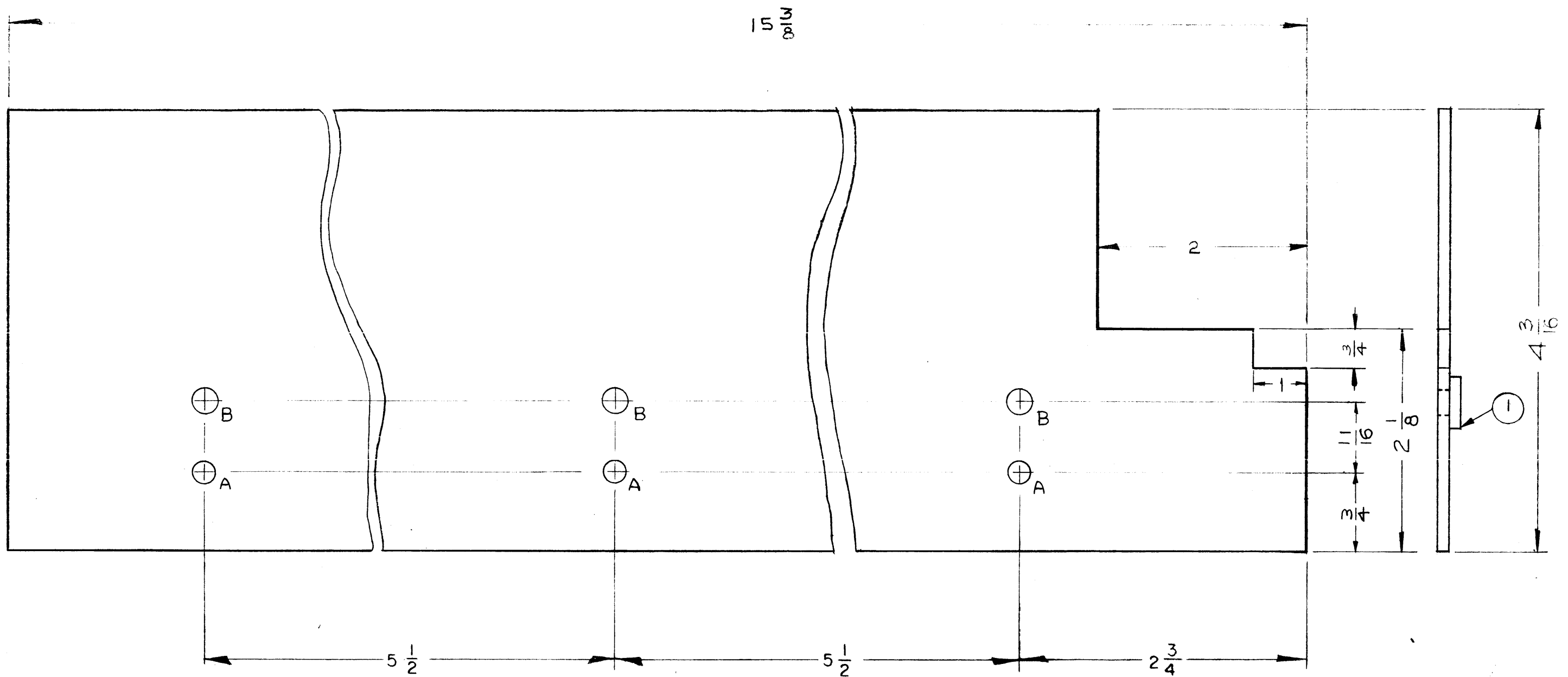
MS-2029-1	MS-2029-2
S371 - DEGREASE	S520
S114 - ZINC CHROMATE PR.	BLUE GRAY
S521 - TEX GY ENAMEL	TEXTURED VINYL



1	AX-214	GPT-40K	2-10-60
REQ. PER UNIT	MODEL	PROJECT NO.	DATE
USED ON			

REQ. ITEM	PART NO.	DESCRIPTION	SYMBOL
	20 GA.	THE TECHNICAL MATERIEL CORP.	
	STOCK SIZE	MAMARONECK, NEW YORK	
	STEEL	TRIM, BOTTOM FRONT	
MATERIAL			
MILD		<i>[Signature]</i>	<i>[Signature]</i>
TYPE & TEMPER	HEAT TREAT. SPEC.	DRAWN	CHECKED
SEE FINISH NOTE			
FINISH & SPEC. NO.		ELEC. DES. APP.	MECH. DES. APP.
			MS-2029 F

A - $\frac{13}{64}$ D 3 REQ.
 B - $\frac{221}{224}$ D 3 REQ.



NOTICE TO PERSONS RECEIVING THIS DRAWING

THE TECHNICAL MATERIEL CORPORATION claims proprietary right in the material disclosed hereon. This drawing is issued in confidence for engineering information only and may not be reproduced or used to manufacture anything shown hereon without permission from THE TECHNICAL MATERIEL CORPORATION to the user. This drawing is loaned for mutual assistance and is subject to recall at any time.

Property of:
 THE TECHNICAL MATERIEL CORPORATION
 MAMARONECK, NEW YORK

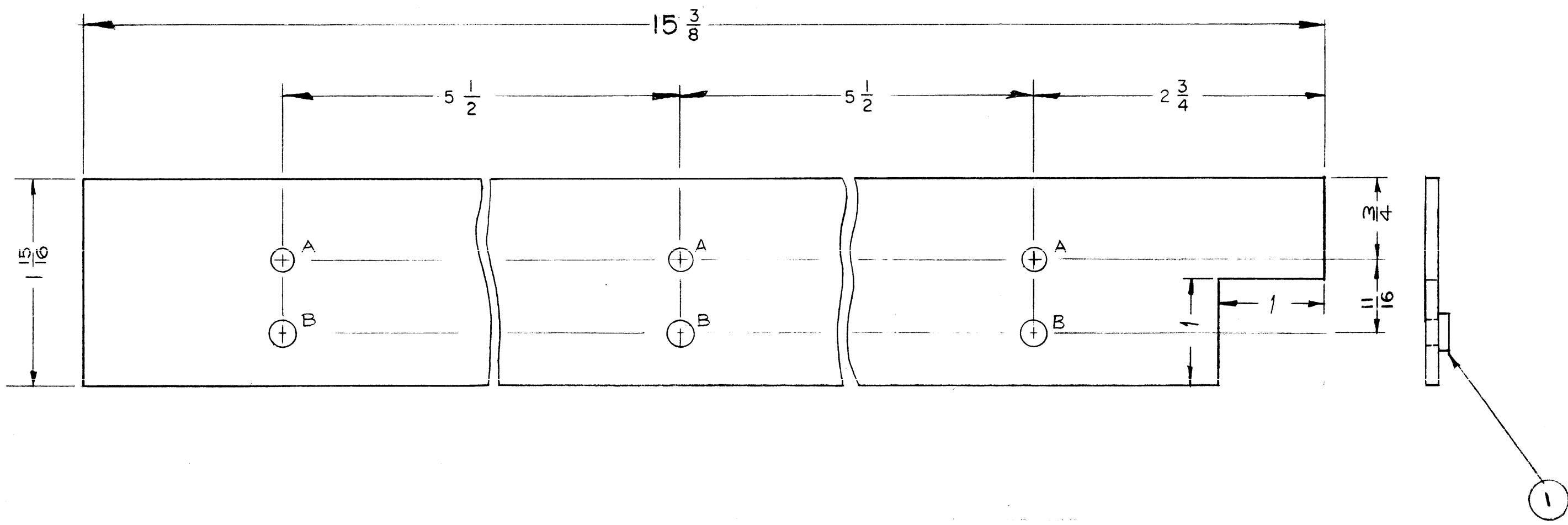
ISSUE	ITEM	CHANGED FROM	DATE	CH. NO.	DRAFTS	CHECKER	ENG. APP.
B	1	1x3/4" NOTCH ADDED	10/18/60	3215	RA	[Signature]	[Signature]
A	3	3/4 DIM. WAS 15/16 DIM.	8/3	2	ay	[Signature]	[Signature]
	2	4-V4 DIM. WAS 4-3/8	60	82	[Signature]	[Signature]	[Signature]
	1	3/4 LIP DELETED					

TOLERANCES		SCALE: #
DEC. DIM. ±	MAXIMUM ALLOWABLE TOLERANCES HAVE BEEN DETERMINED AND ANY DEVIATIONS WILL BE CAUSE FOR REJECTION. REMOVE ALL BURRS AND SHARP EDGES	
FAC DIM. ±		
FIN. DIM. ±	64	

REQ. PER UNIT	1	GPT-40K	AX-211	MAMARONECK, NEW YORK	2-12-60
MODEL		PROJECT NO.		ASS'Y. NO.	DATE
USED ON					

3	1	NT-129-832-6	NUT, SWAGE, ROUND TYPE	
REQ. ITEM		PART NO.		SYMBOL
1/8 THICK			THE TECHNICAL MATERIEL CORP.	
STOCK SIZE			MAMARONECK, NEW YORK	
ALUMINUM			LEFT SIDE BRACKET SHIELD	
MATERIAL				
5052-H32			[Signature]	[Signature]
TYPE & TEMPER	HEAT TREAT. SPEC.	DRAWN	CHECKED	FINAL APPROVAL
S404	YELLOW IRIDITE	[Signature]	[Signature]	MS-2048 B
FINISH & SPEC. NO.		ELEC. DES. APP.	MECH. DES. APP.	

A - $\frac{13}{64}$ DIA. 3 REQ.
 B - $\frac{221}{224}$ DIA. 3 REQ.



NOTICE TO PERSONS RECEIVING THIS DRAWING

THE TECHNICAL MATERIEL CORPORATION claims proprietary right in the material disclosed hereon. This drawing is issued in confidence for engineering information only and may not be reproduced or used to manufacture anything shown hereon without permission from THE TECHNICAL MATERIEL CORPORATION to the user. This drawing is loaned for mutual assistance and is subject to recall at any time.

Property of:
 THE TECHNICAL MATERIEL CORPORATION
 MAMARONECK, NEW YORK

ISSUE	ITEM	CHANGED FROM	DATE	CH. NO.	DRAFTS	CHECKER	ENG. APP.
B	1	1"X1" NOTCH Added	10/18/60	3215	RW	JCB	[Signature]
A	3	3/4" LIP DELETED	8	20000	Cy	JCB	[Signature]
	2	3/4 DIM. WAS 15/16 DIM.	3				
	1	1-15/16 DIM. WAS 2-1/8	60				

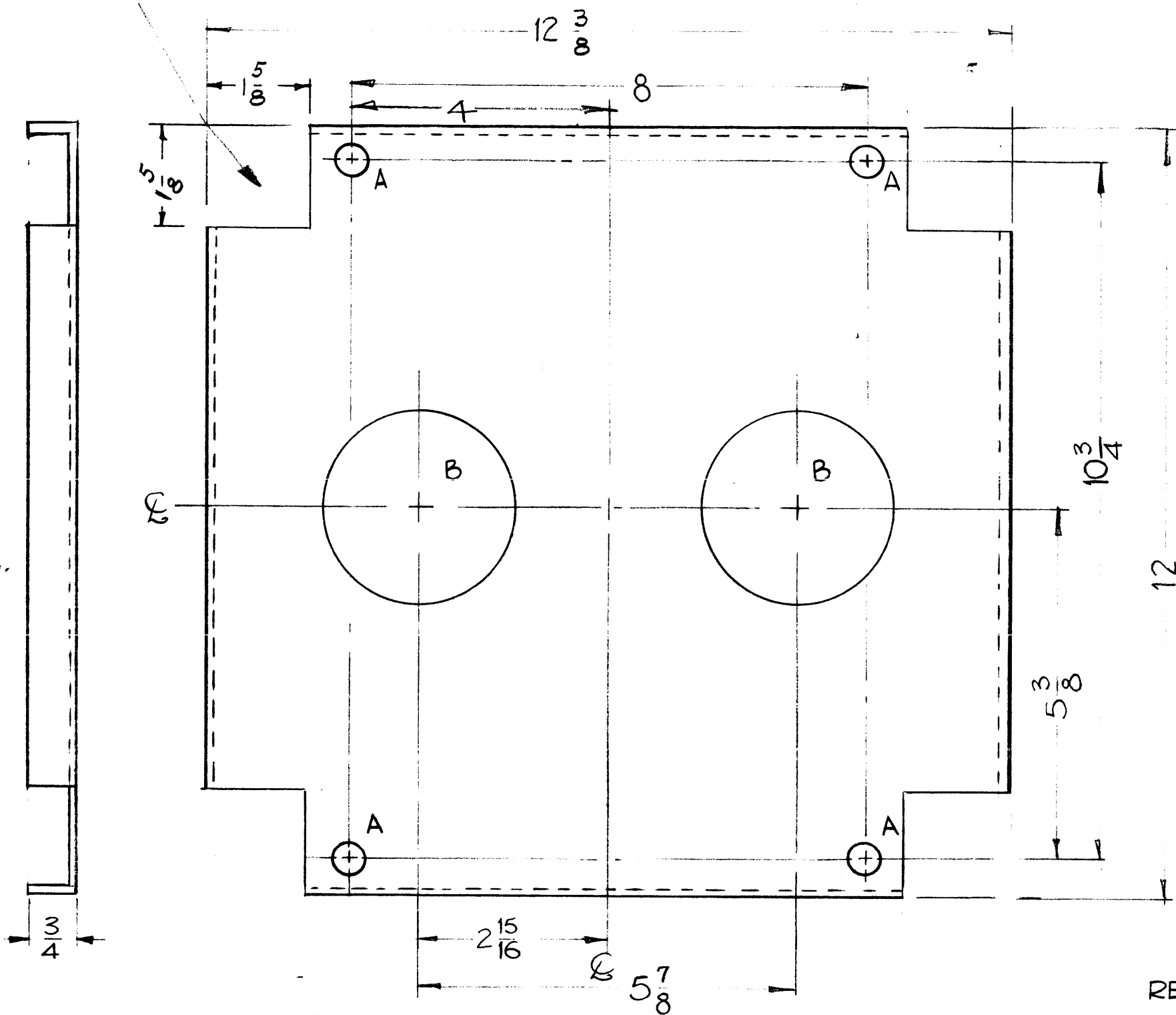
TOLERANCES		SCALE: \pm
DEC. DIM. \pm	MAXIMUM ALLOWABLE TOLERANCES HAVE BEEN DETERMINED AND ANY DEVIATIONS WILL BE CAUSE FOR REJECTION.	
FRAC. DIM. \pm	REMOVE ALL BURRS AND SHARP EDGES	
ANGULAR DIM. \pm 1/64		

1	GPT-40K	AX-211		2-12-60
REQ. PER UNIT	MODEL	PROJECT NO.	ASS'Y. NO.	DATE
USED ON				

3	1	NT-129-832-6	SWAGE, NUT, ROUND TYPE		
REQ. ITEM	PART NO.		DESCRIPTION		SYMBOL
1/8 THICK			THE TECHNICAL MATERIEL CORP.		
STOCK SIZE			MAMARONECK, NEW YORK		
ALUMINUM			RIGHT SIDE		
MATERIAL			BRACKET, SHIELD		
5052-H32			Cy		[Signature]
TYPE & TEMPER	HEAT TREAT. SPEC.	DRAWN	CHECKED	FINAL APPROVAL	
S 404 YELLOW IRIDITE			[Signature]	MS-2049 B	
FINISH & SPEC. NO.		ELEC. DES. APP.	MECH. DES. APP.		

MS-2050

TYPICAL CORNER
4 REQ



NOTE ~
3/4" LIPS ON
ALL FOUR SIDES.

HOLES
A ~ 1/2 (.500) DIA. 4
B ~ 3" DIA 2

NOTICE TO PERSONS RECEIVING THIS DRAWING

THE TECHNICAL MATERIEL CORPORATION claims proprietary right in the material disclosed hereon. This drawing is issued in confidence for engineering information only and may not be reproduced or used to manufacture anything shown hereon without permission from THE TECHNICAL MATERIEL CORPORATION to the user. This drawing is loaned for mutual assistance and is subject to recall at any time.

Property of:
THE TECHNICAL MATERIEL CORPORATION
MAMARONECK, NEW YORK

NOTE
1/8" RADIUS BENDS

REF ~ TMC DWG. NO. LD-787(2)

ISSUE	ITEM	CHANGED FROM	DATE	CH. NO.	DRAFTS	CHECKER	ENG. APP.
TOLERANCES			SCALE:				
DEC. DIM. ±			MAXIMUM ALLOWABLE TOLERANCES HAVE BEEN DETERMINED AND ANY DEVIATIONS WILL BE CAUSE FOR REJECTION.				
FRAC. DIM. ± 1/64			REMOVE ALL BURRS AND SHARP EDGES				
ANGULAR DIM. ±							

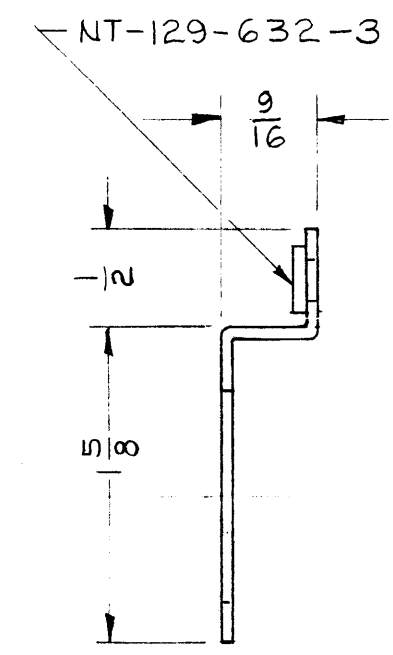
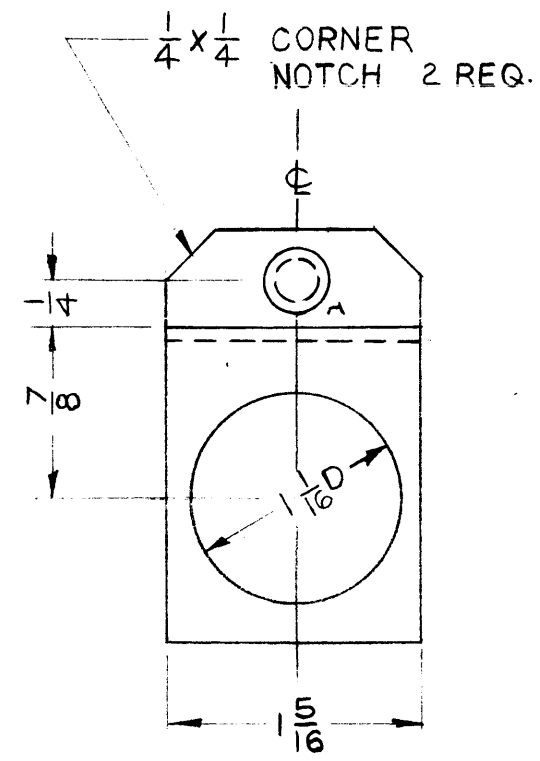
2	QPT-4CK	AP-103		2/17/60
REQ. PER UNIT	MODEL	PROJECT NO.	ASS'Y. NO.	DATE
USED ON				

REQ. ITEM	PART NO.	DESCRIPTION	SYMBOL
1/8 THK STOCK SIZE		THE TECHNICAL MATERIEL CORP. MAMARONECK, NEW YORK	
ALUMINUM		PLATE, CAPACITOR	
MATERIAL			
5052-H32		<i>D. J. Mann</i>	<i>J. B.</i>
TYPE & TEMPER	HEAT TREAT. SPEC.	DRAWN	CHECKED
E-404 IRIDITE		<i>G.M.</i>	
FINISH & SPEC. NO.		ELEC. DES. APP.	MECH. DES. APP.
			MS-2050

MS-2058 B

A ~ $\frac{.191}{.194}$

1 REQ.



NOTICE TO PERSONS RECEIVING THIS DRAWING

THE TECHNICAL MATERIEL CORPORATION claims proprietary right in the material disclosed hereon. This drawing is issued in confidence for engineering information only and may not be reproduced or used to manufacture anything shown hereon without permission from THE TECHNICAL MATERIEL CORPORATION to the user. This drawing is loaned for mutual assistance and is subject to recall at any time.

Property of:
 THE TECHNICAL MATERIEL CORPORATION
 MAMARONECK, NEW YORK

ISSUE	ITEM	CHANGED FROM	DATE	CH. NO.	DRAFTS	CHECKER	ENG. APP.
B	1	1/16 Dim. Deleted	11-14-61	5834	EB	<i>[Signature]</i>	<i>[Signature]</i>
A		NT- PUT ON OPPOSITE SIDE DIM. 9/16 WAS 1/2	5/11/60	2258	CS	<i>[Signature]</i>	<i>[Signature]</i>

TOLERANCES

SCALE: -

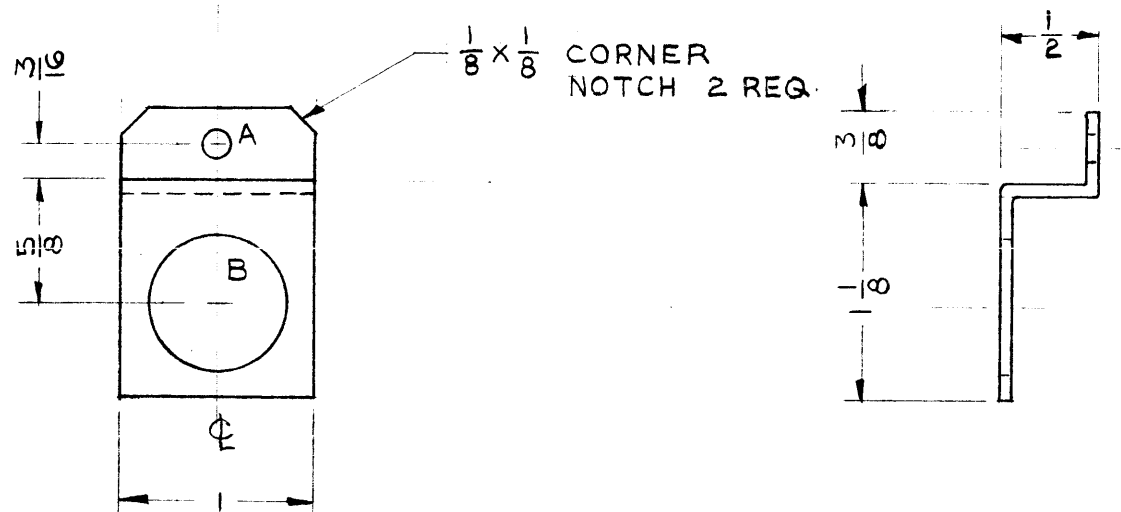
DEC. DIM. ±
 FRAC. DIM. ± 1/64
 ANGULAR DIM. ±

MAXIMUM ALLOWABLE TOLERANCES HAVE BEEN DETERMINED AND ANY DEVIATIONS WILL BE CAUSE FOR REJECTION.
 REMOVE ALL BURRS AND SHARP EDGES

4	GPT-40K	AX-209		2/24/60
REQ. PER UNIT	MODEL	PROJECT NO.	ASS'Y. NO.	DATE
USED ON				

1	1	NT-129-632-3	SWAGE NUT		
REQ. ITEM	PART NO.		DESCRIPTION		SYMBOL
		.051 THK STOCK SIZE	THE TECHNICAL MATERIEL CORP. MAMARONECK, NEW YORK		
		ALUMINUM	BRACKET, RESISTOR MTG., PA DECK		
		MATERIAL			
		5052-H32	<i>[Signature]</i>	<i>[Signature]</i>	<i>[Signature]</i>
		TYPE & TEMPER	HEAT TREAT. SPEC.	DRAWN	CHECKED
		B404 IRIDITE		<i>[Signature]</i>	<i>[Signature]</i>
		FINISH & SPEC. NO.	ELEC. DES. APP.	MECH. DES. APP.	
					MS-2058 B

A ~ 1/8 DIA. 1 REQ.
 B ~ 23/32 DIA. 1 REQ.



NOTICE TO PERSONS RECEIVING THIS DRAWING

THE TECHNICAL MATERIEL CORPORATION claims proprietary right in the material disclosed hereon. This drawing is issued in confidence for engineering information only and may not be reproduced or used to manufacture anything shown hereon without permission from THE TECHNICAL MATERIEL CORPORATION to the user. This drawing is loaned for mutual assistance and is subject to recall at any time.

Property of:
 THE TECHNICAL MATERIEL CORPORATION
 MAMARONECK, NEW YORK

ISSUE	ITEM	CHAN ED FROM	DATE	CH. NO.	DRAFTS	CHECKER	ENG. APP.
B	1	"B" HOLE WAS 1/16 DIA	4-15-63	8779			
A	1	1/16 Dim. Deleted	11-14-61	5834			

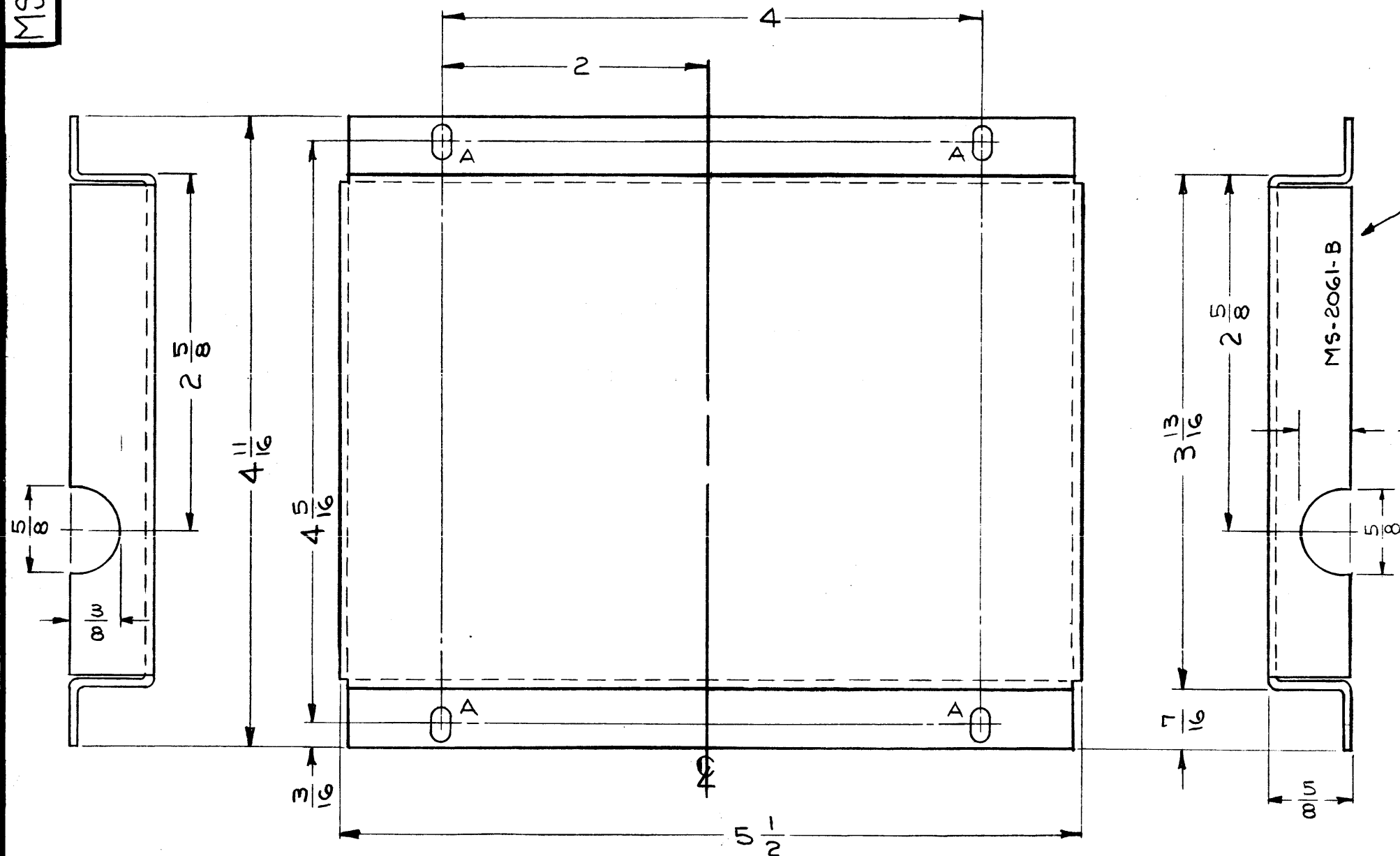
TOLERANCES		SCALE:	
DEC. DIM. ±		MAXIMUM ALLOWABLE TOLERANCES HAVE BEEN DETERMINED AND ANY DEVIATIONS WILL BE CAUSE FOR REJECTION.	
FRAC. DIM. ± 1/64		REMOVE ALL BURRS AND SHARP EDGES	
ANGULAR DIM. ±			

1	GPT-40K	AX-210	2/24/60
REQ. PER UNIT	MODEL	PROJECT NO.	DATE
USED ON			

REQ. ITEM	PART NO.	DESCRIPTION	SYMBOL
	.051 THK	THE TECHNICAL MATERIEL CORP. MAMARONECK, NEW YORK	
	STOCK SIZE		
	ALUMINUM	BRACKET, RESISTOR STANDOFF	
	MATERIAL	MTG., (PA CONTROL PANEL	
	5052-H32		
	TYPE & TEMPER	HEAT TREAT. SPEC.	DRAWN
	S404 IRIDITE		CHECKED
	FINISH & SPEC. NO.	ELEC. DES. APP.	MECH. DES. APP.
			MS-2059
			B

MS-2061 B

LEGEND		
HOLE	DESCRIPTION	REQ.
A	1/8 x 1/4 SLOTS	4



NOT TO BE REPRODUCED OR RECEIVED THIS DRAWING

THE TECHNICAL MATERIEL CORPORATION claims proprietary right in the material disclosed hereon. This drawing is issued in confidence for engineering information only and may not be reproduced or used to manufacture anything shown hereon without permission from THE TECHNICAL MATERIEL CORPORATION to the user. This drawing is loaned for mutual assistance and is subject to recall at any time.

Property of:
 THE TECHNICAL MATERIEL CORPORATION
 MAMARONECK, NEW YORK

- UNLESS OTHERWISE SPECIFIED:**
1. USE MATERIAL THICKNESS FOR MAXIMUM RADIUS ON ALL BENDS.
 2. ALL ANGULAR BENDS 90°.
 3. REMOVE ALL BURRS AND SHARP EDGES.

REF: LD-699

ISSUE ITEM	CHANGED FROM	DATE	CH. NO.	DRAFTS	CHECKER	ENG. APP.
B	2 LEFT SIDE VIEW ADDED	12-3-63	10511			
	1 PICTORIAL UPDATED					
A	2 5/8 WAS 1/2	5/9/60	2247			
	1 2 5/8 WAS 2 1/16					

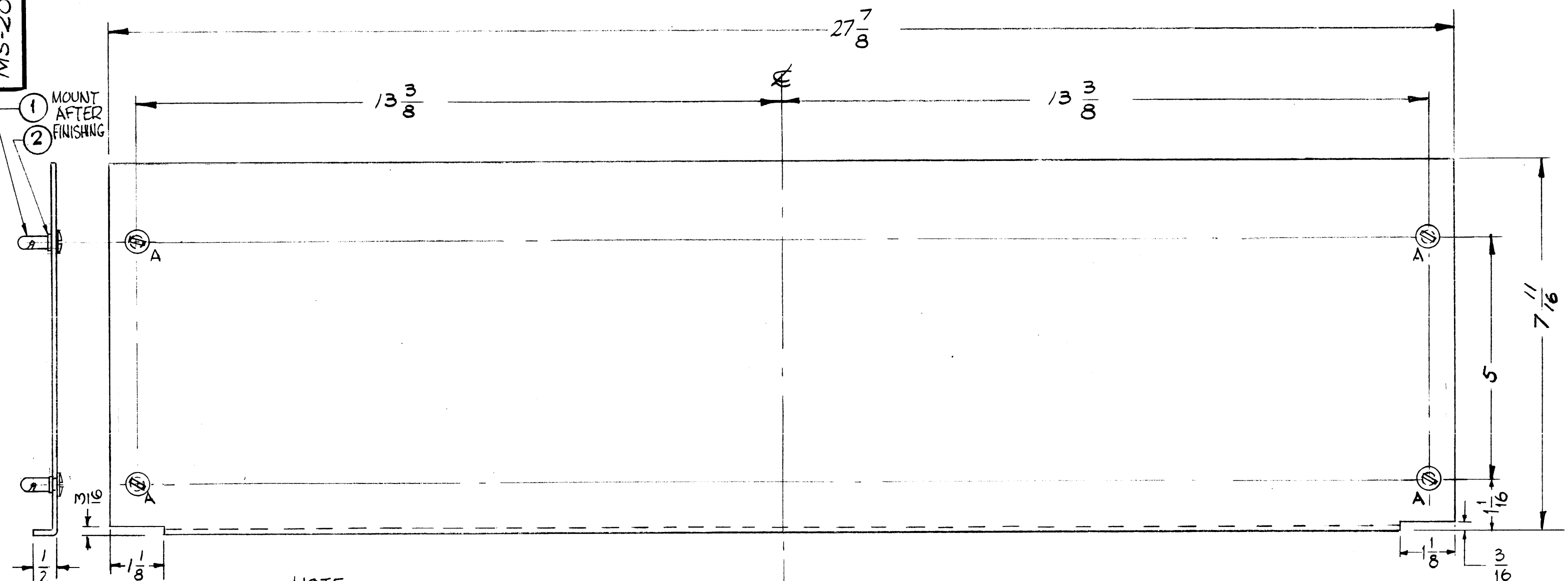
TOLERANCES: DEC. DIM. ±, FRAC. DIM. ±, AN ULAR DIM. ± 1/64

SCALE: MAXIMUM ALLOWABLE TOLERANCES HAVE BEEN DETERMINED AND ANY DEVIATIONS WILL BE CAUSE FOR REJECTION. REMOVE ALL BURRS AND SHARP EDGES

1	VOX 3-4			2/29/60
REQ. PER UNIT	MODEL	PROJECT NO.	ASS'Y. NO.	DATE
USED ON				

REQ. ITEM	PART NO.	DESCRIPTION	SYMBOL
	.051	THE TECHNICAL MATERIEL CORP. MAMARONECK, NEW YORK	
	STOCK SIZE		
	ALUMINUM	COVER INSULATOR	
	MATERIAL		
5052-H32			
TYPE & TEMPER	HEAT TREAT. SPEC.	DRAWN	FINAL APPROVAL
SA04 YELLOW IRIDITE			MS-2061 B
FINISH & SPEC. NO.		ELEC. DES. APP.	MECH. DES. APP.

MS-2077 B



NOTE
HARDWARE TO BE SUPPLIED
AND ASSEMBLED BY TMC.

A- 1/4 (.250) DIA. 4 REQ.

PROPERTY RECEIVED THIS DRAWING
THE TECHNICAL MATERIEL CORPORATION claims
no responsibility for the accuracy of the information disclosed hereon.
This drawing is loaned in confidence for engineering
information only and may not be reproduced or used
to manufacture anything shown hereon without per-
mission from THE TECHNICAL MATERIEL CORPORA-
TION to the user. This drawing is loaned for mutual
assistance and is subject to recall at any time.

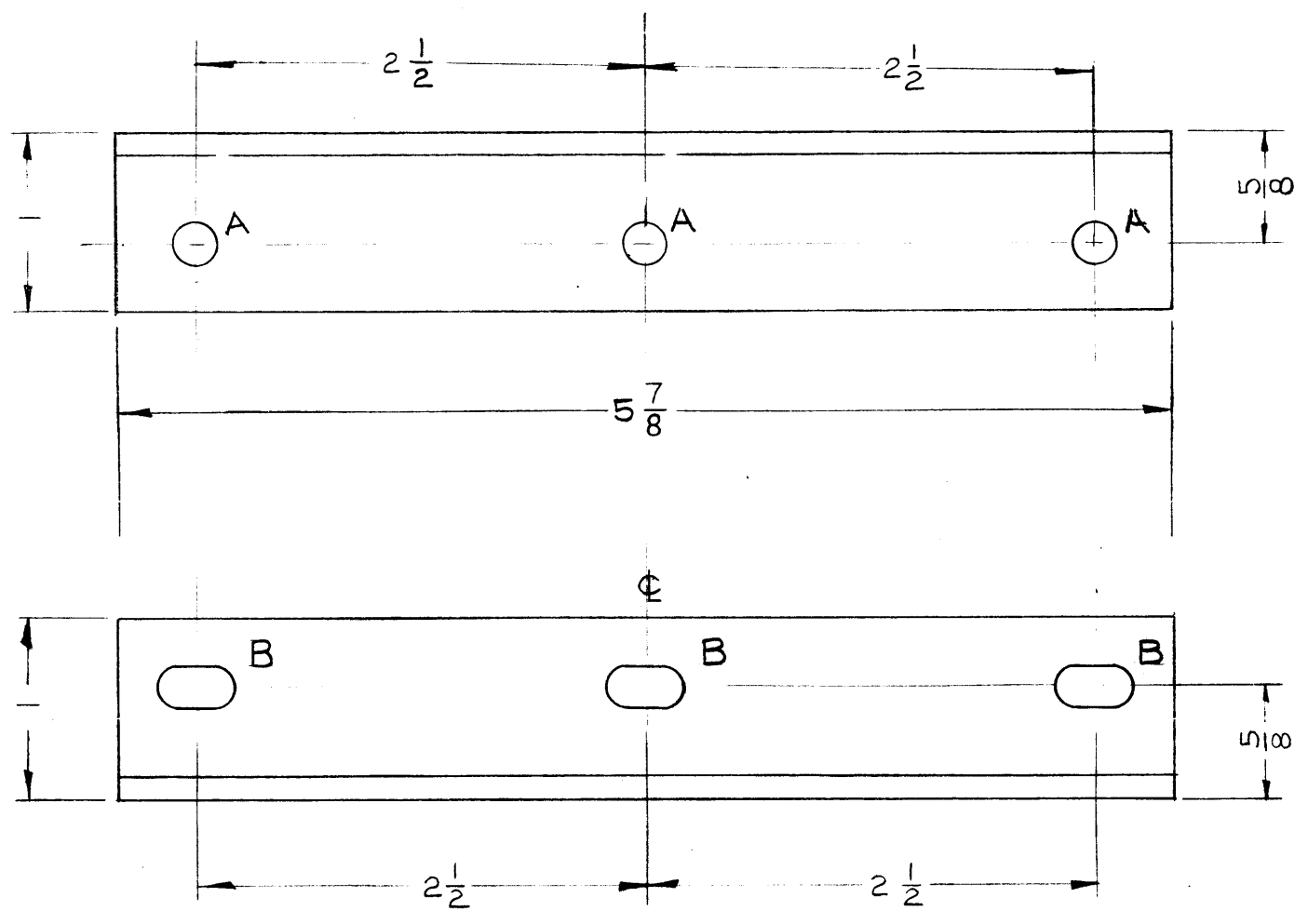
Property of:
THE TECHNICAL MATERIEL CORPORATION
MAMARONECK, NEW YORK

REQ. ITEM	PART NO.	DESCRIPTION	SYMBOL
4 2	FS-109-3	RING, STUD RETAINING	
4 1	FS-110-7	STUD	
.081		THE TECHNICAL MATERIEL CORP. MAMARONECK, NEW YORK	
ALUMINUM		COVER, ~ REAR	
MATERIAL		ANT TUNER	
5052-H32		DRAWN	CHECKED
TYPE & TEMPER	HEAT TREAT. SPEC.	FINAL APPROVAL	
S404 YEL. IRIDITE		MS-2077 B	
FINISH & SPEC. NO.		ELEC. DES. APP.	MECH. DES. APP.

ISSUE	ITEM	CHANGED FROM	DATE	CH. NO.	DRAFTS	CHECKER	ENG. APP.
B		ADD IT. 1 & 2 TO PICT.	3-2-67	17879	HLA		
A	1	ADD-FS-109-3, FS-110-7	4-8-60	2111	CM		
TOLERANCES			SCALE: 1/2 (DO NOT SCALE)				
DEC. DIM. ±			MAXIMUM ALLOWABLE TOLERANCES HAVE BEEN DETERMINED AND ANY DEVIATIONS WILL BE CAUSE FOR REJECTION. REMOVE ALL BURRS AND SHARP EDGES				
FRAC. DIM. ±							
ANGULAR DIM. ±							

REQ. PER UNIT	MODEL	PROJECT NO.	ASSY. NO.	DATE
1	GPT 40K	AT-101		3-2-60
USED ON				

MS-2084
A



A ~ 7/32 DRILL 3 REQ.
B ~ 7/32 X 7/16 SLOT 3 REQ.

NOTICE TO PERSONS RECEIVING THIS DRAWING

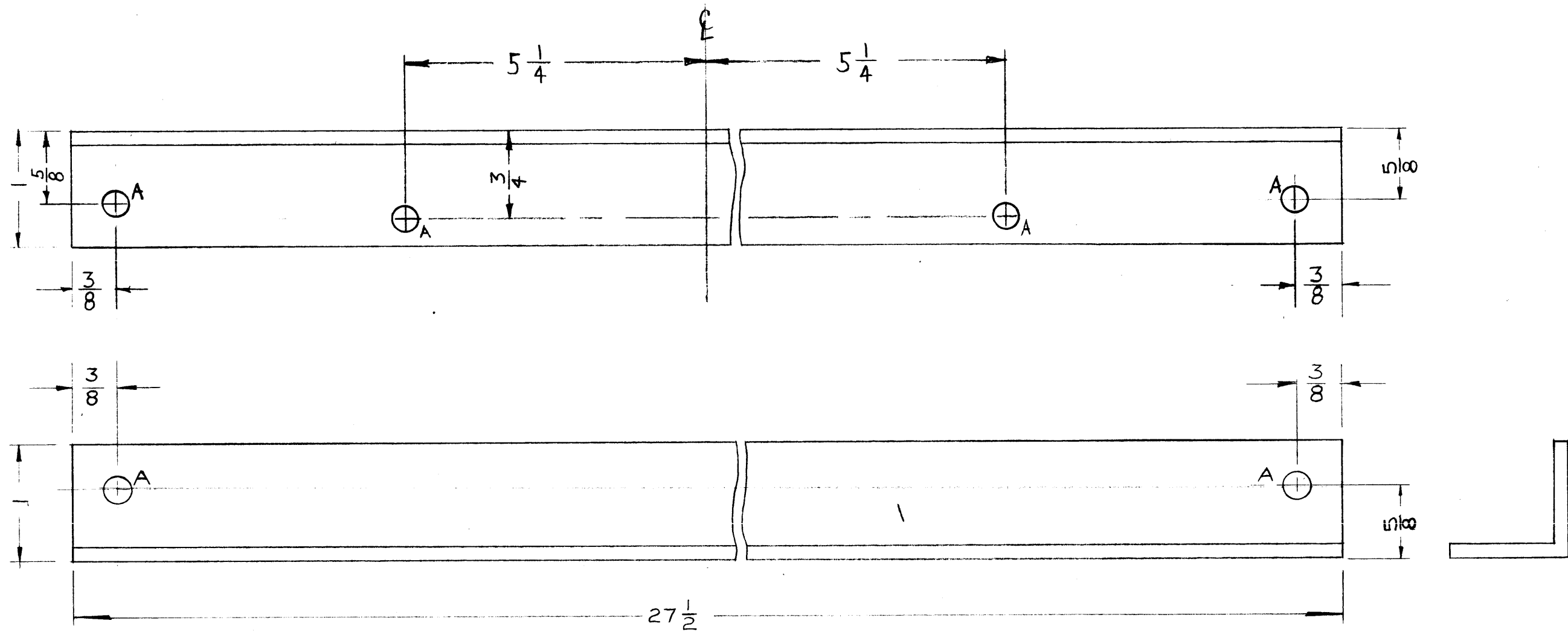
THE TECHNICAL MATERIEL CORPORATION claims proprietary right in the material disclosed hereon. This drawing is issued in confidence for engineering information only and may not be reproduced or used to manufacture anything shown hereon without permission from THE TECHNICAL MATERIEL CORPORATION to the user. This drawing is loaned for mutual assistance and is subject to recall at any time.

Property of:
THE TECHNICAL MATERIEL CORPORATION
MAMARONECK, NEW YORK

ISSUE	ITEM	CHANGED FROM	DATE	CH. NO.	DRAFTS	CHECKER	ENG. APP.
A	1	"B" SLOTS WERE "A" HOLES	5.26.64	11428	NSB	@	DB
TOLERANCES			SCALE:				
DEC. DIM. ±			MAXIMUM ALLOWABLE TOLERANCES HAVE BEEN DETERMINED AND ANY DEVIATIONS WILL BE CAUSE FOR REJECTION.				
FRAC. DIM. ±			REMOVE ALL BURRS AND SHARP EDGES				
ANGULAR DIM. ±							

REQ. PER UNIT	MODEL	PROJECT NO.	ASS'Y. NO.	DATE
1	GPT-40K	AT-101		3/3/60
USED ON				

REQ. ITEM	PART NO.	DESCRIPTION	SYMBOL
	1X1X 1/8	THE TECHNICAL MATERIEL CORP.	
	STOCK SIZE	MAMARONECK, NEW YORK	
	ALUMINUM	BRACKET, COIL	
	MATERIAL	SIDE PLATE	
5052-H32		CU	DB
TYPE & TEMPER	HEAT TREAT. SPEC.	DRAWN	CHECKED
S404 YELLOW IRIDITE			
FINISH & SPEC. NO.	ELEC. DES. APP.	MECH. DES. APP.	
			MS-2084 A



NOTICE TO PERSONS RECEIVING THIS DRAWING

THE TECHNICAL MATERIEL CORPORATION claims proprietary right in the material disclosed hereon. This drawing is issued in confidence for engineering information only and may not be reproduced or used to manufacture anything shown hereon without permission from THE TECHNICAL MATERIEL CORPORATION to the user. This drawing is loaned for mutual assistance and is subject to recall at any time.

Property of:
THE TECHNICAL MATERIEL CORPORATION
MAMARONECK, NEW YORK

ISSUE	ITEM	CHANGED FROM	DATE	CH. NO.	DRAFTS	CHECKER	ENG. APPR.
A	1	TWO "A" HOLES ADDED	3-11-60	~	918	16	DB
	2	TWO "A" HOLES RELOCATED					

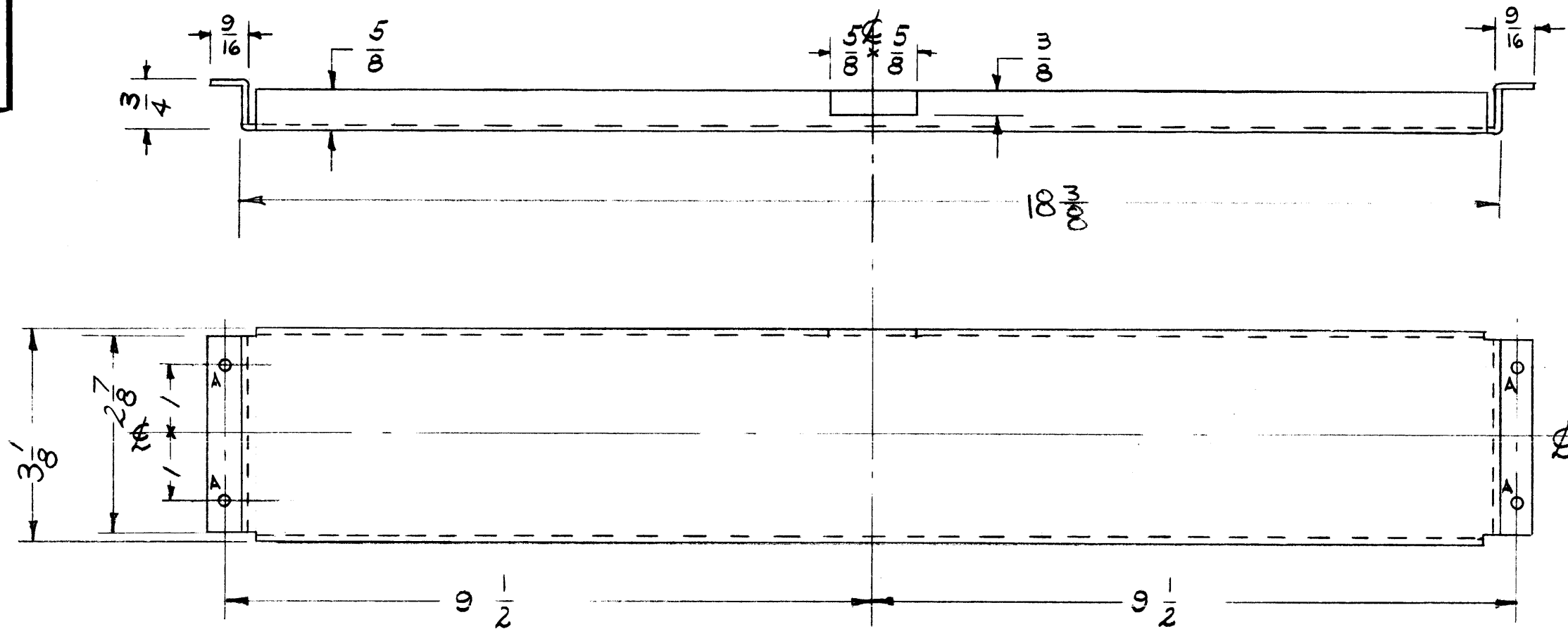
TOLERANCES: DEC. DIM. ± 1/64, FRAC. DIM. ± 1/64, ANGULAR DIM. ±

SCALE: MAXIMUM ALLOWABLE TOLERANCES HAVE BEEN DETERMINED AND ANY DEVIATIONS WILL BE CAUSE FOR REJECTION. REMOVE ALL BURRS AND SHARP EDGES

REQ. PER UNIT	MODEL	PROJECT NO.	ASS'Y. NO.	DATE
1	GPT-46K	AT-101		3/3/60
USED ON				

REQ. ITEM	PART NO.	DESCRIPTION	SYMBOL
	1X1X 1/8	THE TECHNICAL MATERIEL CORP.	
	STOCK SIZE	MAMARONECK, NEW YORK	
	ALUMINUM	BRACKET REAR	
	MATERIAL	ANTENNA TUNER	
		CU	DB
		DRAWN	CHECKED
		TYPE & TEMPER	HEAT TREAT. SPEC.
	S 404	YELLOW IRIDITE	
	FINISH & SPEC. NO.	ELEC. DES. APP.	MECH. DES. APP.
		MS-2085 A	

MS-2096
A



A-5/32 (.156) D.

4 REQ.

FINISH - ALL SURFACES
 S404 - YELLOW IRIDITE
 S114 - ZINC CHROMATE PRIMER
 S115 - TMC SMOOTH GREY ENAMEL
 OR PRIME PAINT TO CUST. SPEC.

NOTICE TO PERSONS RECEIVING THIS DRAWING

THE TECHNICAL MATERIEL CORPORATION claims proprietary right in the material disclosed hereon. This drawing is issued in confidence for engineering information only and may not be reproduced or used to manufacture anything shown hereon without permission from THE TECHNICAL MATERIEL CORPORATION to the user. This drawing is loaned for mutual assistance and is subject to recall at any time.

Property of:

THE TECHNICAL MATERIEL CORPORATION
 MAMARONECK, NEW YORK

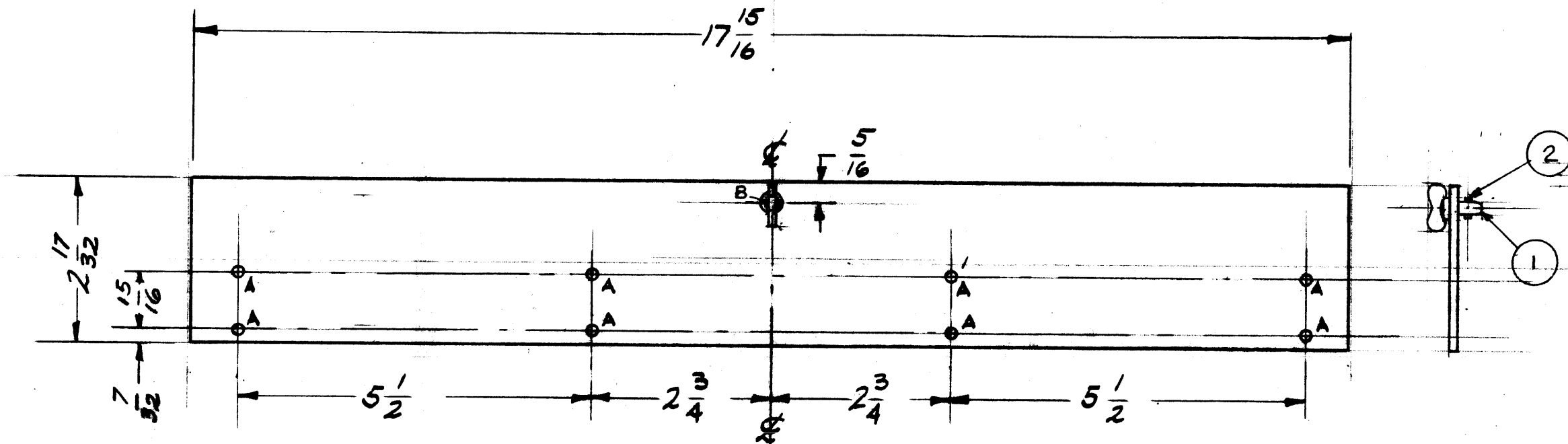
ISSUE	ITEM	CHANGED FROM	DATE	CH. NO.	DRAFTS	CHECKER	ENG. APP.
A	1	DELETED 19 1/2 DIM.	5/23/61	4941		JCB	SAM
TOLERANCES			SCALE: 1/2				
DEC. DIM. ±			MAXIMUM ALLOWABLE TOLERANCES HAVE BEEN DETERMINED AND ANY DEVIATIONS WILL BE CAUSE FOR REJECTION. REMOVE ALL BURRS AND SHARP EDGES				
FRAC. DIM. ±							
ANGULAR DIM. ±							

1	GPT-40K	AP-103	3-7-60
REQ. PER UNIT	MODEL	PROJECT NO.	ASS'Y. NO.
USED ON			

REQ. ITEM	PART NO.	DESCRIPTION	SYMBOL
.081		THE TECHNICAL MATERIEL CORP. MAMARONECK, NEW YORK	
ALUMINUM		SHIELD, SAFETY P.S. FRAME	
5052-H32		10RILLE	2.3
TYPE & TEMPER	HEAT TREAT. SPEC.	DRAWN	CHECKED
SEE NOTE			
FINISH & SPEC. NO.	ELEC. DES. APP.	MECH. DES. APP.	MS-2096 A

A - 5/32 (.156) D.
B - 7/32 (.218) D.

8 REQ
1"



NOTE: FINISH ALL SURFACES

- S-404 YELLOW IRIDITE
- S-114 ZINC CHROMATE PRIMER
- S-115 TMC SMOOTH GREY ENAMEL.
- OR PRIME & PAINT TO CUST SPEC.

NOTICE TO PERSONS RECEIVING THIS DRAWING

THE TECHNICAL MATERIEL CORPORATION claims proprietary right in the material disclosed hereon. This drawing is issued in confidence for engineering information only and may not be reproduced or used to manufacture anything shown hereon without permission from THE TECHNICAL MATERIEL CORPORATION to the user. This drawing is loaned for mutual assistance and is subject to recall at any time.

Property of:
THE TECHNICAL MATERIEL CORPORATION
MAMARONECK, NEW YORK

REF. (4) LD-706

ISSUE	ITEM	CHANGED FROM	DATE	CH. NO.	DRAFTS	CHECKER	ENG. APP.
B	1	ITEM (1) WAS FS-106-1	7-13-64	11798			
A	2	ITEM #2 PN-105 ADDED	6/20/60	2528			
A	1	ITEM #1 FS-106-1 ADDED					

TOLERANCES: DEC. DIM. ± 1/64
FRAC. DIM. ± 1/64
AN ULAR DIM. ± 1/64

SCALE: 1/2

MAXIMUM ALLOWABLE TOLERANCES HAVE BEEN DETERMINED AND ANY DEVIATIONS WILL BE CAUSE FOR REJECTION. REMOVE ALL BURRS AND SHARP EDGES

1	6PT-4QK	AP-103		3-3-60
RE PER UNIT	MODEL	PROJECT NO.	ASS'Y. NO.	DATE
USED ON				

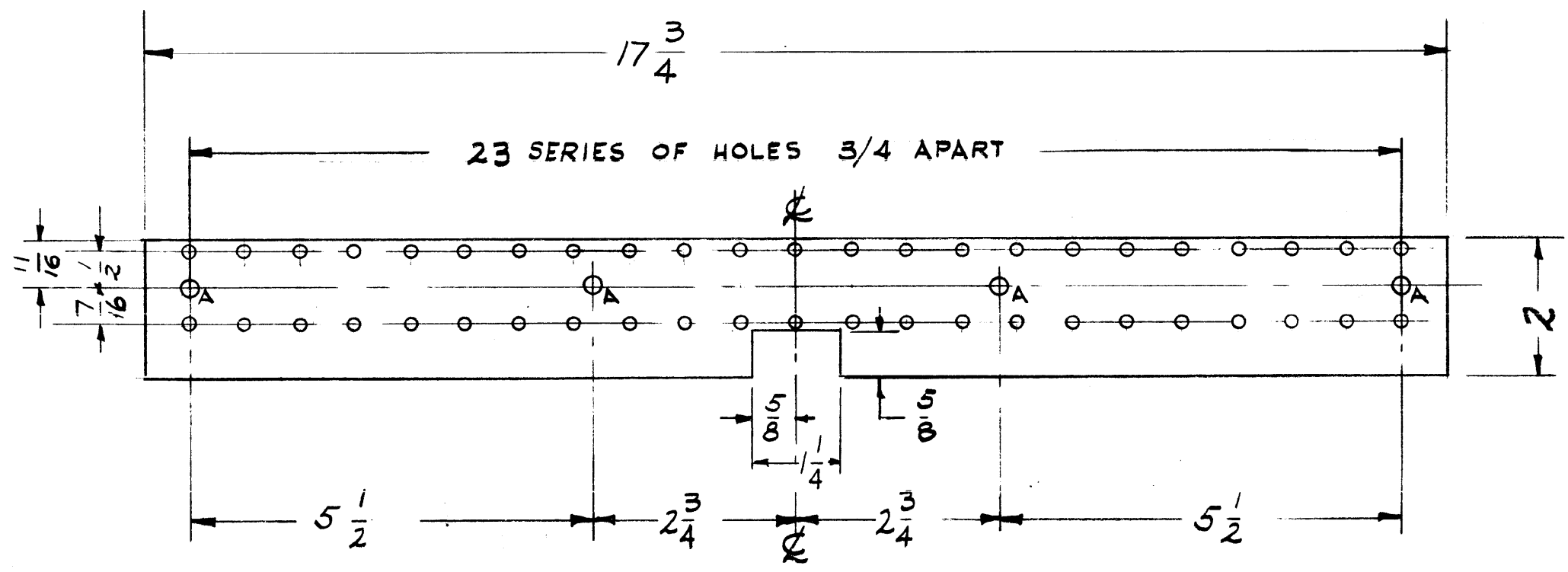
REQ.	ITEM	PART NO.	DESCRIPTION	SYMBOL
1	2	PN-105	CROSS PIN NO. 2	B
1	1	FS-106-6	STUD, WING HEAD	B
		1/B	STOCK SIZE	
		ALUMINUM	MATERIAL	
		5052 H32		
		SEE NOTE	FINISH & SPEC. NO.	

THE TECHNICAL MATERIEL CORP.
MAMARONECK, NEW YORK

DOOR, PANEL P.S. FRAME

DRILLER: [Signature]
CHECKER: [Signature]
FINAL APPROVAL: [Signature] MS-2097 B

MS-2099



A- 7/32 (.218) D. 4 REQ.
 ALL OTHER HOLES # 30 46 REQ.

FINISH NOTE - ALL SURFACES
 S404 - IRIDITE (YELLOW)
 S114 - ZINC CHROMATE PRIMER
 S115 - SMOOTH GREY ENAMEL
 REF - LD-707

NOTICE TO PERSONS RECEIVING THIS DRAWING

THE TECHNICAL MATERIEL CORPORATION claims proprietary right in the material disclosed hereon. This drawing is issued in confidence for engineering information only and may not be reproduced or used to manufacture anything shown hereon without permission from THE TECHNICAL MATERIEL CORPORATION to the user. This drawing is loaned for mutual assistance and is subject to recall at any time.

Property of:
 THE TECHNICAL MATERIEL CORPORATION
 MAMARONECK, NEW YORK

ISSUE	ITEM	CHANGED FROM	DATE	CH. NO.	DRAFTS	CHECKER	ENG. APP.
TOLERANCES		SCALE: 1/2					
DEC. DIM. ±		MAXIMUM ALLOWABLE TOLERANCES HAVE BEEN DETERMINED AND ANY DEVIATIONS WILL BE CAUSE FOR REJECTION.					
FRAC. DIM. ±		REMOVE ALL BURRS AND SHARP ED ES					
ANGULAR DIM. ±		1/64					

1	AP-103		GPT-40K	3-3-60
REQ. PER UNIT	MODEL	PROJECT NO.	ASSY. NO.	DATE
USED ON				

REQ. ITEM	PART NO.	DESCRIPTION	SYMBOL
.081		THE TECHNICAL MATERIEL CORP. MAMARONECK, NEW YORK	
ALUMINUM		PLATE FUSE MT'G.	
5052-H32			
TYPE & TEMPER	HEAT TREAT. SPEC.	DRAWN	CHECKED
SEE NOTE		DRILLA	MS-2099
FINISH & SPEC. NO.		ELEC. DES. APP.	MECH. DES. APP.