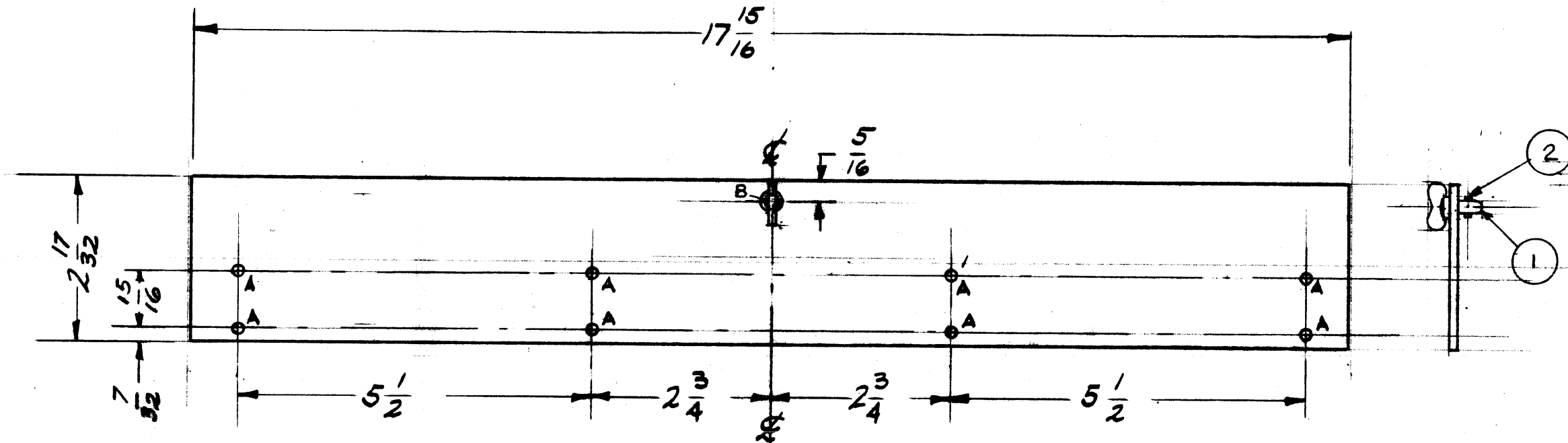


MS-2097 B

A - 5/32 (.156) D.
B - 7/32 (.218) D.

8 REQ
1"



NOTE: FINISH ALL SURFACES

- S-404 YELLOW IRIDITE
- S-114 ZINC CHROMATE PRIMER
- S-115 TMC SMOOTH GREY ENAMEL.
- OR PRIME & PAINT TO CUST SPEC.

NOTICE TO PERSONS RECEIVING THIS DRAWING

THE TECHNICAL MATERIEL CORPORATION claims proprietary right in the material disclosed hereon. This drawing is issued in confidence for engineering information only and may not be reproduced or used to manufacture anything shown hereon without permission from THE TECHNICAL MATERIEL CORPORATION to the user. This drawing is loaned for mutual assistance and is subject to recall at any time.

Property of:
THE TECHNICAL MATERIEL CORPORATION
MAMARONECK, NEW YORK

REF. (4) LD-706

| ISSUE | ITEM | CHANGED FROM | DATE | CH. NO. | DRAFTS | CHECKER | ENG. APP. |
|-------|------|------------------------|---------|---------|--------|---------|-----------|
| B | 1 | ITEM (1) WAS FS-106-1 | 7-13-64 | 11798 | | | |
| A | 2 | ITEM #2 PN-105 ADDED | 6/20/60 | 2528 | | | |
| A | 1 | ITEM #1 FS-106-1 ADDED | | | | | |

| | | |
|-------------------|--|--|
| TOLERANCES | | SCALE: 1/2 |
| DEC. DIM. ± | | MAXIMUM ALLOWABLE TOLERANCES HAVE BEEN DETERMINED AND ANY DEVIATIONS WILL BE CAUSE FOR REJECTION. REMOVE ALL BURRS AND SHARP EDGES |
| FRAC. DIM. ± 1/64 | | |
| AN ULAR DIM. ± | | |

| | | | | |
|-------------|---------|-------------|------------|--------|
| 1 | 6PT-4QK | AP-103 | | 3-3-60 |
| RE PER UNIT | MODEL | PROJECT NO. | ASS'Y. NO. | DATE |
| USED ON | | | | |

| REQ. | ITEM | PART NO. | DESCRIPTION | SYMBOL |
|------|------|--------------------|-------------------|--------|
| 1 | 2 | PN-105 | CROSS PIN NO. 2 | B |
| 1 | 1 | FS-106-6 | STUD, WING HEAD | B |
| | | 1/B | STOCK SIZE | |
| | | ALUMINUM | MATERIAL | |
| | | 5052 H32 | | |
| | | TYPE & TEMPER | HEAT TREAT. SPEC. | |
| | | SEE NOTE | | |
| | | FINISH & SPEC. NO. | | |

| | |
|--|-----------------------------|
| THE TECHNICAL MATERIEL CORP. MAMARONECK, NEW YORK | DODR, PANEL P.S. FRAME |
| DRILLER: [Signature] | CHECKER: [Signature] |
| DATE: [Signature] | FINAL APPROVAL: [Signature] |
| ELEC. DES. APP. [Signature] | MECH. DES. APP. [Signature] |
| MS-2097 B | |