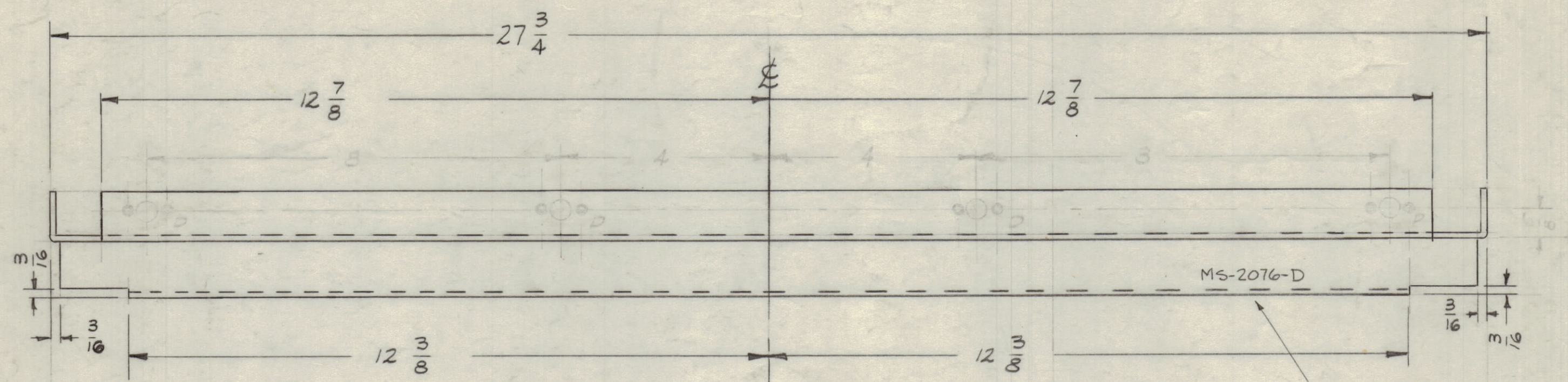
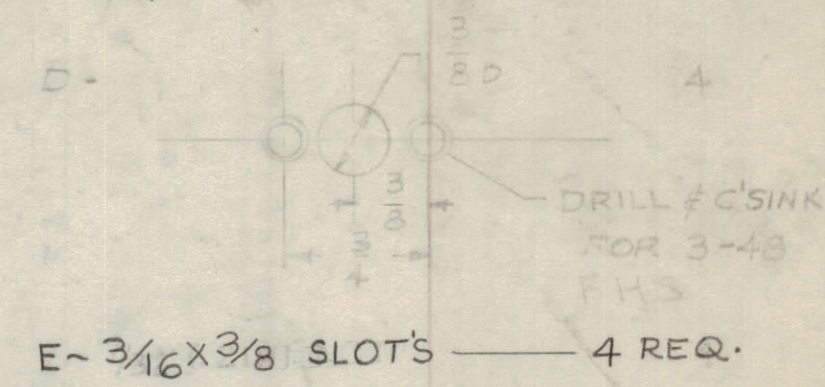


IF IT IS FOUND DESIRABLE TO CHANGE ANY TOLERANCE OR OTHER DETAIL SPECIFIED ON THIS DRAWING NOTIFY THE PURCHASER PROMPTLY.

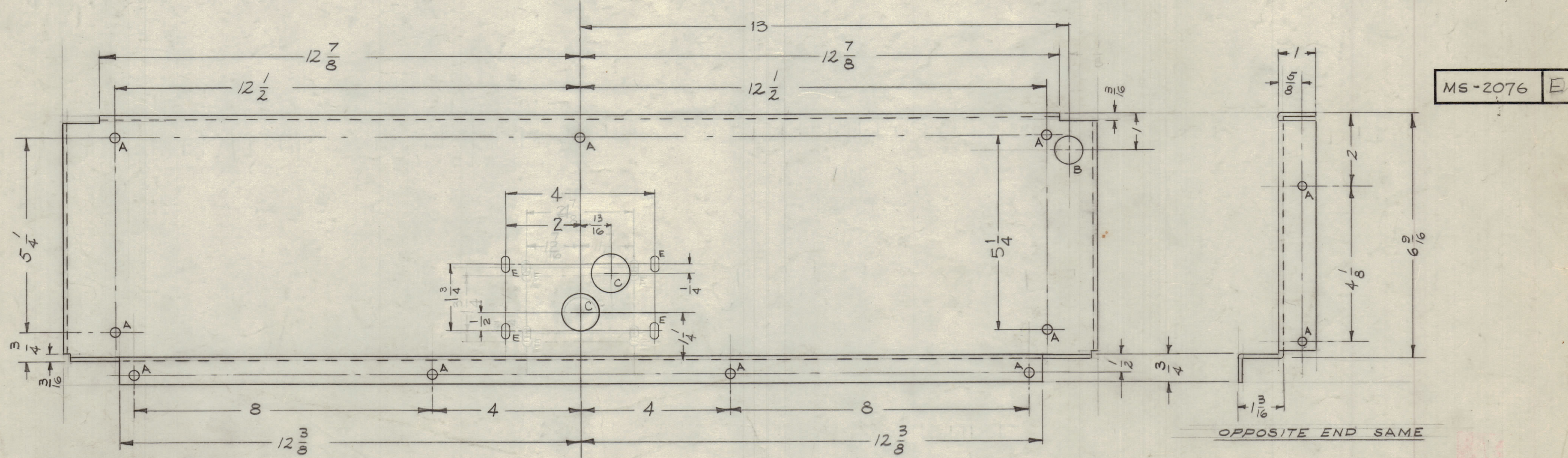
MAXIMUM ALLOWABLE TOLERANCES HAVE BEEN DETERMINED AND DEVIATIONS WILL BE CAUSE FOR REJECTION. REMOVE ALL BURRS AND SHARP EDGES.

HOLES REQ.

- A - 15/64 (.234) D. — 13
- B - 3/4 (.75) D. — 1
- C - 1 (1.000) D. — 2



TMC PART NO	DESCRIPTION
MS 2076	AS SHOWN
MS 2076-2	DELE. "B" & "C" HOLES



ISSUE	ITEM	CHANGED FROM	DATE	CH. NO.	DRAFTS	CHECKER	ENG. APP.
E		GPT-40KEL #MS20762 ADDED	11-10-67	18590	HEJ		FB
D	1	(1) "C" HOLE ADDED	3-11-63	8471			
C	1	4 (D) HOLES 3/8 DIA. WITH (2) 3-48 DRILL & C'SINK HOLES DELETED	12-8-61	6006	I.L.		
B	1	"E" SLOT WAS 7/32 D. HOLE	8-3-60	2680	MS		
A	4	2" WAS 1 1/16" 4" WAS 2 7/8					
A	3	FOUR "E" HOLES ADDED	3-14-60				16
A	2	FOUR "A" HOLES DELETED					
A	1	1/2 D. WAS 3/4 1" C WAS 7/8					

NOTE ~ ALL BEND RADII 1/8".

REQ. PER UNIT	MODEL	PROJECT NO.	ASSY. NO.	DATE
1	GPT-40KEL	GPT-40KEL		
1		AT-103		12-8-61
1	GPT-40K	AT-101		3-1-60

REQ. ITEM	PART NO.	DESCRIPTION	SYMBOL
	V8 TH'K	THE TECHNICAL MATERIEL CORP. MAMARONECK, NEW YORK	
	ALUMINUM	PLATE, FRONT	
	5052-H32	ANT - TUNER	
		1021110	
		HEAT TREAT. SPEC.	
		5404 YEL. IRIDITE	
		FINISH & SPEC. NO.	