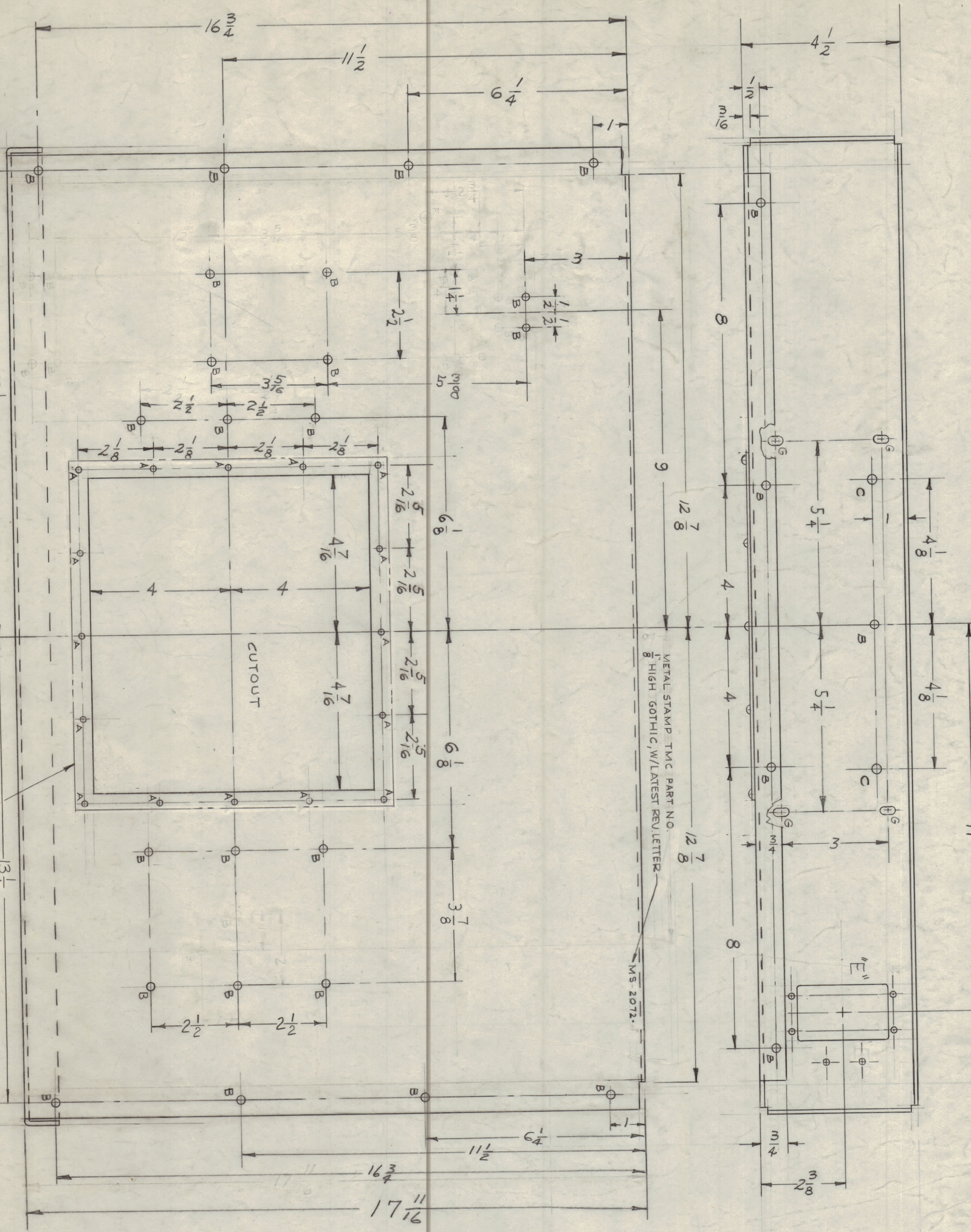
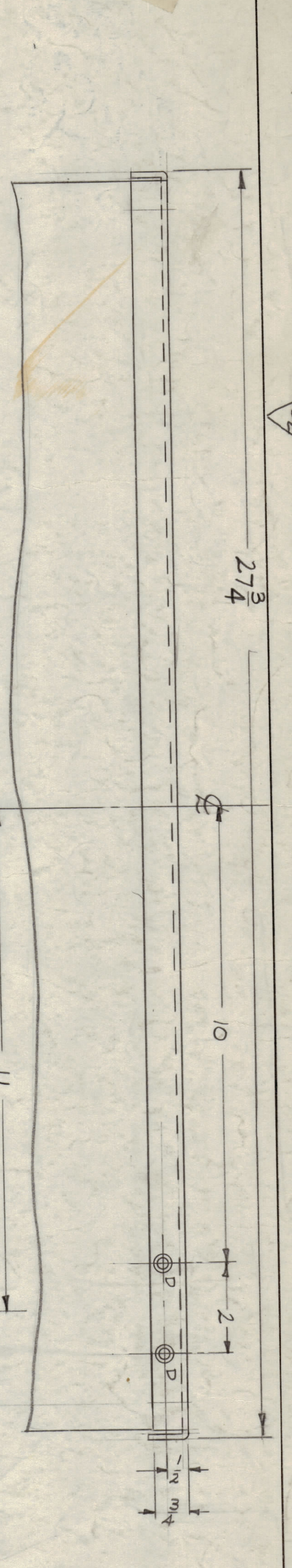
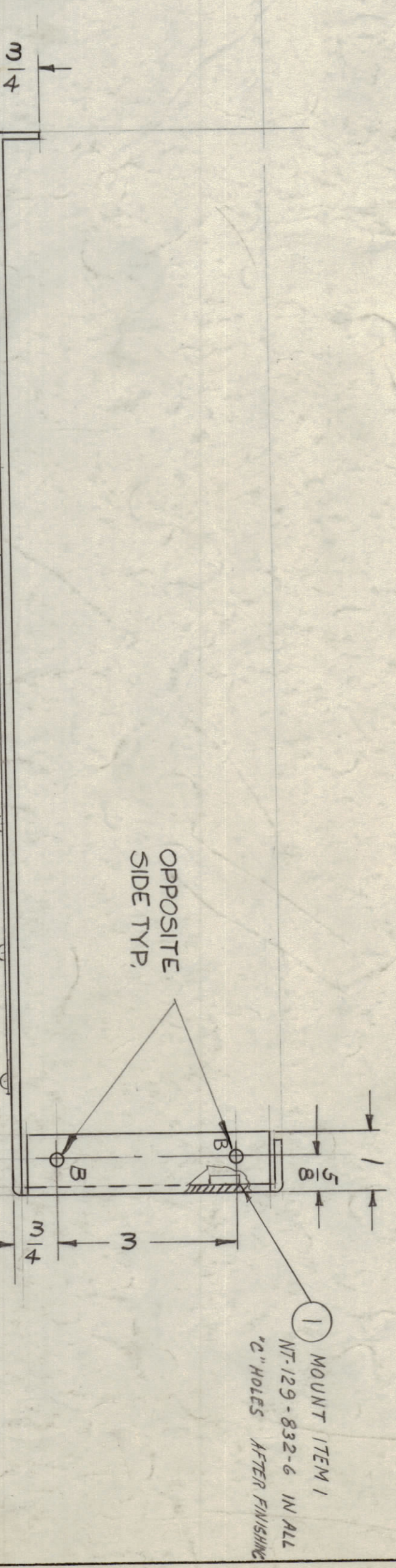


NOTE TO PERSONS RECEIVING THIS DRAWING  
THE TECHNICAL MATERIAL CORPORATION  
This drawing is issued in confidence for engineering information only and may not be reproduced or used to manufacture anything shown herein. Without permission from THE TECHNICAL MATERIAL CORPORATION, the user of this drawing is liable for malpractice and is subject to recall at any time.  
Property of:  
THE TECHNICAL MATERIAL CORPORATION  
AMARCONEC, NEW YORK

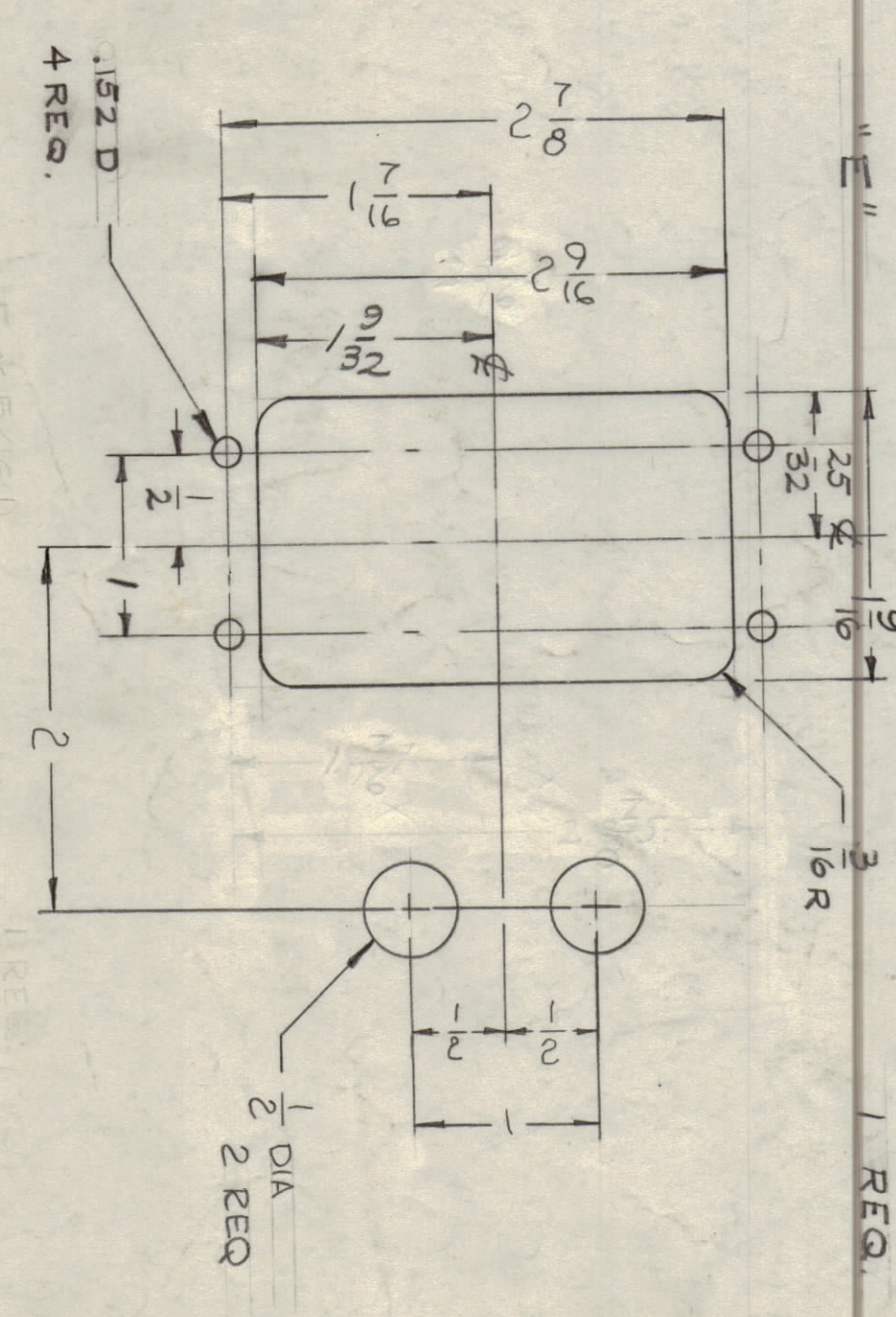


NOTE:  
USE MATERIAL THICKNESS FOR MAX. RADIUS ON  
ALL BENDS UNLESS OTHERWISE SPECIFIED.

| ITEM | REV.   | DESCRIPTION               | DATE     |
|------|--------|---------------------------|----------|
| L    | LD     | REF. ADDED                | 2-20-51  |
| K    | 2 1/2" | HOLE ADP. 7" DETAIL       | 6-20-51  |
| J    | 1"     | HOLE ADDED                | 8-14-51  |
| I    | 1"     | HOLE DELETED              | 8-14-51  |
| H    | 2 1/2" | HOLE DELETED              | 8-14-51  |
| G    | 2 1/2" | HOLE DELETED              | 8-14-51  |
| F    | 1"     | G. SLOTS WERE 4" B. HOLES | 10-11-51 |
| E    | 1"     | W. HOLES RELOCATED        | 10-11-51 |
| D    | 1"     | W. HOLES ADDED            | 10-11-51 |
| C    | 1"     | ADDED 4" W. HOLES         | 4-20-51  |
| B    | 2 3/4" | WAS 3 3/4"                | 3-15-51  |
| A    | 3 3/4" | WAS 2 3/8"                | 3-15-51  |
| 1    | 1"     | HOLE RELOCATED            | 5-11-51  |



- A - 1/8" (.125) D.
- B - 7/32" (.21875) D.
- C - .221 - .224 FOR NT-129-832-6
- D



| REV. | DESCRIPTION | DATE   |
|------|-------------|--------|
| 1    | GPT-40K     | AT-101 |
| 2    | 3-2-50      | 5-2-50 |
| 3    | 5-2-50      | 5-2-50 |

| REV. | DESCRIPTION  | DATE |
|------|--------------|------|
| 1    | MS-2072      | L    |
| 2    | NT-129-832-6 | A    |
| 3    | NT-129-832-6 | C    |

REF: LD2195

| REV. | DESCRIPTION         | DATE    |
|------|---------------------|---------|
| 1    | ALUMINUM            | MS-2072 |
| 2    | CHASSIS, ANT. TUNER | MS-2072 |

MS-2072 L