

IF IT IS FOUND DESIRABLE TO CHANGE ANY TOLERANCE OR OTHER DETAIL SPECIFIED ON THIS DRAWING NOTIFY THE PURCHASER PROMPTLY.

MAXIMUM ALLOWABLE TOLERANCES HAVE BEEN DETERMINED AND DEVIATIONS WILL BE CAUSE FOR REJECTION. REMOVE ALL BURRS AND SHARP EDGES.

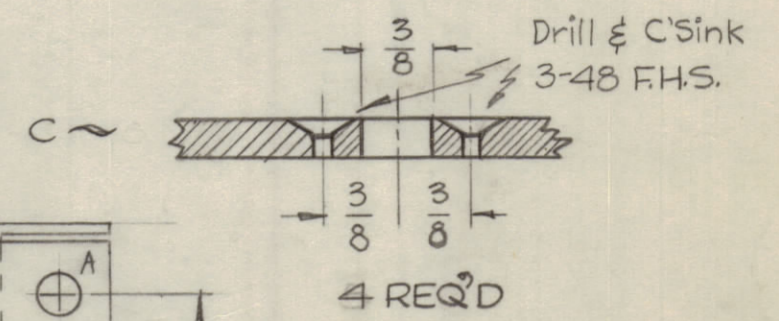
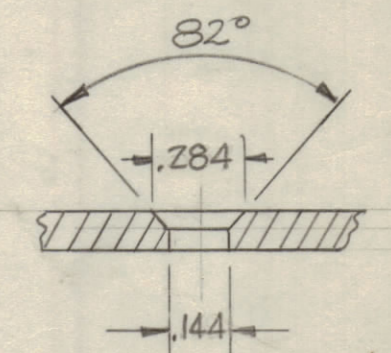
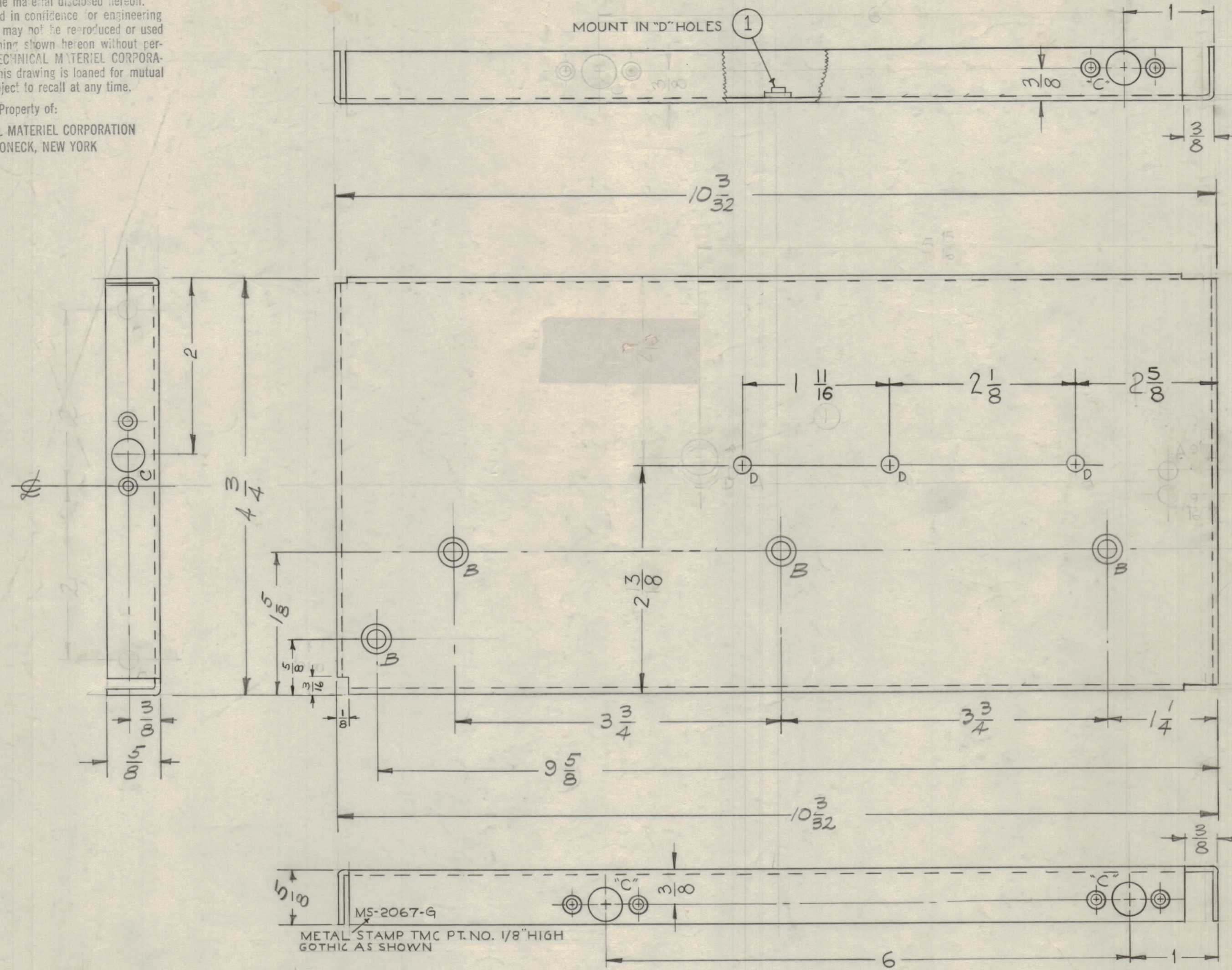
**NOTICE TO PERSONS RECEIVING THIS DRAWING**

THE TECHNICAL MATERIEL CORPORATION claims proprietary right in the material disclosed hereon. This drawing is issued in confidence or engineering information only and may not be reproduced or used to manufacture anything shown hereon without permission from THE TECHNICAL MATERIEL CORPORATION to the user. This drawing is loaned for mutual assistance and is subject to recall at any time.

Property of:  
THE TECHNICAL MATERIEL CORPORATION  
MAMARONECK, NEW YORK

A - 13/64 DIA. 2 REQ'D

B - DRILL & C'SINK FOR 6-32 4 REQ'D



D - .277 DIA. (FOR ITEM 1) 3 REQ'D

MS-2067 G

USE MATERIAL THICKNESS FOR MAX. RADIUS ON ALL BENDS UNLESS OTHERWISE SPECIFIED

MOUNT INSERTS AFTER FINISHING

ISSUE	ITEM	CHANGED FROM	DATE	CH. NO.	DRAFTS	CHECKER	ENG. APP.
G	1	(3) 'D' HOLES WERE .268/.271 DIA	2-14-63	8291			
F	2	ITEM (1) WAS NT-136-1032-4	9-11-62	7331			
E	1	NOTCH ADDED (LEFT SIDE BOTTOM)	9/14/61	5501	JA	AB	
	2	'D' HOLES WERE 7/32 D.					
D	1	2 5/8 DIM. WAS 1 5/8	2-14-61	4124	RU	JCB	
	2	ITEM (1) ADDED					
C	1	'D' Hole .413 D Deleted, Changed to 'A' Hole	10-26-60	3299	J.C.B.		
	2	'A' Hole Relocated 'D' Hole Added					
B	1	'A' Holes were 7/32 DIA.	8/16/60	H	JBM		
	2	'B' Holes were Drn C'sk 8-32					
A	1	3/8 Notch added	3-28-60	1949	MFB		
	2	ONE 'C' DETAIL DELETED					
		2 7/32 WAS 2 17/32					
		2 3/8 WAS 2 11/16					

UNLESS OTHERWISE SPECIFIED DIMENSIONS ARE IN INCHES AND INCLUDE CHEMICALLY APPLIED OR PLATED FINISHES

**TOLERANCES**

DECIMALS  
.X ± .05  
.XX ± .01  
.XXX ± .005

FRACTIONS  
± 1/64  
ANGLES  
± 0° 30'

CUT HERE GUARANTEED 2-146

REQ. PER UNIT	MODEL	PROJECT NO.	ASSY. NO.	DATE
	1 CHL-1			2-18-60
				2-9-60
				2-9-60

REQ. ITEM	PART NO.	DESCRIPTION	SYMBOL
3	1	NT-129-1224-4 NUT, SWAGE, SELF LOCKING	D
.064 THK.		THE TECHNICAL MATERIEL CORP. MAMARONECK, NEW YORK	
ALUMINUM		LEFT, SIDE PLATE	
5052-H 32		Torillo	
TYPE & TEMPER		DRAWN	ELEC. DES. APP. MECH. DES. APP.
HEAT TREAT. SPEC.		CHECKED	FINAL APPROVAL
FINISH & SPEC. NO.		MS-2067 G	