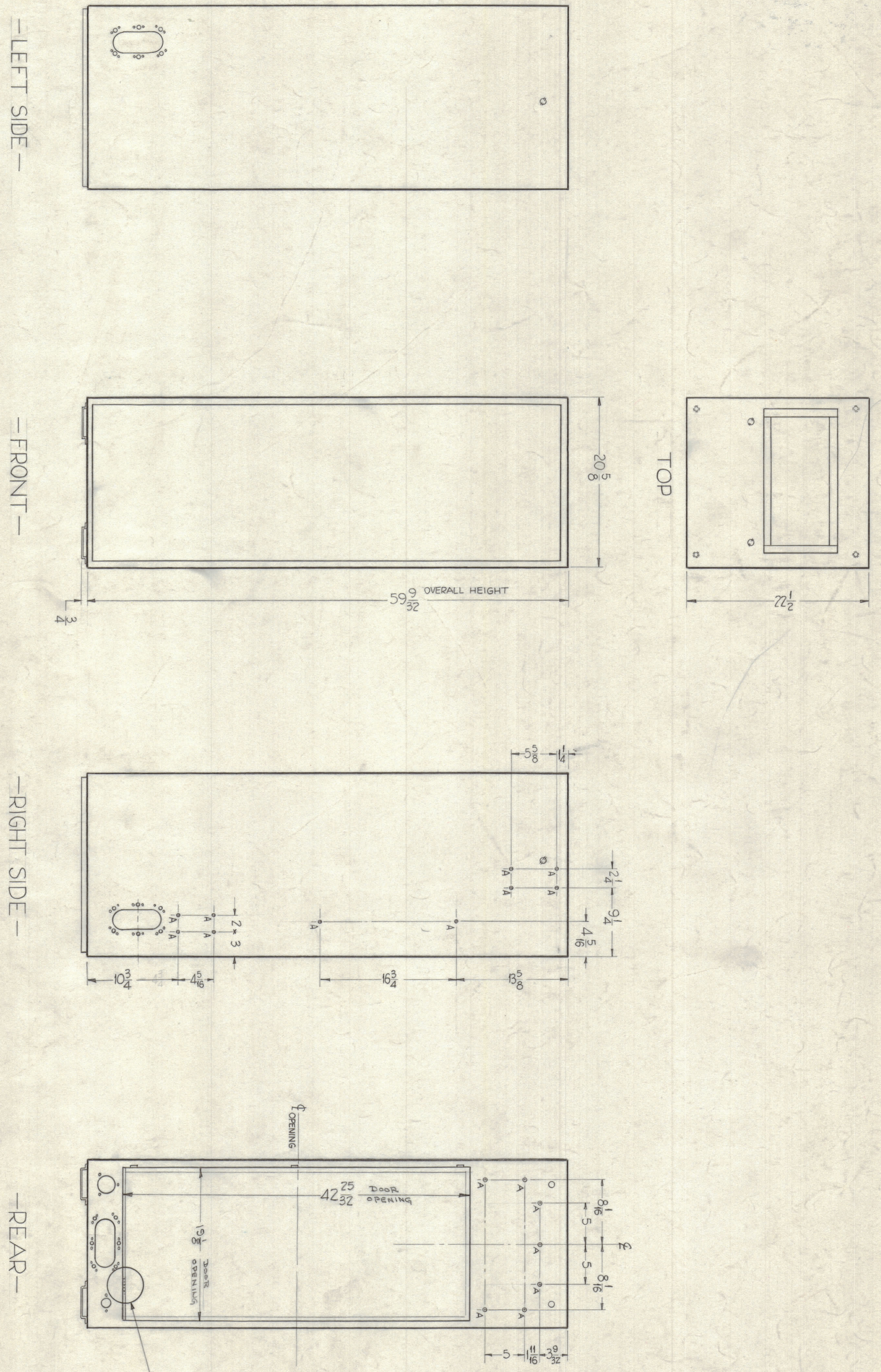
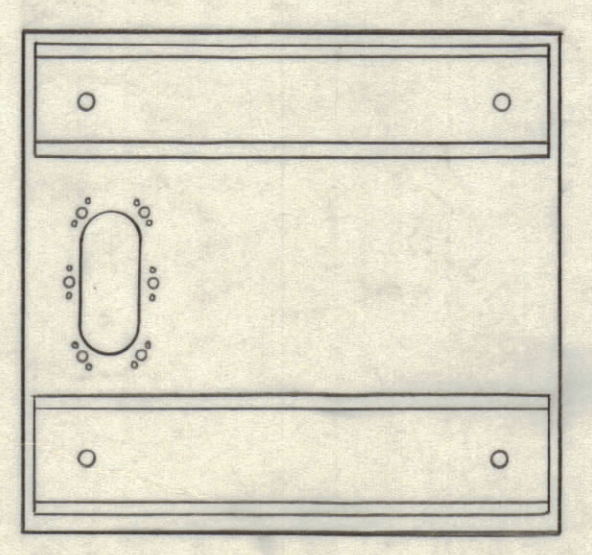
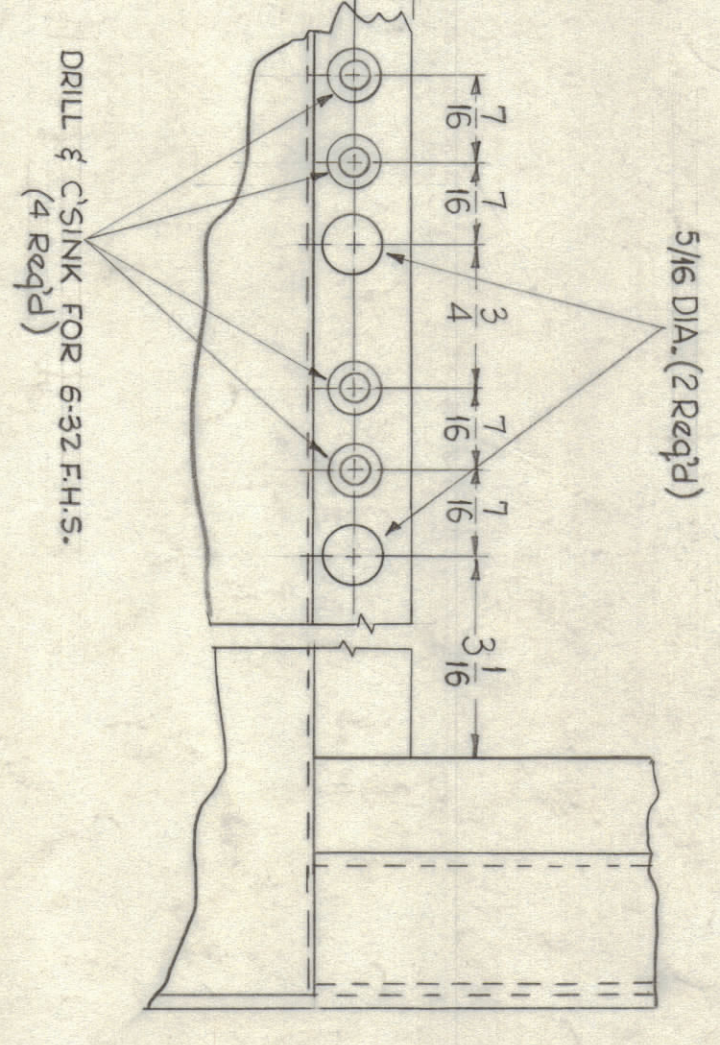


NOTICE TO PERSONS RECEIVING THIS DRAWING  
 THE TECHNICAL MATERIAL CORPORATION claims proprietary right in the material disclosed herein. This drawing is issued in confidence for engineering information only and may not be reproduced or used to manufacture anything shown hereon without permission from THE TECHNICAL MATERIAL CORPORATION to the user. This drawing is loaned for mutual assistance and is subject to recall at any time.  
 Property of:  
 THE TECHNICAL MATERIAL CORPORATION  
 MAMARONICK, NEW YORK



HOLES  
 A-1/8" DIA. (ECS)  
 REQ'D  
 17



—BOTTOM—

—FRONT—

—RIGHT SIDE—

—REAR—

—LEFT SIDE—

DEL. REF. LD 633	8/24/67	C.C.	H.G.		
Revised Bottom from 8 Sheets	11/27/61	4013	D.J.M.		
DATE	CH. NO.	SHEETS	CHECKED	ENG. APP.	
SCALE					

UNLESS OTHERWISE SPECIFIED:  
 DIMENSIONS ARE IN INCHES  
 TOLERANCES ON  
 FRACTIONS ± 1/64    DECIMALS ± .005    ANGLES ± 1/2°

MAXIMUM ALLOWABLE TOLERANCES HAVE BEEN DETERMINED AND ANY DEVIATIONS FROM THESE TOLERANCES SHALL REMOVE ALL STRESS & SHARP EDGES

REQ. ITEM	PART NO.	DESCRIPTION	SYMBOL
1	RAK-17	THE TECHNICAL MATERIAL CORP. MAMARONICK, NEW YORK	
1	RAK-17	MODIFICATIONS FOR RAK-17 MODEL MS-2503-1 MS-5 (REV'D)	
1	RAK-17	FINISH & TEMPER	
1	RAK-17	HEAT TREAT SPEC.	
1	RAK-17	DRAWN	
1	RAK-17	CHECKED	
1	RAK-17	FINAL APPROVAL	
1	RAK-17	ELEC. DES. APP.	
1	RAK-17	MECH. DES. APP.	
1	RAK-17	SHEET	

REF. LD-955 (Lettering Rear View Bottom)  
 REF. MS-2517 (Rear Door)  
 REF. MS-2503-1 (Rack, Basic) 5 Sheets.

MS-2055

TMC FORM NO. 111    11    10    9    8    7    6    5    4    3    2    1