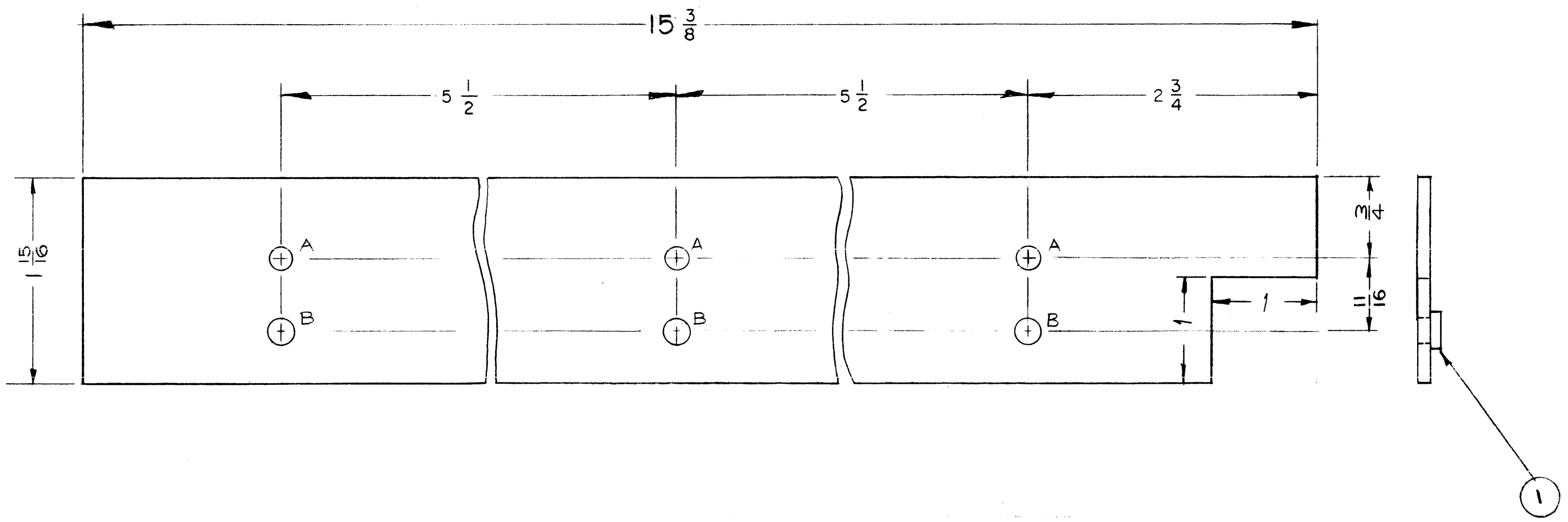


A - $\frac{13}{64}$ DIA. 3 REQ.
 B - $\frac{221}{224}$ DIA. 3 REQ.



NOTICE TO PERSONS RECEIVING THIS DRAWING

THE TECHNICAL MATERIEL CORPORATION claims proprietary right in the material disclosed hereon. This drawing is issued in confidence for engineering information only and may not be reproduced or used to manufacture anything shown hereon without permission from THE TECHNICAL MATERIEL CORPORATION to the user. This drawing is loaned for mutual assistance and is subject to recall at any time.

Property of:
 THE TECHNICAL MATERIEL CORPORATION
 MAMARONECK, NEW YORK

ISSUE	ITEM	CHANGED FROM	DATE	CH. NO.	DRAFTS	CHECKER	ENG. APP.
B	1	1"X1" NOTCH Added	10/18/60	3215	RW	JCB	[Signature]
A	3	3/4" LIP DELETED	8	20000	Cy	JCB	[Signature]
	2	3/4 DIM. WAS 15/16 DIM.	3				
	1	1-15/16 DIM. WAS 2-1/8	60				

TOLERANCES		SCALE: \pm
DEC. DIM. \pm	MAXIMUM ALLOWABLE TOLERANCES HAVE BEEN DETERMINED AND ANY DEVIATIONS WILL BE CAUSE FOR REJECTION.	
FRAC. DIM. \pm	REMOVE ALL BURRS AND SHARP EDGES	
ANGULAR DIM. \pm 1/64		

1	GPT-40K	AX-211		2-12-60
REQ. PER UNIT	MODEL	PROJECT NO.	ASS'Y. NO.	DATE
USED ON				

3	1	NT-129-832-6	SWAGE, NUT, ROUND TYPE		
REQ. ITEM	PART NO.		DESCRIPTION		SYMBOL
1/8 THICK			THE TECHNICAL MATERIEL CORP.		
STOCK SIZE			MAMARONECK, NEW YORK		
ALUMINUM			RIGHT SIDE		
MATERIAL			BRACKET, SHIELD		
5052-H32			Cy		[Signature]
TYPE & TEMPER	HEAT TREAT. SPEC.	DRAWN	CHECKED	FINAL APPROVAL	
S 404 YELLOW IRIDITE			[Signature]	MS-2049 B	
FINISH & SPEC. NO.		ELEC. DES. APP.	MECH. DES. APP.		