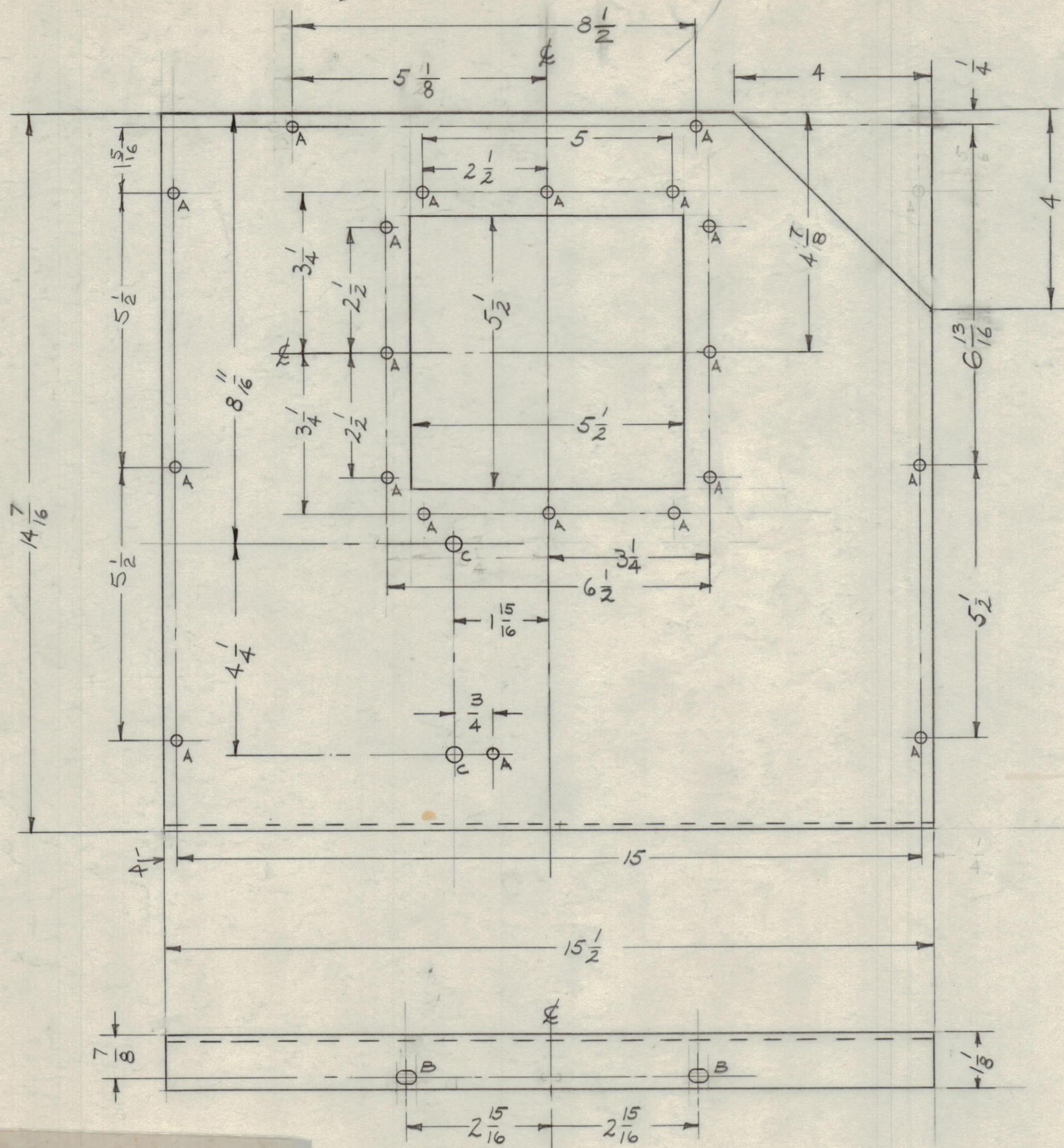


IF IT IS FOUND DESIRABLE TO CHANGE ANY TOLERANCE OR OTHER DETAIL SPECIFIED ON THIS DRAWING NOTIFY THE PURCHASER PROMPTLY.

MAXIMUM ALLOWABLE TOLERANCES HAVE BEEN DETERMINED AND DEVIATIONS WILL BE CAUSE FOR REJECTION. REMOVE ALL BURRS AND SHARP EDGES.



A - 13/64 (.203) DIA. 20 REQ.
 B - 1/4 x 3/8 SLOTS 2 "
 C - 5/16 (.312) D. 2 "

MS-2046 C

1/8 RADIUS BENDS

UNLESS OTHERWISE SPECIFIED DIMENSIONS ARE IN INCHES AND INCLUDE CHEMICALLY APPLIED OR PLATED FINISHES	
DECIMALS	FRACTIONS
.X ± .05	± 1/64
.XX ± .01	ANGLES ± 0° 30'
.XXX ± .005	

NOTICE TO PERSONS RECEIVING THIS DRAWING

THE TECHNICAL MATERIEL CORPORATION claims proprietary right in the material disclosed hereon. This drawing is issued in confidence or engineering information only and may not be re-used or used to manufacture anything shown hereon without permission from THE TECHNICAL MATERIEL CORPORATION to the user. This drawing is loaned for mutual assistance and is subject to recall at anytime.

Property of:
 THE TECHNICAL MATERIEL CORPORATION
 MAMARONECK, NEW YORK

ISSUE	ITEM	CHANGED FROM	DATE	CH. NO.	DRAFTS	CHECKER	ENG. APP.
C	1	DIM 4 7/8 WAS 4 15/16	10/18/60	3214	PL	JCB	JCB
B		4 15/16 WAS 4 13/16 ADDED 2 1/2" HOLES	4.4	1972	PL	JCB	JCB
A	3	5/8 WAS 5/2	3/21/60			MT	JCB
	2	ANGULAR CUTOUT ADDED					
	1	ONE "A" HOLE DELETED					

REQ. ITEM	PART NO.	DESCRIPTION	SYMBOL
	1/8 TH'K.	THE TECHNICAL MATERIEL CORP. MAMARONECK, NEW YORK	
STOCK SIZE			
ALUMINUM		SHIELD LEFT SIDE	
MATERIAL	WEIGHT PER PC.	ANTENNA TUNER	
5052 - H32			
TYPE & TEMPER			
		DRAWN	ELEC. DES. APP. MECH. DES. APP.
		NO	JCB
HEAT TREAT. SPEC.		CHECKED	FINAL APPROVAL
S404 - YEL. IRIDITE			
FINISH & SPEC. NO.			MS-2046 C

REQ. PER UNIT	MODEL	PROJECT NO.	ASSY. NO.	DATE
1	GPT-40K	AT-103		2-17-60