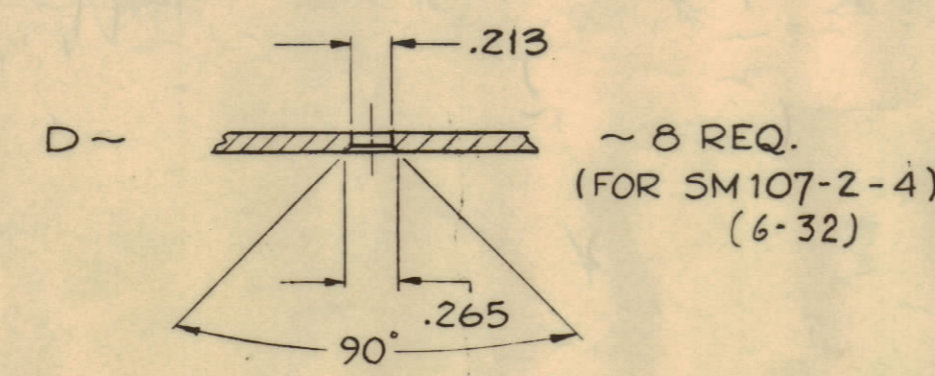
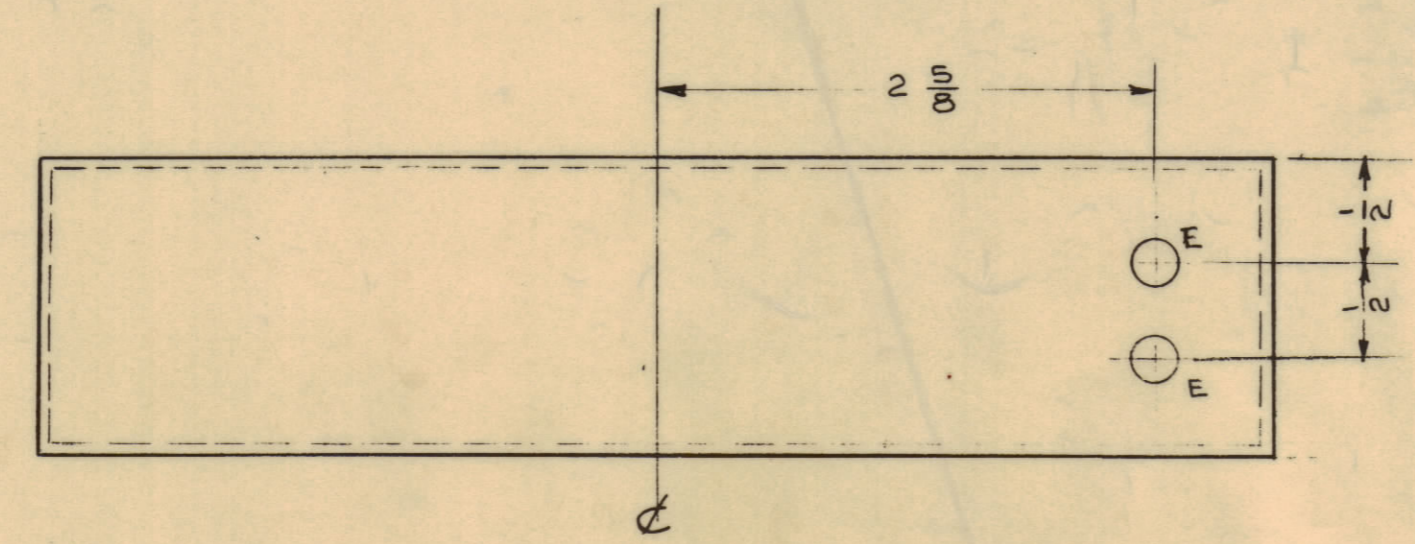
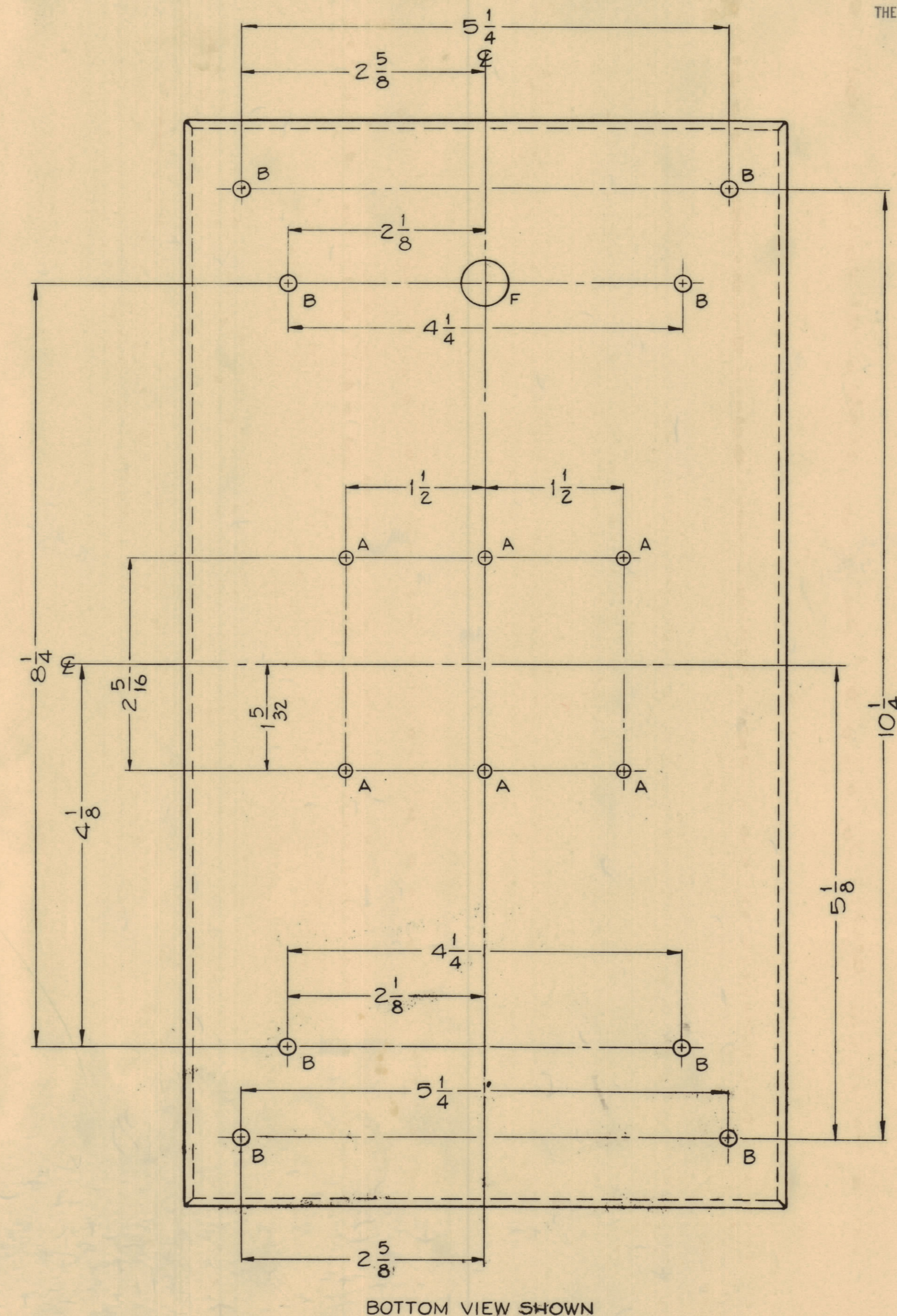
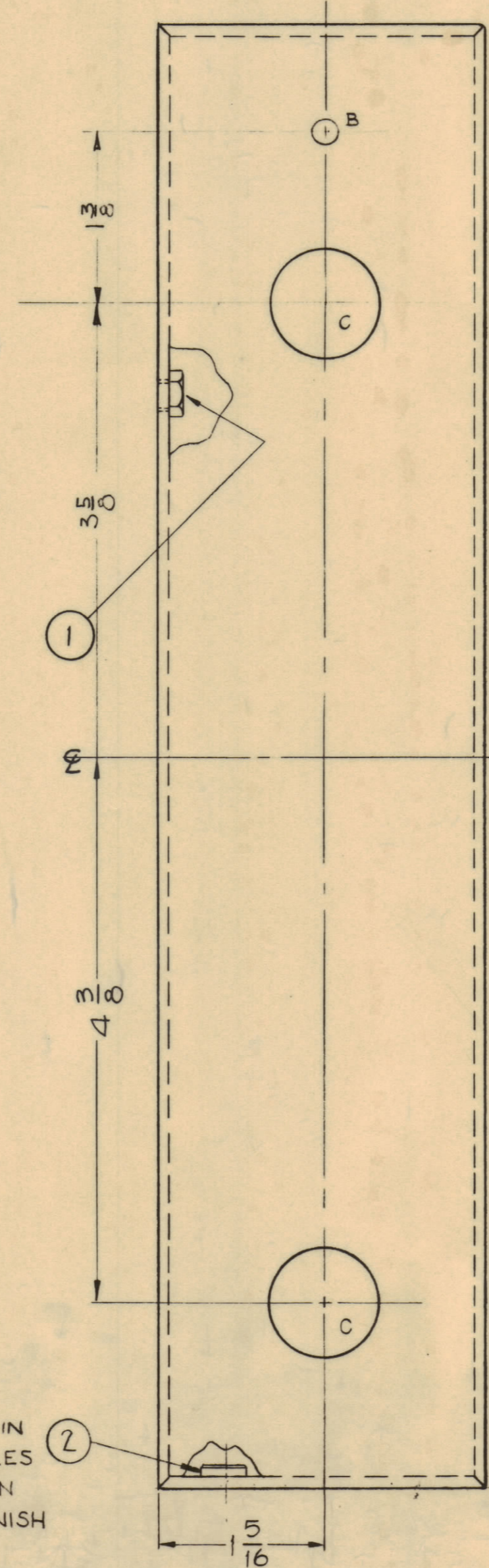
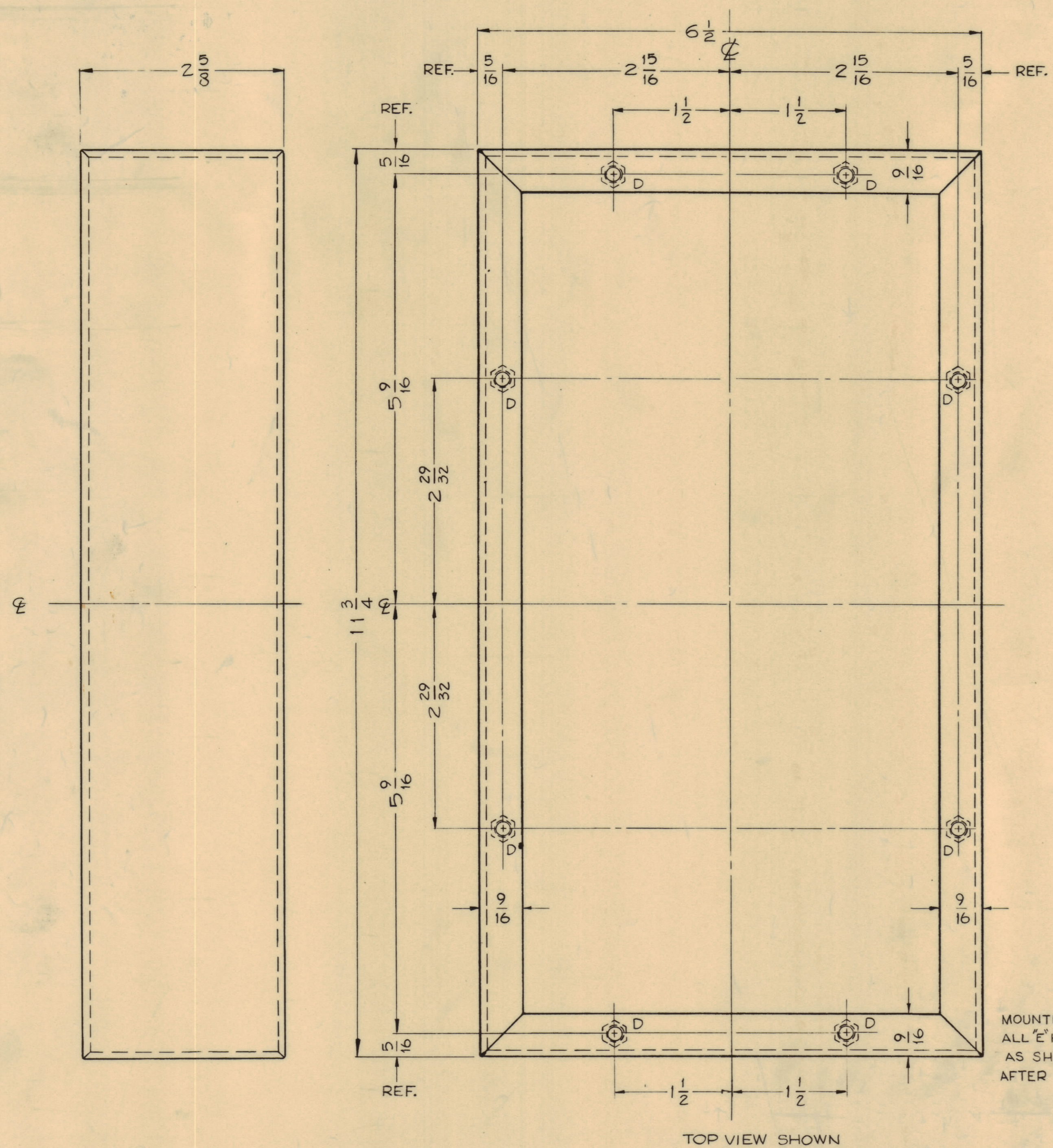


NOTICE TO PERSONS RECEIVING THIS DRAWING

THE TECHNICAL MATERIEL CORPORATION claims proprietary right in the material disclosed herein. This drawing is issued in confidence for engineering information only and may not be reproduced or used to manufacture anything shown herein without permission from THE TECHNICAL MATERIEL CORPORATION to the user. This drawing is loaned for mutual assistance and is subject to recall at any time.

Property of:
THE TECHNICAL MATERIEL CORPORATION
MAMARONECK, NEW YORK



- HOLES ~
- A ~ 11/64 (.171) DIA. 6 REQ.
 - B ~ 13/64 (.203) DIA. 9 REQ.
 - C ~ 7/8 (.875) DIA. 2 REQ.
 - E ~ .221-.224 D (FOR NT-129-832-4) 2 REQ.
 - F ~ 1/2 DIA. HOLE

E	1	ITEM (D) ADDED TO BUILD UP PREVIOUSLY OMITTED IN ERROR	12-8-60	3668	RU	002	002
D	1	RELOCATE ONE "E" HOLE	9/30	3019	GD	002	002
C	1	RELOCATE TWO "E" HOLES	8-4-60	2692	CA	002	002
B	1	(1) "F" HOLE ADDED	6-29-60	2568	CA	002	002
A	3	(2) "E" HOLES ADDED	6-29-60	2568	CA	002	002
	1	ONE "R" HOLE ADDED	1/20/60	1944	MG	002	002
	2	"B" HOLES WERE 11/64					
	1	"A" HOLES WERE 9/64					

TOLERANCES: DEC. DIM. ± 1/64; ANGULAR DIM. ±

SCALE: FULL (DO NOT SCALE)

DRILL PUNCH COMMERCIAL STOCK SIZES AND MANUFACTURERS TOLERANCES ARE NOT INCLUDED.

1	AP 102	GPT 40K		2-24-60
REQ. PER UNIT	MODEL	PROJECT NO.	ASSY. NO.	DATE
				USED ON

2	2	NT-129-8324	NUT ROUND, SWAGE TYPE	
8	1	SM107-2-4	INSERT, HEXAGON	
.081		THE TECHNICAL MATERIEL CORP. MAMARONECK, NEW YORK		
ALUMINUM		BOX, P.A. TRANSFORMER		
5052 - H-32		FILTER		
TYPE & TEMPER		John C. Biele	EM	
HEAT TREAT SPEC.		FINAL APPROVAL		
5404 - IRIDITE		MS-2032 E		
FINISH & SPEC. NO.				

MS-2032 E