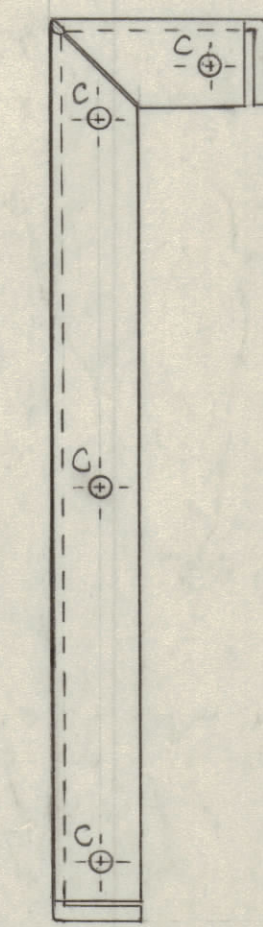
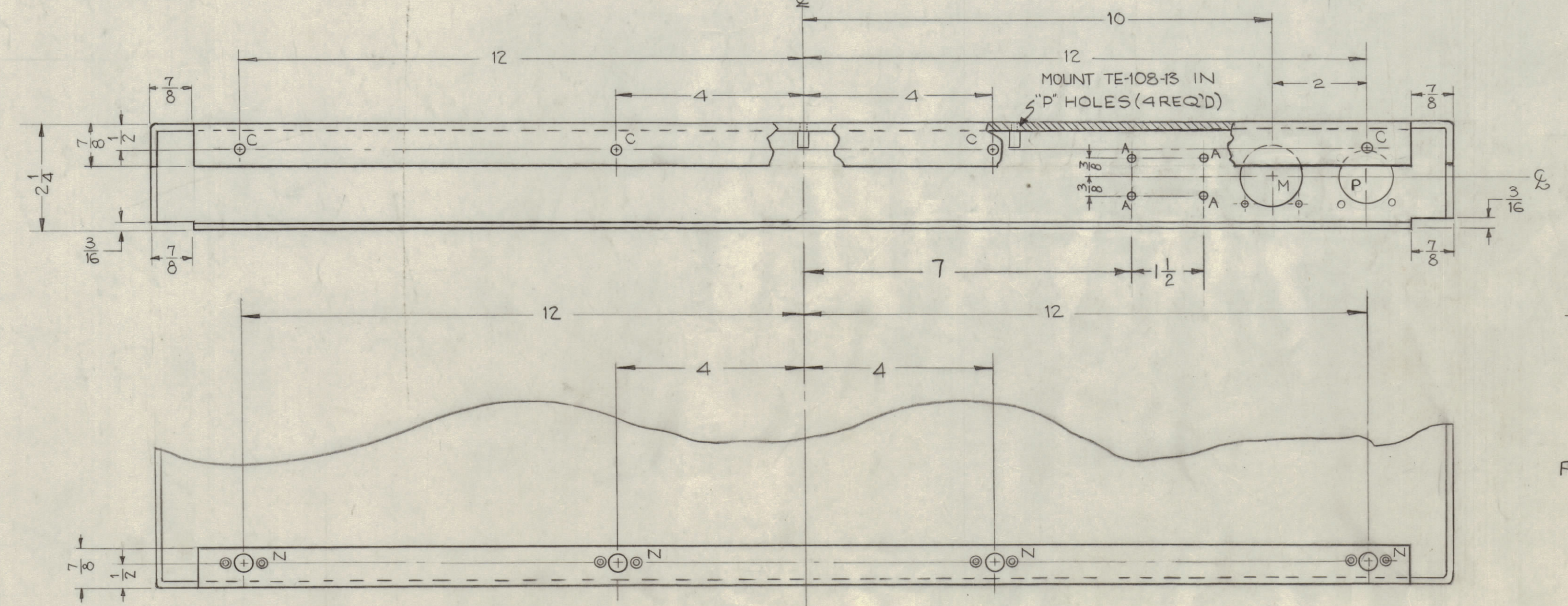
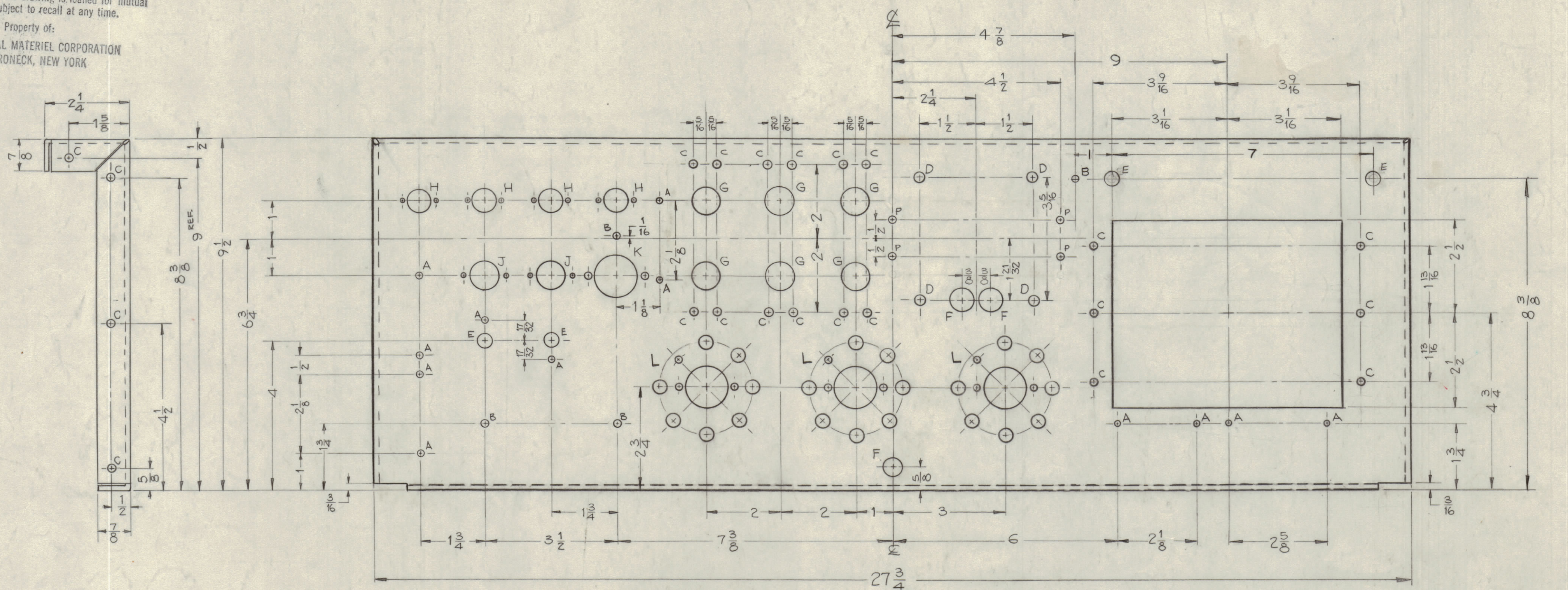


IF IT IS FOUND DESIRABLE TO CHANGE ANY TOLERANCE OR OTHER DETAIL SPECIFIED ON THIS DRAWING NOTIFY THE PURCHASER PROMPTLY.  
 MAXIMUM ALLOWABLE TOLERANCES HAVE BEEN DETERMINED AND DEVIATIONS WILL BE CAUSE FOR REJECTION. REMOVE ALL BURRS AND SHARP EDGES

**NOTICE TO PERSONS RECEIVING THIS DRAWING**

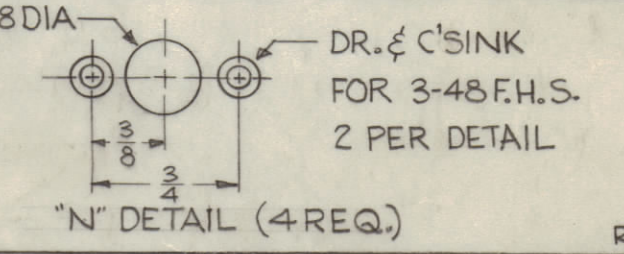
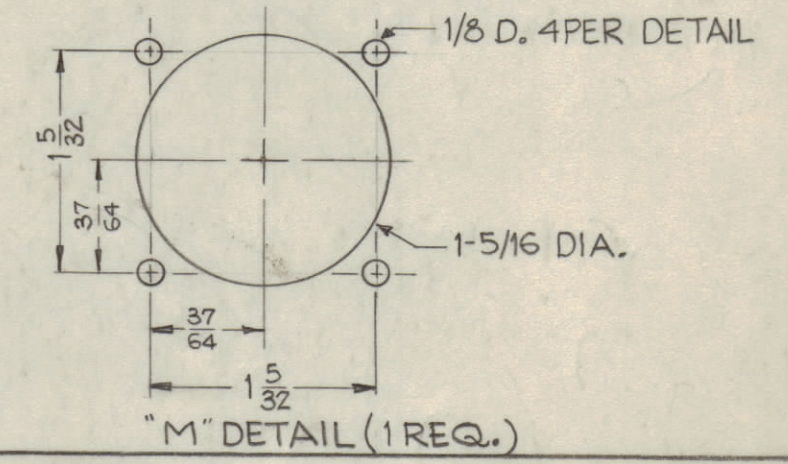
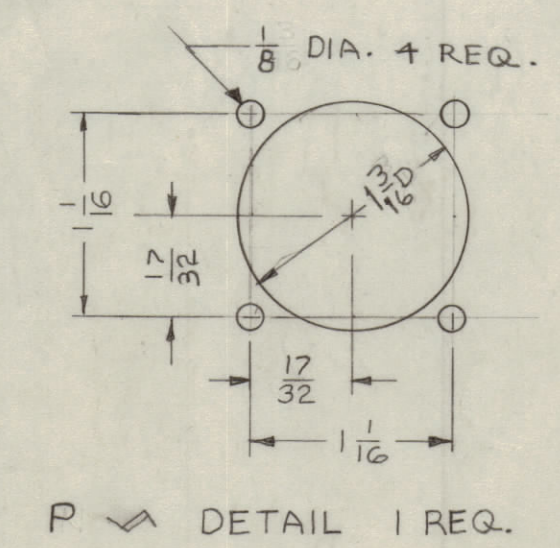
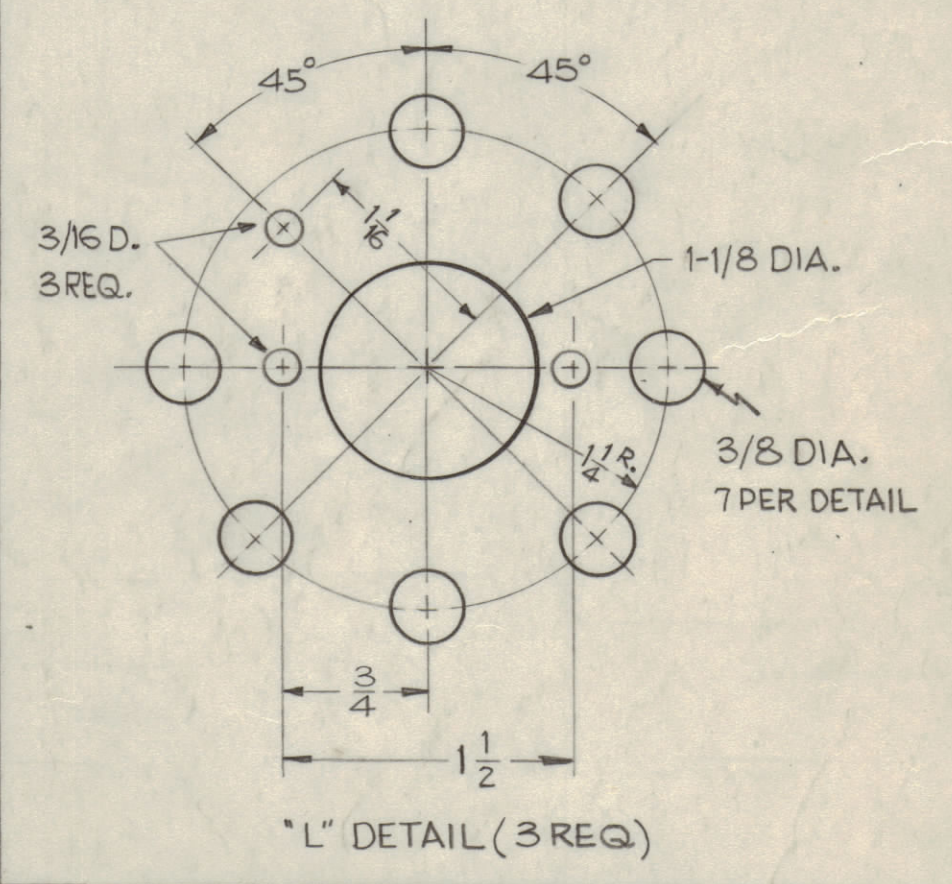
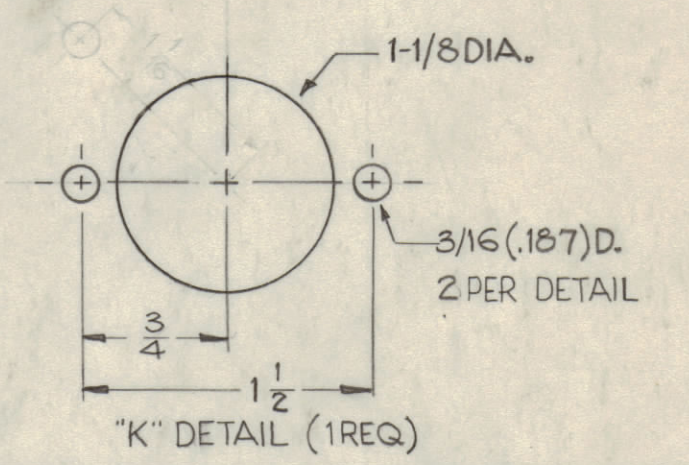
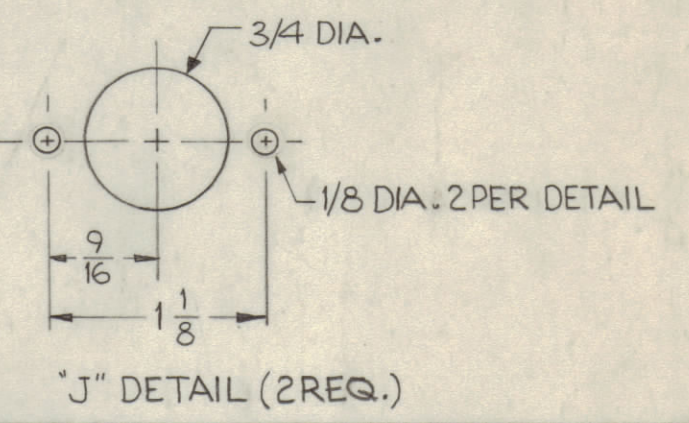
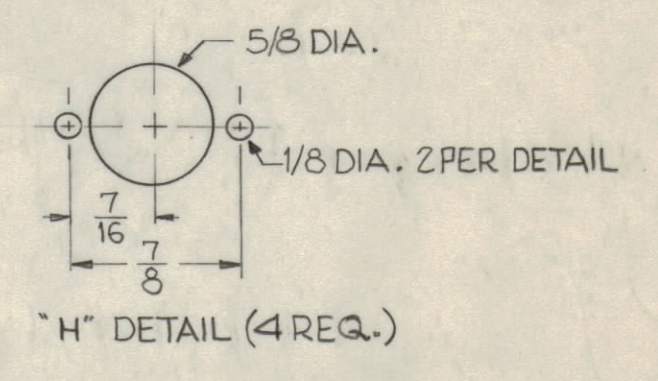
THE TECHNICAL MATERIEL CORPORATION claims proprietary right in the material disclosed herein. This drawing is issued in confidence for engineering information only and may not be reproduced or used to manufacture anything shown herein without permission from THE TECHNICAL MATERIEL CORPORATION to the user. This drawing is loaned for mutual assistance and is subject to recall at any time.

Property of:  
 THE TECHNICAL MATERIEL CORPORATION  
 MAMARONECK, NEW YORK



HOLES	REQ
A ~ 9/64 (.140) DIA.	16
B ~ 1/64 (.0156) "	4
C ~ 7/32 (.218) "	30
D ~ 9/32 (.281) "	4
E ~ 3/8 (.375) "	3
F ~ 5/8 (.625) "	4
G ~ 3/4 (.750) "	6
H ~ #2 Dr. (.187) "	1

For TE-108-13



Ref: BLD-686  
 Lettering

ISSUE	ITEM	CHANGED FROM	DATE	CH. NO	DRAFTS	CHECKER	ENGR. APP.
C	2	(1) "B" HOLE ADDED	4/5/60	2419	CY	JCB	WHL
	1	(2) "E" HOLES ADDED	4-21-60	2207	CY	WCB	WHL
B	1	"P" DETAIL ADDED	3-10-60				
A	1	FOUR "A" HOLES ADDED					

TOLERANCES FROM SCALE: 1/2

ALL DEC. DIM. ±	DRILL PUNCH COMMERCIAL STOCK
OTHERS FRAC. DIM. ± 1/64	SIZES AND MANUFACTURERS
	TOLERANCES ARE NOT INCLUDED.

AP-104	GPT-40K	1-19-60
REQ PER UNIT	MODEL PROJECT NO.	DATE
	USED ON	

4	1	TE-108-13	STANDOFF, RIVET TYPE
REQ. ITEM	PART NO.	DESCRIPTION	SYMBOL
		1/8 THK. STOCK SIZE	
		ALUMINUM	
		MATERIAL WEIGHT PER PC.	
		S052-H32	
		TYPE & TEMPER	
		HEAT TREAT. SPEC.	
		5-404 IRIDITE	
		FINISH & SPEC. NO.	

THE TECHNICAL MATERIEL CORP.  
 MAMARONECK, NEW YORK

CHASSIS, MAIN  
 (BIAS SUPPLY DRAWER)

DR. & C'SINK FOR 3-48 F.H.S. 2 PER DETAIL

REF: LD-686

MS-1972 C