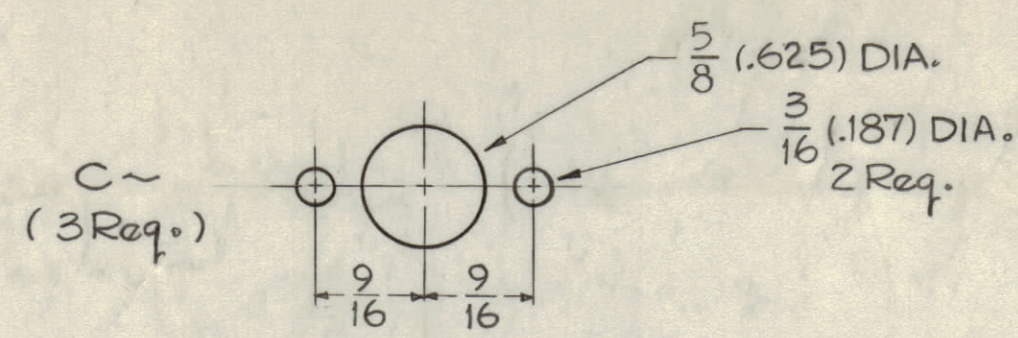


IF IT IS FOUND DESIRABLE TO CHANGE ANY TOLERANCE OR OTHER DETAIL SPECIFIED ON THIS DRAWING NOTIFY THE PURCHASER PROMPTLY.
 MAXIMUM ALLOWABLE TOLERANCES HAVE BEEN DETERMINED AND DEVIATIONS WILL BE CAUSE FOR REJECTION. REMOVE ALL BURRS AND SHARP EDGES.

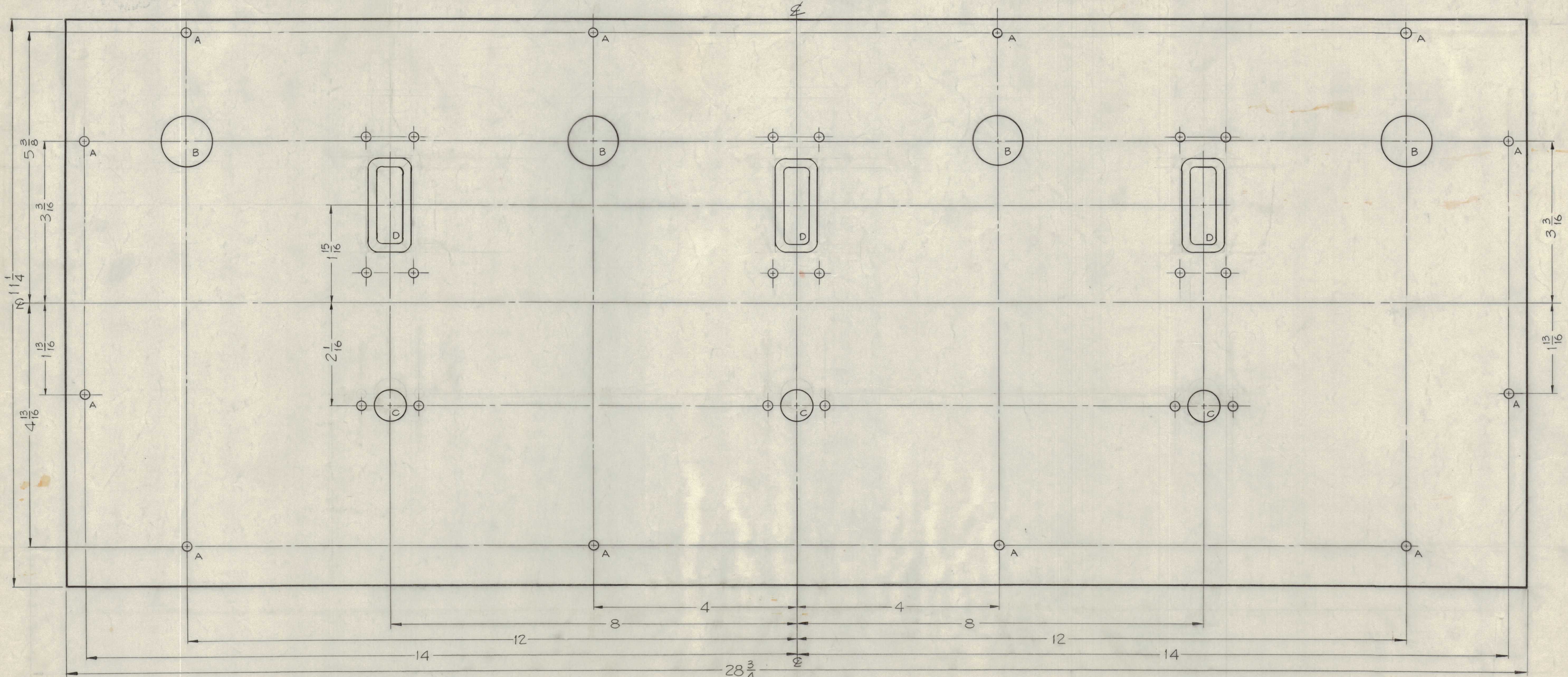
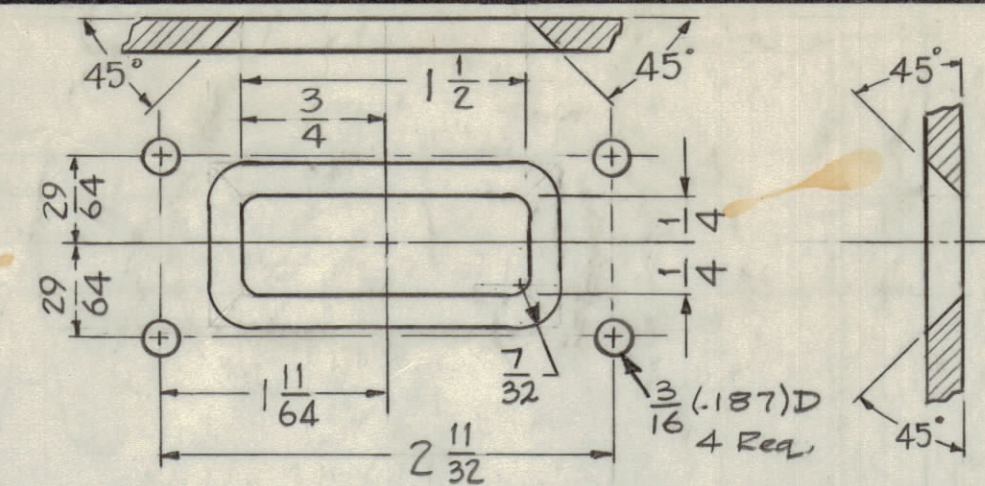
HOLES ~

A ~ 3/16 (1.187) DIA.
 B ~ 1" (1.000) DIA.

12 Req.
 4 Req.



D ~ (3 Req.)



FRONT VIEW OF PANEL

MACHINING ~

- 1 ~ LATERAL BOW OF PANEL MUST BE KEPT TO .031 TOLERANCE.
- 2 ~ MILL ALL EDGES.
- 3 ~ HOLES MUST BE DRILLED.
- 4 ~ PANEL MUST BE FREE OF ALL MACHINING MARKS, GOUGES & SCRATCHES. IF NECESSARY SAND FRONT OF PANEL WITH NO. 120 GRIT SANDPAPER.

FINISH ~

- S404 - YELLOW IRIDITE
- S114 - ZINC CHROMATE PRIMER. } FRONT & EDGES ONLY.
- S115 - TMC SMOOTH GRAY ENAMEL }

REF ~
 LD-676 (ENGRAVING, FRONT PANEL)
 LD-677 (LETTERING, FRONT PANEL, REAR)

ISSUE	ITEM	CHANGED FROM	DATE	CN. NO.	DRAFTS	CHECKER	ENG. APP.
A	1	C-HOLE DETAIL CLARIF.	4.14.64	11209	WJB	JPL	[Signature]
TOLERANCES		SCALE: FULL (DO NOT SCALE)					
ALL OTHERS	DEC. DIM. ±	DRILL PUNCH COMMERCIAL STOCK SIZES AND MANUFACTURERS TOLERANCES ARE NOT INCLUDED.					
	FRAC. DIM. ±						
	ANGULAR DIM. ±						

REQ. PER UNIT	MODEL	PROJECT NO.	ASSY. NO.	DATE
1	AX-275			1-18-60
1	AX-209			

REQ. ITEM	PART NO.	DESCRIPTION	SYMBOL
	3/16 THICK	ALUMINUM	
	2024 - T3		
		TYPE & TEMPER	
		HEAT TREAT. SPEC.	
		SEE NOTE	
		FINISH & SPEC. NO.	

MS-1954 A

MS-1954 A