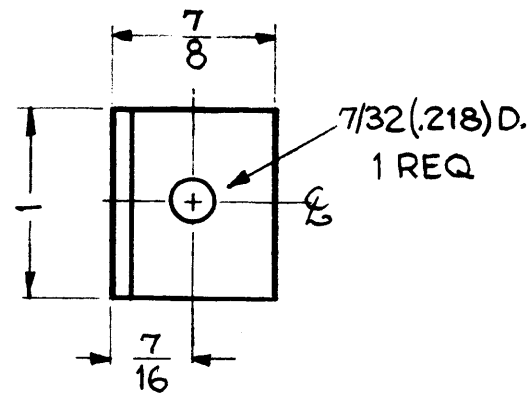


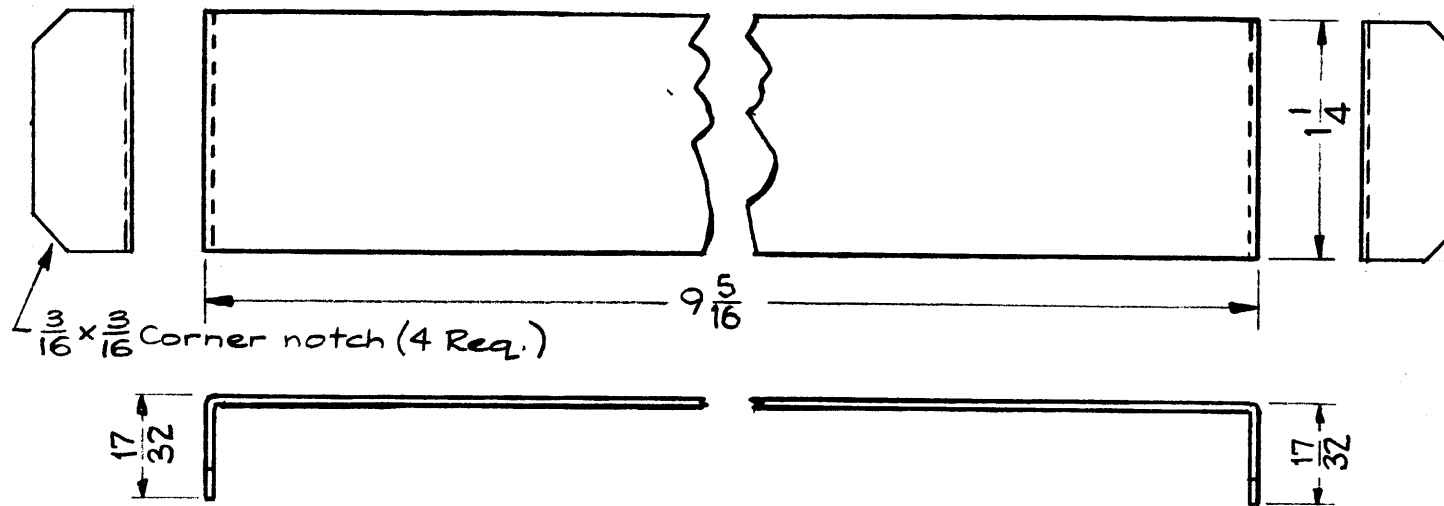
MS-1939



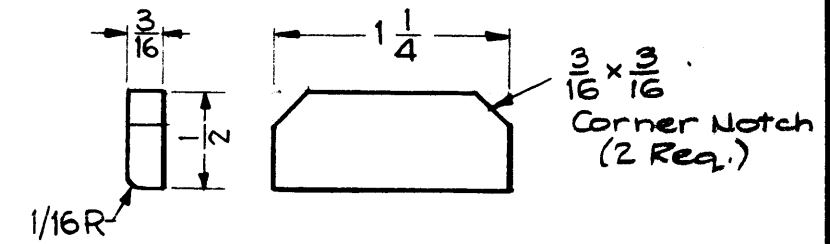
MATERIAL ~
.081 THK. BRASS,
HALF HARD

1 REQ. — MOUNTING BRACKET

MATERIAL - .040 THK. SOFT COPPER

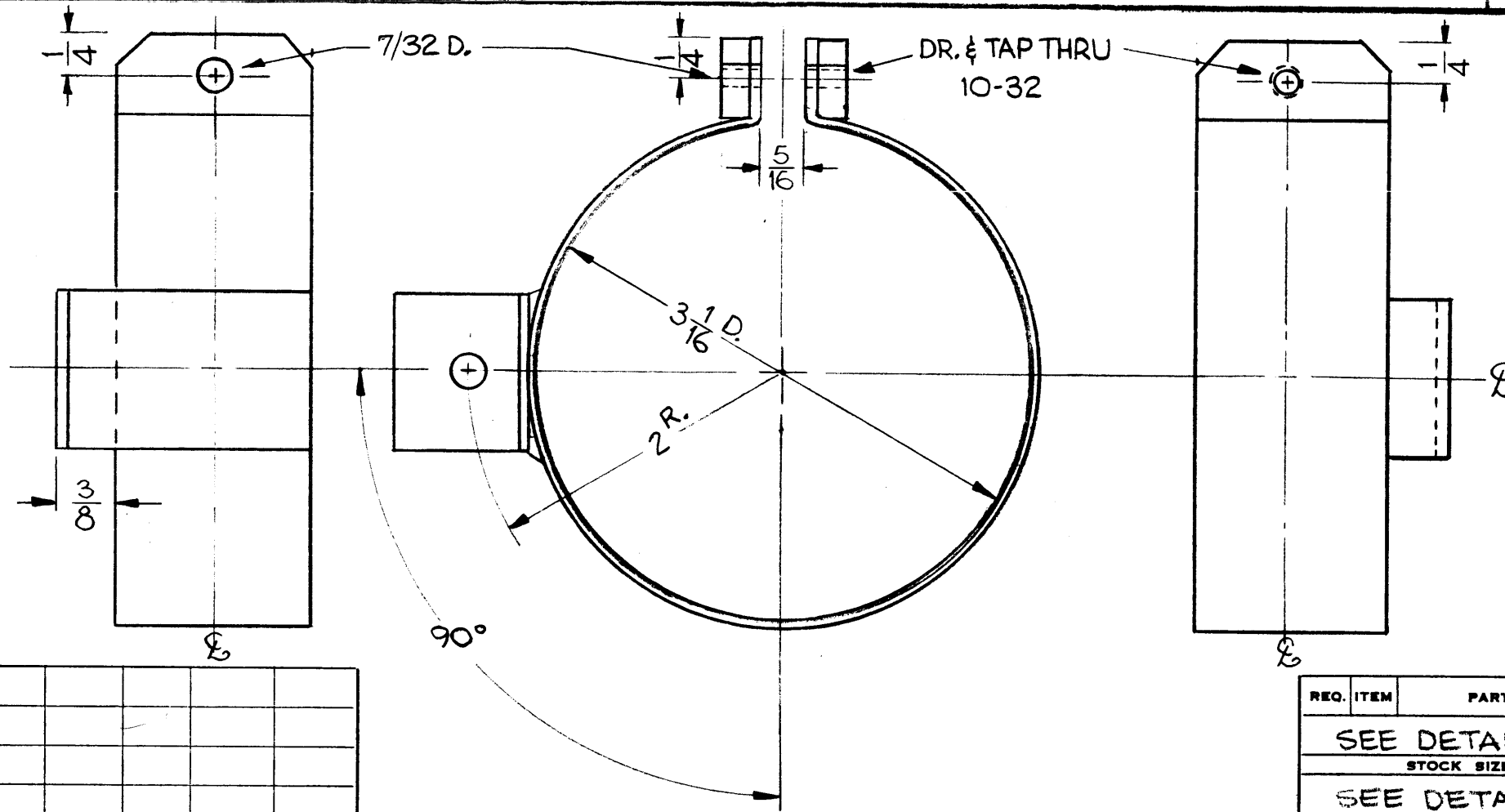


STRAP - 1 REQ.



MATERIAL - 3/16 THK. BRASS,
HALF HARD

ENDS - 2 REQ



ASSEMBLY

NOTE ~ WELD ENDS & MOUNTING
BRACKET TO STRAP,
AS SHOWN.

NOTICE TO PERSONS RECEIVING THIS DRAWING

THE TECHNICAL MATERIEL CORPORATION claims proprietary right in the material disclosed hereon. This drawing is issued in confidence for engineering information only and may not be reproduced or used to manufacture anything shown hereon without permission from THE TECHNICAL MATERIEL CORPORATION to the user. This drawing is loaned for mutual assistance and is subject to recall at any time.

Property of:
THE TECHNICAL MATERIEL CORPORATION
MAMARONECK, NEW YORK

ISSUE	ITEM	CHANGED FROM	DATE	CH. NO.	DRAFTS	CHECKER	ENG. APP.
TOLERANCES		SCALE:					
DEC. DIM. ±		MAXIMUM ALLOWABLE TOLERANCES HAVE BEEN DETERMINED AND ANY DEVIATIONS WILL BE CAUSE FOR REJECTION.					
FRAC. DIM. ± 1/64		REMOVE ALL BURRS AND SHARP EDGES					
ANGULAR DIM. ±							

REQ. PER UNIT	AX-212	GPT-40K	ASS'Y. NO.	1-14-60
	MODEL	PROJECT NO.	DATE	

REQ. ITEM	PART NO.	DESCRIPTION	SYMBOL
SEE DETAILS	STOCK SIZE	THE TECHNICAL MATERIEL CORP. MAMARONECK, NEW YORK	
SEE DETAILS		CLAMP, TUBE (CROWBAR DRAWER)	
SEE DETAILS			
TYPE & TEMPER	HEAT TREAT. SPEC.	DRAWN	CHECKED
5135 NICKEL PLATE .0005 THK.		em	
FINISH & SPEC. NO.		ELEC. DES. APP.	MECH. DES. APP.
			MS-1939