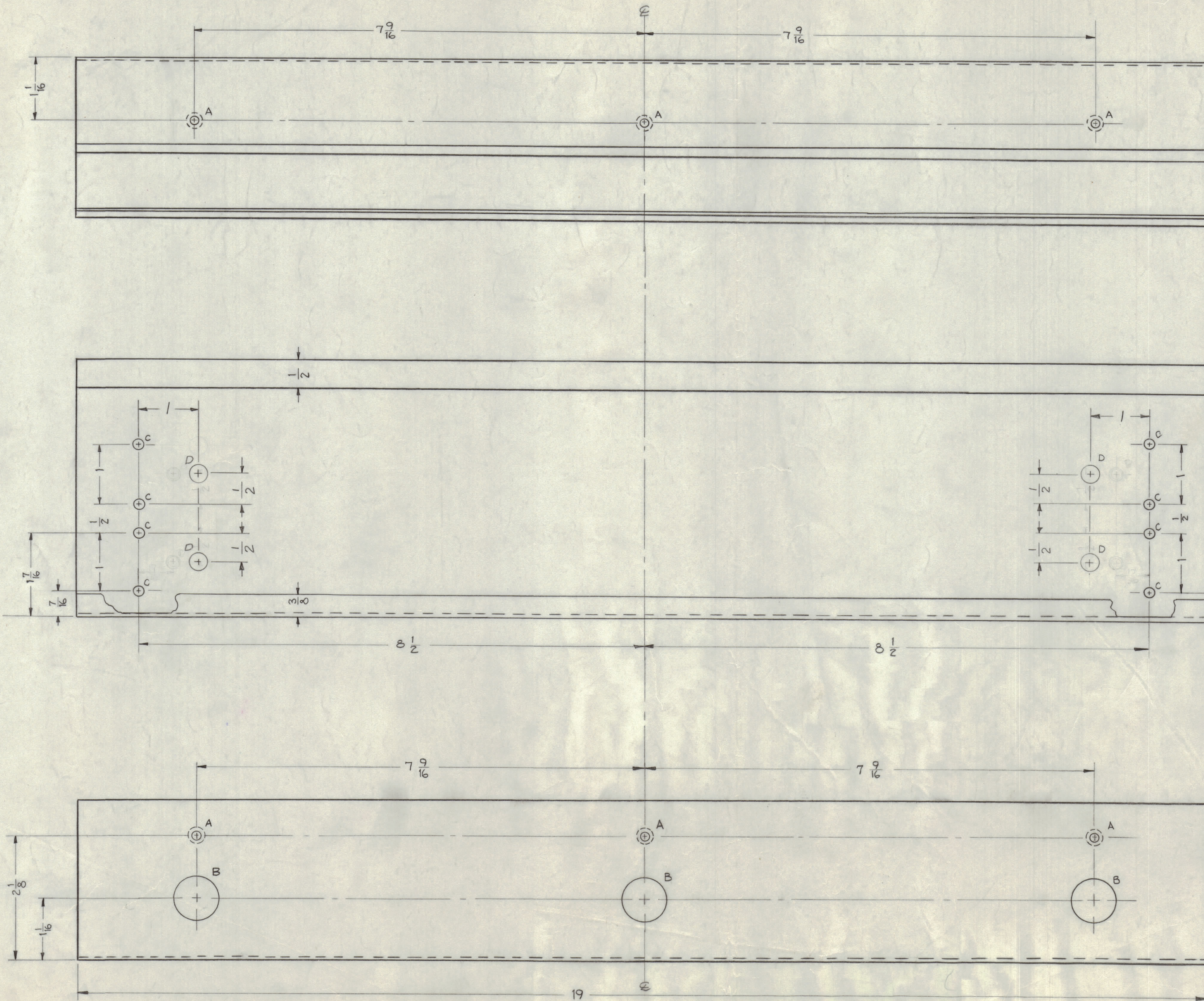


IF IT IS FOUND DESIRABLE TO CHANGE ANY TOLERANCE OR OTHER DETAIL SPECIFIED ON THIS DRAWING NOTIFY THE PURCHASER PROMPTLY.  
 MAXIMUM ALLOWABLE TOLERANCES HAVE BEEN DETERMINED AND DEVIATIONS WILL BE CAUSE FOR REJECTION. REMOVE ALL BURRS AND SHARP EDGES

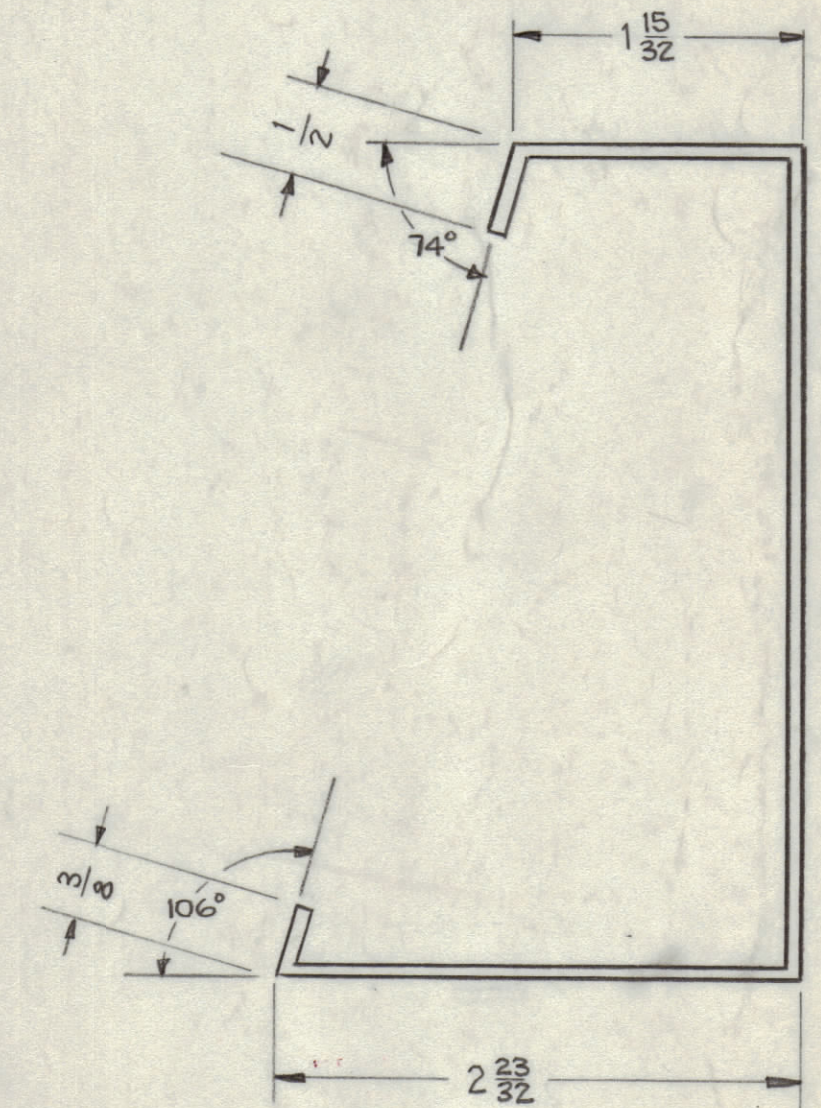
NOTICE TO PERSONS RECEIVING THIS DRAWING

THE TECHNICAL MATERIEL CORPORATION claims proprietary right in the material disclosed herein. This drawing is issued in confidence for engineering information only and may not be reproduced or used to manufacture anything shown herein without permission from THE TECHNICAL MATERIEL CORPORATION to the user. This drawing is loaned for mutual assistance and is subject to recall at any time.

Property of:  
 THE TECHNICAL MATERIEL CORPORATION  
 MAMARONECK, NEW YORK



| HOLES                   | REQ |
|-------------------------|-----|
| A ~ 6-32 FLATHEAD SCREW | 6   |
| B ~ 3/4 (.750) DIA.     | 3   |
| C ~ 1/64 (.171) DIA     | 8   |
| D ~ 5/16 DIA.           | 4   |



MS-1934 B

FINISH NOTE  
 S-101 CAUSTIC DIP  
 S-107 LACQUER DIP

|            |                                  |  |        |         |        |         |           |
|------------|----------------------------------|--|--------|---------|--------|---------|-----------|
| B          | 74° WAS 94° # 1 DIM WAS 1752 (2) | 1/4/68   | 18 716 | H.S.    | EFM    |         |           |
| A          | 17/32 WAS 1/16 (2 PL)            | 9/25/64  | 11 664 | A.M.    |        |         |           |
|            | D HOLES WERE 13/64 DIA           |  |        |         |        |         |           |
| ISSUE      | ITEM                             | CHANGED FROM   | DATE   | CN. NO. | DRAFTS | CHECKER | ENG. APP. |
| TOLERANCES |                                  |  | SCALE: |         |        |         |           |
| ALL        | DEC. DIM. ±                      | DRILL PUNCH COMMERCIAL STOCK                         |        |         |        |         |           |
| OTHERS     | ANGULAR DIM. ±                   | SIZES AND MANUFACTURERS TOLERANCES ARE NOT INCLUDED. |        |         |        |         |           |

|              |       |             |           |      |
|--------------|-------|-------------|-----------|------|
| 1            | CON   | PROJECT NO. | ASSY. NO. | DATE |
| REQ PER UNIT | MODEL | USED ON     |           |      |

|           |                    |                              |        |
|-----------|--------------------|------------------------------|--------|
| REQ. ITEM | PART NO.           | DESCRIPTION                  | SYMBOL |
|           | 051                | THE TECHNICAL MATERIEL CORP. |        |
|           | STOCK SIZE         | MAMARONECK, NEW YORK         |        |
|           | ALUMINUM           | LIGHT FIXTURE REFLECTOR      |        |
|           | MATERIAL           | 5052-H32                     |        |
|           | WEIGHT PER PC.     |                              |        |
|           | TYPE & TEMPER      |                              |        |
|           | DRAWN              |                              |        |
|           | ELEC. DES. APP.    |                              |        |
|           | CHECKED            |                              |        |
|           | MECH. DES. APP.    |                              |        |
|           | HEAT TREAT. SPEC.  |                              |        |
|           | SEE NOTE           |                              |        |
|           | FINISH & SPEC. NO. |                              |        |
|           |                    | MS-1934                      | B      |