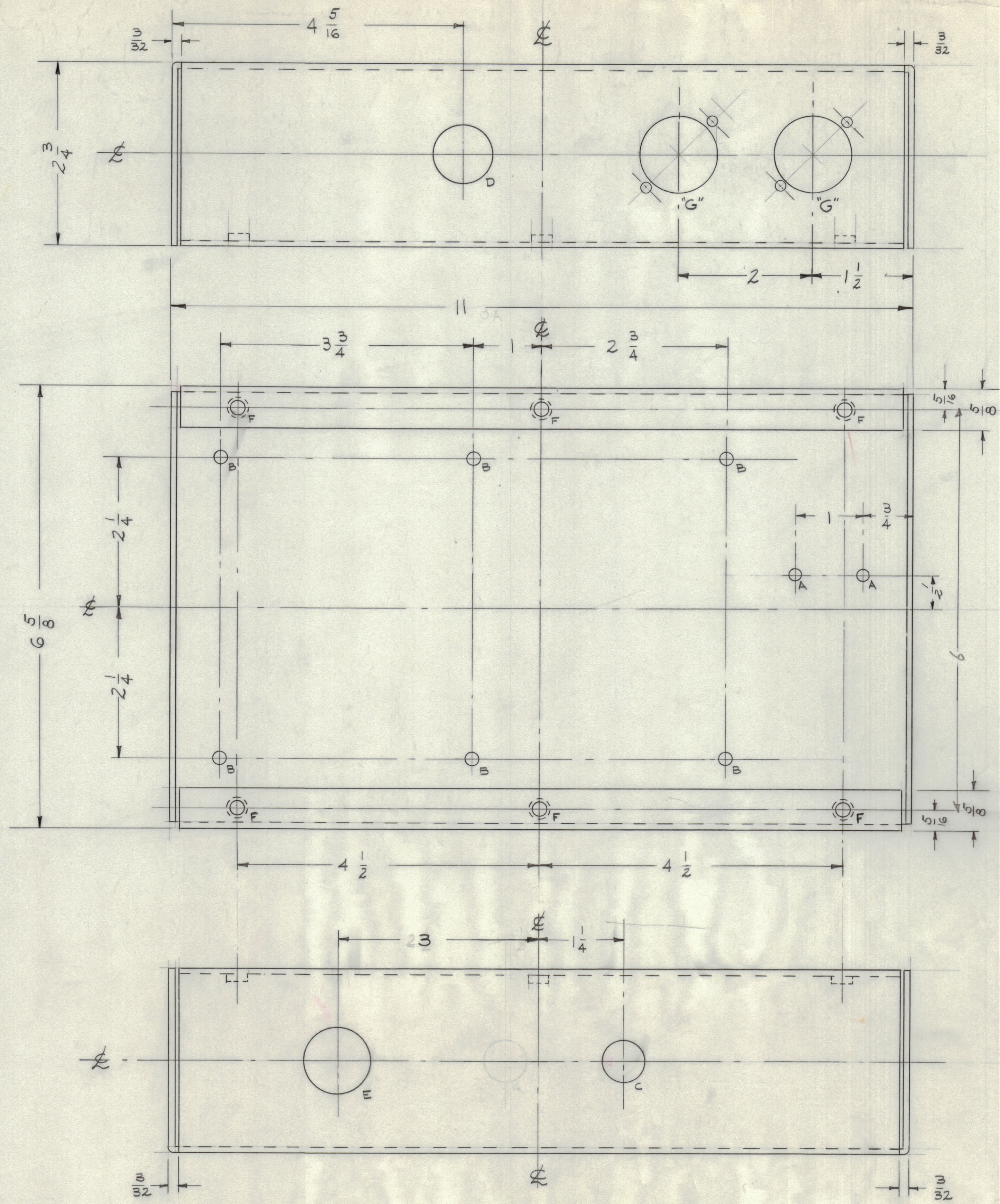


IF IT IS FOUND DESIRABLE TO CHANGE ANY TOLERANCE OR OTHER DETAIL SPECIFIED ON THIS DRAWING NOTIFY THE PURCHASER PROMPTLY.
 MAXIMUM ALLOWABLE TOLERANCES HAVE BEEN DETERMINED AND DEVIATIONS WILL BE CAUSE FOR REJECTION.
 REMOVE ALL BURRS AND SHARP EDGES

NOTICE TO PERSONS RECEIVING THIS DRAWING

THE TECHNICAL MATERIEL CORPORATION claims proprietary right in the material disclosed hereon. This drawing is issued in confidence for engineering information only and may not be copied or used to manufacture any part shown hereon without permission from THE TECHNICAL MATERIEL CORPORATION. This drawing is loaned for mutual assistance and is subject to recall at any time.

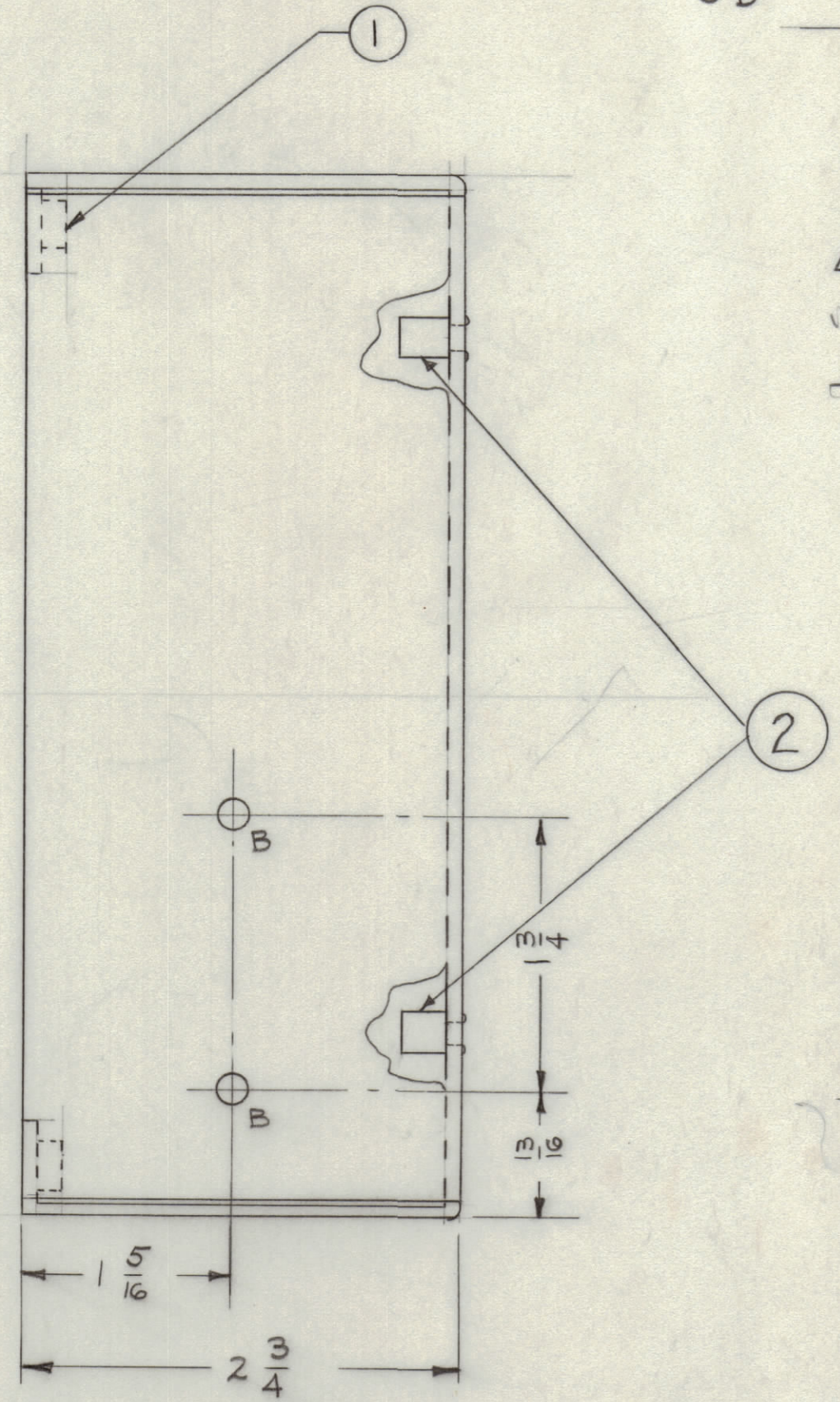
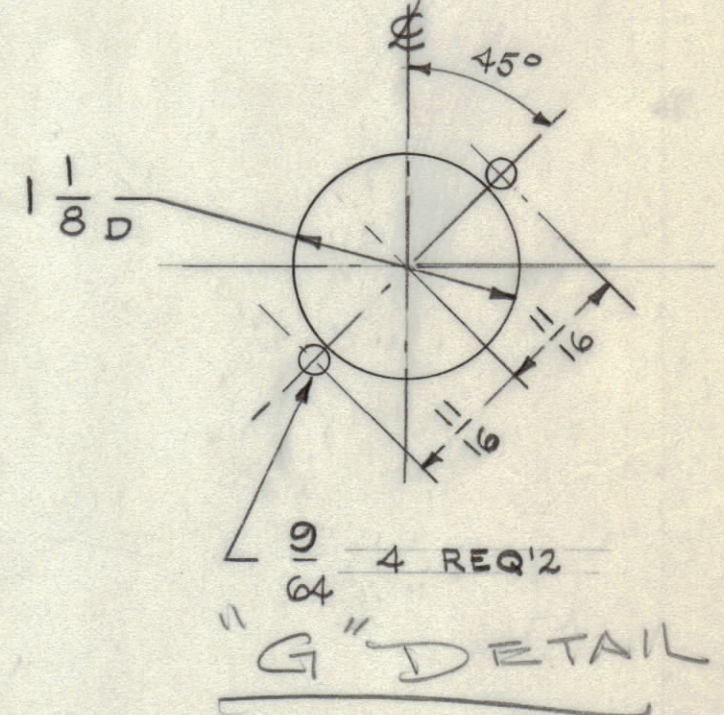
Property of:
 THE TECHNICAL MATERIEL CORPORATION
 MAMARONECK, NEW YORK



HOLE LEGEND

A - 11/64 (.171) DIA.	2 REQ'D.
B - 3/16 (.187) "	8
C - 5/8 (.625) "	1
D - 7/8 (.875) "	1
E - 1.000 "	1
F - (.194-.191) DIA.	6
(MOUNT NT-129-632-4)	

"G" - 2 REQ'D.



MS-1922
 A

ISSUE	1	DELETED 1" HOLE ADDED "G" DETAIL	1-28 50	1819	R	[Signature]
CHANGED FROM						
DATE						
CN. NO.						
DRAFTS						
CHECKER						
ENG. APP.						

ALL DIM. ±
 DEC. DIM. ±
 FRAC. DIM. ±
 ANGULAR DIM. ±

SCALE: DRILL PUNCH, COMMERCIAL STOCK SIZES AND MANUFACTURERS TOLERANCES ARE NOT INCLUDED.

REQ. PER UNIT	1	MODEL	RAK-9	PROJECT NO.	SBT-1K	ASSY. NO.		DATE	12-11-59
USED ON									

REQ. ITEM	6	2	TE-108-1	STANDOFF, RIVET TYPE
REQ. ITEM	6	1	NT-129-632-4	NUT, ROUND, SWAGE TYPE
STOCK SIZE		.081		
MATERIAL		ALUMINUM		
WEIGHT PER PC.		5052-H32		
TYPE & TEMPER.		5052-H32		
HEAT TREAT. SPEC.		T3		
FINISH & SPEC. NO.		S404 YEL. IRIDITE		
DRAWN				FILE
ELEC. DES. APP.				[Signature]
MECH. DES. APP.				[Signature]
CHECKED				[Signature]
FINAL APPROVAL				[Signature]
				MS-1922 A