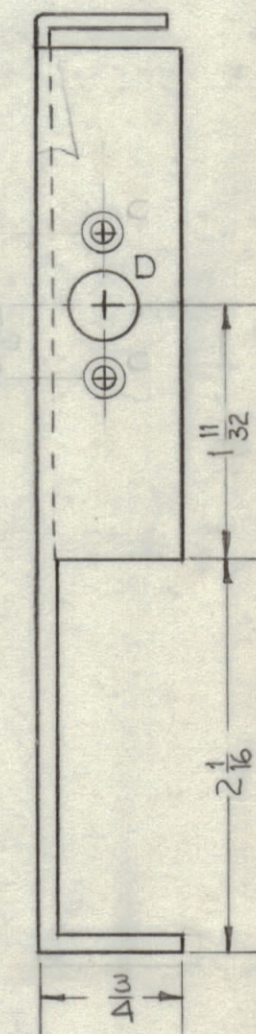
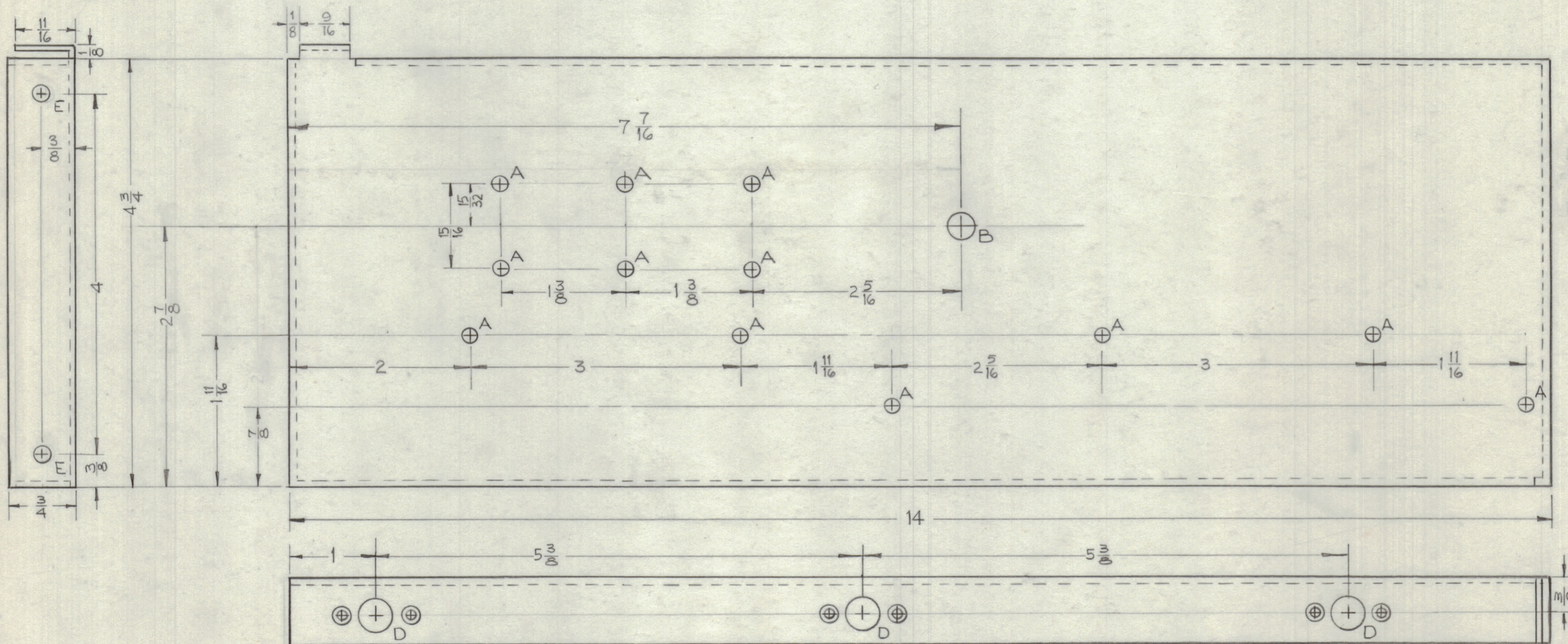
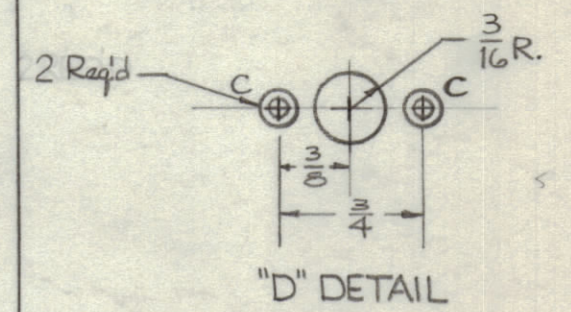


IF IT IS FOUND DESIRABLE TO CHANGE ANY TOLERANCE OR OTHER DETAIL SPECIFIED ON THIS DRAWING NOTIFY THE PURCHASER PROMPTLY.

MAXIMUM ALLOWABLE TOLERANCES HAVE BEEN DETERMINED AND DEVIATIONS WILL BE CAUSE FOR REJECTION. REMOVE ALL BURRS AND SHARP EDGES.

HOLES	REQ'D
A- 8-32 Clearance	12
B- 5/16(.312) Dim.	1
C- 3-48 Countersunk	8
D- 3/8(.375) Dim.	4
E- 10-32 Clearance	2



MS-1868 \emptyset

MS-1868-1	RIGHT SIDE SHOWN
MS-1868-2	LEFT SIDE OPPOSITE HAND

NOTICE TO PERSONS RECEIVING THIS DRAWING

THE TECHNICAL MATERIEL CORPORATION claims proprietary right in the material disclosed herein. This drawing is issued in confidence or engineering information only and may not be reproduced or used to manufacture anything shown hereon without permission from THE TECHNICAL MATERIEL CORPORATION to the user. This drawing is loaned for mutual assistance and is subject to recall at any time.

Property of:

THE TECHNICAL MATERIEL CORPORATION
MAMARONECK, NEW YORK

\emptyset	ORIGINAL RELEASE FOR PRODUCTION	1/25/69	CV				
ISSUE	ITEM	CHANGED FROM	DATE	CH. NO.	DRAFTS	CHECKER	ENG. APP.
TOLERANCES		SCALE:					
ALL OTHERS	DEC. DIM. \pm FRAC. DIM. \pm ANGULAR DIM. \pm	DRILL, PUNCH, COMMERCIAL STOCK SIZES AND MANUFACTURERS TOLERANCES ARE NOT INCLUDED.					

REQ. PER UNIT	MODEL	PROJECT NO.	ASSY. NO.	DATE
		E-1047-2		9-14-59
USED ON				

REQ. ITEM	PART NO.	DESCRIPTION	SYMBOL
.064		THE TECHNICAL MATERIEL CORP. MAMARONECK, NEW YORK	
ALUMINUM		SIDE PLATE	
MATERIAL	WEIGHT PER PC.	HFL	
5052-H32			
TYPE & TEMPER			
	DRAWN	ELEC. DES. APP.	MECH. DES. APP.
	4/22/69		
HEAT TREAT. SPEC.	CHECKED	FINAL APPROVAL	
5404 Yellow Iridite		MS-1868	\emptyset
FINISH & SPEC. NO.			