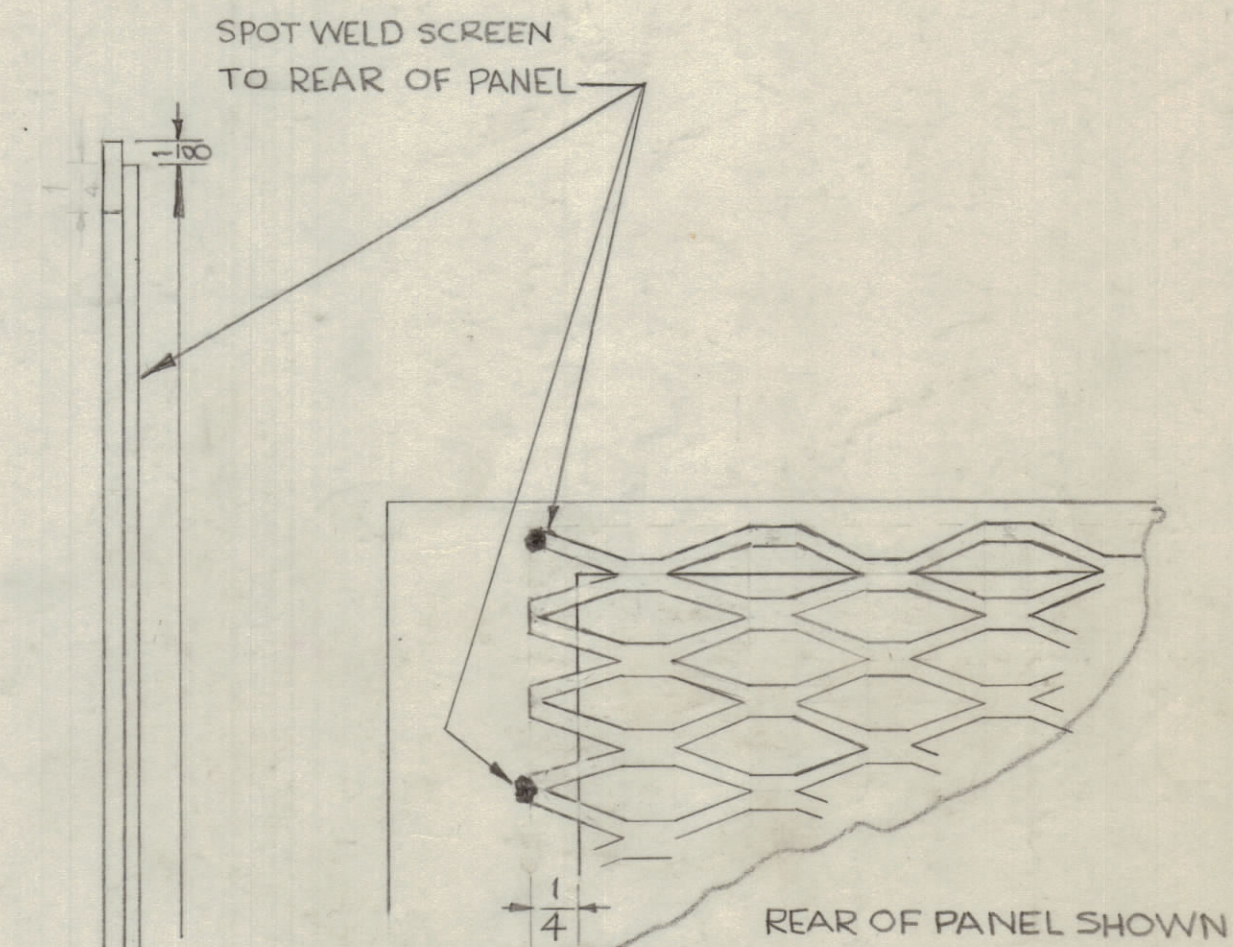
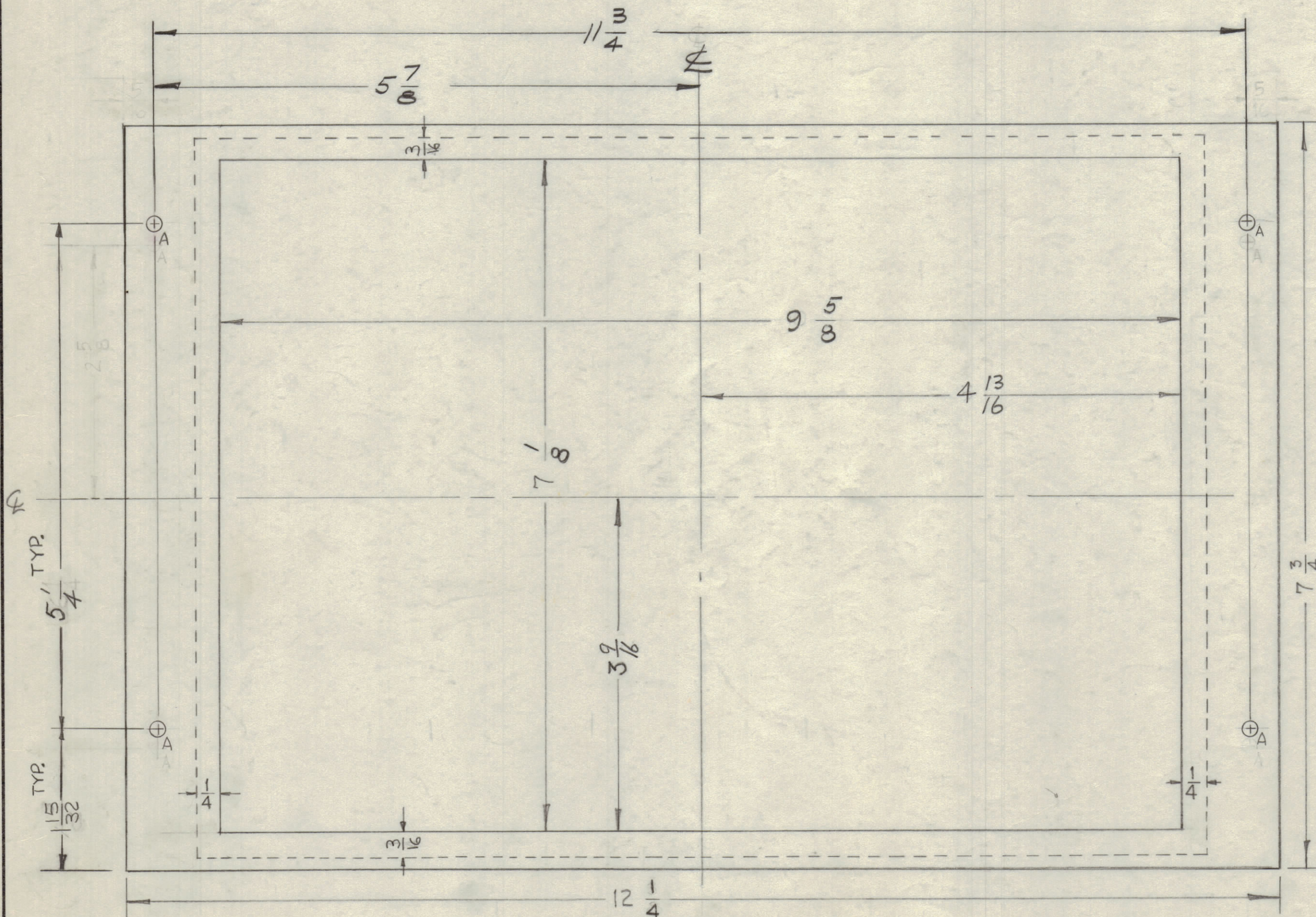


IF IT IS FOUND DESIRABLE TO CHANGE ANY TOLERANCE OR OTHER DETAIL SPECIFIED ON THIS DRAWING NOTIFY THE PURCHASER PROMPTLY.

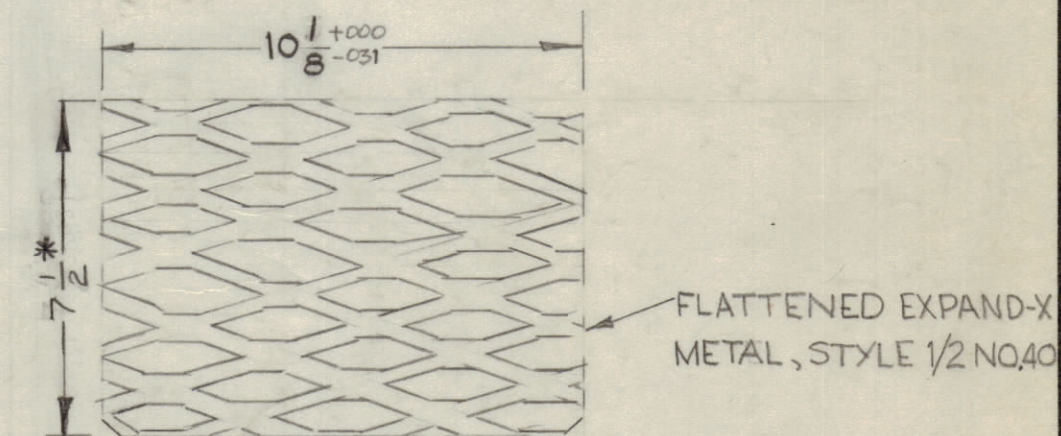
MAXIMUM ALLOWABLE TOLERANCES HAVE BEEN DETERMINED AND DEVIATIONS WILL BE CAUSE FOR REJECTION. REMOVE ALL BURRS AND SHARP EDGES.

HOLES
A - $\frac{5}{32}$ DIA. DIA.

REQ'D
4

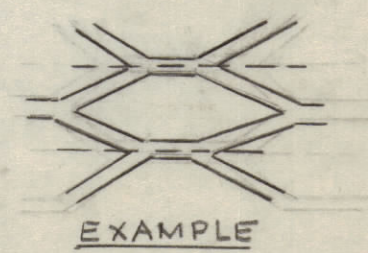


MS-1856 C



SCREEN DETAIL

* THIS DIMENSION MAY VARY $\pm 1/16$ TO INSURE SHEARING ONLY ON WEB BETWEEN DIAMOND OPENINGS.



FINISH:
S-371 - DEGREASE
S-114 - ZINC CHROMATE PRIMER
S-220 - TCAF BLUE GRAY ENAMEL

TOLERANCES	
DECIMALS	FRACTIONS
.X \pm .05	$\pm 1/64$
.XX \pm .01	ANGLES, $\pm 0^{\circ} 30'$
.XXX \pm .005	

CUT HERE GUARANTEED DATA

NOTICE TO PERSONS RECEIVING THIS DRAWING

THE TECHNICAL MATERIEL CORPORATION claims proprietary right in the material disclosed hereon. This drawing is issued in confidence for engineering information only and may not be reproduced or used to manufacture anything shown hereon without permission from THE TECHNICAL MATERIEL CORPORATION to the user. This drawing is loaned for mutual assistance and is subject to recall at any time.

Property of:

THE TECHNICAL MATERIEL CORPORATION
MAMARONECK, NEW YORK

ISSUE	ITEM	CHANGED FROM	DATE	CH. NO.	DRAFTS	CHECKER	ENG. APP.
C	2	* NOTE ADDED 7 1/2* WAS 7 1/2 \pm .031	10-15-64	12658	hbs	@	[Signature]
B	2	A WAS 9/64 DIA.	2-2-62	6296	LA	[Signature]	[Signature]
A	1	1-15/32 DIM. WAS 1-3/8	9-14-64	2948	WA	[Signature]	[Signature]
A	1	7 1/2 DIM. WAS 7 3/8 DIM.	9-14-64	2948	WA	[Signature]	[Signature]

REQ. PER UNIT	MODEL	PROJECT NO.	ASSY. NO.	DATE
1	CPP-2	E-1047-1		9-1-59
USED ON				

REQ. ITEM	PART NO.	DESCRIPTION	SYMBOL
18 GAUGE		THE TECHNICAL MATERIEL CORP. MAMARONECK, NEW YORK	
STEEL		FRONT PANEL SCREEN	
MATERIAL	WEIGHT PER PC.		
Mild			
TYPE & TEMPER			
HEAT TREAT. SPEC.			
SEE NOTE			
FINISH & SPEC. NO.			

MS-1856 C