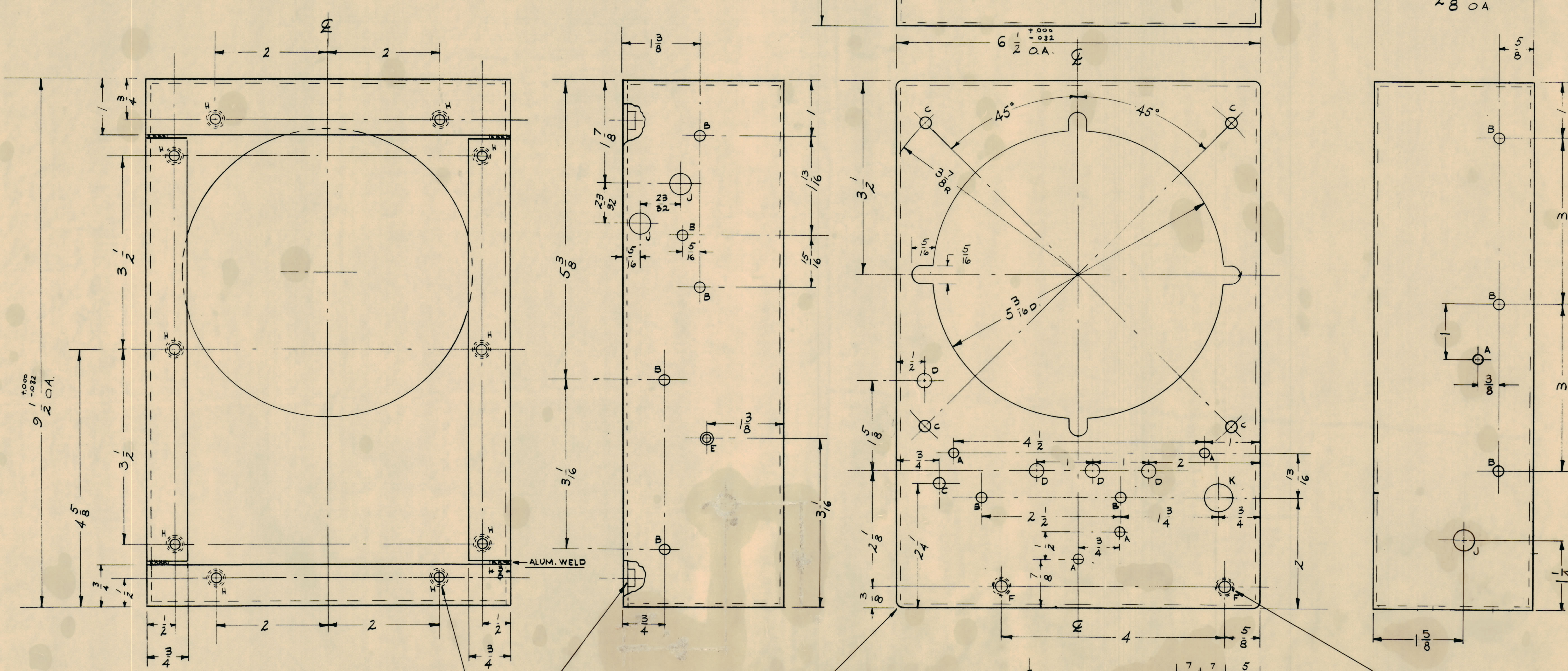


IF IT IS FOUND DESIRABLE TO CHANGE ANY TOLERANCE OR OTHER DETAIL SPECIFIED ON THIS DRAWING NOTIFY THE PURCHASER PROMPTLY.
 MAXIMUM ALLOWABLE TOLERANCES HAVE BEEN DETERMINED AND DEVIATIONS WILL BE CAUSE FOR REJECTION. REMOVE ALL BURRS AND SHARP EDGES

THE TECHNICAL MATERIEL CORPORATION claims proprietary right in the material disclosed herein. This drawing is issued in confidence for engineering information only and may not be reproduced or used to manufacture anything shown hereon without permission from THE TECHNICAL MATERIEL CORPORATION to the U.S. Govt. This drawing is loaned for mutual assistance and is subject to recall at any time.
 Property of:
 THE TECHNICAL MATERIEL CORPORATION
 MAMARONECK, NEW YORK



- K - 1/2 DIA.
- J - (.375)
- H - (.161 - .164)
- G - (.221 - .224)
- F - (.191 - .194)
- E - DRILL & C SINK FOR 6-32 FLATHEAD SCREW
- D - 1/4 DIA (.25)
- C - 1/64 DIA (.203)
- B - 3/16 DIA (.187)
- A - 1/64 DIA (.171)

- 1
- 3
- 10
- 4
- 2
- 1
- 11
- 14
- 7

NT-129-440-4
 10 - REQ'D.

NT-129-832
 4 - REQ'D.

NT-129-632-4
 2 REQ'D.

ISSUE	ITEM	CHANGED FROM	DATE	CH. NO.	DRAFTS	CHECKER	ENG. APP.
TOLERANCES		SCALE:					
ALL DEC. DIM. ±		DRILL PUNCH, COMMERCIAL STOCK					
OTHERS FRAC. DIM. ±		SIZES AND MANUFACTURERS					
ANGULAR DIM. ±		TOLERANCES ARE NOT INCLUDED.					

REQ. PER UNIT	MODEL	PROJECT NO.	ASSY. NO.	DATE
	REF-1	PALIK		6-26-59

REQ. ITEM	PART NO.	DESCRIPTION	SYMBOL
OB1		THE TECHNICAL MATERIEL CORP. MAMARONECK, NEW YORK	
		TUBE CHASSIS	
MATERIAL		ALUMINUM	
TYPE & TEMPER		7075-T6	
HEAT TREAT. SPEC.		3-404 IRIDIPE	
FINISH & SPEC. NO.			

MS-1828