

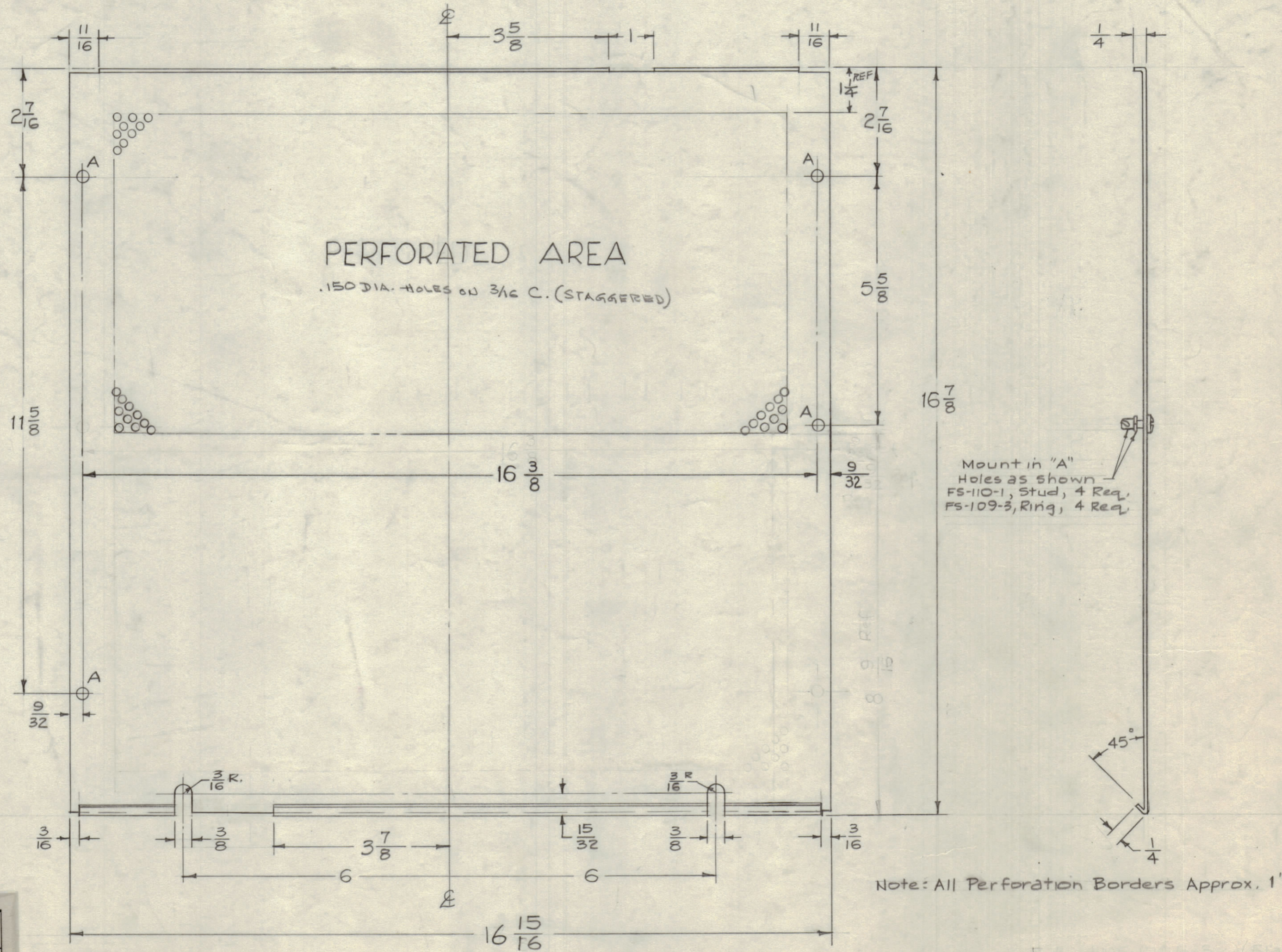
IF IT IS FOUND DESIRABLE TO CHANGE ANY TOLERANCE OR OTHER DETAIL SPECIFIED ON THIS DRAWING NOTIFY THE PURCHASER PROMPTLY.

MAXIMUM ALLOWABLE TOLERANCES HAVE BEEN DETERMINED AND DEVIATIONS WILL BE CAUSE FOR REJECTION. REMOVE ALL BURRS AND SHARP EDGES.

NOTICE TO PERSONS RECEIVING THIS DRAWING

THE TECHNICAL MATERIEL CORPORATION claims proprietary right in the material disclosed herein. This drawing is issued in confidence for engineering information only and may not be reproduced or used to manufacture anything shown hereon without permission from THE TECHNICAL MATERIEL CORPORATION to the user. This drawing is loaned for mutual assistance and is subject to recall at any time.

Property of:
THE TECHNICAL MATERIEL CORPORATION
MAMARONECK, NEW YORK



MS-1825 C

CUT HERE GUARANTEED 250

TOLERANCES	
DECIMALS	± .005
FRACTIONS	± 1/64
UNLESS OTHERWISE SPECIFIED	
DIMENSIONS ARE IN INCHES AND INCLUDE CHEMICALLY APPLIED OR PLATED FINISHES	
TOLERANCES	
KEY ± .005	
XX ± .01	
ANGLES	± 30'

ISSUE	ITEM	CHANGED FROM	DATE	CH. NO.	DRAFTS	CHECKER	ENG. APP.
C	1	BLANK SIZE REF: MS-1775-3, DELETED	4-25-63	8912	my	JK	JK
B	1	Perforated Area Relocated	4-12-61	4640	RU	JK	JK
A	2	Dim 16 3/8 Added	1-8-61	4057	RU	JK	JK
	1	Dim 16 15/16 was 17/8					

TOLERANCES: DEC. DIM. ±, FRAC. DIM. ± 1/64, ANGULAR DIM. ±

SCALE: 1/2 (Do Not Scale)

DRILL, PUNCH, COMMERCIAL STOCK SIZES AND MANUFACTURERS TOLERANCES ARE NOT INCLUDED.

REQ. PER UNIT	MODEL	PROJECT NO.	ASSY. NO.	DATE
1	RFD-1	PAL-1K		6-19-59

USED ON

REQ. ITEM	PART NO.	DESCRIPTION	SYMBOL
.051 THK.		THE TECHNICAL MATERIEL CORP. MAMARONECK, NEW YORK	
PERFORATED ALUMINUM		COVER, BOTTOM (RFD-1)	
5052-H32		16 6/19/59	
TYPE & TEMPER		DRAWN	ELEC. DES. APP. MECH. DES. APP.
HEAT TREAT. SPEC.		CHECKED	FINAL APPROVAL
S404 Iridite.			MS-1825 C
FINISH & SPEC. NO.			