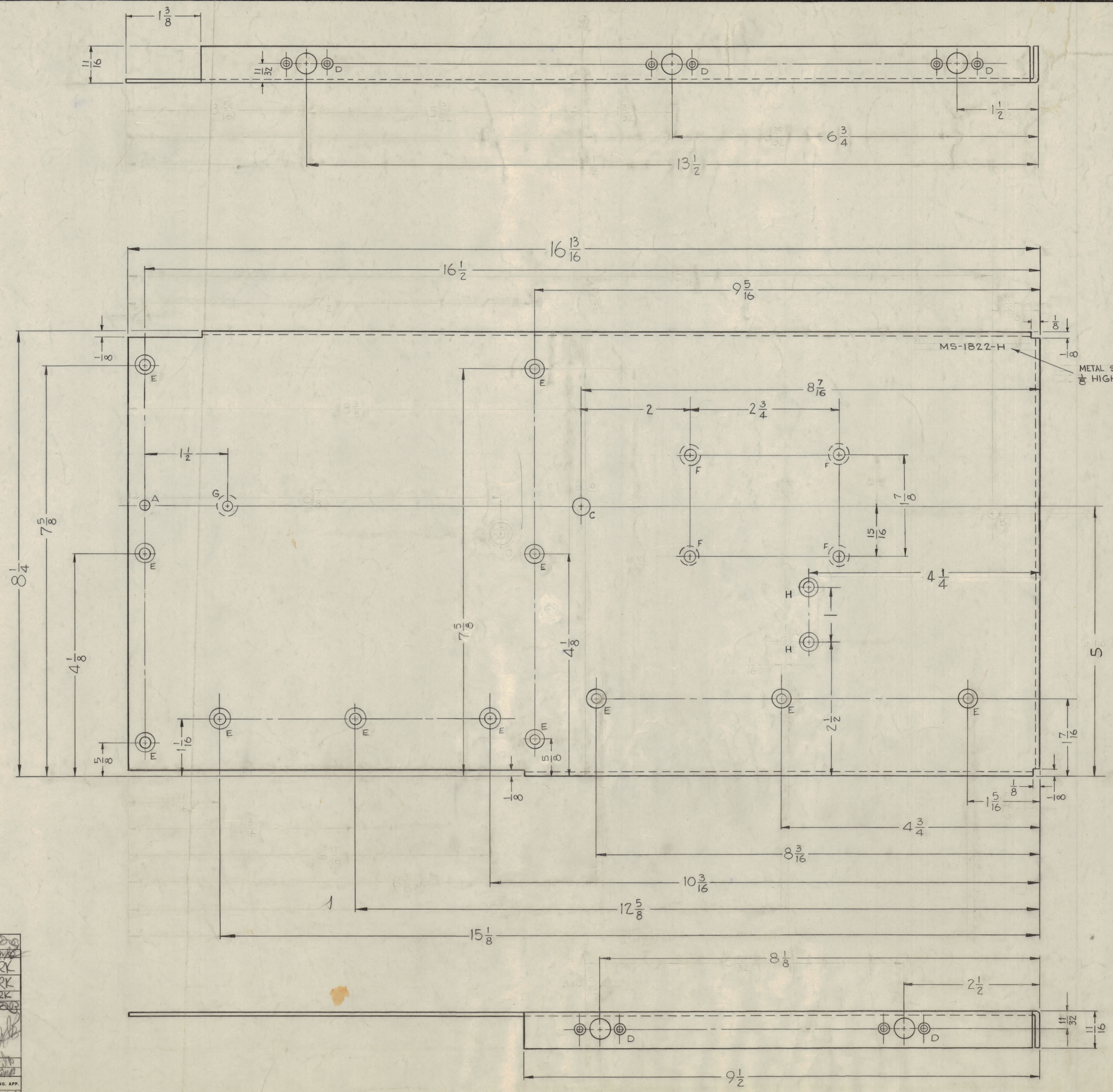
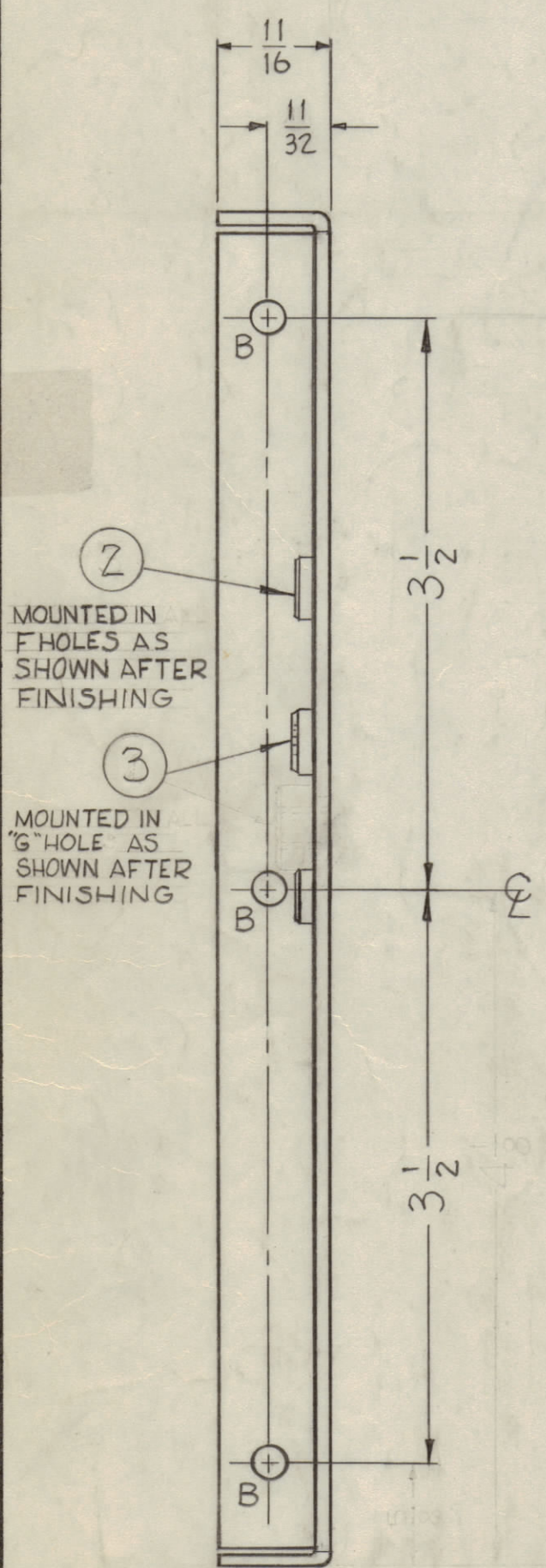


IF IT IS FOUND DESIRABLE TO CHANGE ANY TOLERANCE OR OTHER DETAIL SPECIFIED ON THIS DRAWING NOTIFY THE PURCHASER PROMPTLY.
 MAXIMUM ALLOWABLE TOLERANCES HAVE BEEN DETERMINED AND DEVIATIONS WILL BE CAUSE FOR REJECTION. REMOVE ALL BURRS AND SHARP EDGES.

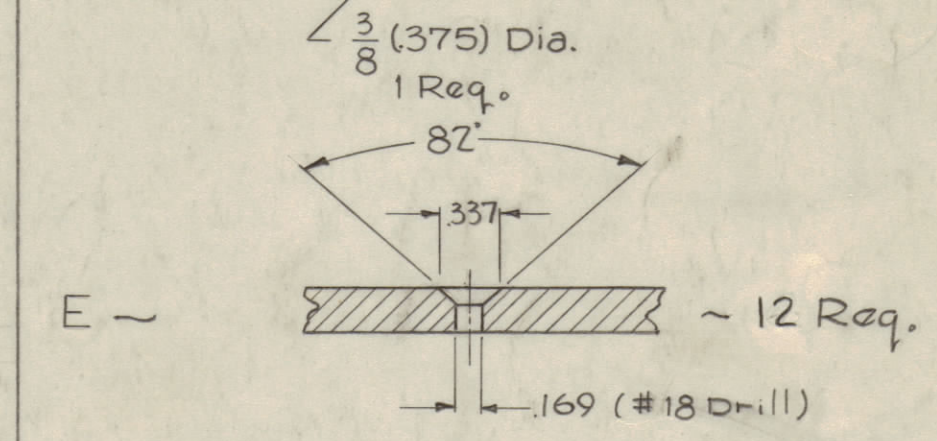
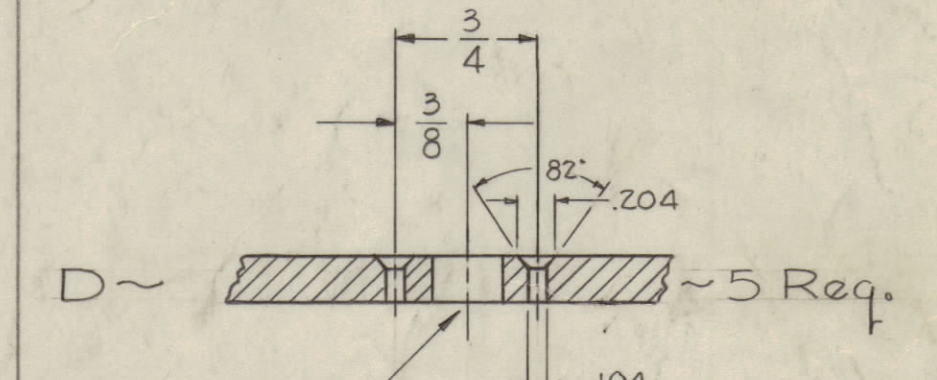
NOTICE TO PERSONS RECEIVING THIS DRAWING

THE TECHNICAL MATERIEL CORPORATION claims proprietary right in the material disclosed hereon. This drawing is issued in confidence for engineering information only and may not be reproduced or used to manufacture anything shown hereon without permission from THE TECHNICAL MATERIEL CORPORATION to the user. This drawing is loaned for mutual assistance and is subject to recall at any time.

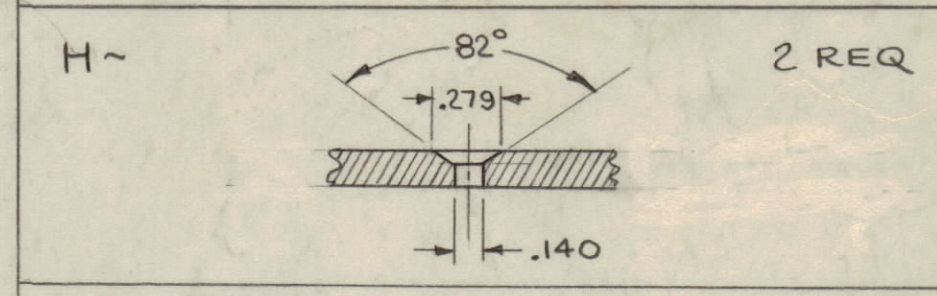
Property of:
 THE TECHNICAL MATERIEL CORPORATION
 MAMARONECK, NEW YORK



- A ~ 11/64 (.171) DIA. 1 Req.
- B ~ 13/64 (.203) DIA. 3 Req.
- C ~ 5/16 DIA. 1 Req.



- F ~ .221-.224 DIA. 4 REQ
- G ~ .191-.194 DIA. 1 REQ



MS-1822 J

USE MATERIAL THICKNESS FOR MAX. RADIUS ON ALL BENDS UNLESS OTHERWISE SPECIFIED

MOUNT INSERTS AFTER FINISHING

J	2" E HOLES CHANGED TO H HOLES E WAS 14 REQ	8-31-64	12187	JTB	@	
H	ADDED 2" E HOLES, WERE N HOLES	8-1-63	5522	JTB		
G	7-5/8 DIM. WAS 7-9/16	2-28-64	10460	JTB		
F	5/8 DIM. WAS 11/16			JTB		
E	ITEM WAS 2 REQ. ITEM WAS 4 REQ	4-4-64	6145	JTB		
D	1" HOLE WAS 1" HOLE	11-8-61	5852	RJ		
C	1" A HOLE RELOCATED 1" HOLE	5-15-61	4908	RJ		
B	1" HOLE DELETED					
A	2" G HOLES WERE 2" HOLES	1-16-61	3202	RJ		
	1" HOLE WAS 1" HOLE					
	5 WAS 4 1/2	9-23-59	1324	JTB		
	E Detail added	7-7-59		JTB		

SCALE: FULL (Do not scale)
 DRILL PUNCH, COMMERCIAL STOCK
 SIZES AND MANUFACTURERS
 TOLERANCES ARE NOT INCLUDED.

1	3	NT-129-632-4	NUT ROUND, SWAGE TYPE "C"	"C"
4	2	NT-129-832-4	NUT, ROUND, SWAGE TYPE "F"	"F"
1			DELETED	
REQ. ITEM	PART NO.	DESCRIPTION	SYMBOL	
	.081	THE TECHNICAL MATERIEL CORP. MAMARONECK, NEW YORK		
	ALUMINUM	PLATE, SIDE, LEFT		
	MATERIAL	WEIGHT PER PC.		
	5052 - H 32			
	TYPE & TEMPER	John C. Biele		
		DRAWN	ELEC. DES. APP.	MECH. DES. APP.
		CHECKED	FINAL APPROVAL	
	HEAT TREAT. SPEC.			
	S404 IRIDITE			
	FINISH & SPEC. NO.			

1	RFD-1	PAL-1K	6-18-59
REQ PER UNIT	MODEL	PROJECT NO.	DATE

MS-1822 J