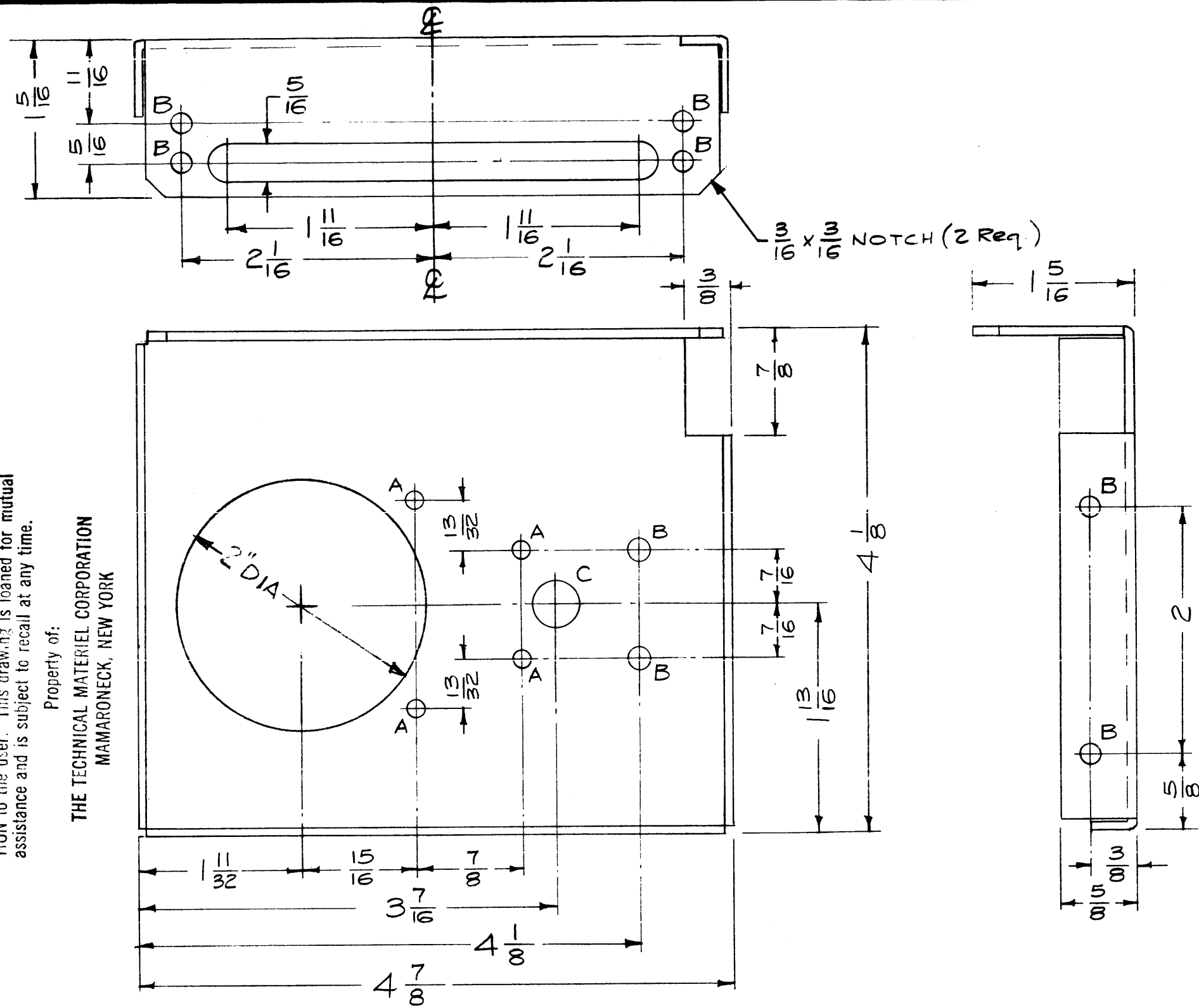


NO. 10 P.L.R.-0-1 RECEIVING THIS DRAWING

THE TECHNICAL MATERIEL CORPORATION claims proprietary right in the material disclosed hereon. This drawing is issued in confidence for engineering information only and may not be reproduced or used to manufacture anything shown hereon without permission from THE TECHNICAL MATERIEL CORPORATION to the user. This drawing is loaned for mutual assistance and is subject to recall at any time.

Property of:

THE TECHNICAL MATERIEL CORPORATION  
MAMARONECK, NEW YORK



- A - 9/64 (.140) D. 4 Req.
- B - 11/64 (.171) D. 10 Req.
- C - 3/8 (.375) D. 1 Req.
- D - 2" DIA 1 REQ.

Ref: 2LD-598

D	DIA. "D" HOLE WAS 1/2	8-6-79	21697	GDL			
C	ADDED 1" D HOLE	6/3/69	19473	GE	JO	FB	
B	STOCK SIZE ADDED MAT. & FINISH ADDED	10/14/59		16	JL	MB	
A	Completely Redrawn & Revised	9/29/59	1352	16	JO	MB	
ISSUE	ITEM	CHANGED FROM	DATE	CH. NO.	DRAFTS	CHECKER	ENG. APP.
TOLERANCES			SCALE: Do Not Scale				
DEC. DIM. ±			MAXIMUM ALLOWABLE TOLERANCES HAVE BEEN DETERMINED AND ANY DEVIATIONS WILL BE CAUSE FOR REJECTION.				
FRAC. DIM. ± 1/64			REMOVE ALL BURRS AND SHARP EDGES				
ANGULAR DIM. ±							

1	ATS-50/70 TU-2	9-29-59
REQ. PER UNIT	MODEL	PROJECT NO.
	ASS'Y. NO.	DATE
USED ON		

REQ. ITEM	PART NO.	DESCRIPTION	SYMBOL
.064 Thk.		THE TECHNICAL MATERIEL CORP. MAMARONECK, NEW YORK	
STOCK SIZE			
Aluminum		PLATE, MOTOR LIMIT SWITCHES	
MATERIAL			
5052 H32		169/29/59	JL
TYPE & TEMPER	HEAT TREAT. SPEC.	RE DRAWN	CHECKED
5404	Ir-dite		
	Yellow		
FINISH & SPEC. NO.	ELEC. DES. APP.	MECH. DES. APP.	
			MS-1814 D