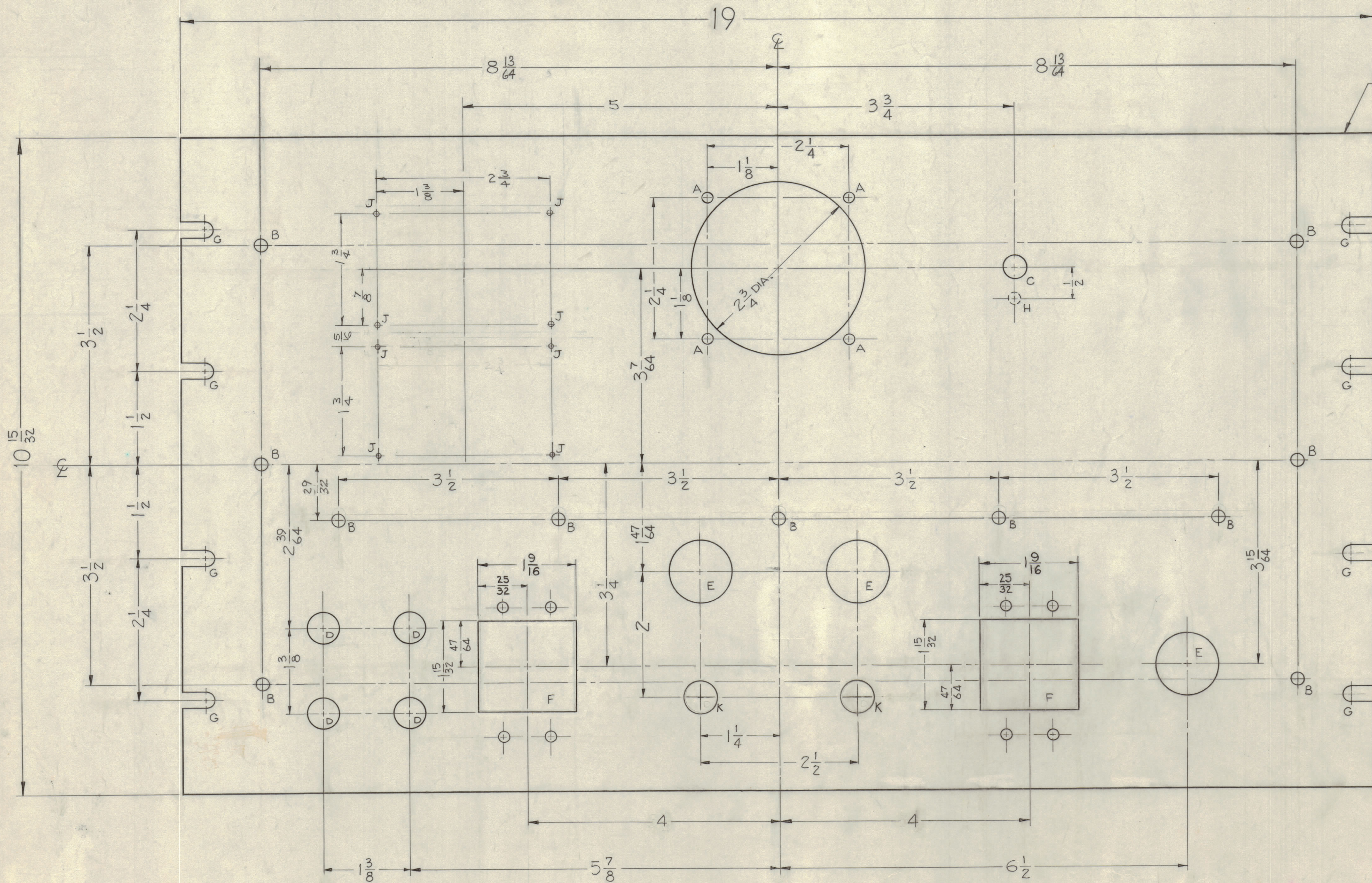
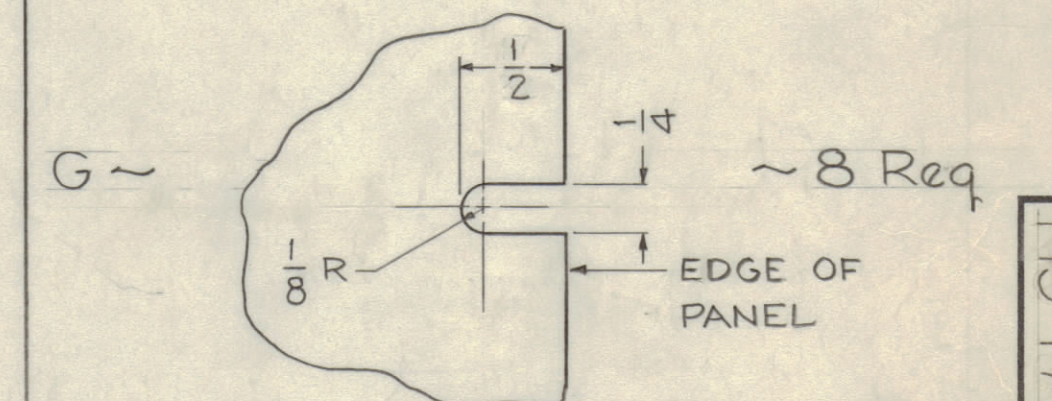
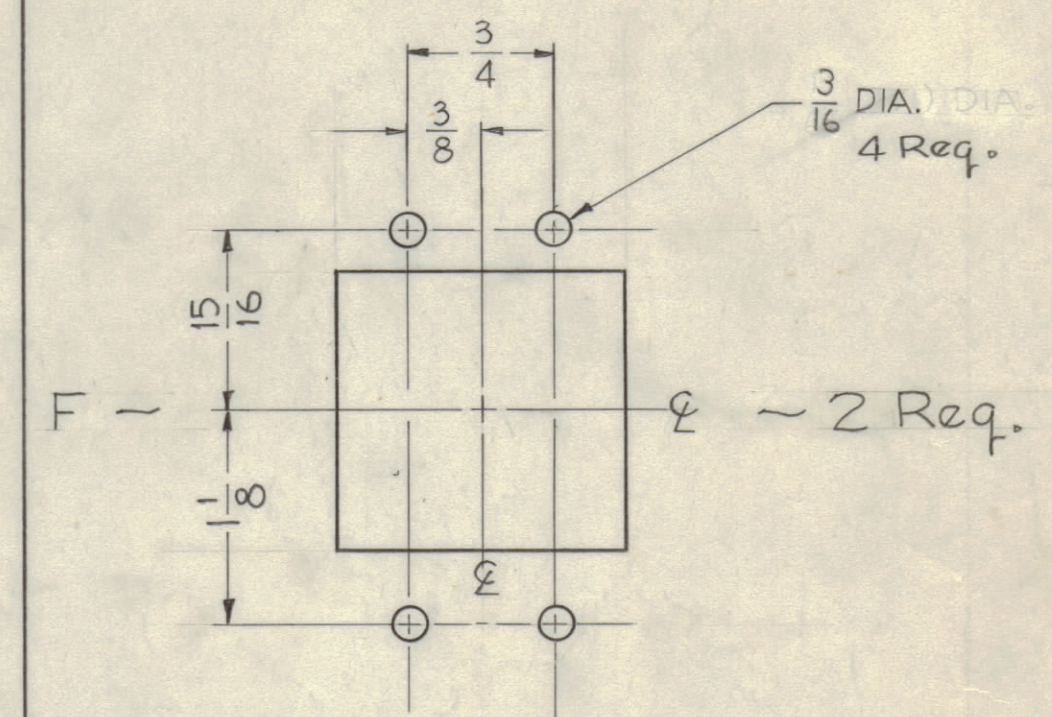


IF IT IS FOUND DESIRABLE TO CHANGE ANY TOLERANCE OR OTHER DETAIL SPECIFIED ON THIS DRAWING NOTIFY THE PURCHASER PROMPTLY.
 MAXIMUM ALLOWABLE TOLERANCES HAVE BEEN DETERMINED AND DEVIATIONS WILL BE CAUSE FOR REJECTION. REMOVE ALL BURNS AND SHARP EDGES



- A - 11/64 (.171) DIA. — 4 Req.
- B - 13/64 (.203) DIA. — 11 Req.
- C - 25/64 (.390) DIA. — 1 Req.
- D - 1/2 (.500) DIA. — 4 Req.
- E - 1" (1.000) DIA. — 3 Req.
- H - 3/16 (.187) DIA. HOLE, 1/8 DEEP FROM REAR OF PANEL.



- J - #47 DRILL — 8 REQ.
- K - 17/32 DIA. — 2 REQ.

NOTES

- FINISH**
- S404 - YELLOW PERIDOTE
 - S114 - ZINC CHROMATE PRIMER
 - S115 - TMC SMOOTH GREY ENAMEL OR PRIME & PAINT TO CUST. SPEC.
- FRONT & EDGES ONLY.
- MACHINING**
- 1 - LATERAL BOW OF PANEL MUST BE KEPT TO .031 TOLERANCE.
 - 2 - MILL ALL EDGES.
 - 3 - HOLES MUST BE DRILLED.
 - 4 - PANEL MUST BE FREE OF ALL MACHINING MARKS, GOUGES, AND SCRATCHES. IF NECESSARY SAND FRONT OF PANEL WITH NO. 120 GRIT SANDPAPER.

NOTICE TO PERSONS RECEIVING THIS DRAWING

THE TECHNICAL MATERIEL CORPORATION claims proprietary right in the material disclosed herein. This drawing is issued in confidence for engineering information only and may not be reproduced or used to manufacture anything shown hereon without permission from THE TECHNICAL MATERIEL CORPORATION to the user. This drawing is loaned for mutual assistance and is subject to recall at any time.

Property of:
 THE TECHNICAL MATERIEL CORPORATION
 MAMARONECK, NEW YORK

REF - TMC DWG NO. 8 LD-519

REQ. ITEM	PART NO.	DESCRIPTION	SYMBOL
1	PS-4	PANEL, FRONT	
MATERIAL		ALUMINUM	
STOCK SIZE		3/16 THICK	
WEIGHT PER PC.		2024-T3	
TYPE & TEMPER		JOHN C. BIELE	
HEAT TREAT. SPEC.			
CHECKED			
FINISH & SPEC. NO.			

ISSUE ITEM	CHANGED FROM	DATE	CN. NO.	DRAFTS	CHECKER	ENG. APP.
A	1/8" HOLES	1/20/53	1	1/20	1/20	1/20
B	DIM. 5 7/64 WAS 5 1/64	10/21/53	2	10/21	10/21	10/21
C	DIM. 2 9/32 WAS 2 1/4	11/14/53	3	11/14	11/14	11/14
D	DRILL CUTOUTS DIM. 1 9/16 WAS 1 1/2	2-24-61	4	2-24	2-24	2-24
E	3/16 DIA. HOLE WAS 1/64 (F. DETAIL)	11-3-61	5	11-3	11-3	11-3

REQ. PER UNIT	MODEL	PROJECT NO.	ASSY. NO.	DATE
1	PS-4	PAL-1K		6-3-59