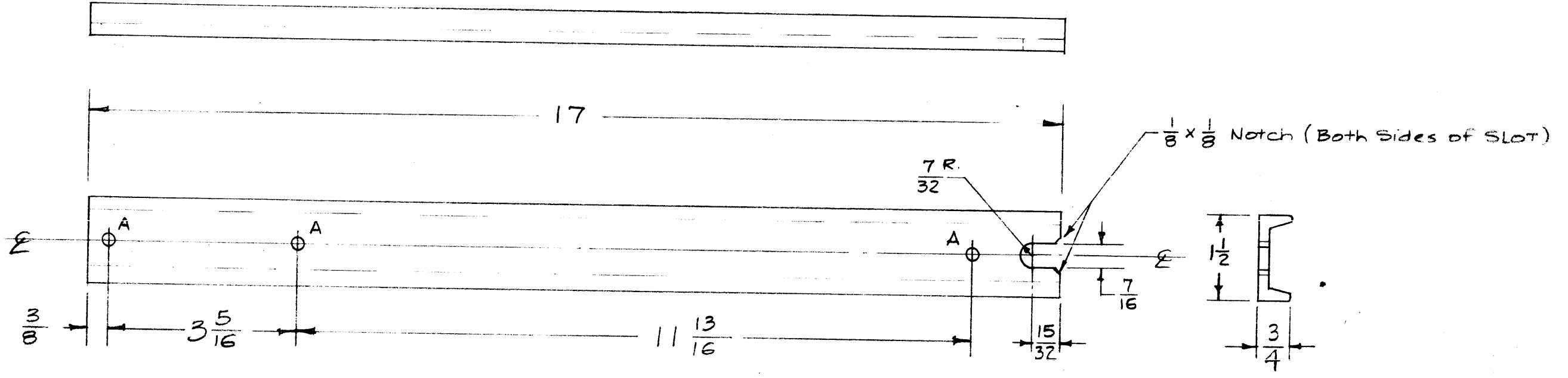


MS-1782 B

A -  $\frac{13}{64}$  (.203) D. 3 Req.



NOTICE TO PERSONS RECEIVING THIS DRAWING

THE TECHNICAL MATERIEL CORPORATION claims proprietary right in the material disclosed hereon. This drawing is issued in confidence for engineering information only and may not be reproduced or used to manufacture anything shown hereon without permission from THE TECHNICAL MATERIEL CORPORATION to the user. This drawing is loaned for mutual assistance and is subject to recall at any time.

Property of:  
THE TECHNICAL MATERIEL CORPORATION  
MAMARONECK, NEW YORK

REV.	ITEM	CHANGED FROM	DATE	CH. NO.	DRAFTS	CHECKER	ENG. APP.
B	1	S105 CADMIUM PLATE ADDED TO FINISH	12/1/65	15312	R.V.	[Signature]	[Signature]
A	2	STOCK SIZE WAS 1 1/2 x 3/4 x 3/16.	10/26/60	3273	DYM	[Signature]	RR
	1	DM. 3/4 WAS 9/16.					

TOLERANCES: DEC. DIM. ±, FRAC. DIM. ± 1/64, ANGULAR DIM. ±

SCALE: 1/2 (Do Not Scale)

MAXIMUM ALL WABLE TOLERANCES HAVE BEEN DETERMINED AND ANY DEVIATIONS WILL BE CAUSE FOR REJECTION. REMOVE ALL BURRS AND SHARP EDGES

2	PS-5	PAL-1K		6-12-59
REQ. PER UNIT	MODEL	PROJECT NO.	AS Y. NO.	DATE
USED ON				

REQ. ITEM	PART NO.	DESCRIPTION	SYMBOL
1	1 1/2 x 3/4 x 1/8 Thk.	THE TECHNICAL MATERIEL CORP.	
STOCK SIZE		MAMARONECK, NEW YORK	
Steel "U" Channel		TRACK, SUPPORT	
MATERIAL			
Hot Rolled			
TYPE & TEMPER		16 1/2/59	
HEAT TREAT. SPE.			
DRAWN		CHECKED	FINAL APPROVAL
S105 CADMIUM PLATE			
S424 IRIDITE			
FINISH & SPEC. N.			
ELEC. DES. APP.			
MECH. DES. APP.		MS-1782	B