

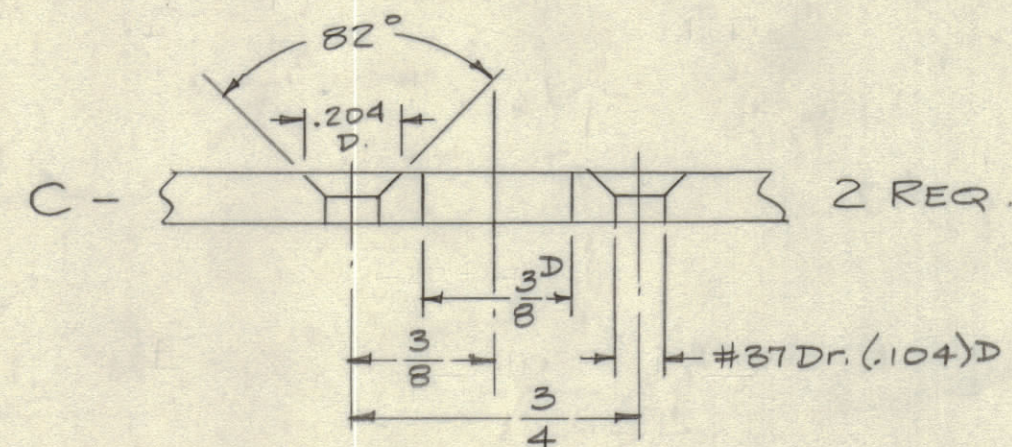
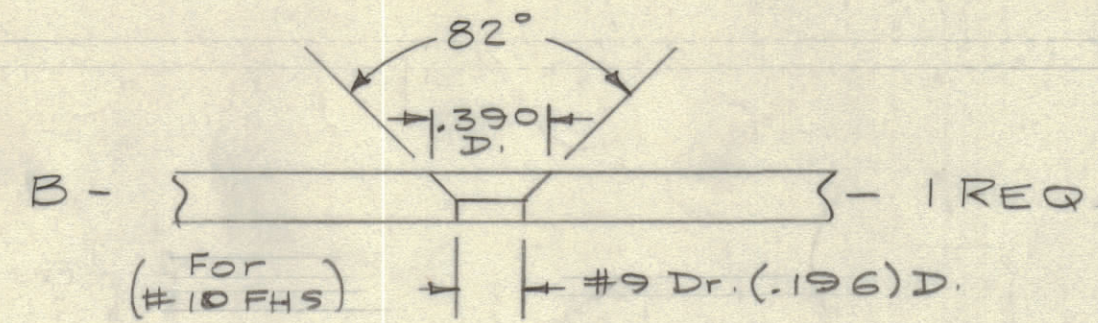
IF IT IS FOUND DESIRABLE TO CHANGE ANY TOLERANCE OR OTHER DETAIL SPECIFIED ON THIS DRAWING NOTIFY THE PURCHASER PROMPTLY.
 MAXIMUM ALLOWABLE TOLERANCES HAVE BEEN DETERMINED AND DEVIATIONS WILL BE CAUSE FOR REJECTION. REMOVE ALL BURRS AND SHARP EDGES

NOTICE TO PERSONS RECEIVING THIS DRAWING

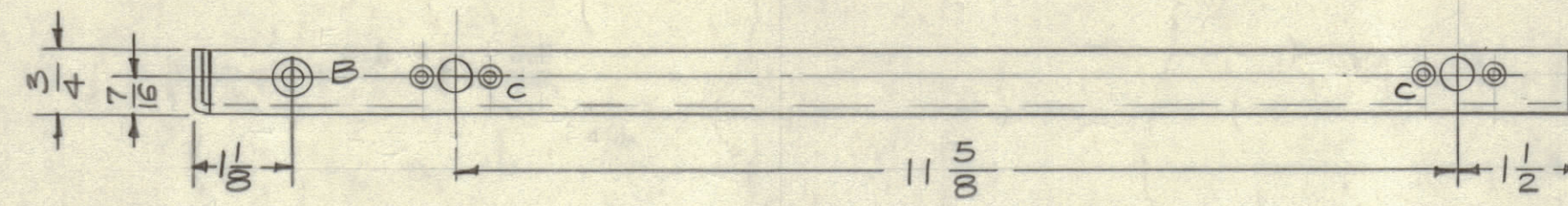
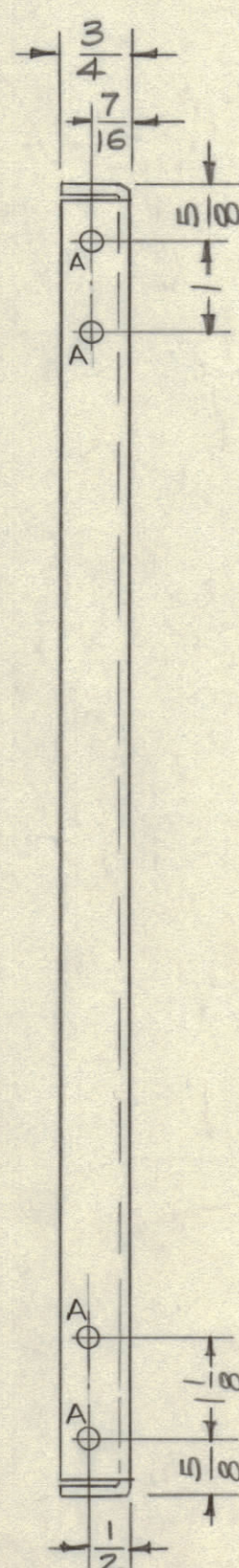
THE TECHNICAL MATERIEL CORPORATION claims proprietary right in the material disclosed hereon. This drawing is issued in confidence for engineering information only and may not be reproduced or used for manufacture or any other purpose without permission from THE TECHNICAL MATERIEL CORPORATION to the user. This drawing is loaned for mutual assistance and is subject to recall at any time.

Property of:
 THE TECHNICAL MATERIEL CORPORATION
 MAMARONECK, NEW YORK

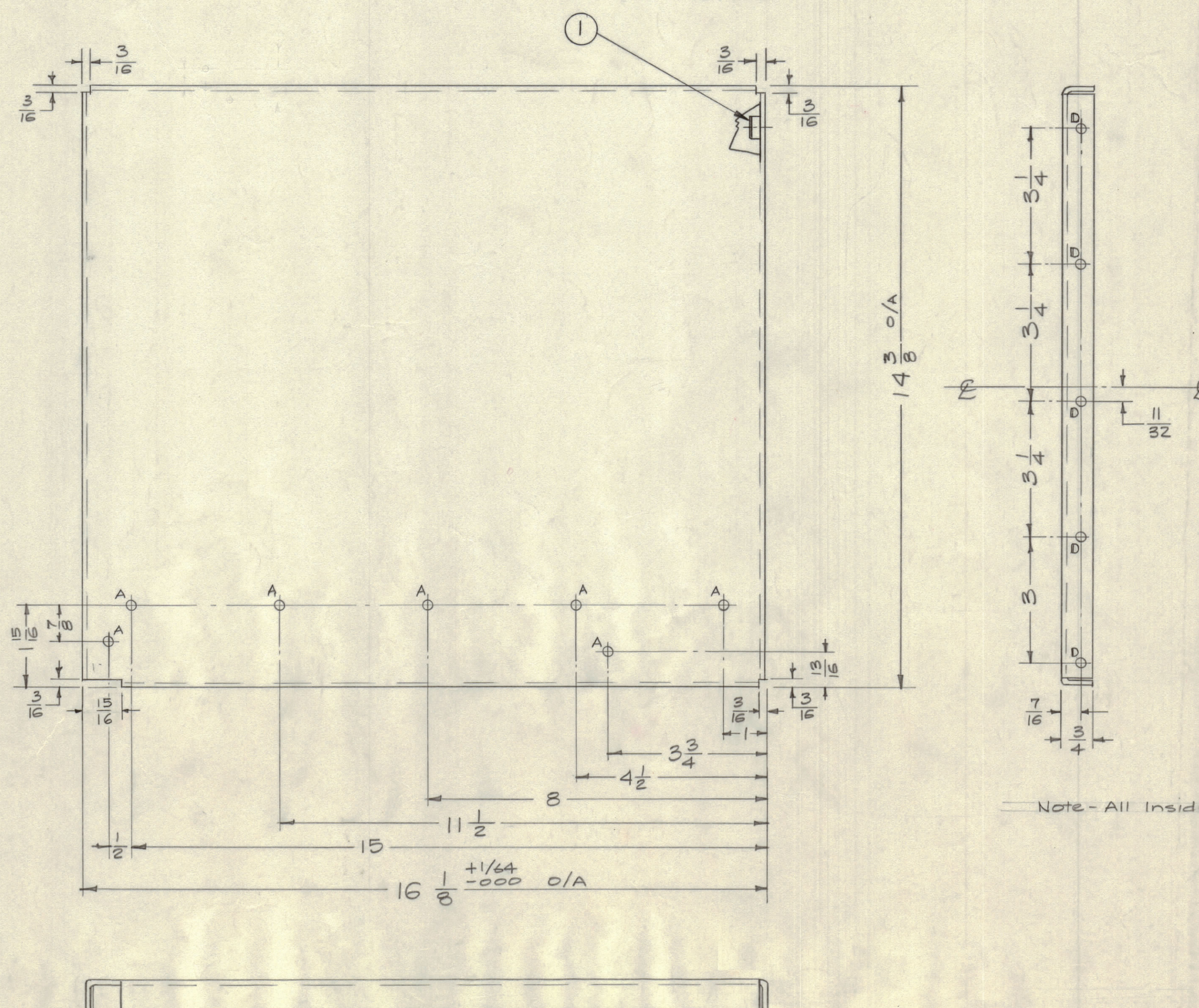
A - $\frac{13}{64}$ (.203) D. 11 REQ.



D - .253-.250 DIA. 5 REQ.



MOUNT IN ALL "D" HOLES AS SHOWN AFTER FINISH



Note - All Inside Bend Radii to be 1/8 R.

B	1	5(D) HOLES WERE A HOLES	3-10-61	4383	RU		
A	1	15/16 DIM. WAS 13/16 DIM.	9-14-60	2956	CA		
ISSUE	ITEM	CHANGED FROM	DATE	CN. NO.	DRAFTER	CHECKER	ENG. APP.
TOLERANCES		SCALE: 1/2" = 1" DON'T SCALE					
ALL OTHERS	DEC. DIM. $\pm 1/64$	DRILL, PUNCH, COMMERCIAL STOCK SIZES AND MANUFACTURERS TOLERANCES ARE NOT INCLUDED.					
	FRAC. DIM. $\pm 1/64$						
	ANGULAR DIM. \pm						

1	PS-5	PAL-1K		6-11-59
REQ. PER UNIT	MODEL	PROJECT NO.	ASSY. NO.	DATE
USED ON				

5	1	NT-129-1032-4	NUT ROUND, SWAGE TYPE	D
REQ. ITEM	PART NO.	DESCRIPTION		
	1/8 THK.	THE TECHNICAL MATERIEL CORP. MAMARONECK, NEW YORK		
STOCK SIZE				
Aluminum		SIDEPLATE, LEFT		
MATERIAL	WEIGHT PER PC.	(PS-5)		
5052-H32		164/11/59		
TYPE & TEMPER		DRAWN	ELC. DES. APP.	MECH. DES. APP.
HEAT TREAT. SPEC.		CHECKED		
5404 IRIDITE		FINAL APPROVAL		
FINISH & SPEC. NO.		MS-1773 B		

MS-1773 B