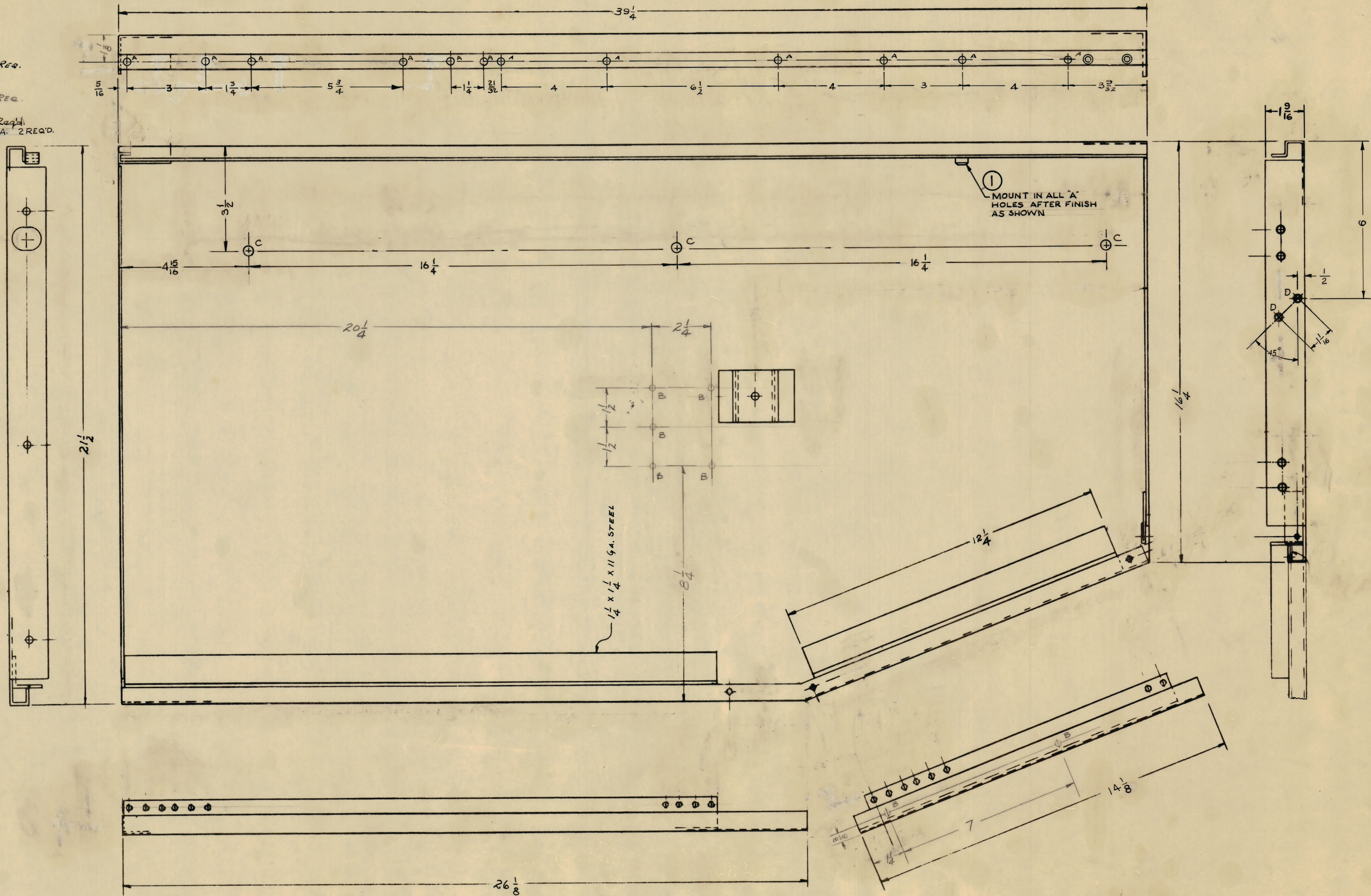


IF IT IS FOUND DESIRABLE TO CHANGE ANY TOLERANCE OR OTHER DETAIL SPECIFIED ON THIS DRAWING NOTIFY THE PURCHASER PROMPTLY.  
 MAXIMUM ALLOWABLE TOLERANCES HAVE BEEN DETERMINED AND DEVIATIONS WILL BE CAUSE FOR REJECTION. REMOVE ALL BURRS AND SHARP EDGES.

- A - .221-.224 DIA. HOLE 12 Req.
- For NT-129-832-4
- B -  $\frac{13}{64}$  (.203) DIA 7 Req.
- C - 3/16 (.187) DIA. 3 Req.
- D - .169 DIA. HOLE, C' SINK 82°-.337 DIA. 2 REQ.



MS-1764 E

ISSUE	ITEM	CHANGED FROM	DATE	CH. NO.	DRAFTS	CHECKER	ENG. APP.
E	2	2 "A" HOLES ADDED 4 "A" HOLES RELOCATED	8-22-64	12194	LB		
D	1	2 "D" HOLES WITH LOCATING DIMENSIONS ADDED TO RIGHT SIDE VIEW	6/17/64	11610	A.M.		
C	2	Dim 19/16 Added right LIP	2-16-64	4188	RL		
B	1	Added (4) "C" holes	1-20-64	1461	J.M.		
A		HOLE DIMENSIONS CLARIFIED	5-3-64				

**NOTICE TO PERSONS RECEIVING THIS DRAWING**  
 THE TECHNICAL MATERIEL CORPORATION claims  
 proprietary right in the material disclosed herein.  
 This drawing is issued in confidence for engineering  
 information only and may not be reproduced or used  
 to manufacture anything shown herein without per-  
 mission from THE TECHNICAL MATERIEL CORPORA-  
 TION to the user. This drawing is loaned for mutual  
 assistance and is subject to recall at any time.  
 Property of:  
 THE TECHNICAL MATERIEL CORPORATION  
 MAMARONECK, NEW YORK

Ref. Modify # MS-1737 AS SHOWN

REQ. NO.	ITEM	PART NO.	DESCRIPTION	SYMBOL
10	1	NT-129-832-4	NUT ROUND, SWAGE TYPE.	"A"
		16 GA.	THE TECHNICAL MATERIEL CORP. MAMARONECK, NEW YORK	
		STEEL	PANEL, RIGHT SIDE	
		MILD		
		TYPE & TEMPER		
		HEAT TREAT. SPEC.		
		FINISH & SPEC. NO.		

NO. PER UNIT	MODEL	PROJECT NO.	ASSY. NO.	DATE
1	RAK-7			