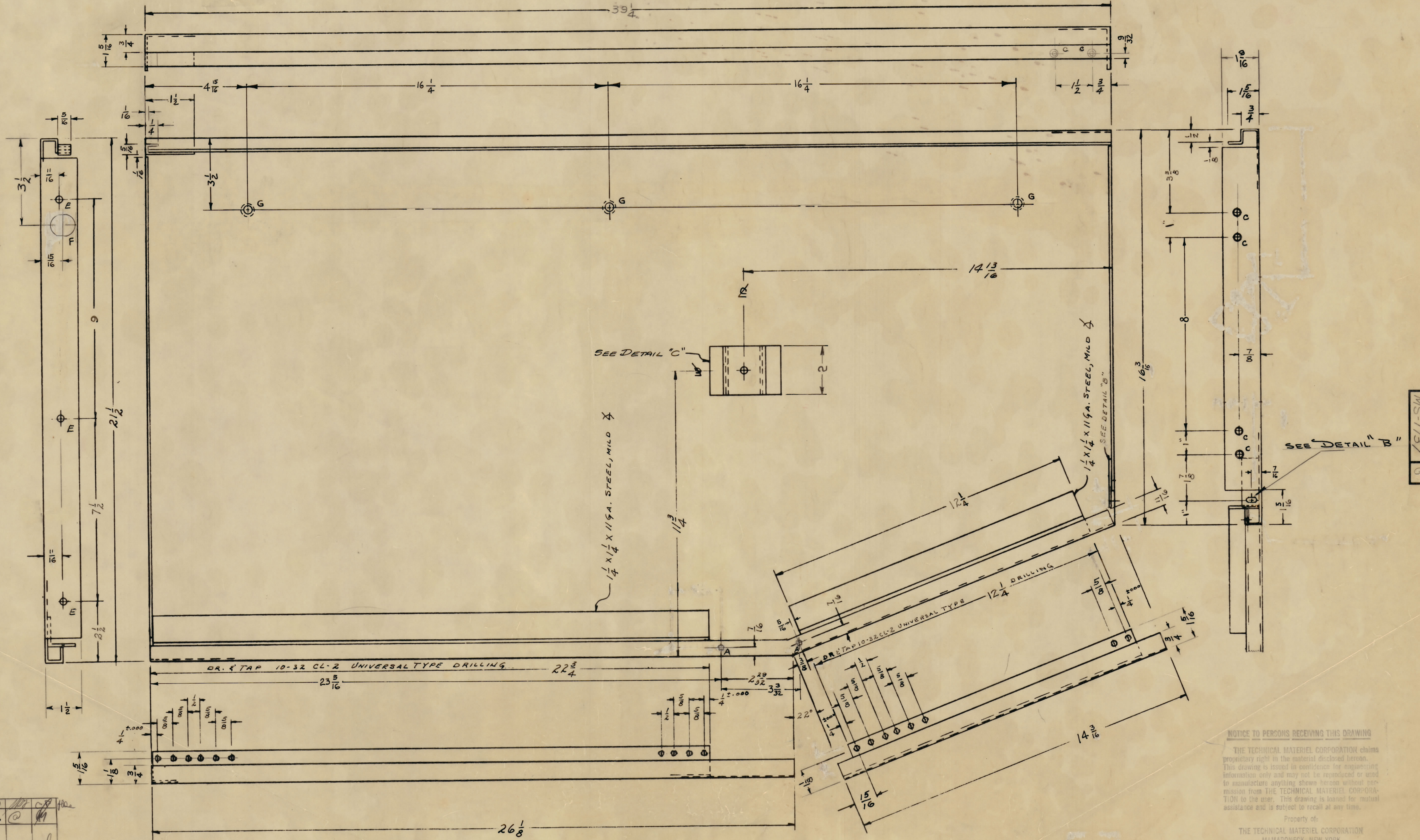


IF IT IS FOUND DESIRABLE TO CHANGE ANY TOLERANCE OR OTHER DETAIL SPECIFIED ON THIS DRAWING NOTIFY THE PURCHASER PROMPTLY.
 MAXIMUM ALLOWABLE TOLERANCES HAVE BEEN DETERMINED AND DEVIATIONS WILL BE CAUSE FOR REJECTION. REMOVE ALL BURRS AND SHARP EDGES.

- A - DRILL TAP 8-32 2 REQ.
- C - C-SINK 8-32 F.H.S. 6 REQ.
- E - 1/4 (.250) DIA. HOLE 3 REQ.
- F - 7/8 X 1-1/16 SLOT 1 REQ.
- G - .144 DIA CSK 82° X .284 3 REQ.



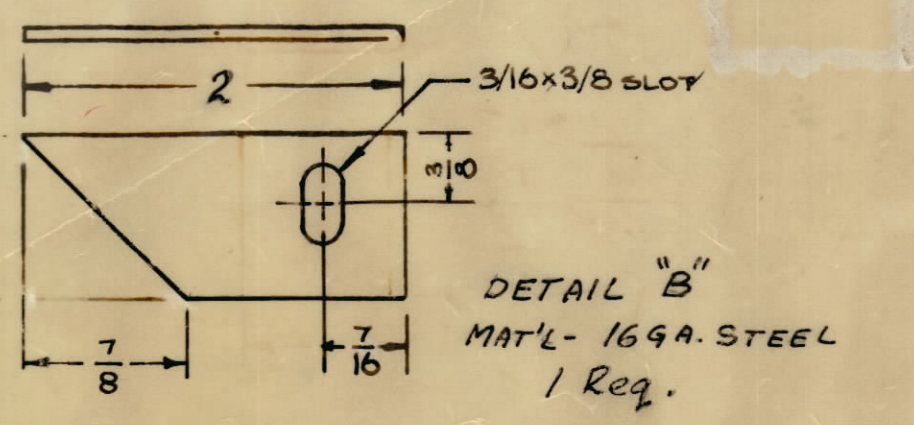
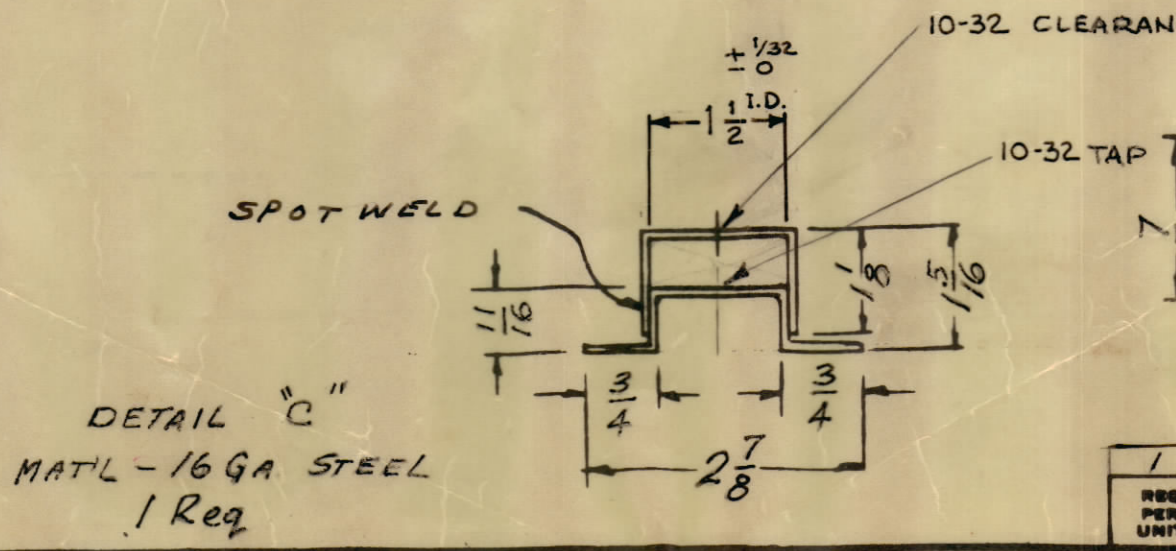
NOTICE TO PERSONS RECEIVING THIS DRAWING

THE TECHNICAL MATERIEL CORPORATION claims proprietary right in the material disclosed herein. This drawing is issued in confidence for engineering information only and may not be reproduced or used to manufacture anything shown herein without permission from THE TECHNICAL MATERIEL CORPORATION to the user. This drawing is loaned for mutual assistance and is subject to recall at any time.

Property of:
 THE TECHNICAL MATERIEL CORPORATION
 MAMARONECK, NEW YORK

G	3371, SH4 DELETED 3370 WAS 3370	7.20.67	18421	WHD			
F	3° G° HOLES ADDED ON DETAIL 'C' 1/2 DIA WAS 15/8	11.11.64	12900	WHD			
E	2° C° 1/4" HOLE DELETED C° HOLES WAS 8 REQ'D A° HOLES WAS 3 REQ'D ON DET. 'C' CLEAR TAP WAS 8-32 ON DET. 'B' 1/8 CUTOUT ADD. 2. DETAIL 'A' DELETED DIMS. UPDATED	6.19.64	11545	WHD			
D	3 TWO 'A' HOLES ADDED 2 TWO 'B' HOLES DELETED 1 'F' HOLE RELOCATED	3.23.60	1924	WHD			
C	F WAS 7/8 (.875) DIA. HOLE DELETED (D) SW (.187) DIA. HOLE TO WAS QUANTITY (6) A WAS QUANTITY (2) DRILL TAP 10-32 CL-2 DRILL TAP 10-32 CL-2 HOLE DIMENSIONS & CLEARANCE	10/20/59	461	WHD			
B	12-1/4 WAS 12-1/2	8-3-59		WHD			
A		10/15/59		WHD			
ISSUE	ITEM	CHANGED FROM	DATE	CH. NO.	DRAFTS	CHECKER	ENG. APP.
TOLERANCES		SCALE: 1" = 1"					
ALL	DEC. DIM. ± 1/64	DRILL PUNCH, COMMERCIAL STOCK					
OTHERS	ANGULAR DIM. ± 5°	BISS AND MANUFACTURERS TOLERANCES ARE NOT INCLUDED.					

SPOT WELD, ALL JOINING PIECES, SECURELY.
 REMOVE BURRS & SHARP EDGES.



1	CONSOLE	PROJECT NO.	ASSY. NO.	DATE
REQ. PER UNIT	USED ON			

REQ. ITEM	PART NO.	DESCRIPTION	SYMBOL
16 GA.		THE TECHNICAL MATERIEL CORP.	
STEEL		MAMARONECK, NEW YORK	
MATERIAL		RIGHT SIDE, OUTSIDE	
MILD			
TYPE & TEMPER			
HEAT TREAT SPEC.			
5520 BLU/GRY TEX VINYL FINISH & SPEC. NO.			
			MS-1737 G

MS-1737 G