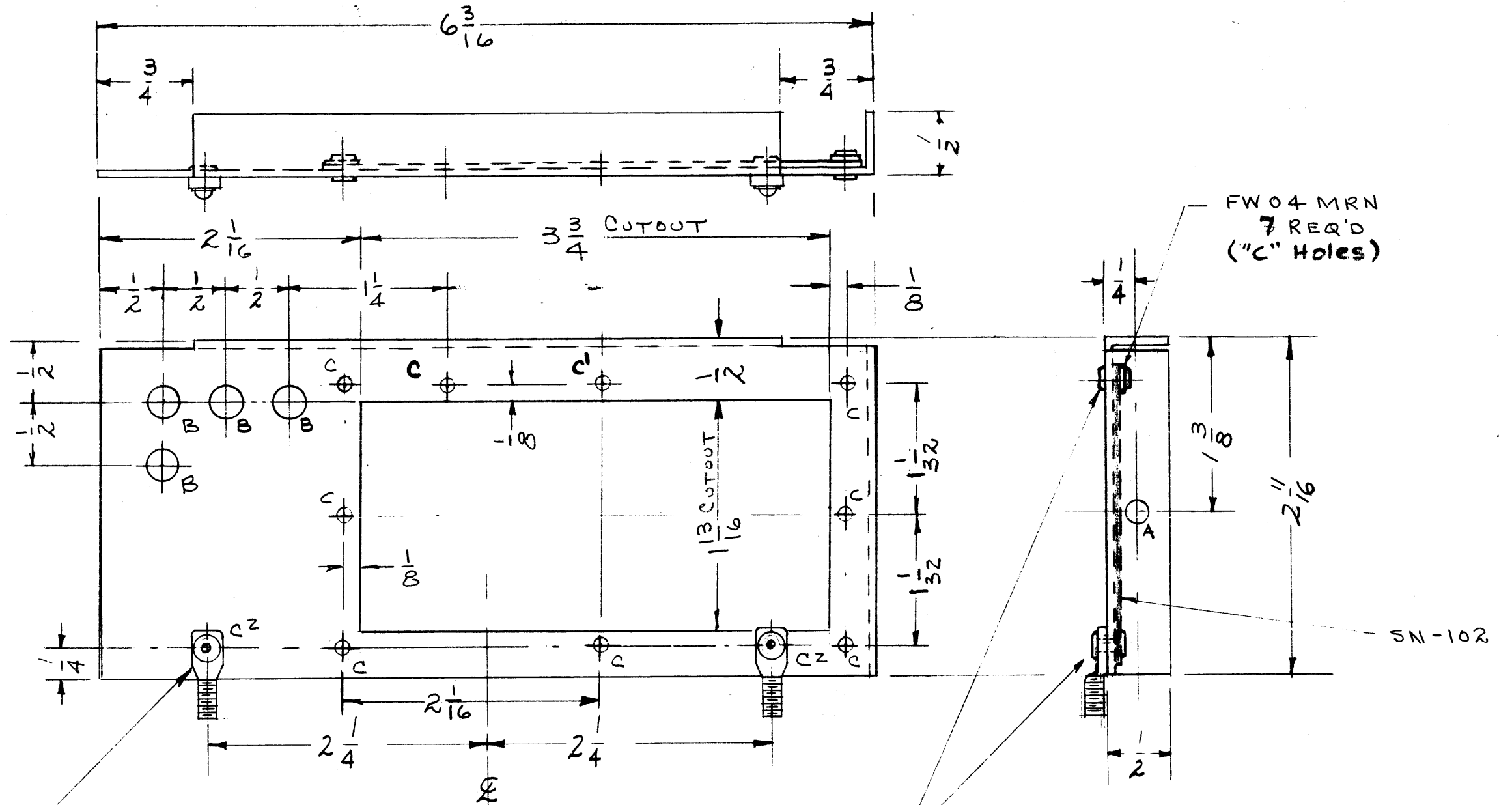


MS-1694 B

A - 3/16 (.187) DIA. 1 REQ'D  
 B - 1/4 (.25) " 4 "  
 C - 1/8 (.125) " 11 "

C1 - Do Not Rivet  
 C2 - SC-107-1



SC-107-1  
 2 - REQ'D  
 ("C2" HOLES)

NOTICE TO PERSONS RECEIVING THIS DRAWING

THE TECHNICAL MATERIEL CORPORATION claims proprietary right in the material disclosed hereon. This drawing is issued in confidence for engineering information only and may not be reproduced or used to manufacture anything shown hereon without permission from THE TECHNICAL MATERIEL CORPORATION to the user. This drawing is loaned for mutual assistance and is subject to recall at any time.

Property of:  
 THE TECHNICAL MATERIEL CORPORATION  
 MAMARONECK, NEW YORK

REQ. ITEM	PART NO.	DESCRIPTION	SYMBOL
1	4	SN-102	SCREEN, VENT
8	3	EY-100-2	EYELET
2	2	SC-107-1	BOLT, SPADE, OFFSET TYPE
7	1	FW04MRN	FLAT WASHER

.064		THE TECHNICAL MATERIEL CORP.	
STOCK SIZE		MAMARONECK, NEW YORK	
ALUMINUM		TUBE CHASSIS SHIELD BRACKET	
MATERIAL			
5052-H32		IRIDITE	
TYPE & TEMPER	HEAT TREAT. SPEC.	DRAWN	CHECKED
5404 IRIDITE		ATB	
FINISH & SPEC. NO.		ELEC. DES. APP.	MECH. DES. APP.
			MS-1694 B

ISSUE	ITEM	CHANGED FROM	DATE	CH. NO.	DRAFTS	CHECKER	ENG. APP.
B	2	ONE "C" HOLE WAS "C1" HOLE IT WAS 9 REQ'D	11.10.64	12892			
A	1	"B" HOLES REARR'G'D ADDED CUT OUT "C" HOLES SN-102	8/29/59	1203	usc	H	

TOLERANCES: DEC. DIM. ±, FRAC. DIM. ±, ANGULAR DIM. ±

SCALE: MAXIMUM ALLOWABLE TOLERANCES HAVE BEEN DETERMINED AND ANY DEVIATIONS WILL BE CAUSE FOR REJECTION. REMOVE ALL BURRS AND SHARP EDGES

REQ. PER UNIT	MODEL	PROJECT NO.	ASS'Y. NO.	DATE
1	RFC-1	PAL-1K		11-22-60
	RFD-1	GPI-10K		6-23-59
	RFB-1			3-26-59

USED ON