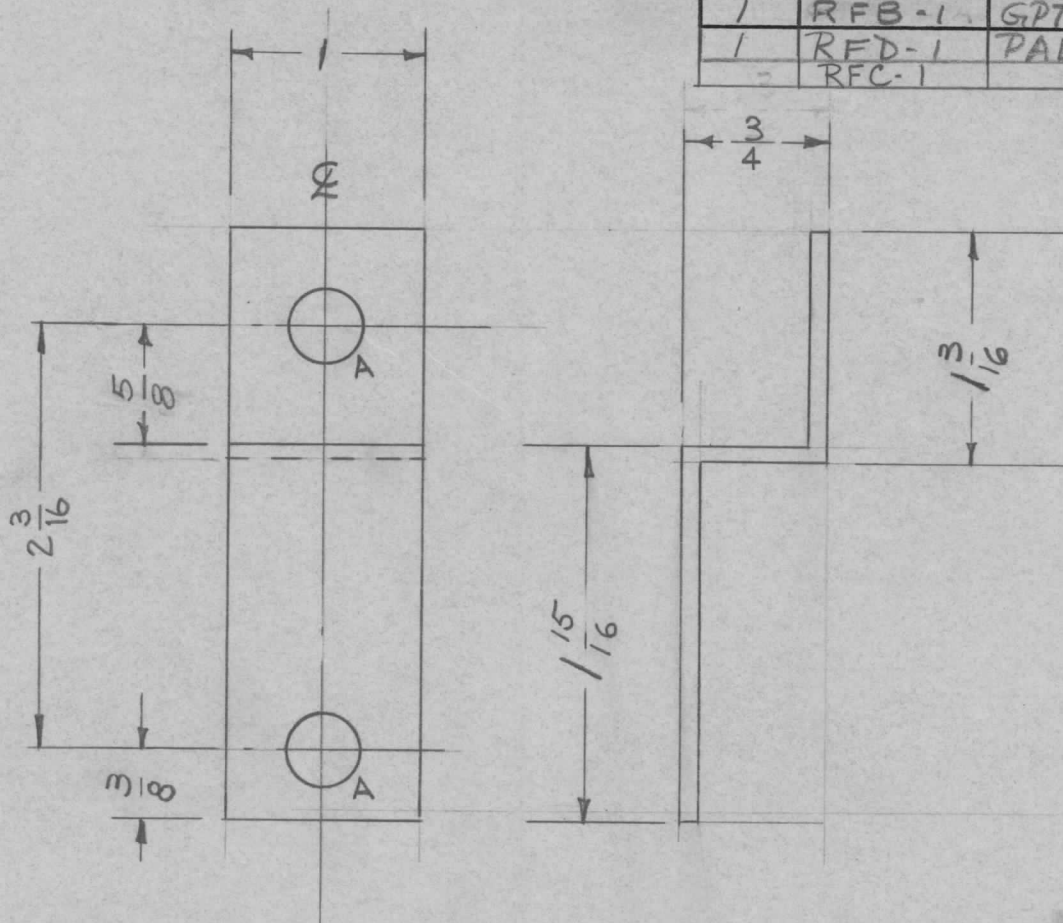


REQ. PER. UNIT	USED ON			MS-1688	A
	MODEL	ASS'Y. NO.	DATE		
1	RFB-1	GPT10K			
1	RFD-1	PAL-1K	6-23-59		
	RFC-1		11-22-60		



A - 3/8 (.375) 2 REQ'D.

UNLESS OTHERWISE SPECIFIED DIMENSIONS ARE IN INCHES AND INCLUDE CHEMICALLY APPLIED OR PLATED FINISHES	
DECIMALS .X ± .05 .XX ± .01 .XXX ± .005	FRACTIONS ± 1/64 ANGLES ± 0° 30'

CUT HERE
GUARANTEED
2-66

REQ.	ITEM	PART NO.	DESCRIPTION	SYMBOL						
		.081	THE TECHNICAL MATERIEL CORP.							
		STOCK SIZE	MAMARONECK, NEW YORK							
A	1	ALUMINUM	SHAFT SUPPORT BRACKET							
ISSUE	ITEM	CHANGED FROM	DATE	CH. NO.	DRAFTS	CHECKER	ENG. APP.			
		Dim 2 3/16 added	12-19-62	1624	JDH	16	ARB			
TOLERANCES		SCALE:								
DEC. DIM. ±		MAXIMUM ALLOWABLE TOLERANCES HAVE								
FRAC. DIM. ±		BEEN DETERMINED AND ANY DEVIATIONS								
ANGULAR DIM. ±		WILL BE CAUSE FOR REJECTION.								
		REMOVE ALL BURRS AND SHARP EDGES								
		5052-H32	TYPE & TEMPER		HEAT TREAT. SPEC.		DRAWN		CHECKED	
			404 - IRIDITE				ATB		ARB	
		FINISH & SPEC. NO.		ELEC. DES. APP		MECH. DES. APP		MS-1688		A