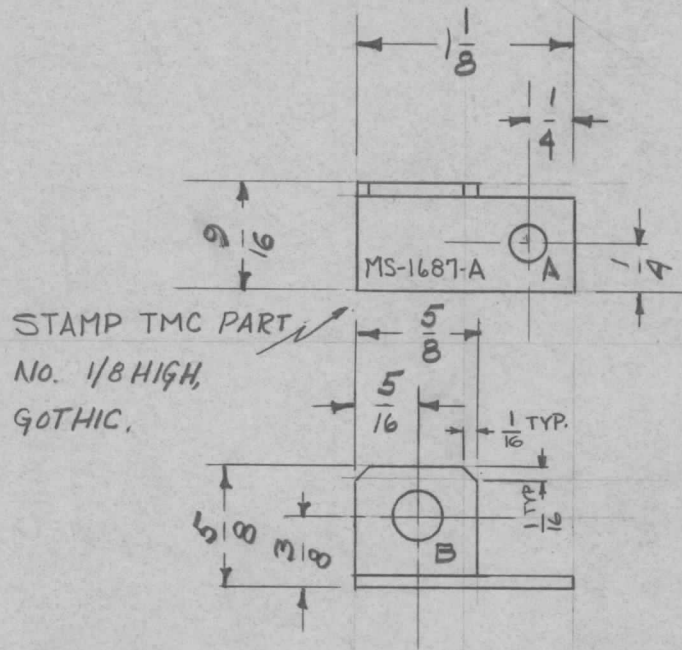


REQ. PER. UNIT	USED ON			MS-1687	A
	MODEL	ASS'Y. NO.	DATE		
1	RFB-1	GPT-10K			
1	RFD-1	PAL-1K	6-23-59		
	RFC-1		11-22-60		

A - 3/16 (.187) DIA. 1  
 B - 1/4 (.25) DIA. 1



UNLESS OTHERWISE SPECIFIED  
 DIMENSIONS ARE IN INCHES AND INCLUDE  
 CHEMICALLY APPLIED OR PLATED FINISHES

DECIMALS	FRACTIONS
.X ± .05	± 1/64
.XX ± .01	ANGLES
.XXX ± .005	± 0° 30'

TOLERANCES

CUT HERE  
 GUARANTEED  
 2-66

ISSUE	ITEM	CHANGED FROM	DATE	CH. NO.	DRAFTS	CHECKER	ENG. APP.	REQ. ITEM	PART NO.	DESCRIPTION	SYMBOL	
									.064	THE TECHNICAL MATERIEL CORP.		
									STOCK SIZE	MAMARONECK, NEW YORK		
Δ	1	1/16 TYP. DIM. ADDED	10-12-62	7416					ALUMINUM	RF CHOKE MTG. BRKT		
									MATERIAL			
TOLERANCES			SCALE:					5052-H32		DRILL		
DEC. DIM. ±			MAXIMUM ALLOWABLE TOLERANCES HAVE BEEN DETERMINED AND ANY DEVIATIONS WILL BE CAUSE FOR REJECTION. REMOVE ALL BURRS AND SHARP EDGES					TYPE & TEMPER	HEAT TREAT. SPEC.	DRAWN	CHECKED	FINAL APPROVAL
FRAC. DIM. ±								5404 IRIDITE		ATB		
ANGULAR DIM. ±								FINISH & SPEC. NO.		ELEC. DES. APP	MECH. DES. APP	MS-1687