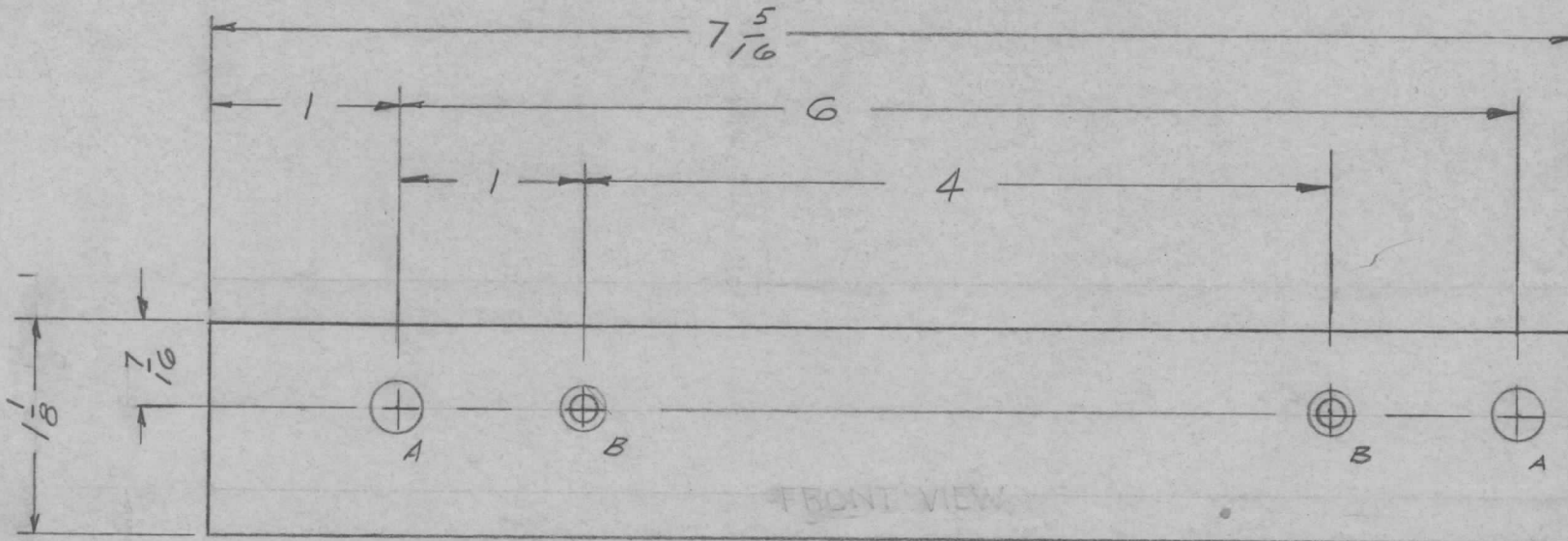


A -  $\frac{9}{32}$  (.281) DIA. HOLE 2 REQ.

B - C'SINK FOR 6-32 F.H.S 2 REQ.

REQ. PER. UNIT	USED ON			MS-1680	D
	MODEL	ASS'Y. NO.	DATE		
1	GPT-10KW		3-23-59		



FRONT VIEW SHOWN

METAL STAMP TMC  
PART NO. MS-1680-D  
 $\frac{1}{8}$  HIGH GOTHIC ON REAR  
OF BRACKET.

FINISH NOTE :

- 1- S-404-YELL-IRIDITE
- 2- S-115 TMC GRAY (FRONT & EDGES ONLY)
- 3- FRONT AND EDGES ONLY

D	1	FINISH - S115 WAS S-220, RCAF BLUE GRAY	12-7-62	7810	<i>[Signature]</i>	<i>[Signature]</i>	REQ.	ITEM	PART NO.	DESCRIPTION	SYMBOL					
C	1	ADDED FRONT VIEW TO PICTORIAL & NOTE #3	6-29-62	6844	R.T.	<i>[Signature]</i>	48			THE TECHNICAL MATERIEL CORP. MAMARONECK, NEW YORK SHIM, LEFT SIDE BRACKET FRONT WINDOW						
B	1	FINISH NOTE ADDED	10/26/60	3291	<i>[Signature]</i>	<i>[Signature]</i>	ALUMINUM									
A	1	S404-YEL-IRIDITE WAS S101 CAUSTIC DIP	12-59	1001	<i>[Signature]</i>	EMN	5052-H32									
ISSUE	ITEM	CHANGED FROM	DATE	CH. NO.	DRAFTS	CHECKER	ENG. APP.	TYPE & TEMPER		HEAT TREAT. SPEC.	DRAWN	CHECKED	FINAL APPROVAL			
TOLERANCES			SCALE: <i>cto</i>				SEE FINISH NOTE		FINISH & SPEC. NO.		ELEC. DES. APP.	MECH. DES. APP.	MS-1680	D		
DEC. DIM. $\pm$			MAXIMUM ALLOWABLE TOLERANCES HAVE BEEN DETERMINED AND ANY DEVIATIONS WILL BE CAUSE FOR REJECTION. REMOVE ALL BURRS AND SHARP EDGES				DRAWN		HEAT TREAT. SPEC.		MECH. DES. APP.		FINAL APPROVAL			
FRAC. DIM. $\pm$ $\frac{1}{64}$							5052-H32		DRAWN		HEAT TREAT. SPEC.		MECH. DES. APP.		FINAL APPROVAL	
ANGULAR DIM. $\pm$							5052-H32		DRAWN		HEAT TREAT. SPEC.		MECH. DES. APP.		FINAL APPROVAL	