

A - $\frac{3}{32}$ (.281) DIA. HOLE

2 REQ.

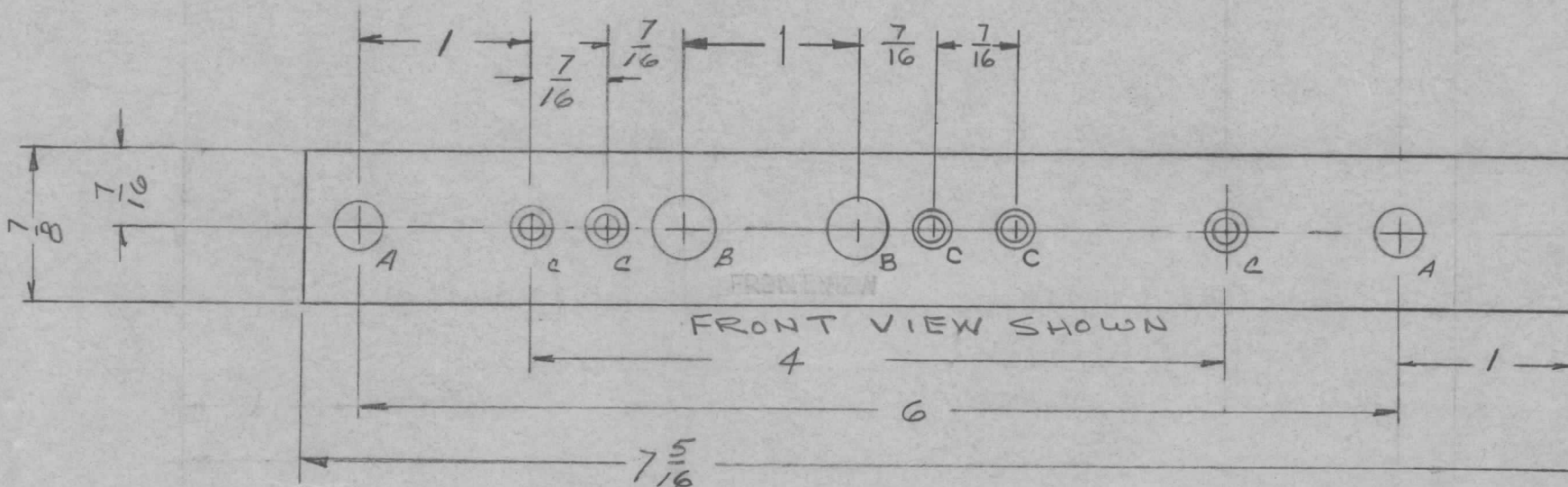
B - $\frac{3}{16}$ (.375) DIA. HOLE

2 REQ.

C - C'SINK FOR 6-32 F.H.S.

5 REQ.

REQ. PER. UNIT	USED ON			MS-1679	E
	MODEL	ASS'Y. NO.	DATE		
1	GPT-10KW	FRONT WIND.	3-23-59		



FINISH NOTE

S 404 YELLOW IRIDITE
 S-115 TMC GRAY (FRONT & EDGES ONLY)
 AND EDGES ONLY

E		ADDED FRONT VIEW TO PICTORIAL & FINISH NOTE	6-29-62	6844	R.T.	<i>Jde</i>	<i>MB</i>
D	1	S115 - TMC Gray added to finish.	1-17-60	3944	RU	<i>JCS</i>	<i>MB</i>
C	1	ØB & 2ØC Holes Added	12-21-60	3770	RU	<i>JCS</i>	<i>MB</i>
B	1	S404 - IRIDITE WAS S101 - CAUSTIC DIP	12-8-59	1001	P	<i>JCS</i>	<i>EMN</i>
A	1	1" WAS 5/16	3/25/59		<i>see</i>	<i>Jde</i>	<i>MB</i>

ISSUE	ITEM	CHANGED FROM	DATE	CH. NO.	DRAFTS	CHECKER	ENG. APP.
TOLERANCES		SCALE: <i>1/16</i>					
DEC. DIM. ±		MAXIMUM ALLOWABLE TOLERANCES HAVE BEEN DETERMINED AND ANY DEVIATIONS WILL BE CAUSE FOR REJECTION. REMOVE ALL BURRS AND SHARP EDGES					
FRAC. DIM. ± 1/64							
ANGULAR DIM. ±							

REQ.	ITEM	PART NO.	DESCRIPTION	SYMBOL
	1/8		THE TECHNICAL MATERIEL CORP. MAMARONECK, NEW YORK	
STOCK SIZE		SHIM, RIGHT SIDE BRACKET, FRONT WINDOW.		
MATERIAL		ALUMINUM		
5052-H32			<i>see</i>	<i>Jde</i>
TYPE & TEMPER	HEAT TREAT. SPEC.	DRAWN	CHECKED	FINAL APPROVAL
SEE NOTE			<i>MB</i>	<i>MB</i>
FINISH & SPEC. NO.		ELEC. DES. APP.	MECH. DES. APP.	
			<i>MB</i>	MS-1679 E