

IF IT IS FOUND DESIRABLE TO CHANGE ANY TOLERANCE OR OTHER DETAIL SPECIFIED ON THIS DRAWING NOTIFY THE PURCHASER PROMPTLY.
 MAXIMUM ALLOWABLE TOLERANCES HAVE BEEN DETERMINED AND DEVIATIONS WILL BE CAUSE FOR REJECTION. REMOVE ALL BURRS AND SHARP EDGES.

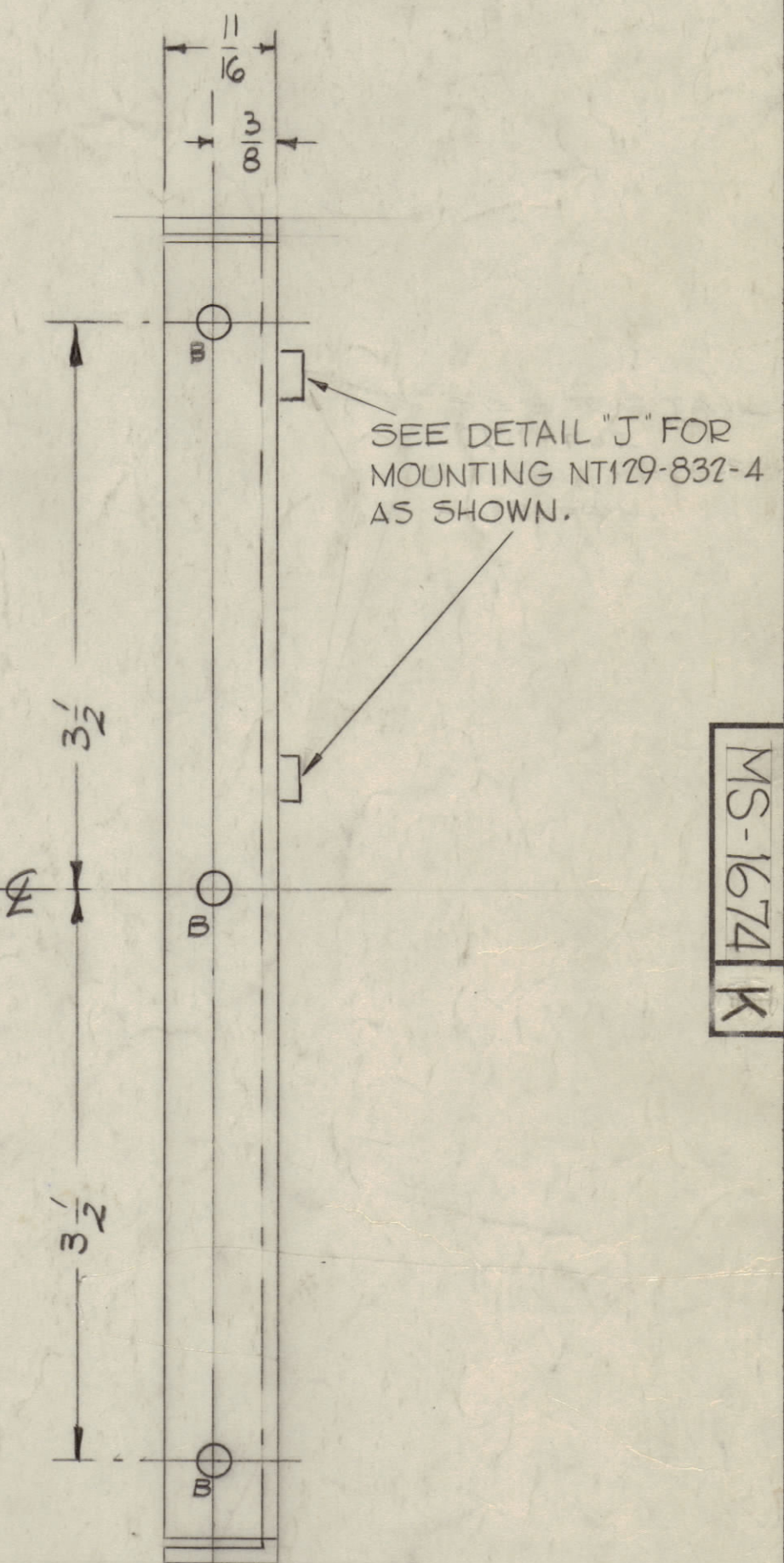
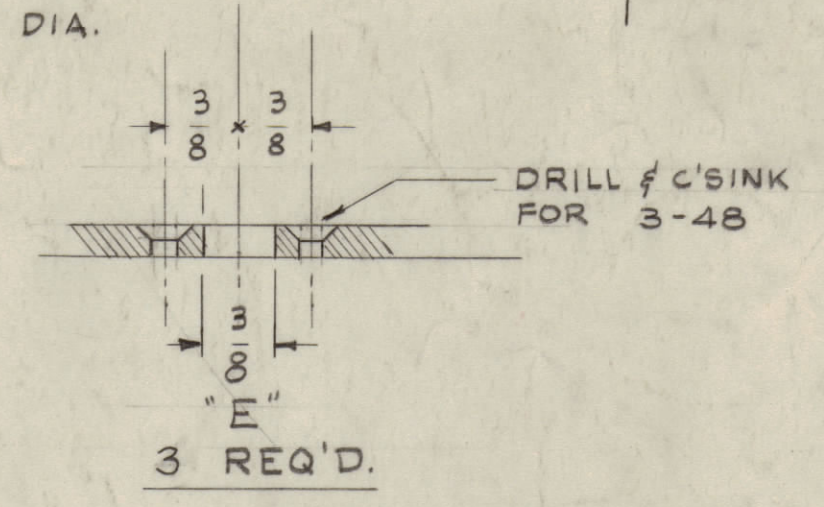
NOTICE TO PERSONS RECEIVING THIS DRAWING

THE TECHNICAL MATERIEL CORPORATION claims proprietary right in the drawings disclosed herein. This drawing is issued for engineering information only and is not to be reproduced or used to manufacture any part or assembly without permission from THE TECHNICAL MATERIEL CORPORATION to the user. It is loaned for mutual assistance and is not to be called at any time.

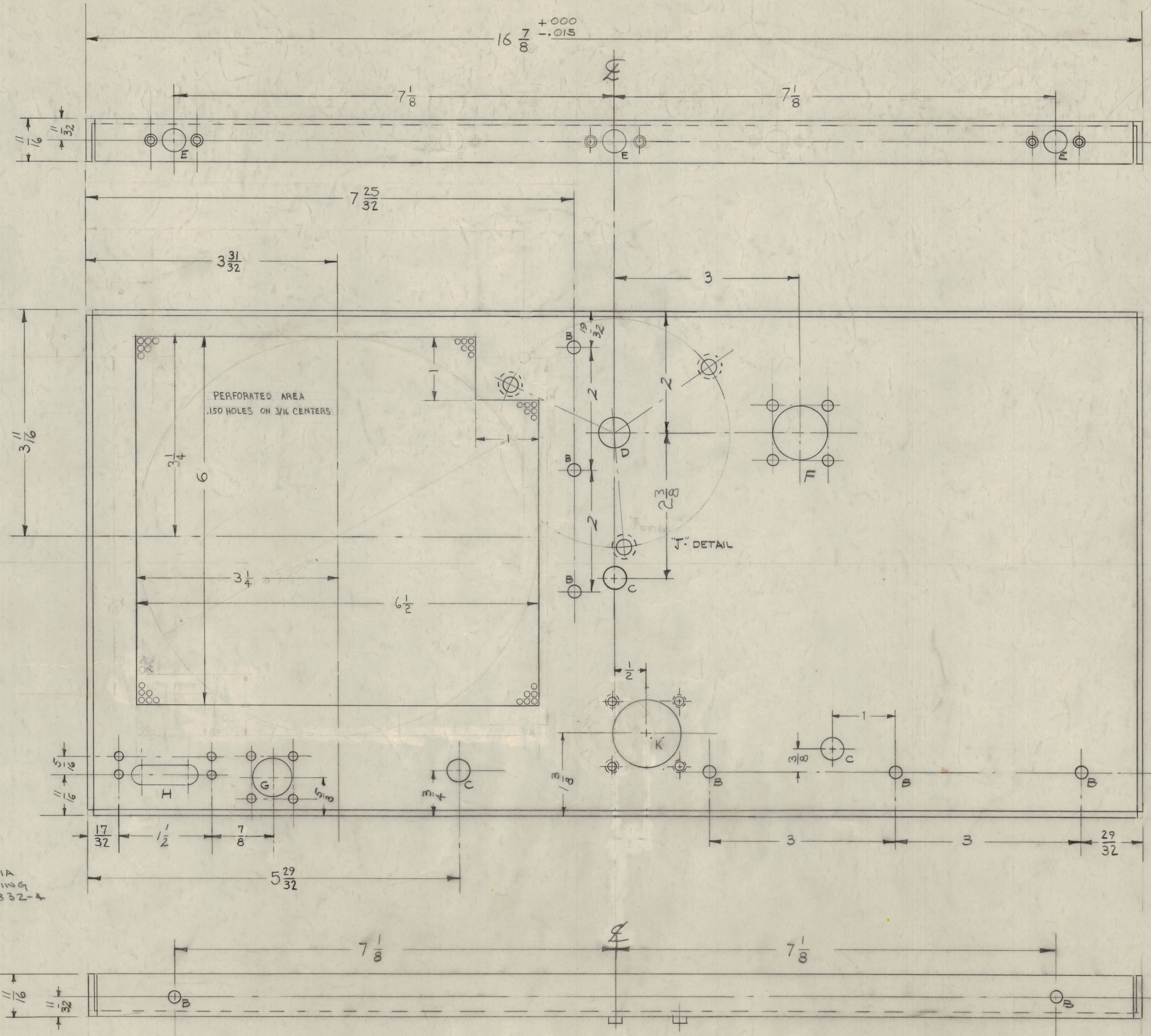
Property of:
 THE TECHNICAL MATERIEL CORPORATION
 MAMARONECK, NEW YORK

- A - DELETED
- B - 13/64 DIA
- C - 3/8 DIA.
- D - 1/2 DIA.

- 14
- 3
- 1



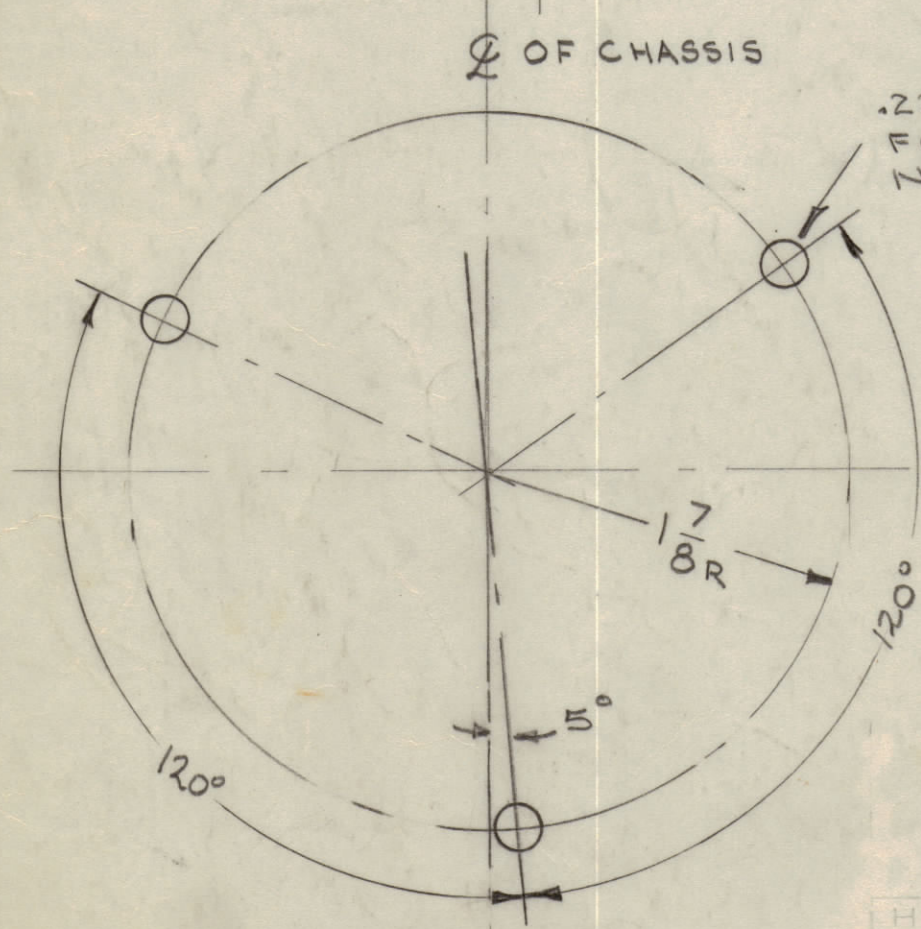
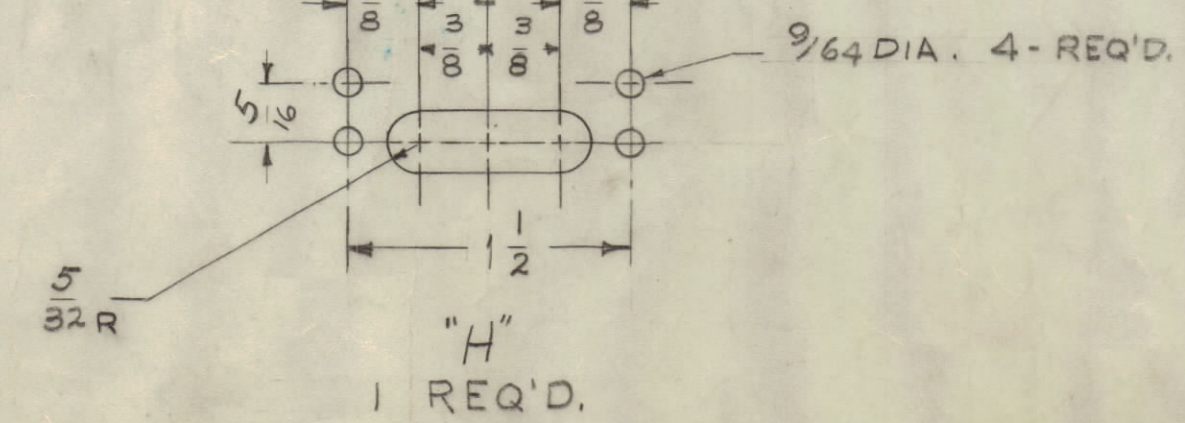
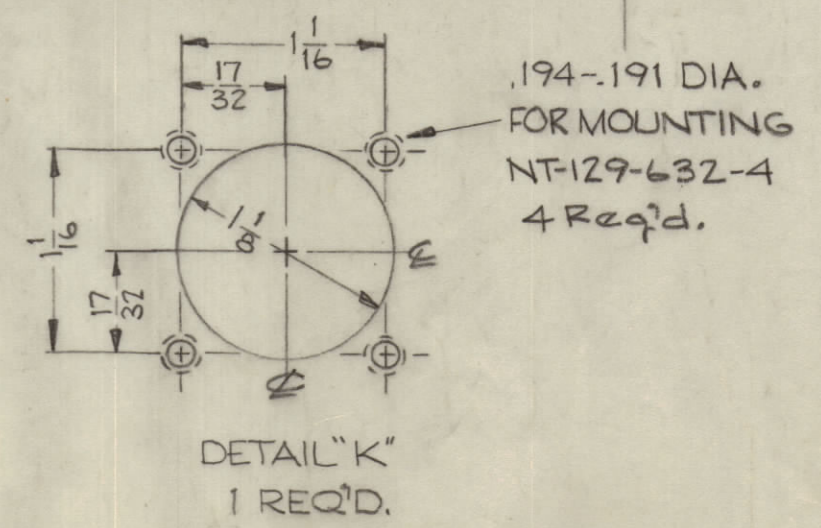
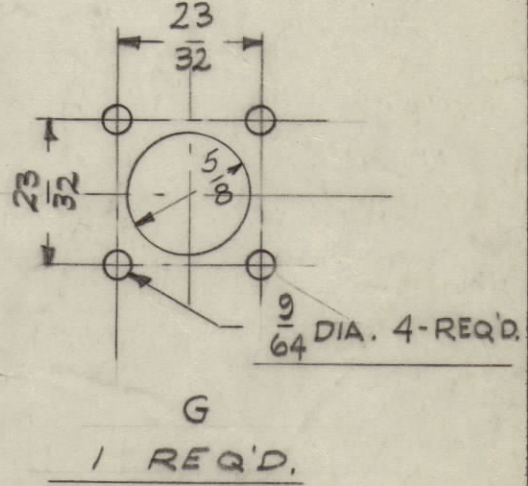
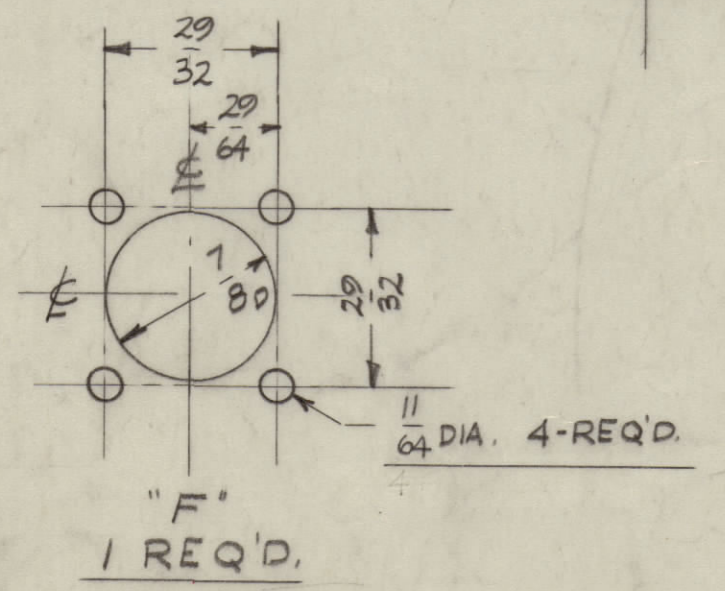
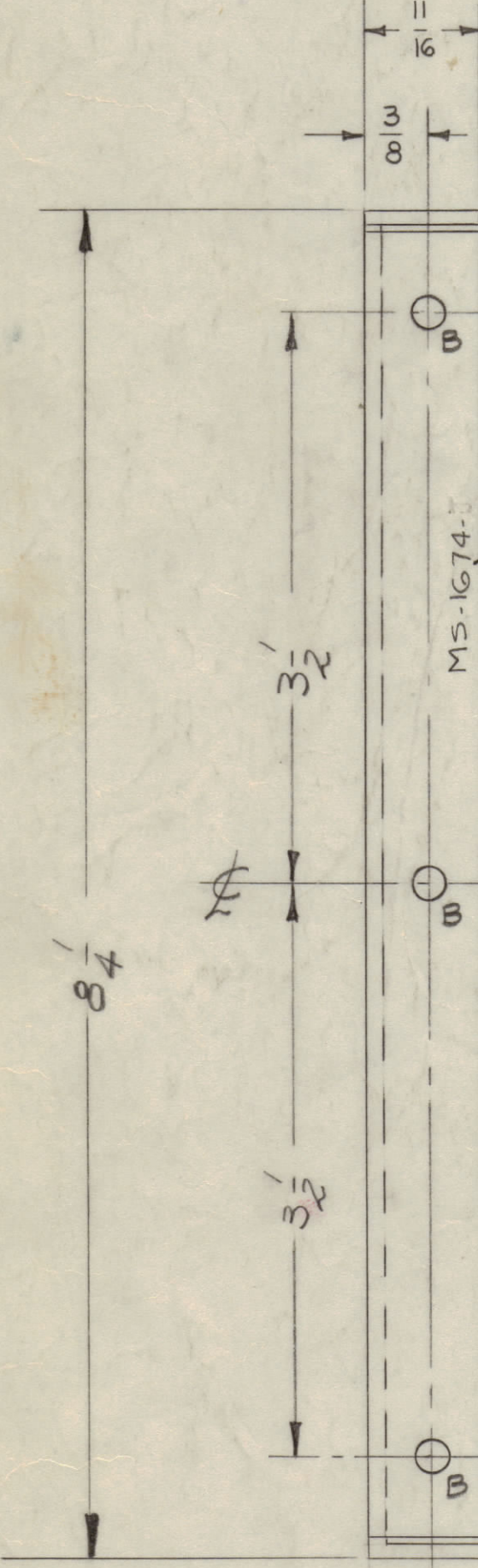
MS-1674 K



METAL STAMP TMC
 PART NO. 1/8 HIGH
 GOTHIC, WITH LATEST
 REVISION LETTER

PERFORATED AREA
 .150 HOLES ON 3/16 CENTERS

"J" DETAIL



.221-.224 DIA
 FOR MOUNTING
 NT-129-832-4

ISSUE	ITEM	CHANGED FROM	DATE	BY	CHKD	ENG. APP.
K	1	ON PICTORIAL - 4 HOLES DIMS. 17/32 WAS 13/32 1/8 WAS 1/16	7-21-44	11898		
J	1	ON 'K' DETAIL (2) MTS. HOLES RELOCATED (ERROR)	3-1-43	8335		

SCALE: DRILL PUNCH COMMERCIAL STOCK SIZES AND MANUFACTURERS TOLERANCES ARE NOT INCLUDED.

REF: LD-526		R. KOHN	DESCRIPTION	SYMBOL	
REQ. ITEM	PART NO.	THE TECHNICAL MATERIEL CORP. MAMARONECK, NEW YORK			
.081		REAR PLATE			
ALUMINUM		MATERIAL WEIGHT PER FC.			
5052-H32		TYPE & TEMPER			
		HEAT TREAT. SPEC.			
		FINISH & SPEC. NO.			
DRAWN		ELEC. DES. APP.		MECH. DES. APP.	
CHECKED		FINAL APPROVAL		MS-1674 K	