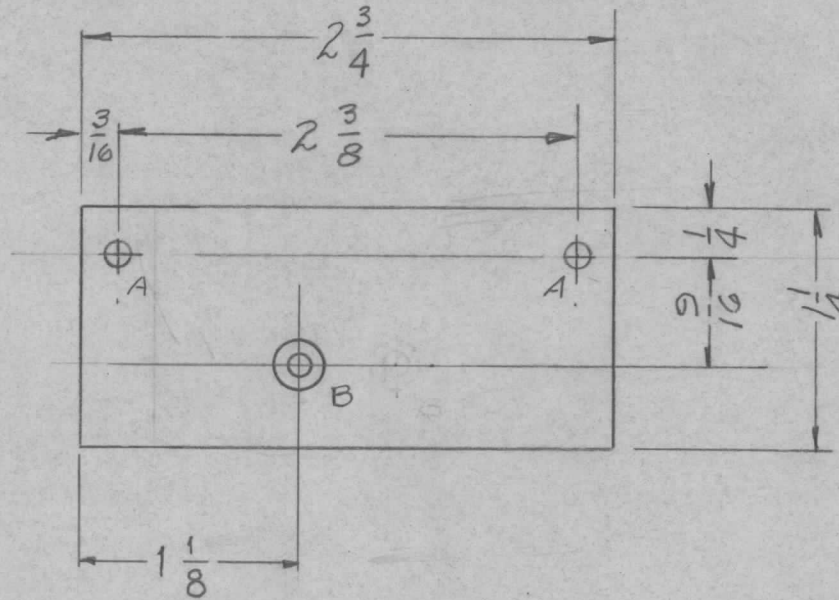


REQ. PER. UNIT	USED ON			MS-1667	A
	MODEL	ASS'Y. NO.	DATE		
1	RFB-1				
	RFC-1		11-22-60		

A- $\frac{11}{64}$ (.171) DIA HOLE 2 REQ.

B- C'SINK FOR 6-32 F.H.S. 1 REQ.



UNLESS OTHERWISE SPECIFIED DIMENSIONS ARE IN INCHES AND INCLUDE CHEMICALLY APPLIED OR PLATED FINISHES			
DECIMALS	TOLERANCES		FRACTIONS
.X ± .05			± 1/64
.XX ± .01			ANGLES
.XXX ± .005			± 0° 30'

CUT HERE
GUARANTEED
2-66

REQ.	ITEM	PART NO.	DESCRIPTION				SYMBOL
		1064	THE TECHNICAL MATERIEL CORP.				
		STOCK SIZE	MAMARONECK, NEW YORK				
		ALUMINUM	PLATE, NEUTRALIZING CAP.				
		MATERIAL					
		5052-H32	ave	WLB	20		
		TYPE & TEMPER	DRAWN	CHECKED	FINAL APPROVAL		
		HEAT TREAT. SPEC.		20B			
		5404 IRIDITE					
		FINISH & SPEC. NO.	ELEC. DES. APP	MECH. DES. APP	MS-1667 A		
ISSUE ITEM		CHANGED FROM	DATE	CH. NO.	DRAFTS	CHECKER	ENG. APP.
A 1		"B" Hole Relocated	6/2/59	1040	JCB	JWB	alb
TOLERANCES			SCALE:				
DEC. DIM. ±			MAXIMUM ALLOWABLE TOLERANCES HAVE BEEN DETERMINED AND ANY DEVIATIONS WILL BE CAUSE FOR REJECTION. REMOVE ALL BURRS AND SHARP EDGES				
FRAC. DIM. ±							
ANGULAR DIM. ±							