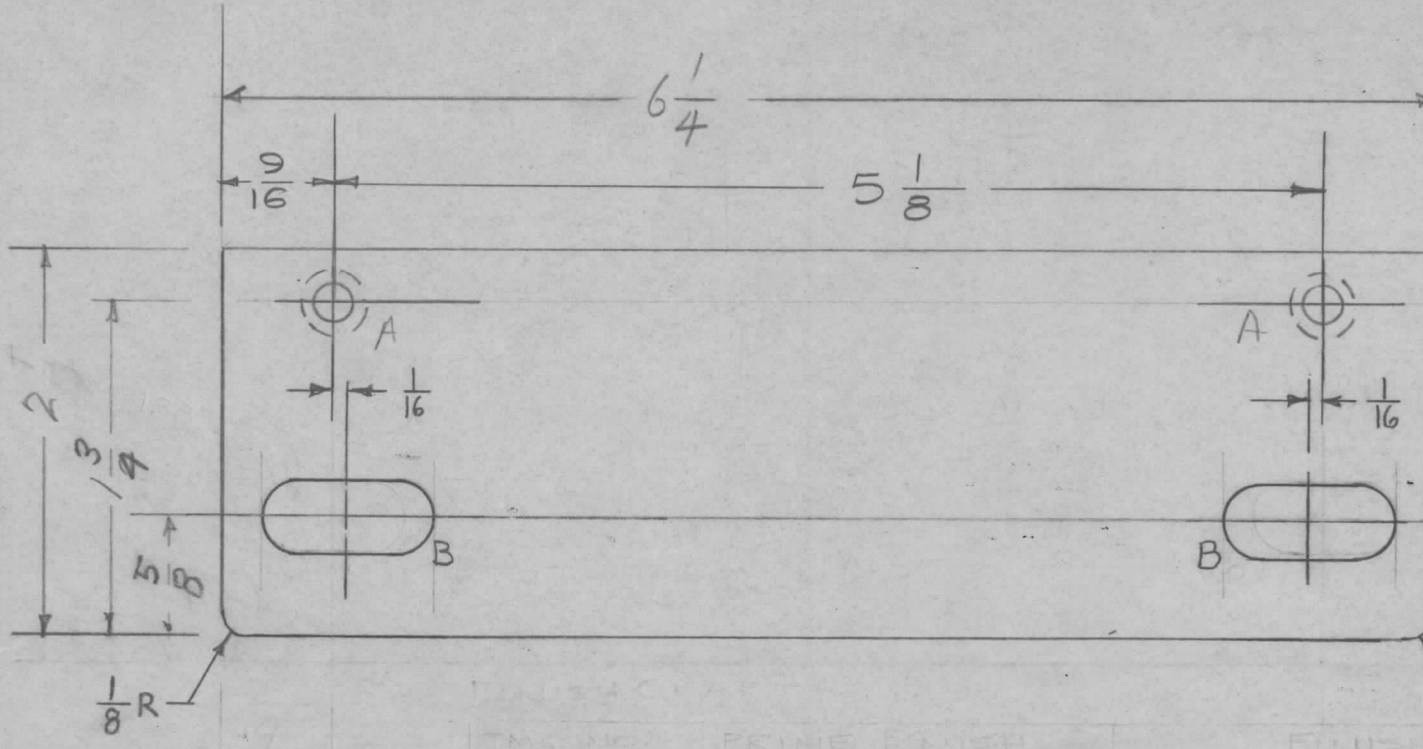


PRIME OR DIP	FINISH
S114 ZINC CHROM.	S520 BLUE-GRAY, TEXTURED ENAMEL

REQ. PER. UNIT	USED ON			MS-1660	G
	MODEL	ASS'Y. NO.	DATE		
2	GPT-10K	AX-166			
2	GPT-40K		3-28-60		

OR PRIME & PAINT PER CUSTOMER SPECIFICATIONS



A-DR & C'SINK FOR 10-32 2REQ.
 B-3/8 X 7/8 SLOT 2"

FINISH
 S404 YELLOW IRON
 S114 ZINC CHROMATE
 S520 ROYAL BLUE-GRAY ENAMEL

G	1	S520 FINISH WAS S220 FIN.	10/14/63	10189		MAP	MSB
	3	S052-H32 DELETED		88			
F	1	STOCK SIZE WAS 1/8 MAP. WAS ALUM.	10/11/60	3212	REL		YEE
E	1	PART N° WAS MS-1660-10R2 Deleted Under Finish added Per Cust. Spec.	5-25-60	2373	DM	file	MSB
D	1	CHART ADDED	5-13-60	2251	CS	JCB	MSB
C	1	"B" WAS 3/8 X 3/4 SLOT ON 5/8 &	3-28-60	-	MSB	file	MSB
B	1	2 REQ PER UNIT WAS 4	3-21-60	1903	MSB	file	MSB
A	1	FINISH CHART ADDED MS-1660-1 WAS MS-1660	4/28/59	1225	16		MSB

REQ. ITEM	PART NO.	DESCRIPTION	SYMBOL
	11 GA	THE TECHNICAL MATERIEL CORP.	
	STOCK SIZE	MAMARONECK, NEW YORK	
	STEEL	PLATE, Door Latch.	
	MATERIAL	TOP, FRONT & REAR	
TYPE & TEMPER	HEAT TREAT. SPEC.	DRAWN	CHECKED
See Chart			
FINISH & SPEC. NO.	ELEC. DES. APP	MECH. DES. APP	
			MS-1660 G

TOLERANCES		SCALE:	
DEC. DIM. ±		MAXIMUM ALLOWABLE TOLERANCES HAVE BEEN DETERMINED AND ANY DEVIATIONS WILL BE CAUSE FOR REJECTION.	
FRAC. DIM. ± 1/64		REMOVE ALL BURRS AND SHARP EDGES	
ANGULAR DIM. ±			