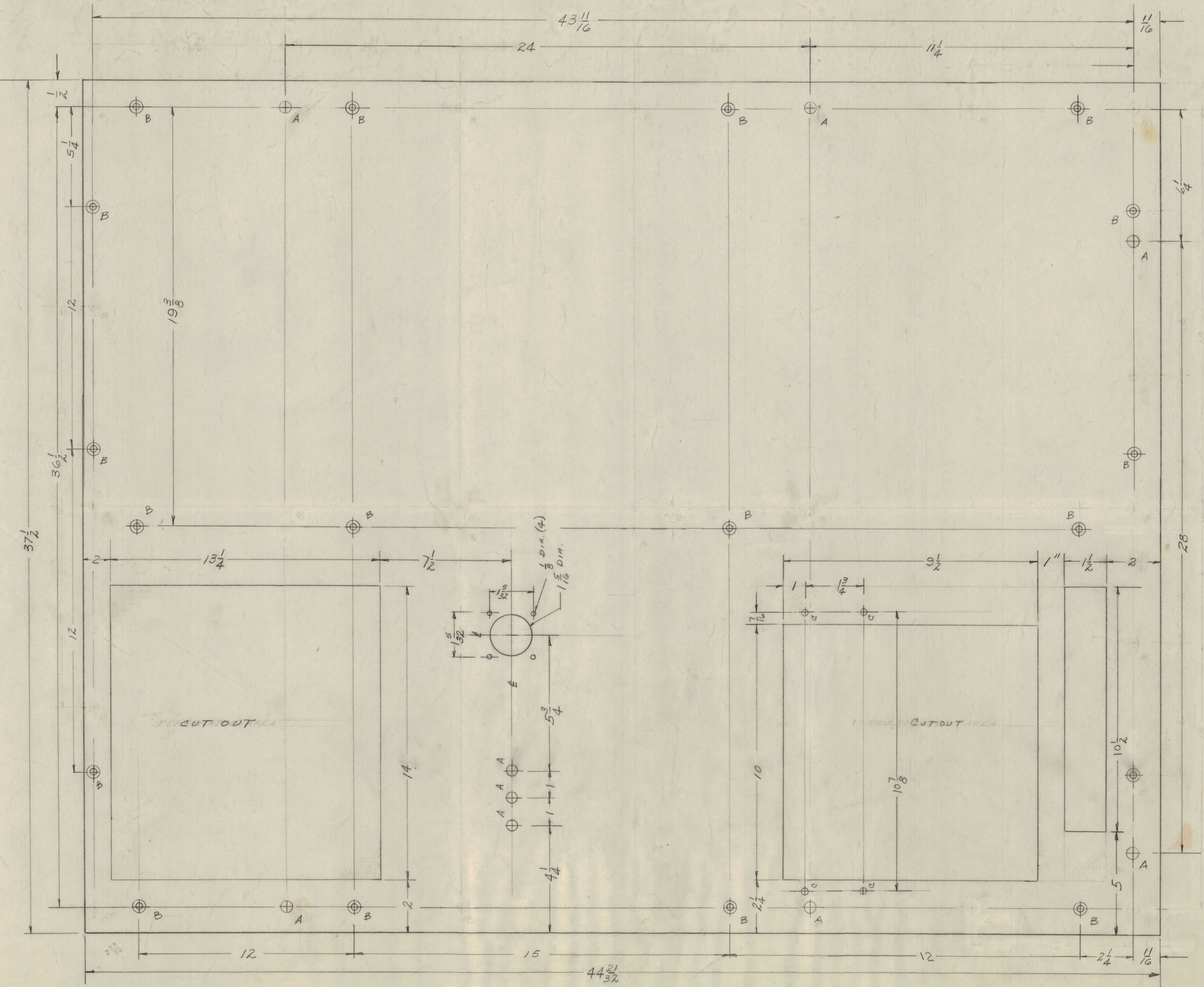


IF IT IS FOUND DESIRABLE TO CHANGE ANY TOLERANCE OR OTHER DETAIL SPECIFIED ON THIS DRAWING NOTIFY THE PURCHASER PROMPTLY.
 MAXIMUM ALLOWABLE TOLERANCES HAVE BEEN DETERMINED AND DEVIATIONS WILL BE CAUSE FOR REJECTION.
 REMOVE ALL BURRS AND SHARP EDGES

HOLE LEGEND

- A - $\frac{1}{2}$ (.500) DIA 10 REQ.
- B - C-SINK FOR 8-32 F.H.S. 18 REQ.
- C - .221 TO .224 DIA 4 REQ.
FOR NT-129-832-4

NOTICE TO PERSONS RECEIVING THIS DRAWING
 THE TECHNICAL MATERIEL CORPORATION claims proprietary right in the material disclosed hereon. This drawing is issued in confidence for engineering information only and may not be reproduced or used to manufacture anything shown hereon without permission from THE TECHNICAL MATERIEL CORPORATION to the user. This drawing is loaned for mutual assistance and is subject to recall at any time.
 Property of:
 THE TECHNICAL MATERIEL CORPORATION
 MAMARONECK, NEW YORK



MS-1643 A

A	ALL HOLES RELOCATED	4/1/59			
ISSUE	ITEM	CHANGED FROM	DATE	CN. NO.	DRAFTS CHECKER ENG. APP.
TOLERANCES		SCALE: CPO			
ALL OTHERS	DEC. DIM. \pm 1/64 FRAC. DIM. \pm 1/64 ANGULAR DIM. \pm	DRILL PUNCH, COMMERCIAL STOCK SIZES AND MANUFACTURERS TOLERANCES ARE NOT INCLUDED.			

1	SPT-10KW	T1-101 MAIN	2-25-59
REQ PER UNIT	MODEL	PROJECT NO.	DATE
		ASSY. NO.	
		USED ON	

Ref-8LD-581

REQ. ITEM	PART NO.	DESCRIPTION	SYMBOL
.084		THE TECHNICAL MATERIEL CORP. MAMARONECK, NEW YORK	
ALUM.		SHIELD, LEFT SIDE, BOTTOM,	
5052-H32		MAIN FRAME (T1-101)	
TYPE & TEMPER			
DRAWN		ELEC. DES. APP.	MECH. DES. APP.
HEAT TREAT. SPEC.		CHECKED	FINAL APPROVAL
5404 IRIDITE			
FINISH & SPEC. NO.			

MS-1643 A