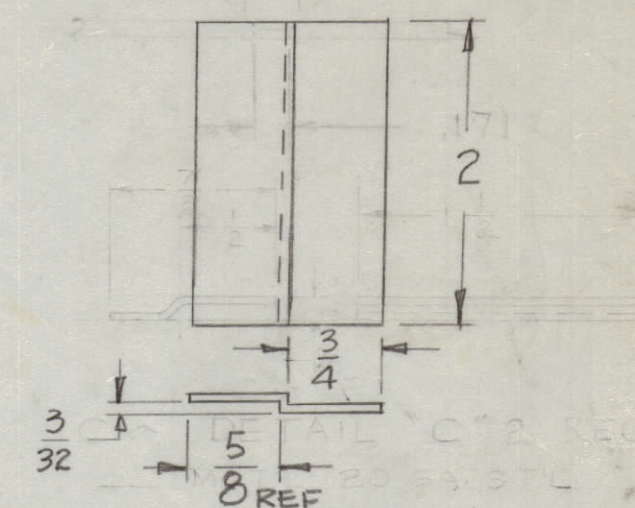
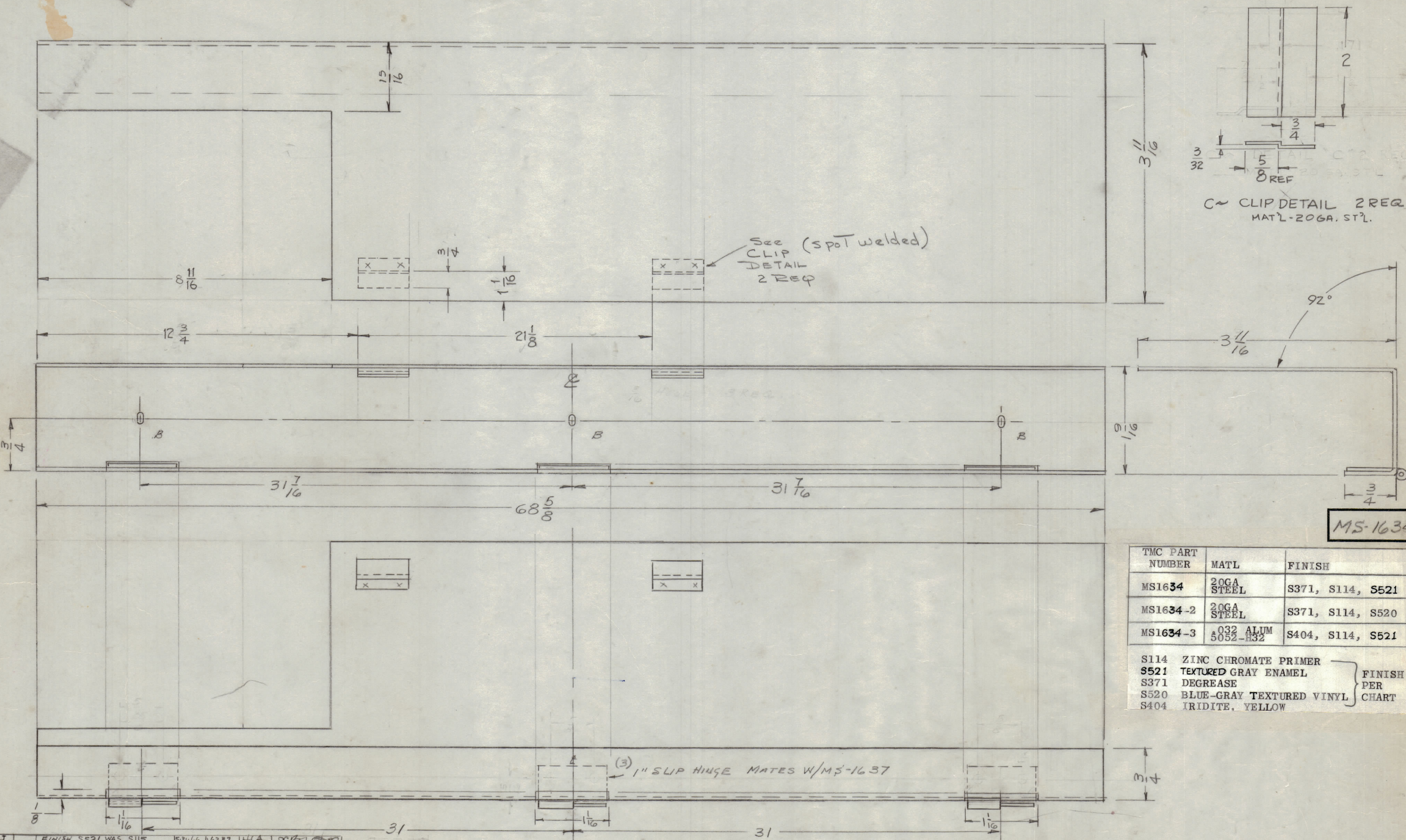


IF IT IS FOUND DESIRABLE TO CHANGE ANY TOLERANCE OR OTHER DETAIL SPECIFIED ON THIS DRAWING NOTIFY THE PURCHASER PROMPTLY.

MAXIMUM ALLOWABLE TOLERANCES HAVE BEEN DETERMINED AND DEVIATIONS WILL BE CAUSE FOR REJECTION. REMOVE ALL BURRS AND SHARP EDGES.

B 1/4 x 3/16 slots 3 REQ.



C CLIP DETAIL 2 REQ
MATL-20GA. STL.

MS-1634 J

TMC PART NUMBER	MATL	FINISH
MS1634	20GA STEEL	S371, S114, S521
MS1634-2	20GA STEEL	S371, S114, S520
MS1634-3	032 ALUM 5052-H32	S404, S114, S521

S114 ZINC CHROMATE PRIMER
S521 TEXTURED GRAY ENAMEL
S371 DEGREASE
S520 BLUE-GRAY TEXTURED VINYL
S404 IRIDITE, YELLOW

FINISH PER CHART

ISSUE ITEM	CHANGED FROM	DATE	CH. NO.	DRAFTS	CHECKER	ENG. APP.
J	FINISH S521 WAS S114	5/31/66	16287	HCA	gls	[Signature]
H	CHART ADDED	11/22/60	15239	N.V.V.	[Signature]	[Signature]
G	FINISH REVISED	1/7/64	10699	[Signature]	[Signature]	[Signature]
F	TRIM STRIPS RELOCATED	6/11/60	2465	DM	[Signature]	[Signature]
E	ADD DETAIL "C"	4/27/60	2193	W.F.	[Signature]	[Signature]
D	Reversed Hinges.	12/14/59	1668	16	[Signature]	[Signature]
C	ADDED 1/8 x 1/16 CUTOOT DELETED C-A-3/64 D. HOLE	11/15/59	1521	me	[Signature]	[Signature]
B	20 GA ADDED MATERIAL WAS .064 ALUMINUM	6/11/60		JCB	[Signature]	[Signature]
A	3/16 CUTOOT WAS 1/8 CUTOOT 6/16 FROM END	3/17/59		ANC	[Signature]	[Signature]

NOTICE TO PERSONS RECEIVING THIS DRAWING

THE TECHNICAL MATERIEL CORPORATION claims proprietary right in the material disclosed hereon. This drawing is issued in confidence for engineering information only and may not be reproduced or used to manufacture anything shown hereon without permission from THE TECHNICAL MATERIEL CORPORATION to the user. This drawing is loaned for mutual assistance and is subject to recall at any time.

Property of:
THE TECHNICAL MATERIEL CORPORATION
MAMARONECK, NEW YORK

UNLESS OTHERWISE SPECIFIED
DIMENSIONS ARE IN INCHES AND INCLUDE
CHEMICALLY APPLIED OR PLATED FINISHES

DECIMALS .X ± .05
.XX ± .01
.XXX ± .005

FRACTIONS ± 1/64
ANGLES ± 0° 30'

TOLERANCES

CUT HERE GUARANTEED 2-50

REQ. PER UNIT	MODEL	PROJECT NO.	ASSY. NO.	DATE
1	GPT-40K			4-28-60
1	GPT-10K-F()		AX-	
1	GPT10K-D()		AX-188	
1	GPT10K-B()		AX-185	
1	GPT-10KA(),C(),E(),L()		AX-166	

USED ON

REQ. ITEM	PART NO.	DESCRIPTION	SYMBOL
SEE CHART		THE TECHNICAL MATERIEL CORP. MAMARONECK, NEW YORK	
SEE CHART		TRIM, LEFT SIDE, MAIN FRAME	
SEE CHART			
TYPE & TEMPER		DRAWN	ELEC. DES. APP. MECH. DES. APP.
HEAT TREAT. SPEC.		CHECKED	FINAL APPROVAL
FINISH & SPEC. NO.			MS-1634 J