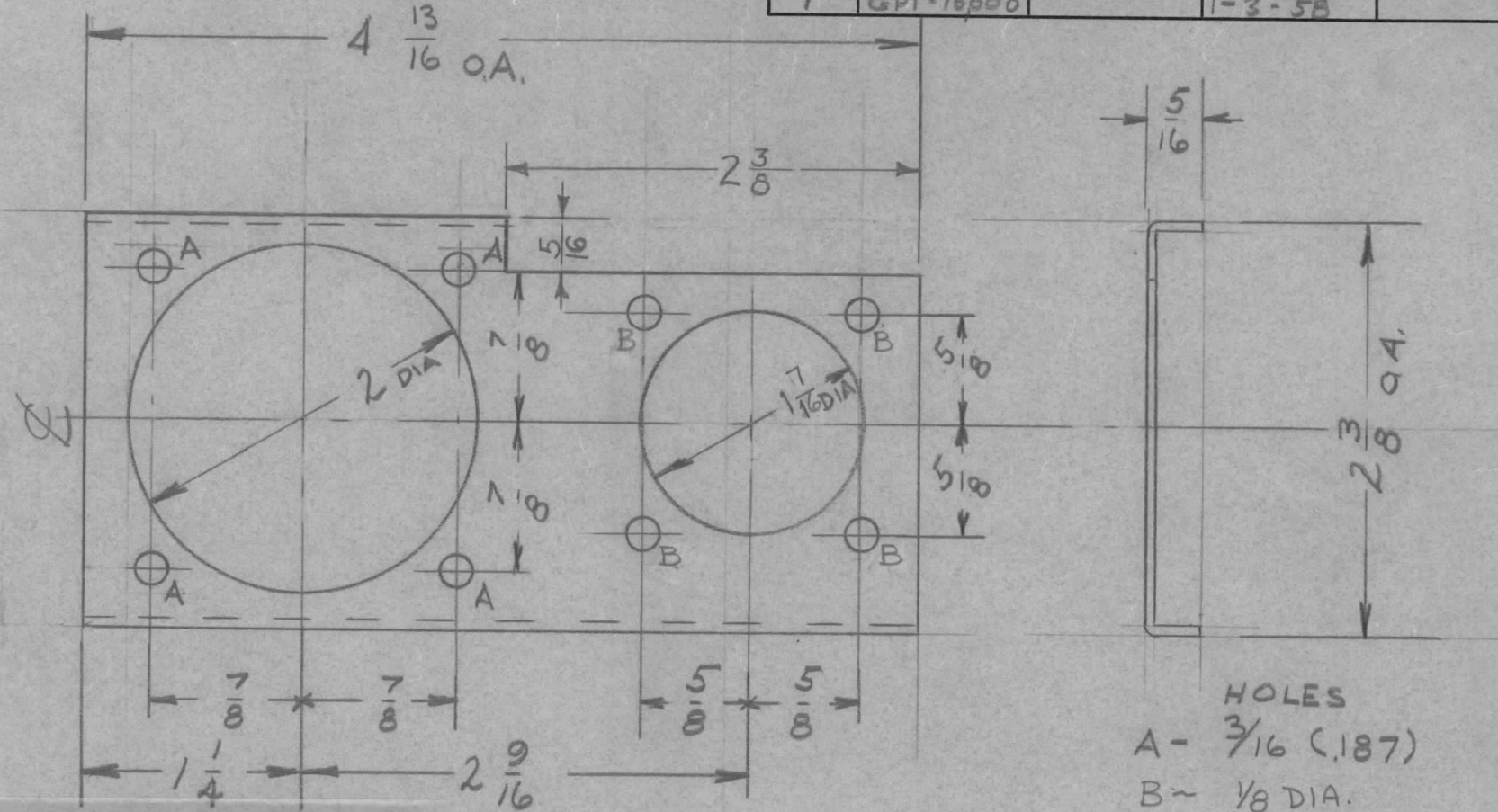


REQ. PER UNIT	USED ON		MS-1510	C
	MODEL	ASS'Y. NO.		
1	GPT-10000		1-3-58	



HOLES	REQ'D
A - 3/16 (.187)	4
B - 1/8 DIA.	4

UNLESS OTHERWISE SPECIFIED
DIMENSIONS ARE IN INCHES AND INCLUDE
CHEMICALLY APPLIED OR PLATED FINISHES

DECIMALS	FRACTIONS
.X ± .05	± 1/64
.XX ± .01	ANGLES
.XXX ± .005	± 0° 30'

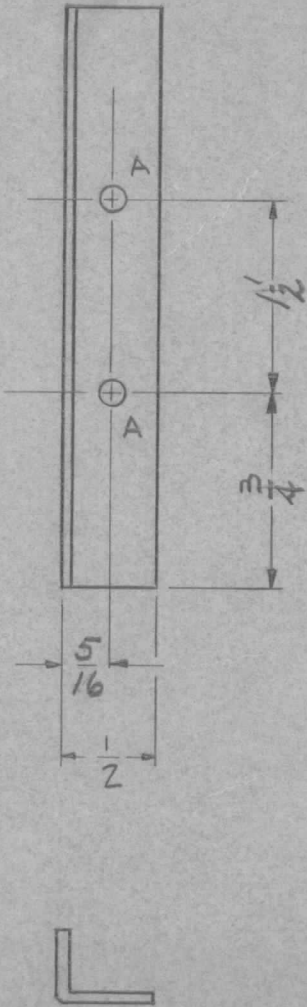
TOLERANCES

CUT HERE
GUARANTEED
2-66

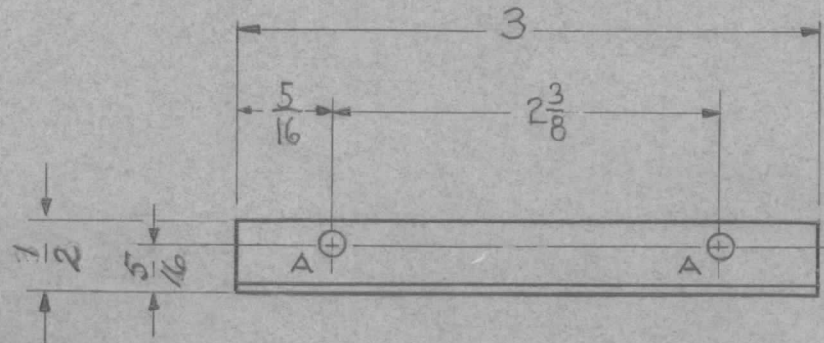
Ref - 1LD-523 (Lettering) GPT-10K

REQ.	ITEM	PART NO.	DESCRIPTION	SYMBOL											
C	1	(4) "B" HOLES WERE "A" HOLES	12-18-62	7870	<i>M.A.F.</i>	<i>[Signature]</i>	062	THE TECHNICAL MATERIEL CORP. MAMARONECK, NEW YORK							
B	1	1 7/16 D. Was 1 1/4 D.	6-20-61	5101	<i>M.A.F.</i>	<i>JCB</i>	STOCK SIZE								
A	1	ADDED CUTOUT OF 2-3/8 X 5/16	12/22/59	1694	<i>AB</i>	<i>[Signature]</i>	ALUMINUM								
ISSUE		ITEM	CHANGED FROM	DATE	CH. NO.	DRAFTS	CHECKER	ENG. APP.	RECEPTACLE, MOUNT RELAY PANEL						
TOLERANCES				SCALE:					5052-H32	<i>Torillo</i>	<i>Wain</i>	<i>AMB</i>			
DEC. DIM. ±				MAXIMUM ALLOWABLE TOLERANCES HAVE BEEN DETERMINED AND ANY DEVIATIONS WILL BE CAUSE FOR REJECTION. REMOVE ALL BURRS AND SHARP EDGES					TYPE & TEMPER	HEATTREAT. SPEC.	DRAWN	CHECKED	FINAL APPROVAL		
FRAC. DIM. ±									IRIDITE			<i>[Signature]</i>			
ANGULAR DIM. ±									FINISH & SPEC. NO.	ELEC. DES. APP.	MECH. DES. APP.				MS-1510

REQ. PER UNIT	USED ON			MS-1529	B
	MODEL	ASS'Y. NO.	DATE		
2	GPT-10K	AT-100	1-31-59		

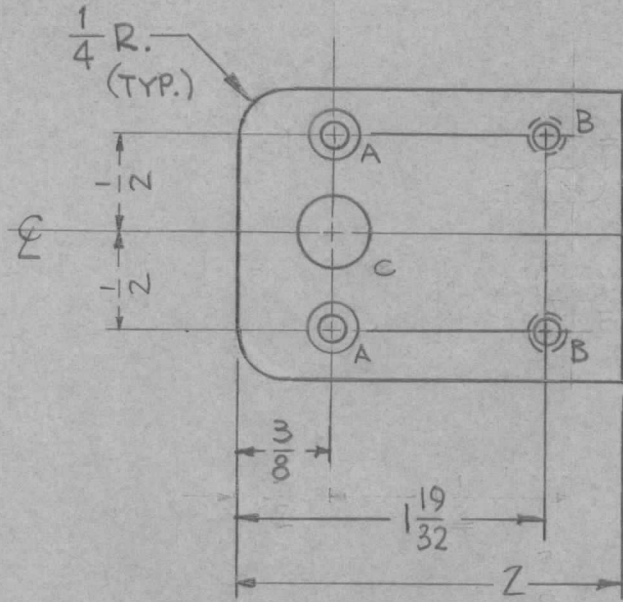


A - 13/64 (.203) DIA. 4 REQ'D.

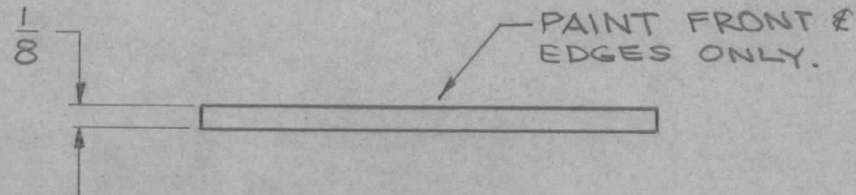


REQ.	ITEM	PART NO.	DESCRIPTION				SYMBOL
		.081	THE TECHNICAL MATERIEL CORP.				
		STOCK SIZE	MAMARONECK, NEW YORK				
B	1	"A" HOLES (13/64) WERE 9/64 A HOLES RELOCATED	11/11/60	1740	11/9	J.C. Biele	
A	1	STOCK SIZE WAS .064	12/22/59	1693	11/9	J.C. Biele	
ISSUE	ITEM	CHANGED FROM	DATE	CH. NO.	DRAFTS	CHECKER	ENG. APP.
TOLERANCES			SCALE:				
DEC. DIM. ±			MAXIMUM ALLOWABLE TOLERANCES HAVE BEEN DETERMINED AND ANY DEVIATIONS WILL BE CAUSE FOR REJECTION.				
FRAC. DIM. ± 1/64			REMOVE ALL BURRS AND SHARP EDGES				
ANGULAR DIM. ±							
5052-H-32			J.C. BIELE		J.C. Biele		
TYPE & TEMPER		HEAT TREAT. SPEC.	DRAWN		CHECKED		FINAL APPROVAL
IRIDITE					J.C. Biele		MS-1529 B
FINISH & SPEC. NO.			ELEC. DES. APP		MECH. DES. APP		

REQ. PER UNIT	USED ON			MS-1530 C
	MODEL	ASS'Y. NO.	DATE	
2	GPT-10K	RELAY PAN.	2-2-59	

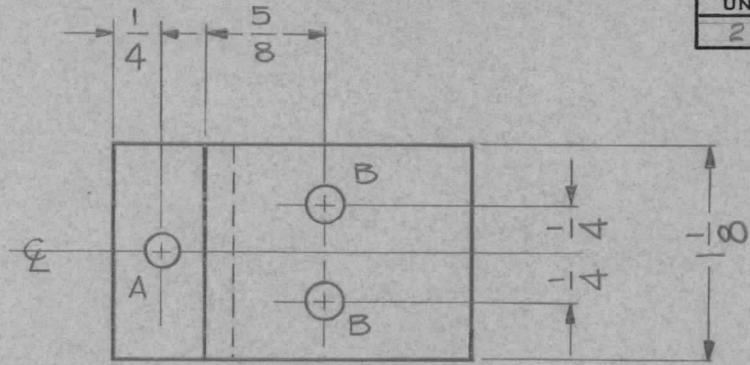


- A - DR. 120 DIA. C'SINK 82° TO .230 DIA. 2 REQ'D.
- B - DRILL & TAP FOR 10-32 2 "
- C - 1/2 (.500) DIA. 1 "



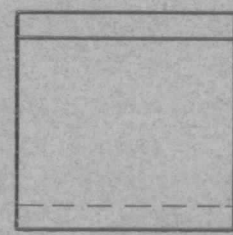
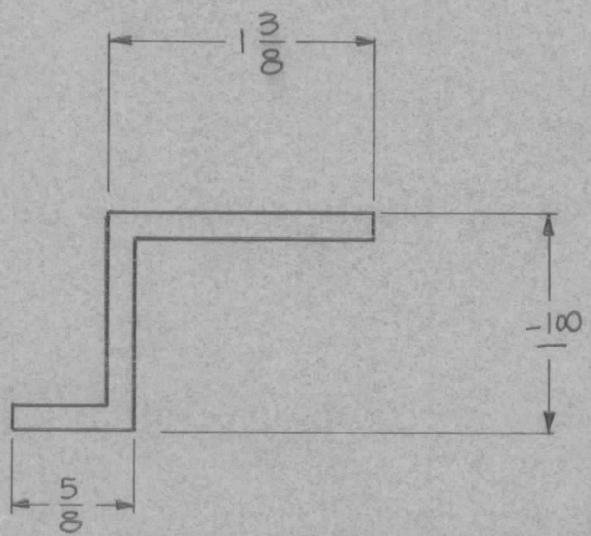
ISSUE	ITEM	CHANGED FROM	DATE	CH. NO.	DRAFTS	CHECKER	ENG. APP.	REQ.	ITEM	PART NO.	DESCRIPTION	SYMBOL		
C		ADD. 1/4 R.	4-25-66	16152	HLA	<i>[Signature]</i>	<i>[Signature]</i>			178	THE TECHNICAL MATERIEL CORP.			
B		REV. COMPLETELY	2-2-66	15694	<i>[Signature]</i>	<i>[Signature]</i>	<i>[Signature]</i>			STOCK SIZE	MAMARONECK, NEW YORK			
A	1	3/8 was 1/2 (1/2 was 1/4)	3/23/59		<i>[Signature]</i>	<i>[Signature]</i>	<i>[Signature]</i>			STEEL	CENTER MOUNTING BRKT			
										MATERIAL	RELAY PANEL / GPT-10K			
TOLERANCES								SCALE:						
DEC. DIM. ±								MAXIMUM ALLOWABLE TOLERANCES HAVE BEEN DETERMINED AND ANY DEVIATIONS WILL BE CAUSE FOR REJECTION:						
FRAC. DIM. ± 1/64								REMOVE ALL BURRS AND SHARP EDGES						
ANGULAR DIM. ±								TYPE & TEMPER		HEAT TREAT. SPEC.	DRAWN	CHECKED	FINAL APPROVAL	
								S115 SMOOTH GREY ENAMEL			L.B.	<i>[Signature]</i>	MS-1530 C	
								FINISH & SPEC. NO.		ELEC. DES. APP.	MECH. DES. APP.			

REQ. PER UNIT	USED ON			MS-1542
	MODEL	ASS'Y. NO.	DATE	
2	GPT-10K	RELAY PANEL	2-2-59	



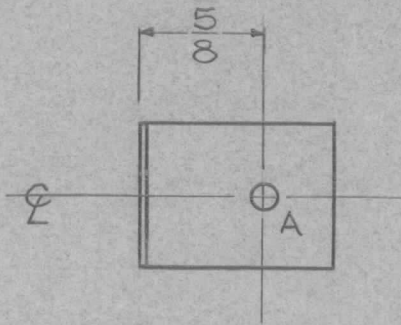
A ~ 11/64 (.171) DIA.
 B ~ 3/16 (.187) DIA.

1 REQ'D.
 2 "

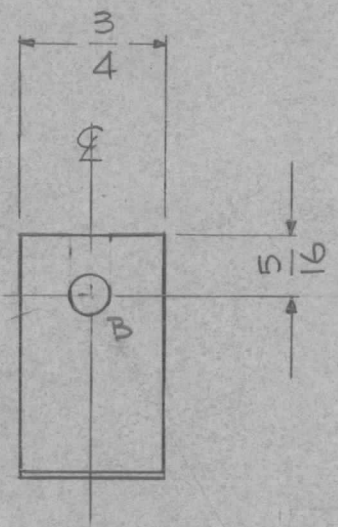
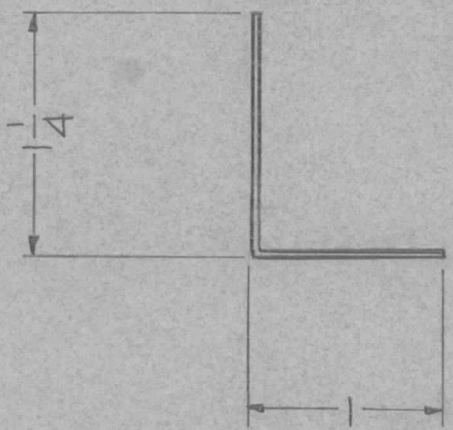


REQ.	ITEM	PART NO.	DESCRIPTION		SYMBOL										
		1/8	THE TECHNICAL MATERIEL CORP.												
		STOCK SIZE	MAMARONECK, NEW YORK												
		ALUMINUM	TOP BRACKET												
		MATERIAL	RELAY PANEL GPT-10K												
ISSUE	ITEM	CHANGED FROM	DATE	CH. NO.	DRAFTS	CHECKER	ENG. APP.	5052-H32	5052-H32	J.C. BIELE	<i>HL</i>	<i>ARB</i>			
TOLERANCES			SCALE:			TYPE & TEMPER		HEAT TREAT. SPEC.		DRAWN		CHECKED		FINAL APPROVAL	
DEC. DIM. ±			MAXIMUM ALLOWABLE TOLERANCES HAVE BEEN DETERMINED AND ANY DEVIATIONS WILL BE CAUSE FOR REJECTION.			IRIDITE				<i>LB</i>		<i>29</i>		MS-1542	
FRAC. DIM. ± 1/64			REMOVE ALL BURRS AND SHARP EDGES			FINISH & SPEC. NO.				ELEC. DES. APP		MECH. DES. APP			
ANGULAR DIM. ±															

REQ. PER UNIT	USED ON			MS-1543
	MODEL	ASS'Y. NO.	DATE	
2	GPT-10K	RF Deck	1-31-59	

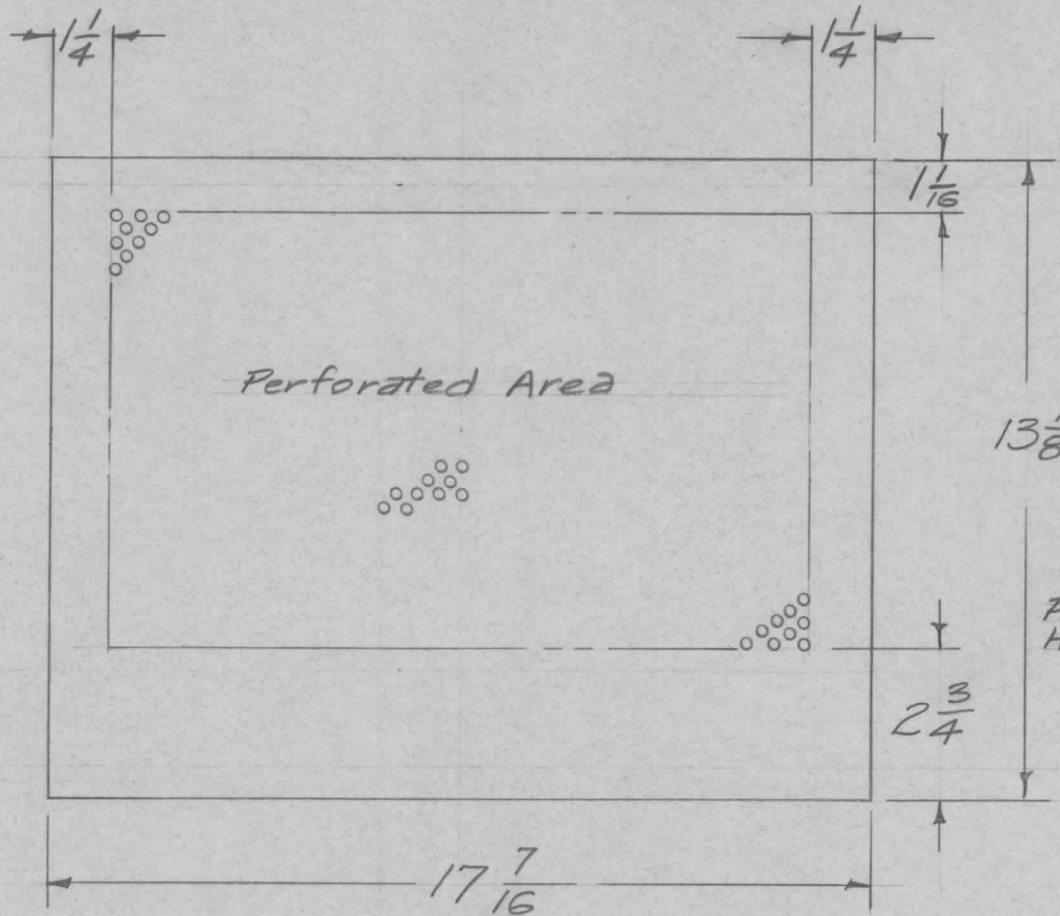


A - 9/64 (.140) DIA. 1 REQ'D.
 B - 17/64 (.250) DIA. 1 REQ



REQ.	ITEM	PART NO.	DESCRIPTION			SYMBOL	
		.081	THE TECHNICAL MATERIEL CORP.				
		STOCK SIZE	MAMARONECK, NEW YORK				
		ALUMINUM	SUPPORT, CHOKE				
		MATERIAL	GPT-10K				
ISSUE	ITEM	CHANGED FROM	DATE	CH. NO.	DRAFTS	CHECKER	ENG. APP.
TOLERANCES			SCALE: —				
DEC. DIM. ±			MAXIMUM ALLOWABLE TOLERANCES HAVE BEEN DETERMINED AND ANY DEVIATIONS WILL BE CAUSE FOR REJECTION. REMOVE ALL BURRS AND SHARP EDGES				
FRAC. DIM. ± 1/64							
ANGULAR DIM. ±							
TYPE & TEMPER		HEAT TREAT. SPEC.	DRAWN	CHECKED	FINAL APPROVAL		
IRIDITE					MS-1543		
FINISH & SPEC. NO.		ELEC. DES. APP	MECH. DES. APP				

REQ. PER. UNIT	USED ON			MS-1560
	MODEL	ASS'Y. NO.	DATE	
1	TTG		2-13-59	



Perforation to be .072D
Holes on 1/8 centers.

Ref: 8MS-1561 COVER, TOP

REQ.	ITEM	PART NO.	DESCRIPTION			SYMBOL	
		.051 THK.	THE TECHNICAL MATERIEL CORP.				
		STOCK SIZE	MAMARONECK, NEW YORK				
		Aluminum	BLANK SIZE, TOP COVER				
		MATERIAL					
ISSUE	ITEM	CHANGED FROM	DATE	CH. NO.	DRAFTS	CHECKER	ENG. APP.
TOLERANCES			SCALE: $\frac{1}{4}$				
DEC. DIM. \pm			MAXIMUM ALLOWABLE TOLERANCES HAVE BEEN DETERMINED AND ANY DEVIATIONS WILL BE CAUSE FOR REJECTION. REMOVE ALL BURRS AND SHARP EDGES				
FRAC. DIM. $\pm 1/64$							
ANGULAR DIM. \pm							
TYPE & TEMPER		HEAT TREAT. SPEC.	DRAWN	CHECKED	FINAL APPROVAL		
			RWB	ARB	MS-1560		
FINISH & SPEC. NO.		ELEC. DES. APP	MECH. DES. APP				