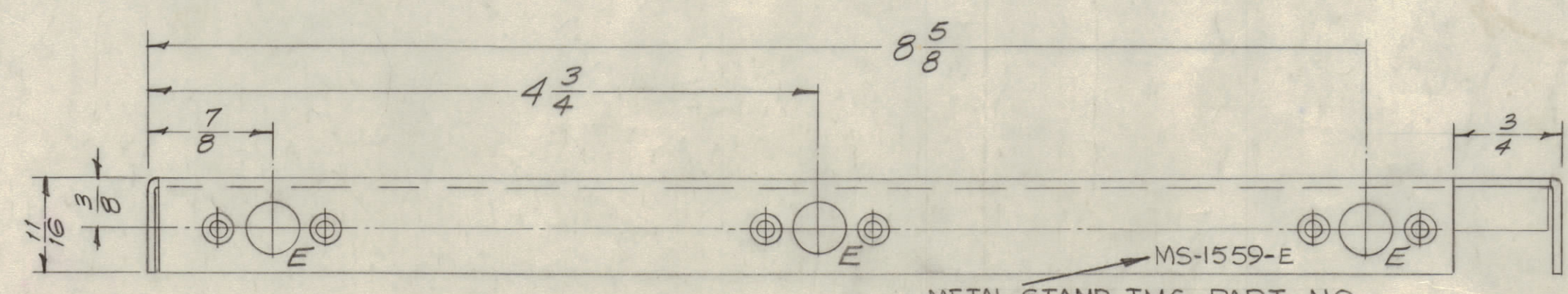
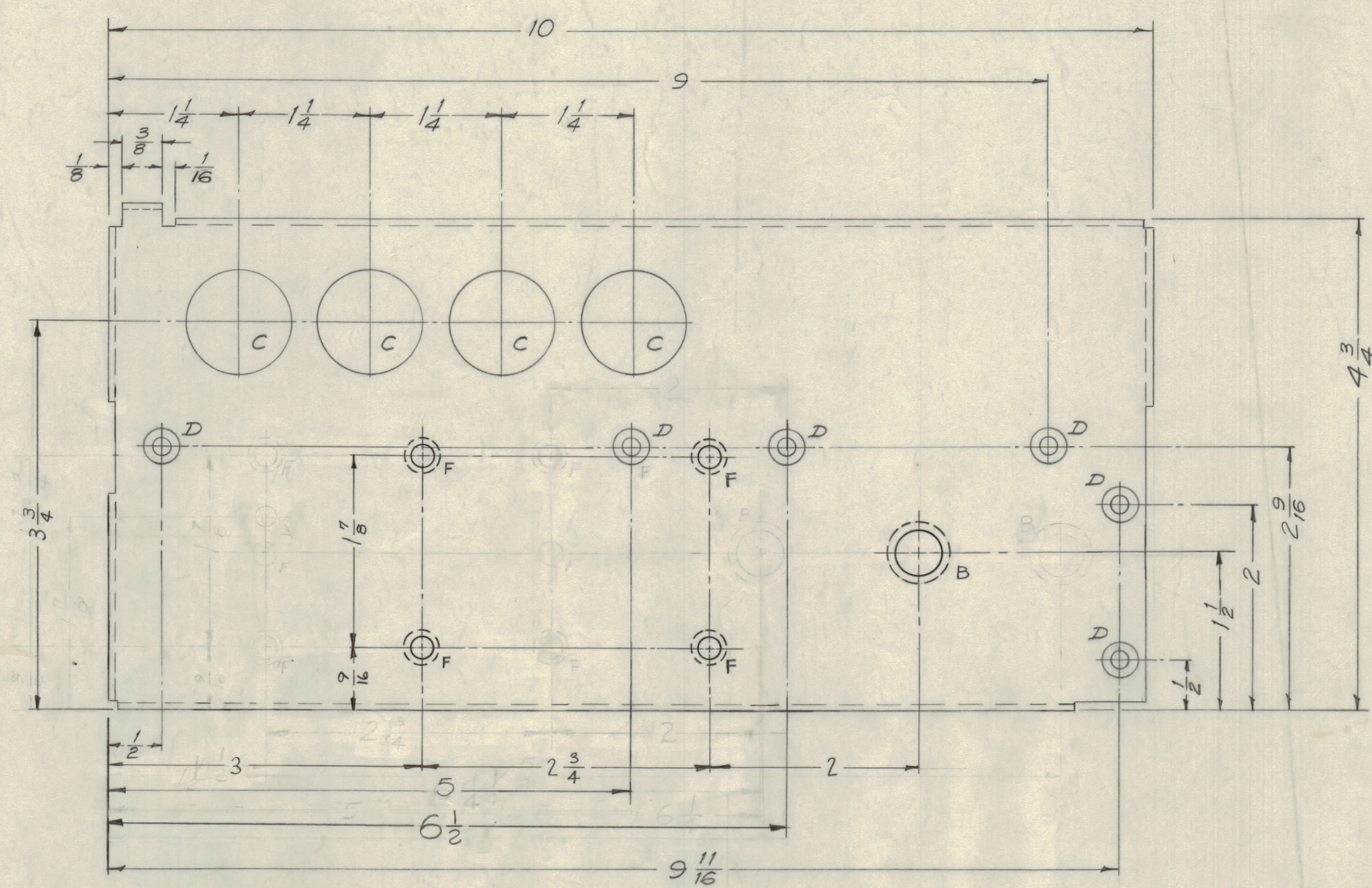
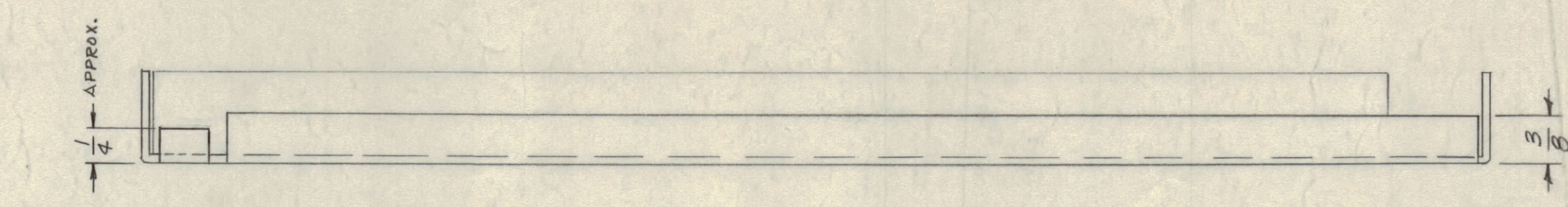
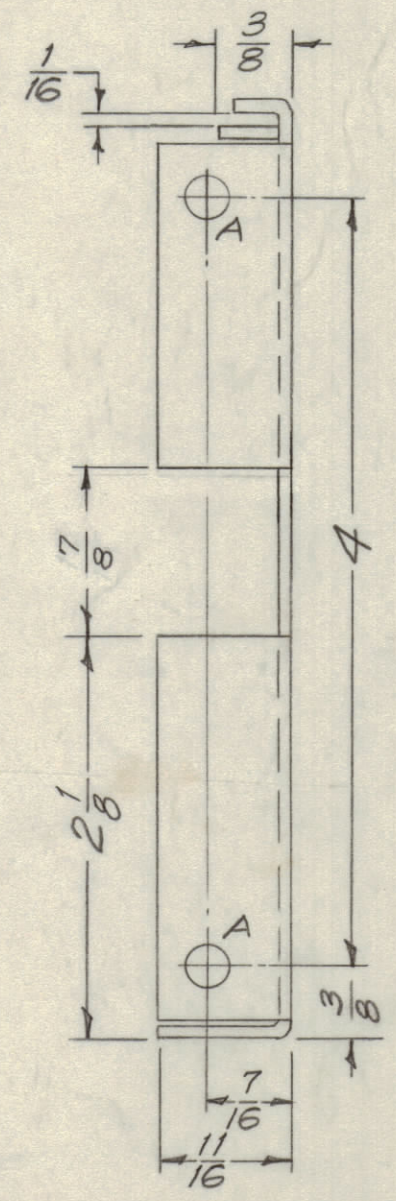


IF IT IS FOUND DESIRABLE TO CHANGE ANY TOLERANCE OR OTHER DETAIL SPECIFIED ON THIS DRAWING NOTIFY THE PURCHASER PROMPTLY.
 MAXIMUM ALLOWABLE TOLERANCES HAVE BEEN DETERMINED AND DEVIATIONS WILL BE CAUSE FOR REJECTION. REMOVE ALL BURRS AND SHARP EDGES

NOTICE TO PERSONS RECEIVING THIS DRAWING

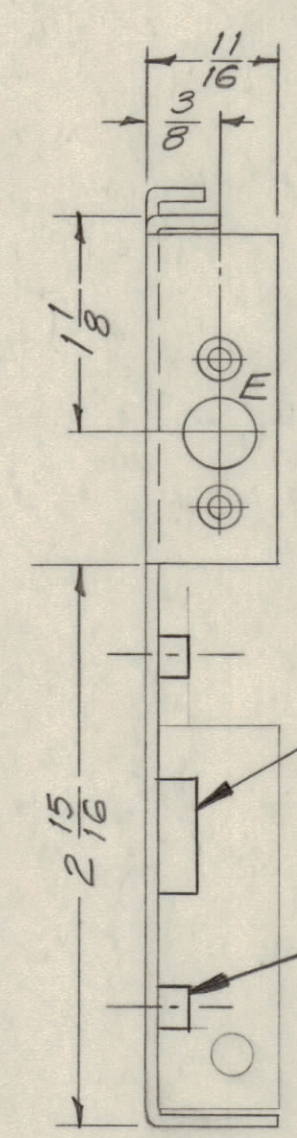
THE TECHNICAL MATERIEL CORPORATION claims proprietary right in the material disclosed hereon. This drawing is issued in confidence for engineering information only and may not be reproduced or used to manufacture anything shown hereon without permission from THE TECHNICAL MATERIEL CORPORATION to the user. This drawing is loaned for mutual assistance and is subject to recall at any time.

Property of:
 THE TECHNICAL MATERIEL CORPORATION
 MAMARONECK, NEW YORK



METAL STAMP TMC PART NO.
 1/8 HIGH GOTHIC AS SHOWN.

- A - $\frac{13}{64}$ (.203) D. 2 Req.
- B - "Z" Drill (.413) D. 1 Req.
- C - 1(1.000) D. 4 Req.
- D - 6 Req.
- E - 4 Req.
- F - .221-.224 DIA. 4 REQ.



1 MOUNT ITEM 1 IN "B" HOLE AS SHOWN.

2 MOUNT ITEM 2 IN ALL "F" HOLES AS SHOWN

USE MATERIAL THICKNESS FOR MAX. RADIUS ON ALL BENDS UNLESS OTHERWISE SPECIFIED

MOUNT INSERTS AFTER FINISHING

E	2	LEFT SIDE, 7/8 DIM WAS 13/16	9-21-62	73.58	JCB	WDE
D	1	3-3/4 DIM, 1/4 APPROX DIM ADDED	7-24-61	69.47	JCB	WDE
C	4	4 (#1) (8) HOLE RELOCATED	7-24-61	69.47	JCB	WDE
B	1	4 (#1) (8) HOLE RELOCATED	7-24-61	69.47	JCB	WDE
A	1	ITEM 1 NF-129-524-4 ADDED	5-22-61	44.11	JCB	WDE
	1	1-7/8 DIM WAS 1-11/16	7-14-60	100.8	JCB	WDE

ALL OTHERS	DEC. DIM. ±	DRILL, PUNCH, COMMERCIAL STOCK
	ANGULAR DIM. ±	SIZES AND MANUFACTURERS
		TOLERANCES ARE NOT INCLUDED.

1	TTG	PROJECT NO.	ASSY. NO.	DATE
REQ PER UNIT	MODEL			2-12-58
				HEAT TREAT SPEC.
				5404 Iridite
				FINISH & SPEC. NO.

4	2	NT-129-832-4	NUT, ROUND, SWAGE TYPE	F
1	1	NT-129-524-4	NUT, ROUND, SWAGE TYPE	B
REQ. ITEM	PART NO.	DESCRIPTION		SYMBOL
	.064 THK	THE TECHNICAL MATERIEL CORP.		
	STOCK SIZE	MAMARONECK, NEW YORK		
	Aluminum	SIDEPLATE, RIGHT		
	MATERIAL	WEIGHT PER PC.		
	5052-H32	TTG		
	TYPE & TEMPER	62-12-59	RWB	20
		DRAWN	ELEC. DES. APP.	MECH. DES. APP.
		HEAT TREAT SPEC.	CHECKED	FINAL APPROVAL
				MS-1559 E

MS-1559 E