

IF IT IS FOUND DESIRABLE TO CHANGE ANY TOLERANCE OR OTHER DETAIL SPECIFIED ON THIS DRAWING NOTIFY THE PURCHASER PROMPTLY.

MAXIMUM ALLOWABLE TOLERANCES HAVE BEEN DETERMINED AND DEVIATIONS WILL BE CAUSE FOR REJECTION. REMOVE ALL BURRS AND SHARP EDGES.

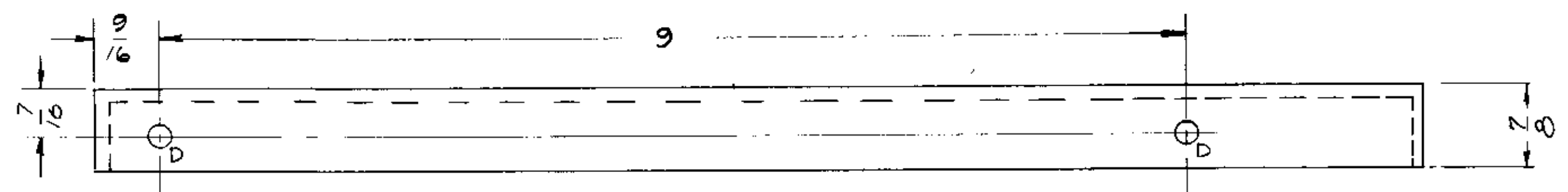
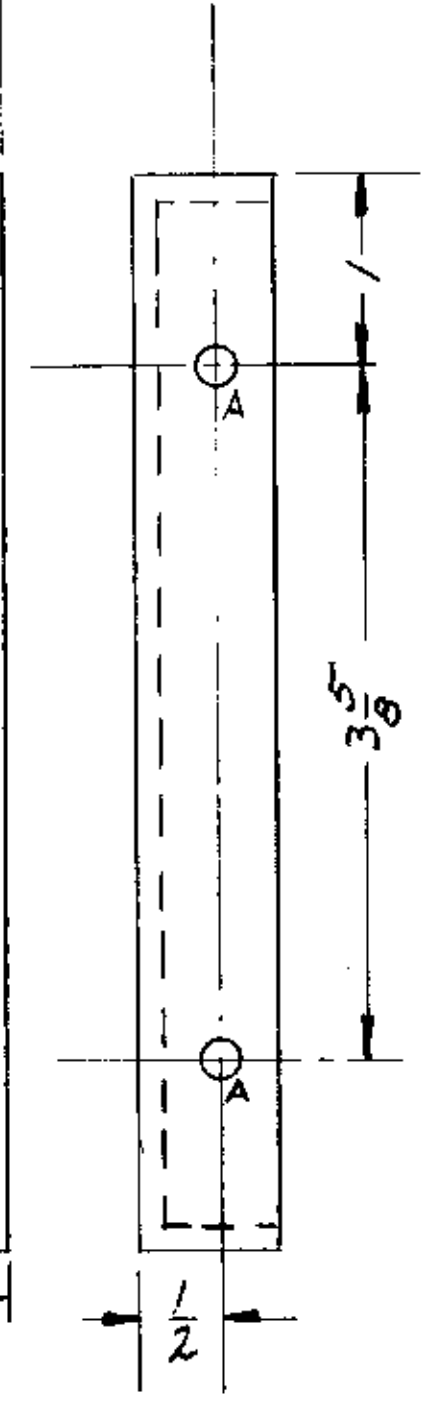
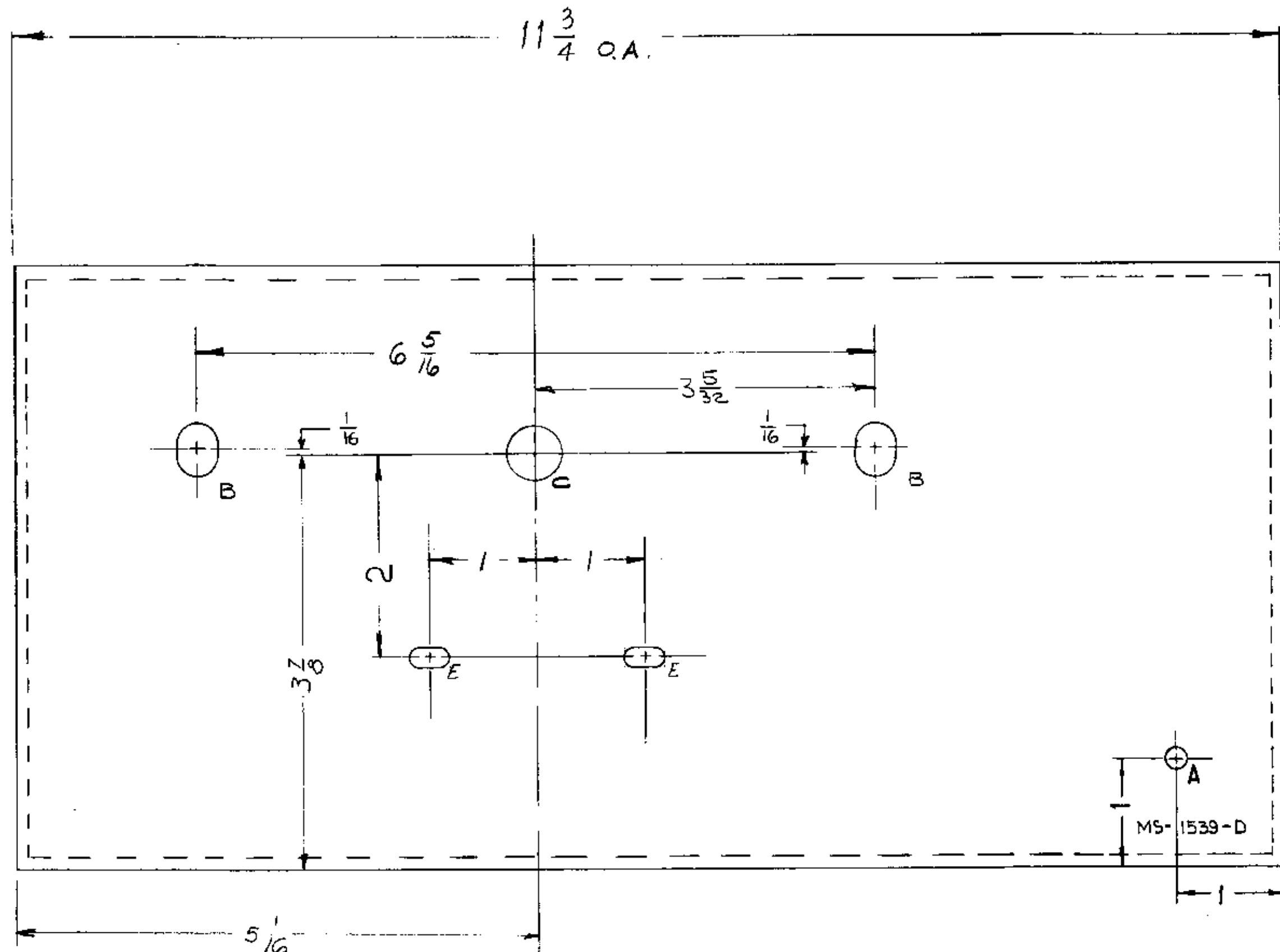
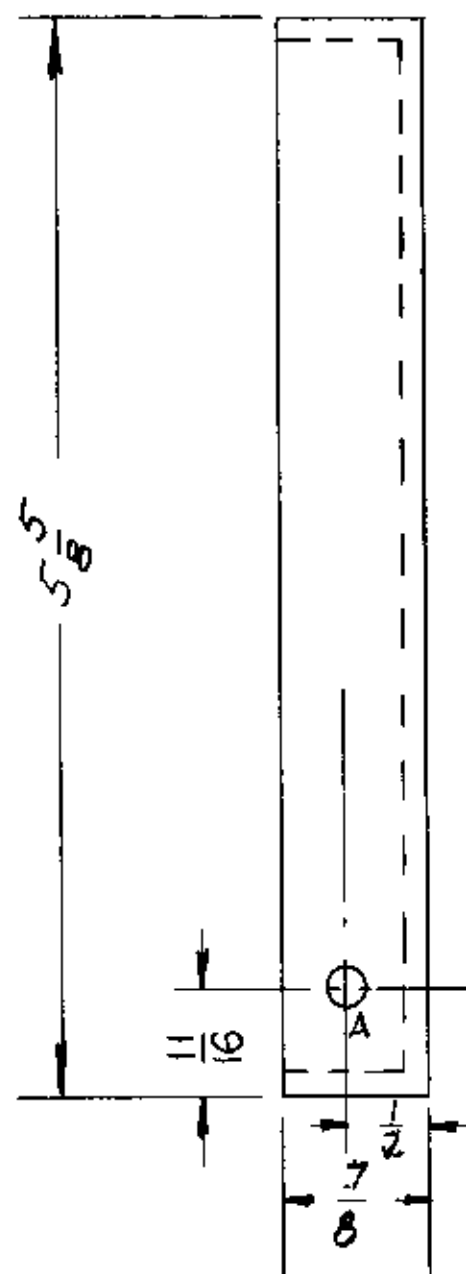
NOTICE TO PERSONS RECEIVING THIS DRAWING

THE TECHNICAL MATERIEL CORPORATION claims proprietary right in the material disclosed hereon. This drawing is issued in confidence for conveying information only and may not be reproduced or used to manufacture anything shown hereon without permission from THE TECHNICAL MATERIEL CORPORATION to the user. This drawing is loaned for mutual assistance and is subject to recall at any time.

Property of:

THE TECHNICAL MATERIEL CORPORATION
MAMARONECK, NEW YORK

HOLES	REQ'D.
A - 13/64 DIA.	4
B - SLOTTED 3/8 x 1/2	2
C - 1/2 DIA.	1
D - 17/64 DIA.	2
E - 13/64 x 13/32 SLOT	2



METAL STAMP TMC PART No. 1/8 HIGH GOTHIC.

MS-1539 D

ISSUE	ITEM	CHANGED FROM	DATE	CH. NO.	DRAFTER	CHECKER	ENG. APP.
D	1	2 1/2" SLOTS ADDED, WERE 'A' HOLES	4-23-63	8864	JCB	JCB	JCB
C	3	CENTER 'B' HOLES RELOCATED, 1/16" CENTER 'C' HOLES	7-16-64	5234	G.D.L.	JCB	JCB
C	2	'B' HOLES SLOTTED WERE 3/8 DIA					
C	1	ON BOTTOM VIEW 'D' HOLES WERE 'A' HOLES					
B	1	Dim 1/16 WAS 9/16 DIA Hole All	6-16-61	3000	R.W.	J.C.B.	J.C.B.
A	1	11 3/4 Dim was 10 3/4	4/15/55	1094	J.C.B.	J.C.B.	J.C.B.

UNLESS OTHERWISE SPECIFIED DIMENSIONS ARE IN INCHES AND INCLUDES CHERICALLY APPLYING TO RELATED DIMENSIONS

TOLERANCES: DECIMALS ± 0.005, FRACTIONS ± 1/64, ANGLES ± 30'

REQ. PER UNIT	MODEL	PROJECT NO.	ASSY. NO.	DATE
1	GPT-10K	AT-100		7-30-59

REQ. ITEM	PART NO.	DESCRIPTION	SYMBOL
1/8 THICK		THE TECHNICAL MATERIEL CORP. MAMARONECK, NEW YORK	
ALUMINUM		RIGHT SIDE PLATE	
5052-H32		AUT. TUNER	
IRIDITE		FINISH & SPEC. NO.	

MS-1539 D