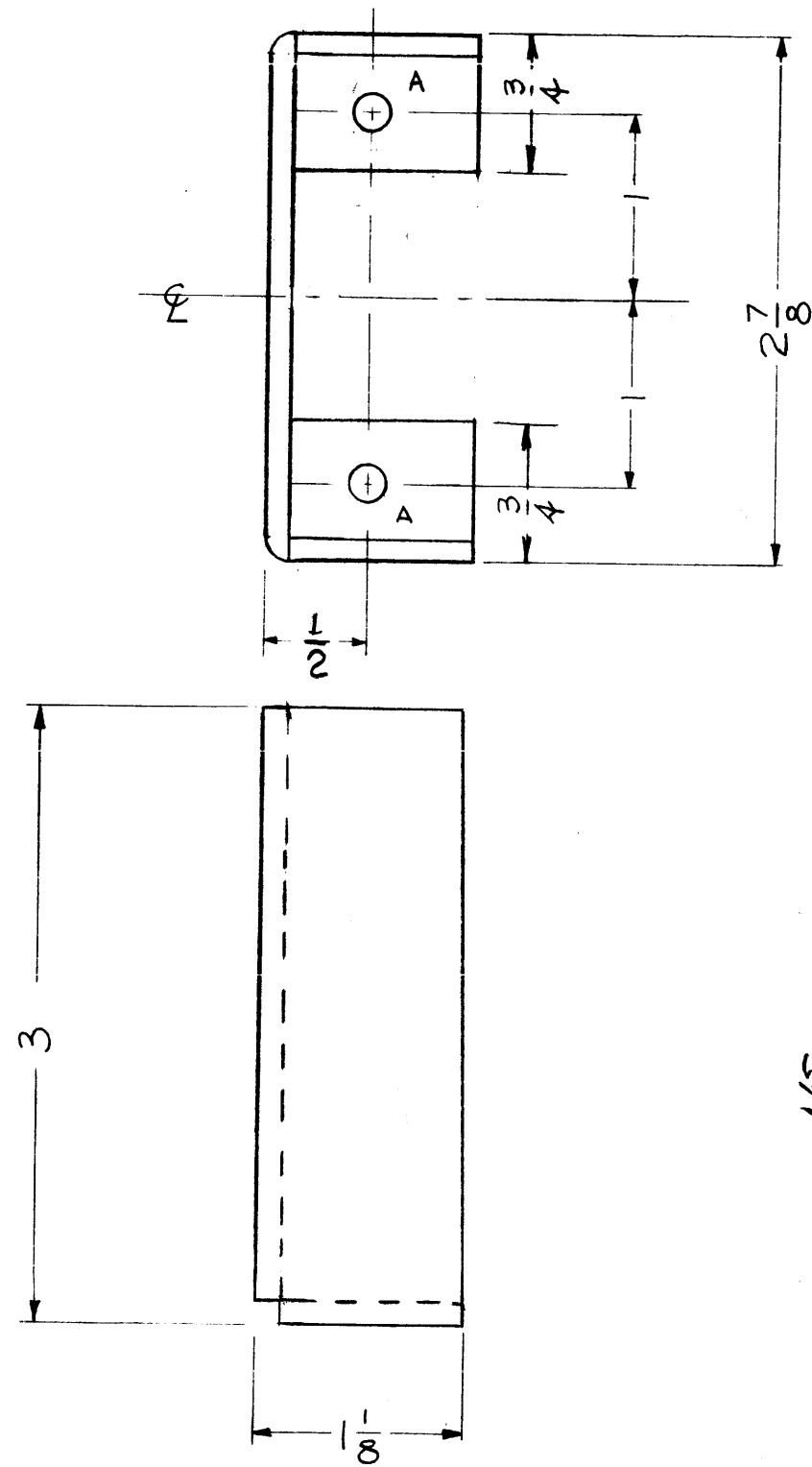
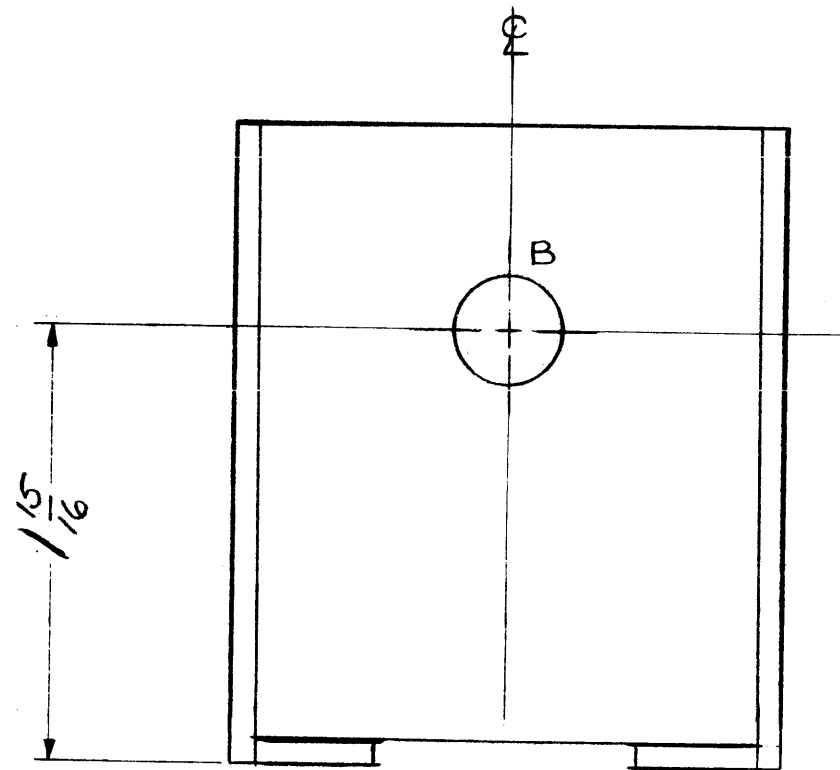


MS-1537 A



A ~ 13/64 DIA
 B ~ 9/16 DIA.

2 REQ'D.
 1 REQ'D.



NOTICE TO PERSONS RECEIVING THIS DRAWING

THE TECHNICAL MATERIEL CORPORATION claims proprietary right in the material disclosed hereon. This drawing is issued in confidence for engineering information only and may not be reproduced or used to manufacture anything shown hereon without permission from THE TECHNICAL MATERIEL CORPORATION to the user. This drawing is loaned for mutual assistance and is subject to recall at any time.

Property of:
 THE TECHNICAL MATERIEL CORPORATION
 MAMARONECK, NEW YORK

A	1	B' HOLE WAS 1/2 DIA	3-22-62	6518	G.S.	<i>[Signature]</i>	<i>[Signature]</i>
ISSUE	ITEM	CHAN ED FROM	DATE	CH. N.	DRAFTS	CHECKER	ENG. APP.
TOLERANCE		SCALE:					
DEC. DIM. ±		MAXIMUM ALL WABLE TOLERANCES HAVE BEEN DETERMINED AND ANY DEVIATIONS WILL BE CAUSE F R REJECTION: REMOVE ALL BURRS AND SHARP ED ES					
FRAC. DIM. ±							
ANGULAR DIM. ±							

1	GPT-10K	AX-137	AT-100	1-21-59
REQ. PER UNIT	MODEL	PROJECT N.	ASSY. N.	DATE
USED ON				

REQ.	ITEM	PART NO.	DESCRIPTION		SYMBOL
		1/8	THE TECHNICAL MATERIEL CORP.		
		STOCK SIZE	MAMARONECK, NEW YORK		
		ALUMINUM	GEAR SHAFT SUPPORT		
		MATERIAL	ANTENNA TUNER		
5052-H32		J.C. BIELE	<i>[Signature]</i>	<i>[Signature]</i>	
		TYPE & TEMPER	DRAWN	CHECKED	FINAL APPROVAL
		HEATTREAT. SPEC.	<i>[Signature]</i>	<i>[Signature]</i>	
		IRIDITE			MS-1537 A
		FINISH & SPEC. NO.	ELEC. DES. APP	MECH. DES. APP	