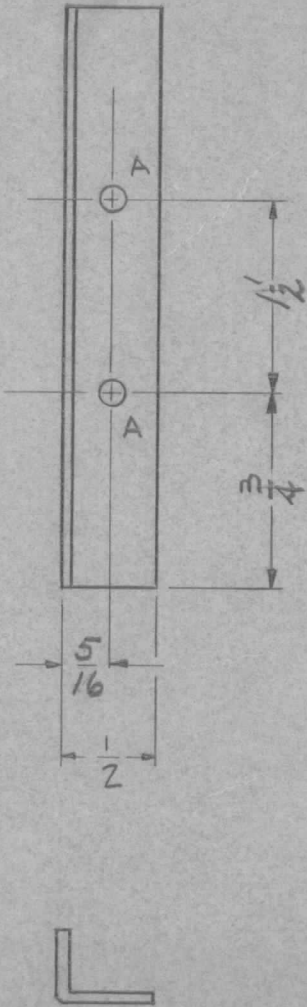
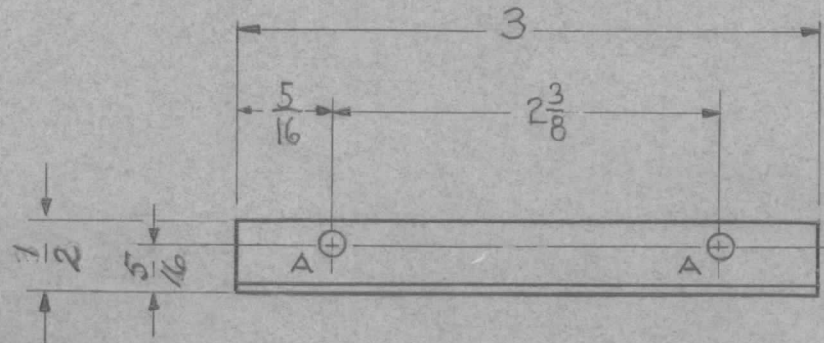


REQ. PER UNIT	USED ON			MS-1529	B
	MODEL	ASS'Y. NO.	DATE		
2	GPT-10K	AT-100	1-31-59		



A - 13/64 (.203) DIA. 4 REQ'D.



REQ.	ITEM	PART NO.	DESCRIPTION				SYMBOL
		.081	THE TECHNICAL MATERIEL CORP.				
		STOCK SIZE	MAMARONECK, NEW YORK				
B	1	"A" HOLES (13/64) WERE 9/64 A HOLES RELOCATED	11/11/60	1740	11/9	Jde	ARB
A	1	STOCK SIZE WAS .064	12/22/59	1693	AKB	Jde	ARB
ISSUE	ITEM	CHANGED FROM	DATE	CH. NO.	DRAFTS	CHECKER	ENG. APP.
TOLERANCES			SCALE:				
DEC. DIM. ±			MAXIMUM ALLOWABLE TOLERANCES HAVE BEEN DETERMINED AND ANY DEVIATIONS WILL BE CAUSE FOR REJECTION.				
FRAC. DIM. ± 1/64			REMOVE ALL BURRS AND SHARP EDGES				
ANGULAR DIM. ±							
		5052-H-32			J.C. BIELE	Jde	ARB
		TYPE & TEMPER	HEAT TREAT. SPEC.		DRAWN	CHECKED	FINAL APPROVAL
		IRIDITE				ARB	MS-1529 B
		FINISH & SPEC. NO.			ELEC. DES. APP	MECH. DES. APP	