

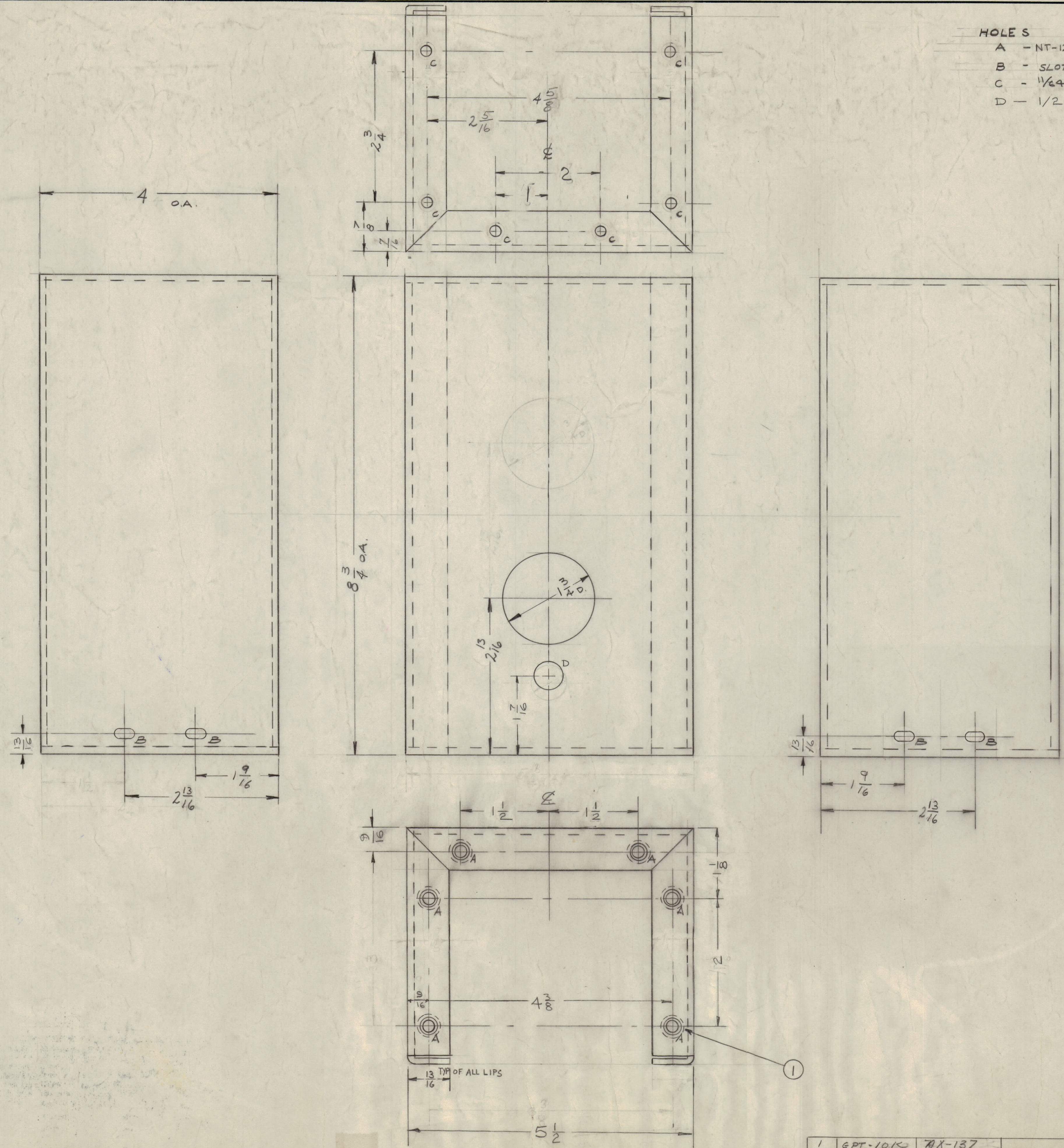
IF IT IS FOUND DESIRABLE TO CHANGE ANY TOLERANCE OR OTHER DETAIL SPECIFIED ON THIS DRAWING NOTIFY THE PURCHASER PROMPTLY.
 MAXIMUM ALLOWABLE TOLERANCES HAVE BEEN DETERMINED AND DEVIATIONS WILL BE CAUSE FOR REJECTION. REMOVE ALL BURRS AND SHARP EDGES

NOTICE TO PERSONS RECEIVING THIS DRAWING

THE TECHNICAL MATERIEL CORPORATION claims proprietary right in the material disclosed herein. This drawing is issued in confidence for engineering information only and may not be reproduced or used to manufacture anything shown hereon without permission from THE TECHNICAL MATERIEL CORPORATION to the user. This drawing is loaned for mutual assistance and is subject to recall at any time.

Property of:
 THE TECHNICAL MATERIEL CORPORATION
 MAMARONECK, NEW YORK

HOLE	REQ'D
A - NT-129-832-4 (.221 to .224) D	6
B - SLOTTED 1/64 x 1/32	4
C - 1/64 (.0151) DIA.	6
D - 1/2 DIA.	1



ISSUE	ITEM	CHANGED FROM	DATE	CN. NO.	DRAFTS	CHECKER	ENG. APP.
C	1	ALL LIPS WERE 3/4"	10-13-60	3193	[Signature]	[Signature]	[Signature]
B	1	"D" HOLE RELOCATED	7-22-60	2020	[Signature]	[Signature]	[Signature]
A	1	3/4 WAS 3/8 (LIPS) NT-129-832-4 WAS EM-107-26	12-3-59	1610	[Signature]	[Signature]	[Signature]

ALL OTHERS	DEC. DIM. ±	FRAC. DIM. ±	ANGULAR DIM. ±	SCALE:	DRILL, PUNCH, COMMERCIAL STOCK SIZES AND MANUFACTURERS TOLERANCES ARE NOT INCLUDED.

REQ. PER UNIT	MODEL	PROJECT NO.	ASSY. NO.	DATE
1	GPT-19K	AX-137		1-23-59

REQ. ITEM	PART NO.	DESCRIPTION	SYMBOL
6	1	NT-129-832-4 NUT, ROUND, SWAGE TYPE	
1/8 THICK		THE TECHNICAL MATERIEL CORP. MAMARONECK, NEW YORK	
ALUMINUM		CHASSIS, OUTPUT CONDENSER	
5052 - H 32		DRAWN: [Signature] ELEC. DES. APP. [Signature] MECH. DES. APP. [Signature]	
HEAT TREAT. SPEC. S-404 IRIDITE		CHECKED: [Signature] FINAL APPROVAL: [Signature]	
FINISH & SPEC. NO.		MS-1503 C	

MS-1503 C