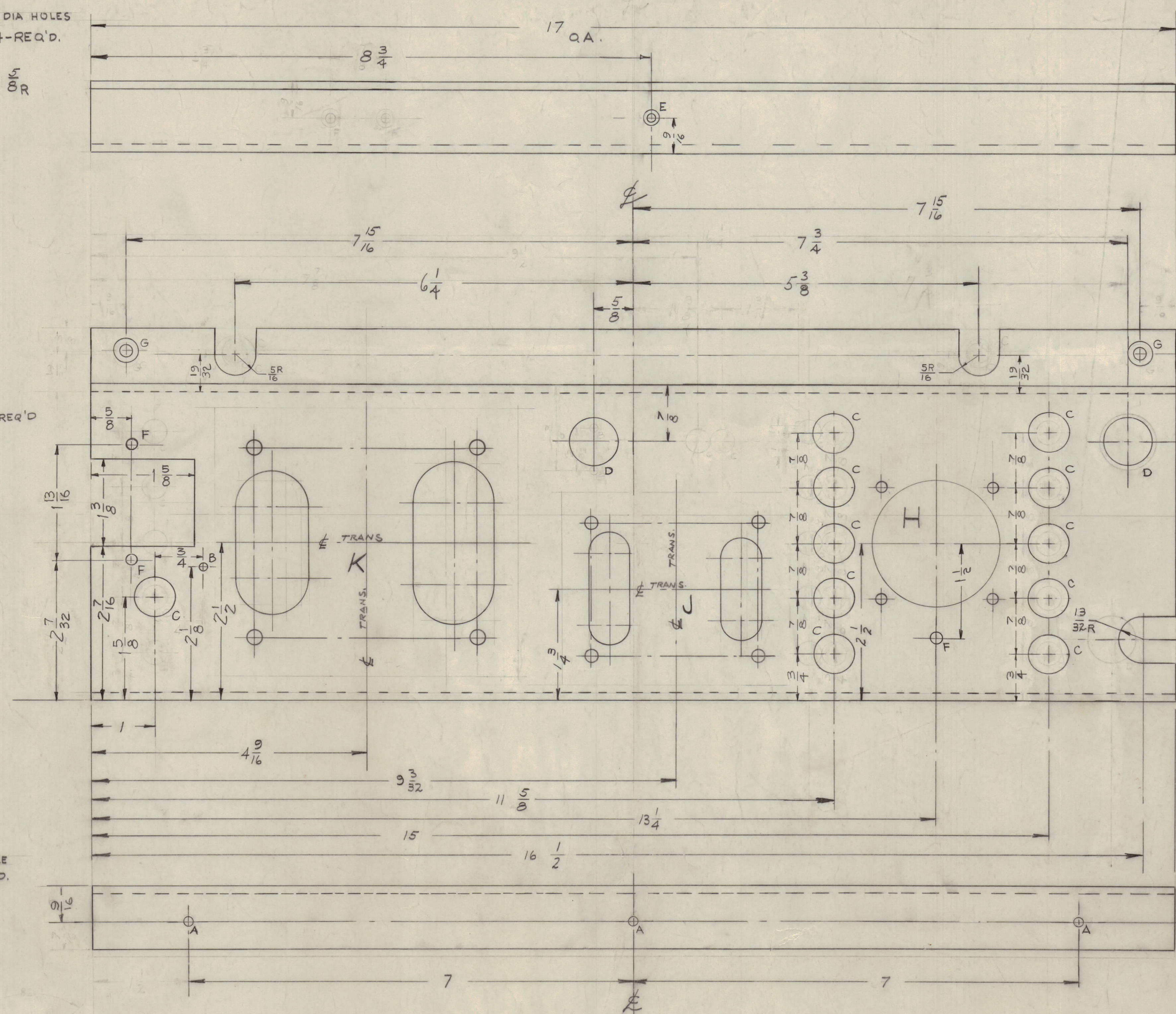
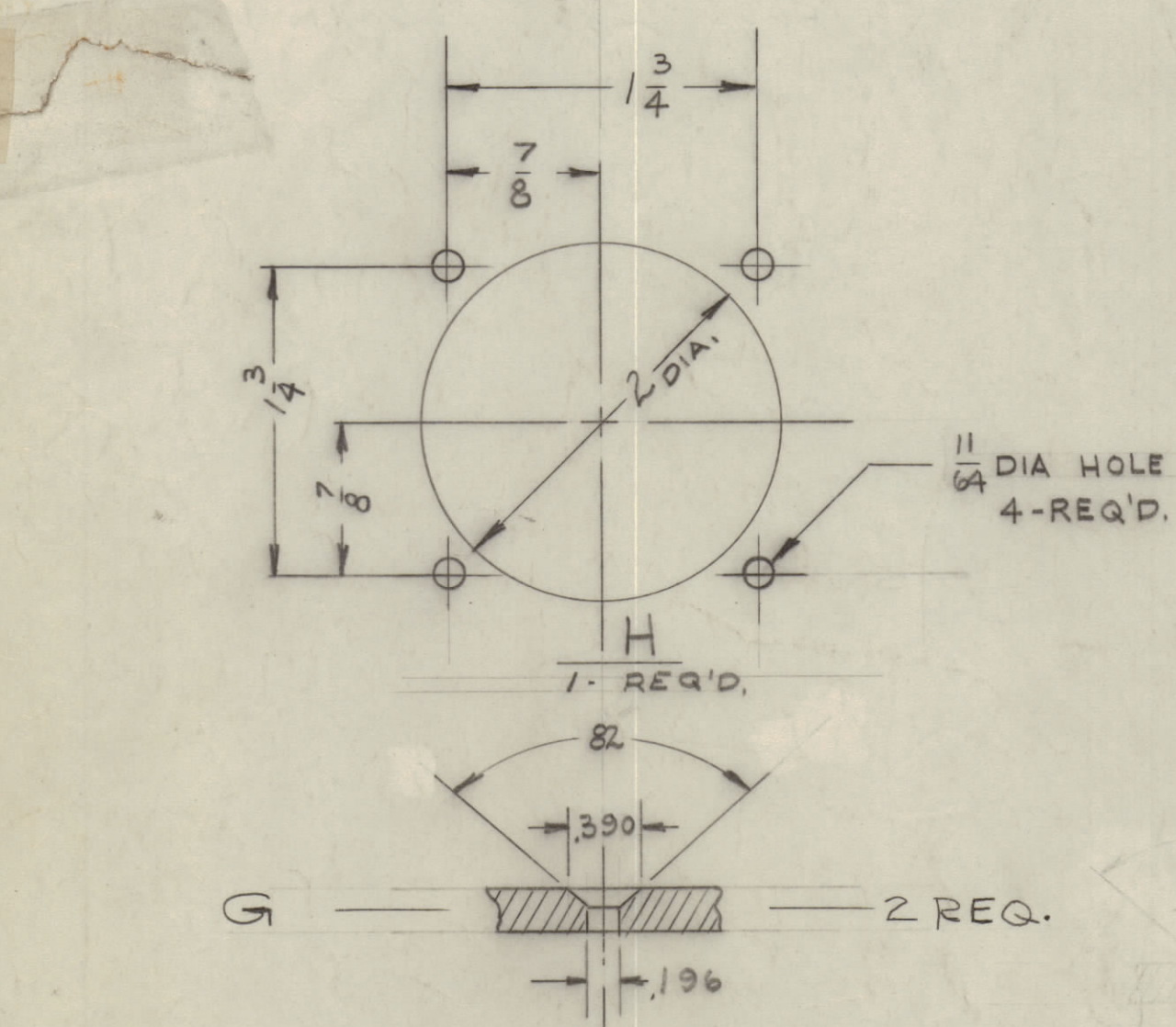
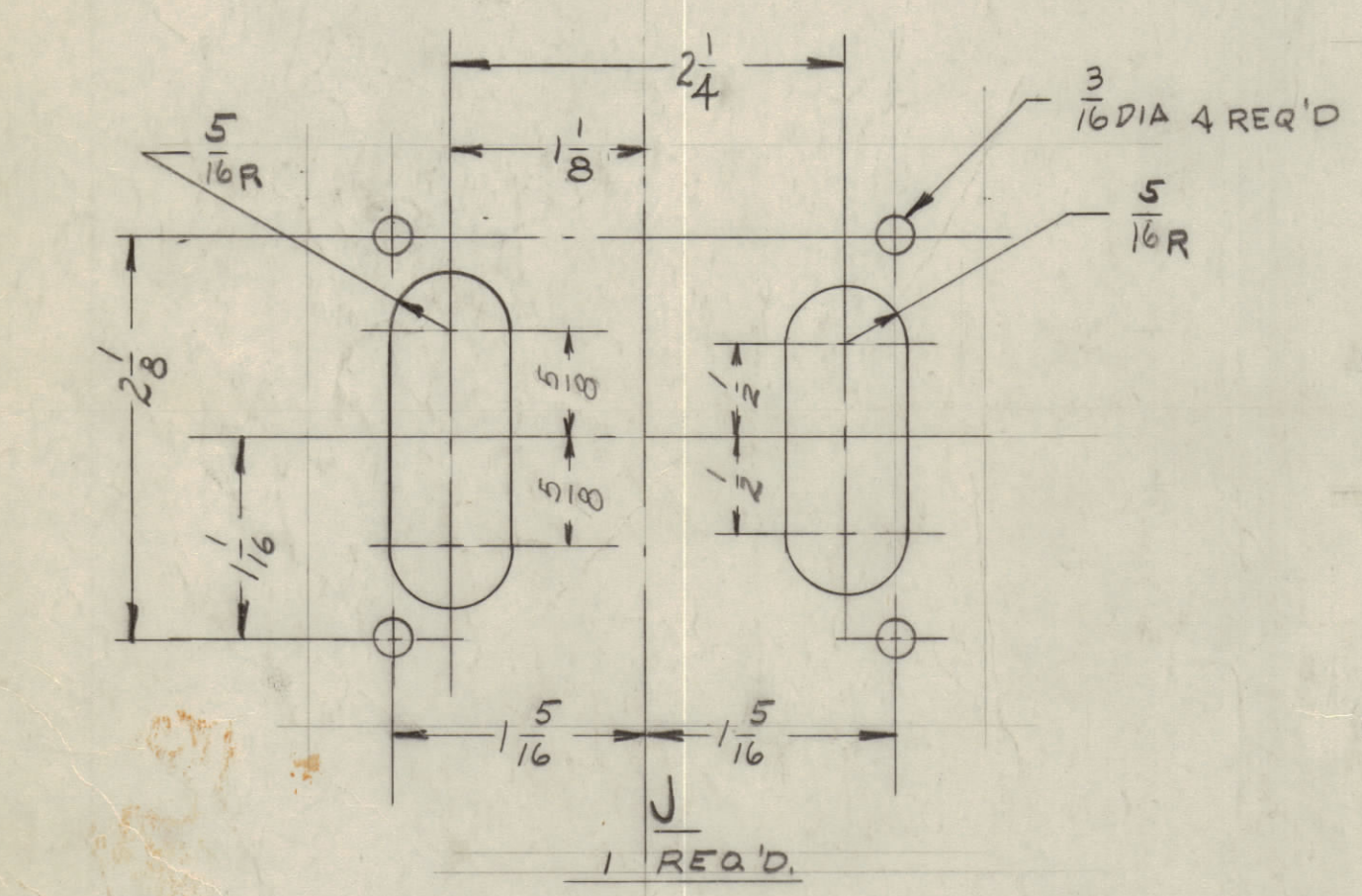
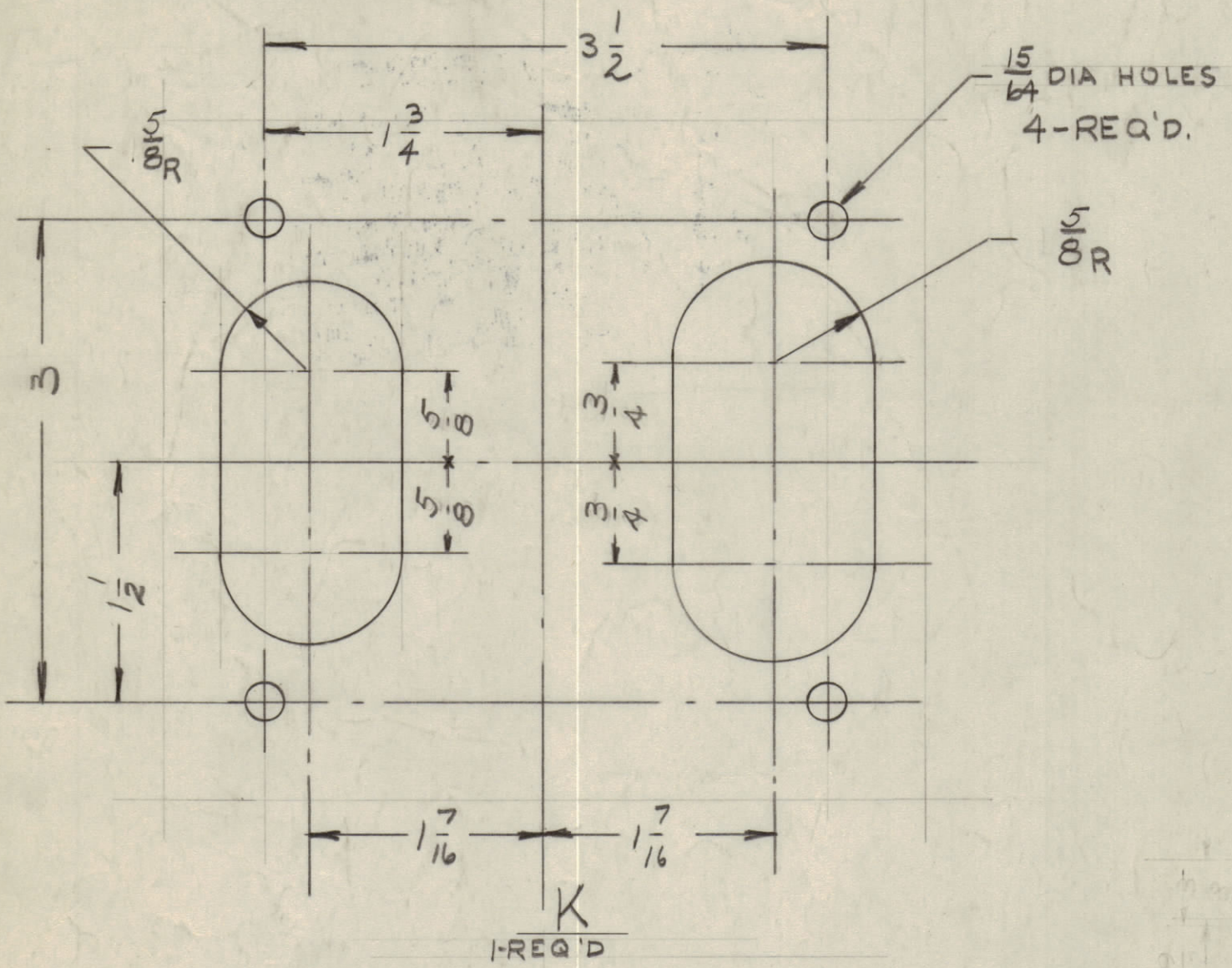


IF IT IS FOUND DESIRABLE TO CHANGE ANY TOLERANCE OR OTHER DETAIL SPECIFIED ON THIS DRAWING NOTIFY THE PURCHASER PROMPTLY.  
 MAXIMUM ALLOWABLE TOLERANCES HAVE BEEN DETERMINED AND DEVIATIONS WILL BE CAUSE FOR REJECTION.  
 REMOVE ALL BURRS AND SHARP EDGES

HOLES	REQ'D.
A - 13/64 DIA	3
B - 1/8 (.125) DIA.	1
C - 5/8 DIA.	11
D - 3/4 (.7500) DIA.	2
E - DRILL & C/SINK G-32	1
F - 11/64 (.171) DIA.	3



**NOTICE TO PERSONS RECEIVING THIS DRAWING**

THE TECHNICAL MATERIEL CORPORATION claims proprietary right in the material disclosed herein. This drawing is issued in confidence for engineering information only and may not be reproduced or used to manufacture anything shown herein without permission from THE TECHNICAL MATERIEL CORPORATION to the user. This drawing is loaned for mutual assistance and is subject to recall at any time.

Property of:  
 THE TECHNICAL MATERIEL CORPORATION  
 MAMARONECK, NEW YORK

F	1	1/4" HOLE ADDED	11/64	11799		
E	1	5/16" NOTCHES WERE 4 HOLES	10/31	5651		
D	2	C HOLES WERE 3/4"	22	30		
C	1	1 1/2" DIM. WAS RELOCATED	11/23/51	1586		
B	5	Slot Added	5/27	1066		
B	4	1/8" Hole Relocated				
B	3	1/8" Hole Deleted				
B	2	1/8" Holes Deleted				
B	1	1/8" Holes Added				
A	1	1 1/2" DRILL WAS 5/8" WAS 3/4"	11/13			

ISSUE	ITEM	CHANGED FROM	DATE	CH. NO	DRAFTS	CHECKER	ENG. APP.
TOLERANCES		SCALE:					
ALL	OTHERS	DEC. DIM. ±	FRAC. DIM. ±	ANGULAR DIM. ±	DRILL, PUNCH, COMMERCIAL STOCK SIZES AND MANUFACTURERS TOLERANCES ARE NOT INCLUDED.		

REF: 8LD-535

REQ. ITEM	PART NO.	DESCRIPTION	SYMBOL
1/8 THICK			
STOCK SIZE			
ALUMINUM			
MATERIAL WEIGHT PER PC.			
5052-H32			
TYPE & TEMPER			
HEAT TREAT. SPEC.			
172 DITE			
FINISH & SPEC. NO.			

1	GM. - 10K	AX-104		11-19-58
REQ PER UNIT	MODEL	PROJECT NO.	ASSY. NO.	DATE
USED ON				

MS-1487

MS-1487