

IF IT IS FOUND DESIRABLE TO CHANGE ANY TOLERANCE OR OTHER DETAIL SPECIFIED ON THIS DRAWING NOTIFY THE PURCHASER PROMPTLY.

MAXIMUM ALLOWABLE TOLERANCES HAVE BEEN DETERMINED AND DEVIATIONS WILL BE CAUSE FOR REJECTION. REMOVE ALL BURRS AND SHARP EDGES

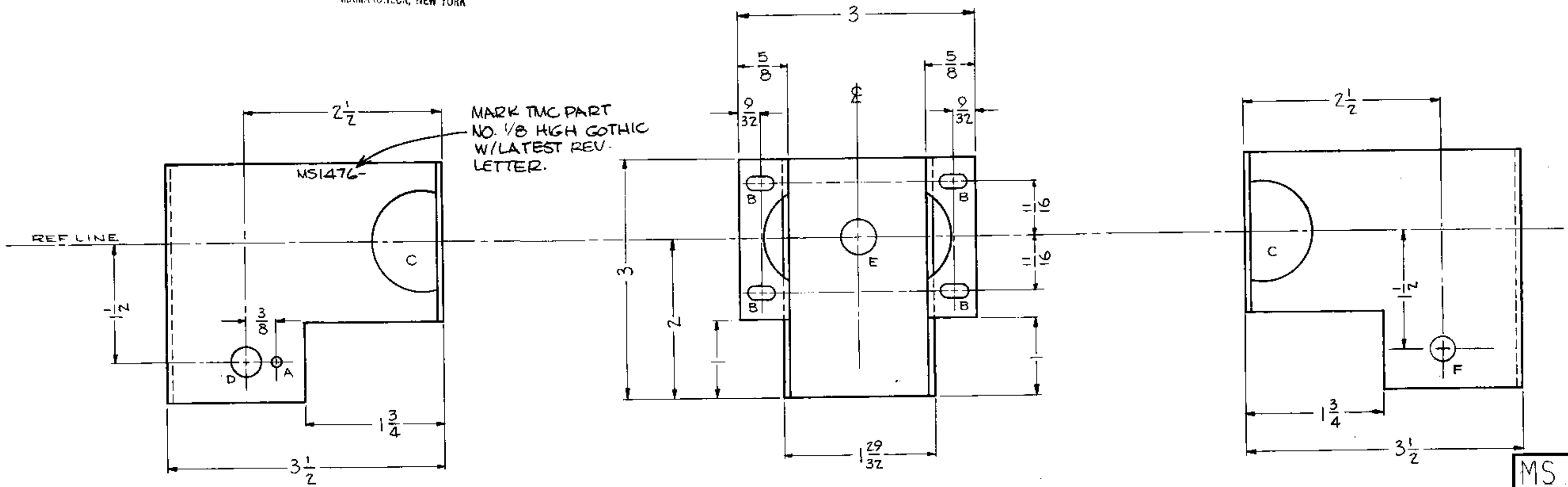
NOTICE TO PERSONS RECEIVING THIS DRAWING

THE TECHNICAL MATERIEL CORPORATION claims proprietary right in the material disclosed hereon. This drawing is issued in confidence for engineering information only and may not be reproduced or used to manufacture anything shown hereon without permission from THE TECHNICAL MATERIEL CORPORATION to the user. This drawing is loaned for mutual assistance and is subject to recall at any time.

Property of:
THE TECHNICAL MATERIEL CORPORATION
MAMARONECK, NEW YORK

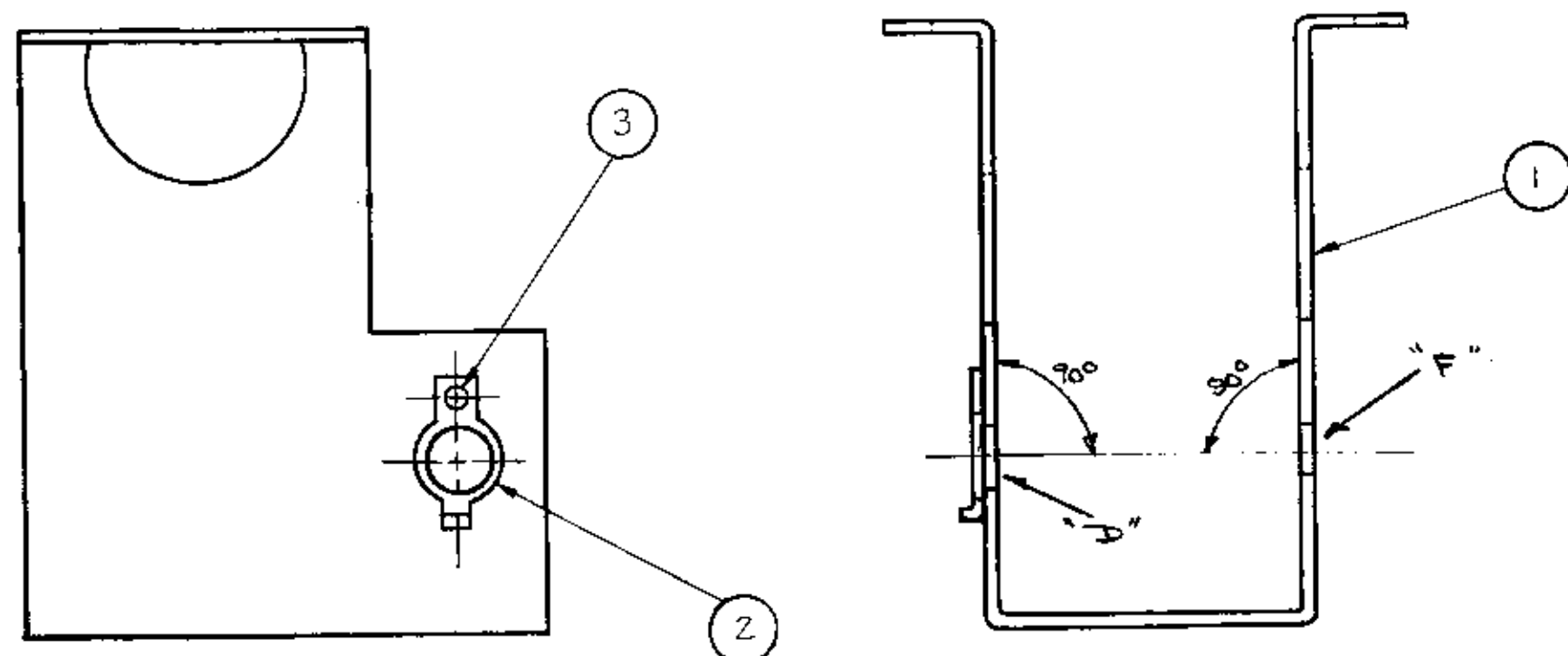
HOLE LEGEND

A - 1/8 (.125) DIA.	1 REQ'D.
B - 11/64 X 11/32 SLOTS	4 REQ'D.
C - 1-1/4 (1.250) DIA.	2 REQ'D.
D - 3/8 (.375) DIA.	1 REQ'D.
E - 7/16 (.437) DIA.	1 REQ'D.
F - 5/16 (.312) DRILL & REAM FOR TIGHT FIT (CLASS G) OF PANEL BEARING (BB-117-G) AFTER CAUSTIC DIP	1 REQ'D.



MS 1476 B

DATE	BY	REVISION
12-3-59	JWA	1
1-20-59	JWA	2



1	3	EY-101-2	RIVET, EYELET	
1	2	PM-516	WASHER, LOCK	
1	1		HOUSING	
REQ. ITEM	PART NO.	DESCRIPTION		SYMBOL
.081				
STOCK SIZE				
ALUMINUM		THE TECHNICAL MATERIEL CORP.		
		MAMARONECK, NEW YORK		
5052-H32		HOUSING, RIGHT ANGLE DRIVE		
MATERIAL		WEIGHT PER PC.		
TYPE & TEMPER		JOHN C. BLEUE		
HEAT TREAT. SPEC.		DRAWN		
5404-1/2RIPITE		ELEC. DES. APP.		
FINISH & SPEC. NO.		CHECKED		
		FINAL APPROVAL		
		MS 1476 B		

B	ADD QTY'S 1, 2, 3	11/164	1/252	RME	JWA		
A	3004 - IRIDITE WAS	12-3	59	1001	P		
	5101 - CAUSTIC DIP				EMN		
ISSUE	ITEM	CHANGED FROM	DATE	CN. NO.	DRAFTS	CHECKER	ENG. APP.
TOLERANCES							
SCALE: 1" = 1"							
DEC. DIM. ±				DRILL PUNCH COMMERCIAL STOCK			
FRAC. DIM. ± 1/64				SIZES AND MANUFACTURERS			
ANGULAR DIM. ±				TOLERANCES ARE NOT INCLUDED.			

1	RTF-2	POW/AMP	A-1602	1-20-59
REQ PER UNIT	MODEL	PROJECT NO.	ASSY. NO.	DATE
USED ON				