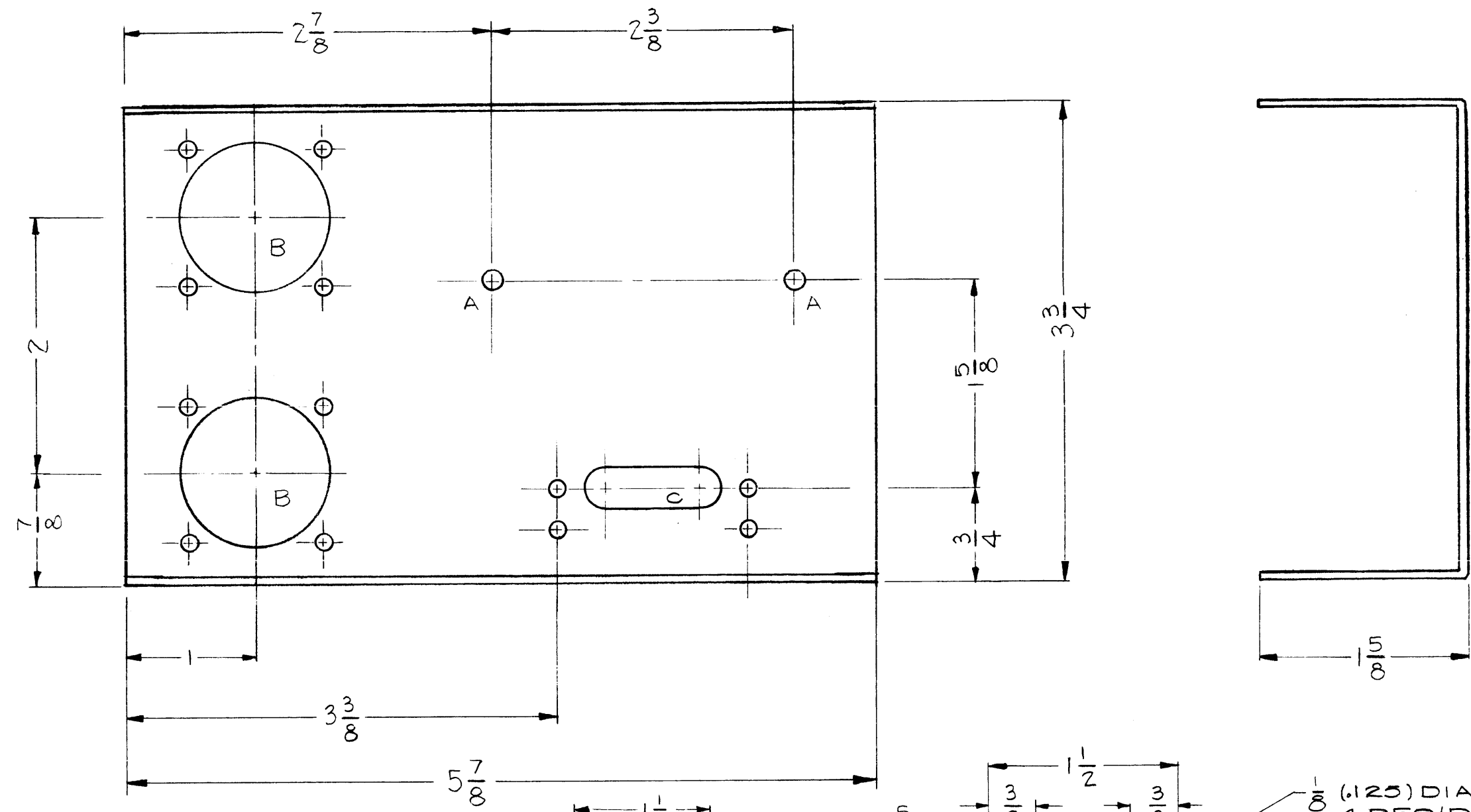


MS-1474

A - 5/32 (.156) DIA.

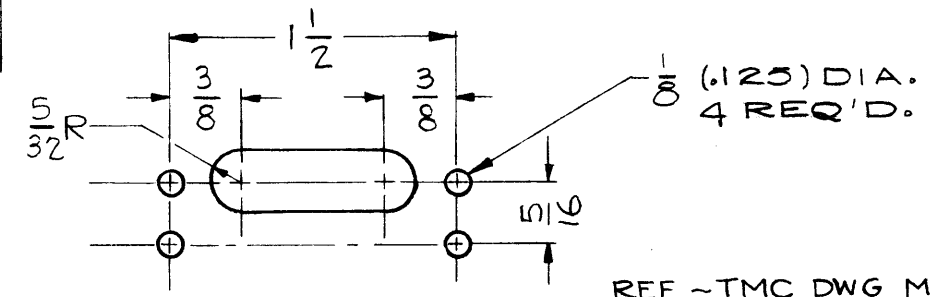
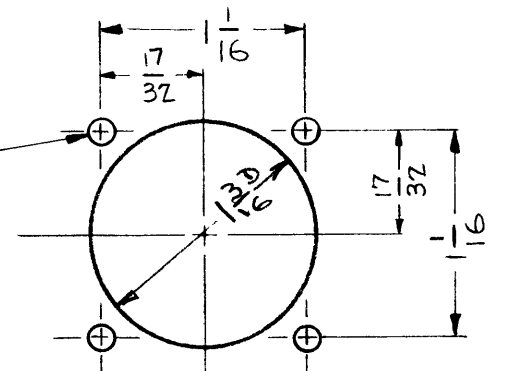
2 REQ'D.



**NOTICE TO PERSONS RECEIVING THIS DRAWING**  
 THE TECHNICAL MATERIEL CORPORATION claims proprietary right in the material disclosed hereon. This drawing is issued in confidence for engineering information only and may not be reproduced or used to manufacture anything shown hereon without permission from THE TECHNICAL MATERIEL CORPORATION to the user. This drawing is loaned for mutual assistance and is subject to recall at any time.

Property of:  
 THE TECHNICAL MATERIEL CORPORATION  
 MAMARONECK, NEW YORK

1/8 (.125) DIA.  
 4 REQ'D.



REF - TMC DWG MS-1360 SHEET 5 (REAR VIEW)

ISSUE	ITEM	CHAN	ED	FR	M	DATE	CH. NO.	DRAFTS	CHECKER	ENG. APP.
TOLERANCES						SCALE:				
DEC. DIM. ±						MAXIMUM ALLOWABLE TOLERANCES HAVE BEEN DETERMINED AND ANY DEVIATIONS WILL BE CAUSE FOR REJECTION: REMOVE ALL BURRS AND SHARP EDGES				
FRAC. DIM. ± 1/64										
ANGULAR DIM. ±										

1	CAB-7			1-12-59
REQ. PER UNIT	MODEL	PROJECT NO.	ASSY. NO.	DATE
USED ON				

REQ. ITEM	PART NO.	DESCRIPTION		SYMBOL
.062		THE TECHNICAL MATERIEL CORP.		
STEEL		MAMARONECK, NEW YORK		
		MOUNTING PLATE, CONNECTOR		
		J.C. BIELE	<i>[Signature]</i>	<i>[Signature]</i>
		DRAWN	CHECKED	FINAL APPROVAL
				MS-1474
		ELEC. DES. APP.	MECH. DES. APP.	