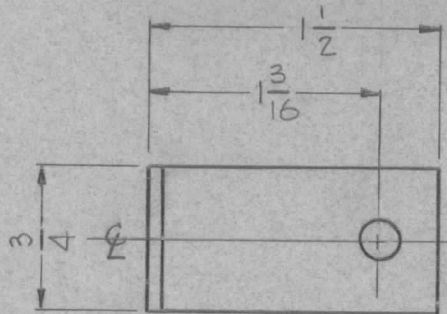
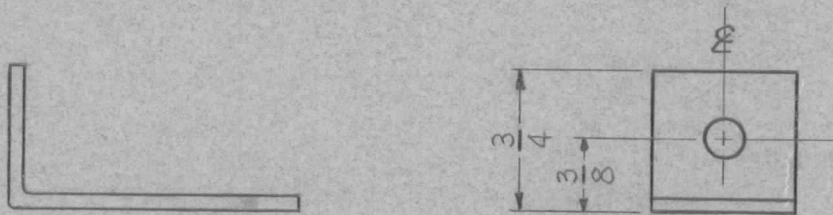


REQ. PER UNIT	USED ON			MS-1470 A
	MODEL	ASS'Y. NO.	DATE	
1	GPT 10,000	I.P.A.	1-2-59	



A ~ 13/64 (.203) DIA 2 REQ.



UNLESS OTHERWISE SPECIFIED DIMENSIONS ARE IN INCHES AND INCLUDE CHEMICALLY APPLIED OR PLATED FINISHES		
DECIMALS	TOLERANCES	FRACTIONS
.X ± .05		± 1/64
.XX ± .01		ANGLES
.XXX ± .005		± 0° 30'

CUT HERE
GUARANTEED
2-66

REQ.	ITEM	PART NO.	DESCRIPTION				SYMBOL
		.081	THE TECHNICAL MATERIEL CORP.				
		STOCK SIZE	MAMARONECK, NEW YORK				
A	1	ALUMINUM	BRACKET, MTG. R.F. CHOKE				
		MATERIAL					
		5052-H32	J.C. BIELE				
		TYPE & TEMPER	DRAWN	CHECKED	FINAL APPROVAL		
		S-404-IRIDITE YEL			MS-1470 A		
		FINISH & SPEC. NO.	ELEC. DES. APP	MECH. DES. APP			

ISSUE	ITEM	CHANGED FROM	DATE	CH. NO.	DRAFTS	CHECKER	ENG. APP.
		S404-IRIDITE WAS S101 CAUSTIC DIP	12/8/59	1001	1		EMN

TOLERANCES	SCALE:
DEC. DIM. ±	MAXIMUM ALLOWABLE TOLERANCES HAVE BEEN DETERMINED AND ANY DEVIATIONS WILL BE CAUSE FOR REJECTION.
FRAC. DIM. ±	REMOVE ALL BURRS AND SHARP EDGES
ANGULAR DIM. ±	