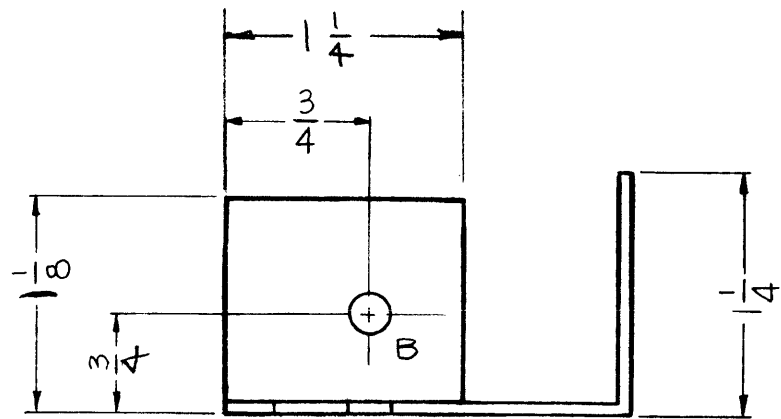
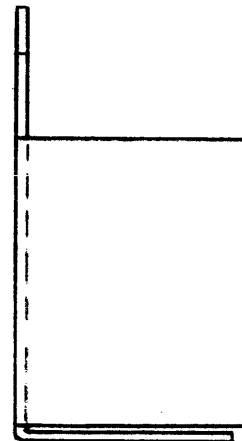
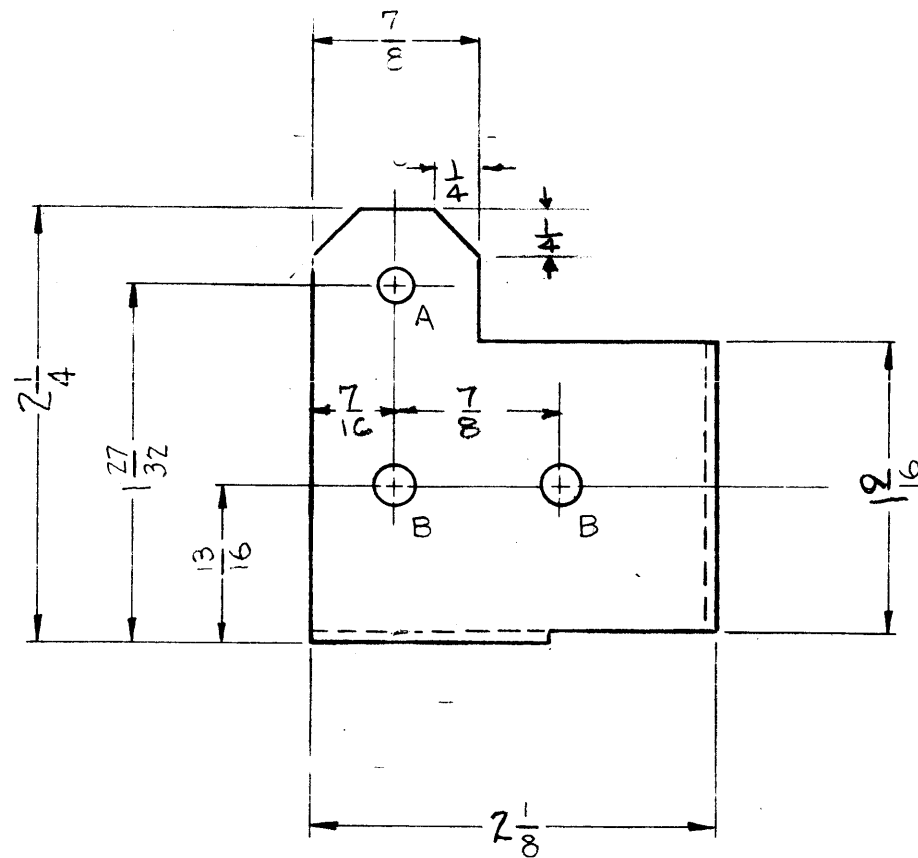


MS-1454 A



A ~ 11/64 (.171) DIA.
 B ~ 13/64 (.203) DIA.

1 REQ.
 3 REQ.



NOTICE TO PERSONS RECEIVING THIS DRAWING
 THE TECHNICAL MATERIEL CORPORATION claims proprietary right in the material disclosed hereon. This drawing is issued in confidence for engineering information only and may not be reproduced or used to manufacture anything shown hereon without permission from THE TECHNICAL MATERIEL CORPORATION to the user. This drawing is loaned for mutual assistance and is subject to recall at any time.

Property of:
 THE TECHNICAL MATERIEL CORPORATION
 MAMARONECK, NEW YORK

A	1	S-404 WAS S-101	12/15/59	1001	AB		EMN
ISSUE	ITEM	CHANGED FR M	DATE	CH. NO.	DRAFTS	CHECKER	ENG. APP.
TOLERANCES			SCALE: <i>H</i>				
DEC. DIM. ±			MAXIMUM ALLOWABLE TOLERANCES HAVE BEEN DETERMINED AND ANY DEVIATIONS WILL BE CAUSE FOR REJECTION: REMOVE ALL BURRS AND SHARP EDGES				
FRAC. DIM. ± <i>√64</i>							
ANGULAR DIM. ±							

1	GPT-10,000	IPA		12-23-58
REQ. PER UNIT	MODEL	PROJECT NO.	ASSY. NO.	DATE
USED ON				

REQ.	ITEM	PART NO.	DESCRIPTION		SYMBOL
		.064	THE TECHNICAL MATERIEL CORP.		
		STOCK SIZE	MAMARONECK, NEW YORK		
		ALUMINUM	BRACKET, NEUTRALZER		
		MATERIAL			
		5052-H-32	J.C. BIELE	<i>JCB</i>	<i>AMB</i>
		TYPE & TEMPER	DRAWN	CHECKED	FINAL APPROVAL
		S-404 YELLOW IRIDITE	<i>JCB</i>	<i>JCB</i>	MS-1454 A
		FINISH & PEC. NO.	ELEC. DES. APP.	MECH. DES. APP.	